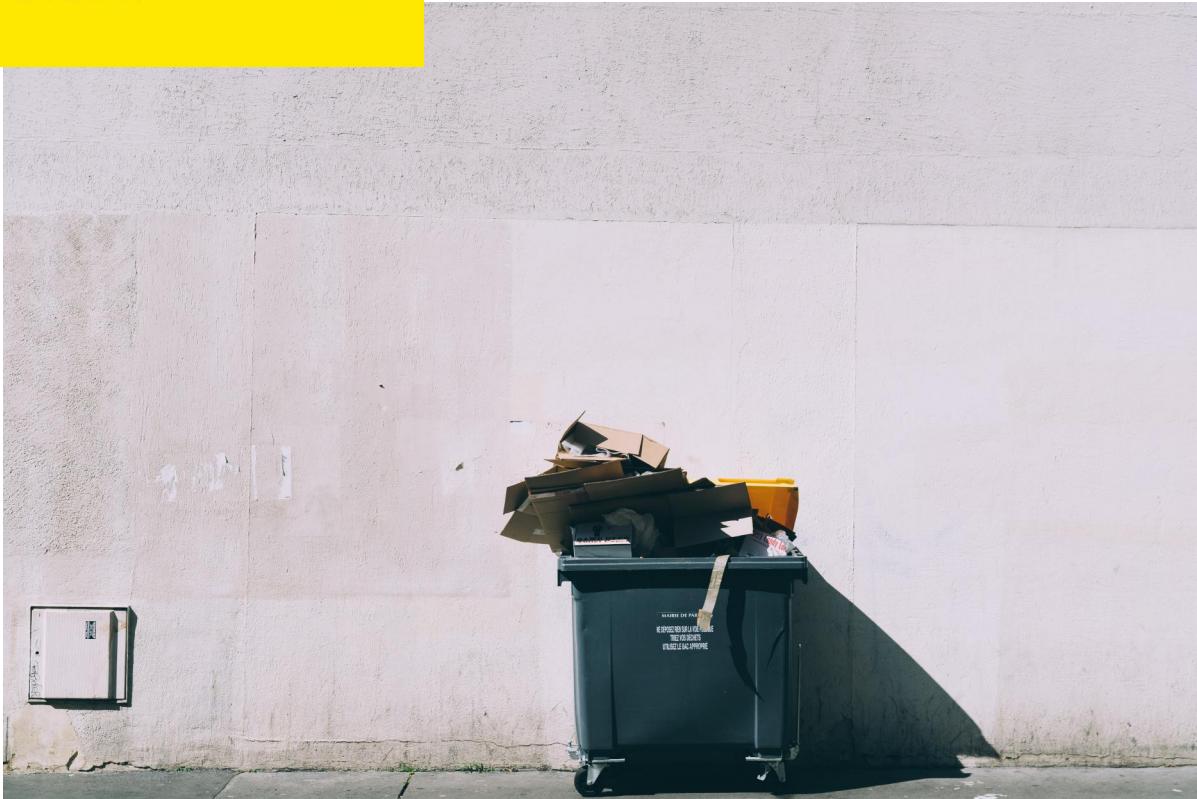




Australia's  
Global  
University



# ARTS2243

Waste and Society

Term Three // 2020

## Course Overview

### Staff Contact Details

#### Convenors

Name	Email	Availability	Location	Phone
Matthew Kearnes	m.kearnes@unsw.edu.au	By appointment	MB365	Please email queries.

### School Contact Information

School of Humanities and Languages

Location: School Office, Morven Brown Building, Level 2, 258

Opening Hours: Monday - Friday, 9am - 5pm

Phone: +61 2 9385 1681

Fax: +61 2 9385 8705

Email: [hal@unsw.edu.au](mailto:hal@unsw.edu.au)

## **Course Details**

**Credit Points 6**

### **Summary of the Course**

This course introduces you to the historical, social and cultural implications of the wastes generated by human society. Dimensions and topics you study include: life cycles of materials, how we make knowledge about waste, the social implications of waste management technologies, 'legacy' issues and the 'colonisation of the future' by wastes. Our waste stream examples include plastics, water and sewage, nuclear materials, industrial sea dumping, international trade in toxic wastes, domestic landfill, and the creation of 'wastelands' and contaminated sites. You explore solutions to the generation of wastes by studying the precautionary principle, environmental justice, international waste conventions and treaties, and regulatory and community responses to waste. Creative 'visioning exercises' assist you to explore alternative futures for waste and society.

### **Course Learning Outcomes**

1. Explain the historical, social and cultural contexts for the production of wastes.
2. Analyse the relationship between technology and society that allows waste streams to be generated.
3. Apply selected disciplinary approaches to the understanding of waste and society; and make a trans-disciplinary synthesis; 'a way of looking' at wastes.
4. Apply skills of critical analysis, problem solving and interpretation, inflected through imaginative, creative and visioning approaches.
5. Conduct independent research, individually and in groups, with demonstrated ability to assemble, synthesize and communicate findings and interpretations

### **Teaching Strategies**

The teaching format of the course includes lectures and tutorials. Each week in the lectures, you learn about the discursive, material and political dimensions of our relationship with waste. In the weekly tutorials, you will draw upon the course readings and methodologies of 'future studies' to engage with and attempt to solve waste-related dilemmas through a range of individual and group-based activities. You will also be required to undertake independent research.

# Assessment

## Assessment Tasks

Assessment task	Weight	Due Date	Student Learning Outcomes Assessed
Essay	35%	16/10/2020 11:00 PM	1,2,3,5
Waste Futures - Group Presentation	20%	Not Applicable	1,3,4
Waste Futures - Final Report	45%	27/11/2020 11:00 PM	1,2,3,4,5

## Assessment Details

### Assessment 1: Essay

**Start date:** Not Applicable

**Length:** 1500 words

**Details:**

Design your essay topic to allow you to apply the readings to contemporary issues of waste.

Individual feedback will be provided by the lecturer/tutor.

**Turnitin setting:** This assignment is submitted through Turnitin and students can see Turnitin similarity reports.

### Assessment 2: Waste Futures - Group Presentation

**Start date:** Not Applicable

**Length:** 15 minutes

**Details:**

This group assessment requires you to report back on your group research project on a particular waste stream and its possible futures.

The lecturer/tutor will provide oral feedback in class as well as prompt and detailed written feedback.

You will also provide peer feedback on another group's presentation.

All of this feedback will have the additional function of helping you to improve your Final Reports.

**Submission notes:** Week 9 and 10

### **Assessment 3: Waste Futures - Final Report**

**Start date:** Not Applicable

**Length:** 2000 words

**Details:**

This assessment requires you to prepare a written report on your group research project on a particular waste stream and its possible futures.

The lecturer/tutor will provide written feedback on this final report.

## Attendance Requirements

Students are strongly encouraged to attend all classes and review lecture recordings.

## Course Schedule

[View class timetable](#)

### Timetable

Date	Type	Content
Week 1: 14 September - 18 September	Seminar	<b>What is waste?</b>  Course overview: Introduction to waste. Mattering.  Readings available via course leganto site.
	Online Activity	Online activities available via the course moodle site.
Week 2: 21 September - 25 September	Seminar	<b>The Roaring 1920s: Inventing the Consumer, Reinventing Waste (Prof. Nicolas Rasmussen)</b>  Readings available via course leganto site.
	Online Activity	Online activities available via the course moodle site.
Week 3: 28 September - 2 October	Seminar	<b>Waste(ed) theory</b>  Readings available via course leganto site.
	Online Activity	Online activities available via the course moodle site.
Week 4: 5 October - 9 October	Homework	<b>PUBLIC HOLIDAY</b>
	Screening	Asynchronous seminar - <b>geographies of urban decay</b>
	Online Activity	Online activities available via the course moodle site.
Week 5: 12 October - 16 October	Seminar	<b>Everyday waste practices</b>
	Online Activity	Online activities available via the course moodle site.
Week 6: 19 October - 23 October		<b>No Classes - Flexibility Week</b>

Week 7: 26 October - 30 October	Seminar	<b>Pollution and Purity</b> Readings available via course leganto site.
	Online Activity	Online activities available via the course moodle site
Week 8: 2 November - 6 November	Seminar	<b>E-waste and orbital debris (space junk)</b> Readings available via course leganto site.
	Online Activity	Case study three: Waste futures
Week 9: 9 November - 13 November	Seminar	<b>Buried Waste</b> Readings available via course leganto site.
	Presentation	Group presentations
	Online Activity	Online activities available via the course moodle site.
Week 10: 16 November - 20 November	Seminar	<b>Decay, Ruination and wasting the anthropocene.</b> Readings available via course leganto site.
	Presentation	Group Presentations
	Online Activity	Online activities available via the course moodle site.

## **Resources**

### **Prescribed Resources**

N/A

### **Recommended Resources**

Douglas, M. (1966). Purity and Danger. London: Routledge.

Hawkins, G. (2006). The ethics of waste: How we relate to rubbish. Lanham, MD: Rowman & Littlefield.

#### **Websites:**

The United Nations Environment Program sites on three conventions relevant to wastes:

the Basel Convention,

the Stockholm Convention and

the Rotterdam Convention;

<http://www.environment.gov.au/wastepolicy/publications/national-waste-report.html>

<http://www.environment.gov.au/protection/hazardous-waste/conventions>

### **Course Evaluation and Development**

Formal student evaluations will be conducted via myExperience. You are also welcome to informally offer feedback on what is working well and what would enhance your learning at any stage of the course through an open Moodle forum for discussion, suggestions and comments.



## **Submission of Assessment Tasks**

### **Turnitin Submission**

If you encounter a problem when attempting to submit your assignment through Turnitin, please telephone External Support on 9385 3331 or email them on [externalteltsupport@unsw.edu.au](mailto:externalteltsupport@unsw.edu.au) . Support hours are 8:00am – 10:00pm on weekdays and 9:00am – 5:00pm on weekends (365 days a year). If you are unable to submit your assignment due to a fault with Turnitin you may apply for an extension, but you must retain your ticket number from External Support (along with any other relevant documents) to include as evidence to support your extension application. If you email External Support you will automatically receive a ticket number, but if you telephone you will need to specifically ask for one. Turnitin also provides updates on their system status on Twitter.

Generally, assessment tasks must be submitted electronically via either Turnitin or a Moodle assignment. In instances where this is not possible, it will be stated on your course's Moodle site with alternative submission details.

For information on how to submit assignments online via Moodle: <https://student.unsw.edu.au/how-submit-assignment-moodle>

## Academic Honesty and Plagiarism

Plagiarism is using the words or ideas of others and presenting them as your own. It can take many forms, from deliberate cheating to accidentally copying from a source without acknowledgement.

UNSW groups plagiarism into the following categories:

**Copying:** using the same or very similar words to the original text or idea without acknowledging the source or using quotation marks. This also applies to images, art and design projects, as well as presentations where someone presents another's ideas or words without credit.

**Inappropriate paraphrasing:** Changing a few words and phrases while mostly retaining the original structure and/or progression of ideas of the original, and information without acknowledgement. This also applies in presentations where someone paraphrases another's ideas or words without credit and to piecing together quotes and paraphrases into a new whole, without appropriate referencing.

**Collusion:** working with others but passing off the work as a person's individual work. Collusion also includes providing your work to another student before the due date, or for the purpose of them plagiarising at any time, paying another person to perform an academic task, stealing or acquiring another person's academic work and copying it, offering to complete another person's work or seeking payment for completing academic work.

**Inappropriate citation:** Citing sources which have not been read, without acknowledging the "secondary" source from which knowledge of them has been obtained.

**Duplication ("self-plagiarism"):** submitting your own work, in whole or in part, where it has previously been prepared or submitted for another assessment or course at UNSW or another university.

Correct referencing practices:

- Paraphrasing, summarising, essay writing and time management
- Appropriate use of and attribution for a range of materials including text, images, formulae and concepts.

Individual assistance is available on request from The Learning Centre (<http://www.lc.unsw.edu.au/>). Students are also reminded that careful time management is an important part of study and one of the identified causes of plagiarism is poor time management. Students should allow sufficient time for research, drafting and proper referencing of sources in preparing all assessment items.

UNSW Library also has the ELISE tool available to assist you with your study at UNSW. ELISE is designed to introduce new students to studying at UNSW but it can also be a great refresher during your study.

Completing the ELISE tutorial and quiz will enable you to:

- analyse topics, plan responses and organise research for academic writing and other assessment tasks
- effectively and efficiently find appropriate information sources and evaluate relevance to your needs
- use and manage information effectively to accomplish a specific purpose
- better manage your time

- understand your rights and responsibilities as a student at UNSW
- be aware of plagiarism, copyright, UNSW Student Code of Conduct and Acceptable Use of UNSW ICT Resources Policy
- be aware of the standards of behaviour expected of everyone in the UNSW community
- locate services and information about UNSW and UNSW Library

Some of these areas will be familiar to you, others will be new. Gaining a solid understanding of all the related aspects of ELISE will help you make the most of your studies at UNSW.

<http://subjectguides.library.unsw.edu.au/elise/aboutelise>

## Academic Information

For essential student information relating to:

- requests for extension;
- late submissions guidelines;
- review of marks;
- UNSW Health and Safety policies;
- examination procedures;
- special consideration in the event of illness or misadventure;
- student equity and disability;
- and other essential academic information, see

<https://www.arts.unsw.edu.au/current-students/academic-information/protocols-guidelines/>

## Image Credit

Photo by [Jilbert Ebrahimi](#) on [Unsplash](#)

## CRICOS

CRICOS Provider Code: 00098G

## Acknowledgement of Country

We acknowledge the Bedegal people who are the traditional custodians of the lands on which UNSW Kensington campus is located.