

From: Janelle Farmer
To: CPHCE Conjoint & Adjuncts; CPHCE-all staff; CPHCE PhDs & Students; CPHCE-Friends; CPHCE Steering Committee; CPHCE Advisory Group; UNSW Social Media Community; CPHCE Collaborators
Subject: CPHCE Bi-monthly Email Newsletter July - August 2023
Date: Thursday, 7 September 2023 3:27:15 PM
Attachments: [image001.png](#)
[image002.png](#)
[image004.png](#)
[image006.png](#)
[image010.png](#)
[image016.png](#)
[image017.png](#)
[image018.png](#)
[image019.png](#)
[image020.png](#)
[image021.png](#)
[image022.png](#)
[image023.png](#)
[image003.png](#)
[image005.png](#)
[image008.png](#)
[image012.png](#)

CPHCE Bi-monthly Newsletter

July – August 2023



Highlights

- **The CPHCE Annual Forum 2023 will be held on 31st October 2023 at the Galleries Combined (1&2) Room at John Scientia Building, UNSW.** This year we are having Emeritus Professor Mark Harris present the Ian Webster Oration highlighting his contribution to primary health care and equity over his career and his views of the current challenges in primary health care. The forum is free to attend, registrations are now open at this [link](#). Registrations will close at 5.00 pm on Friday 20th October 2023.
- **We are in the process of seeking an exceptional individual to assume the pivotal role of Director, CPHCE**, within the Faculty of Medicine & Health at UNSW. For more details of the Director position, please see the [microsite](#).

Nina Serova, Esther Alloun and Aryati Yashadhana had a blog post published on **The Refugee Mental Health & Place Network blog** entitled "[Making place in refugee health research: an Australian perspective](#)". In this blog, they explore the relationship between place and health and wellbeing among recently resettled refugees in high-income countries such as Australia and the UK. This comes in the light of refugee policies in wealthy nations such as Australia relentlessly focussing on policing their borders, while the number of displaced people around the world has ballooned to 108.4 million.

The Launch of the **Working Together Collaboration for Health Guide** by Marilyn Wise, Liz Harris, Penelope Finlay and Don Nutbeam was held at the SLHD Sydney Innovation Week on 20 July 2023. The launch presentation was given by the Director or HERDU, Fiona Haigh (on behalf of Marilyn wise who was unwell) and the Awards were given by Liz Harris. The award ceremony included the winners reading their poems. More information about the Sydney Innovation Week is available here: [Whole Session: Sydney Innovation & Research Symposium Day 1 - Afternoon Session - York Theatre on Vimeo](#) (The launch event begins at time 1:59:00). In the lead up to the launch, 86 Public Primary Schools and School for Specific Purposes were invited to participate in a poetry competition where students were asked to write about the themes of working together, collaboration, and the power of communities. 66 student entries were received. Health District staff were also invited to participate in a poetry competition, focussing on the theme of 'collaboration'. HERDU are collaborating with the District's School Health Promotion Team on next steps, and will be visiting all the schools that participated in the competition - awarding secondary prizes for participation.

People

Dr Peri O'Shea - Research Officer

[Peri O'Shea](#) has just joined us to work on the SHAReD: Shared Health Arrangements Research & Development project as a research officer. She is a Lived Experience Academic who specialises in qualitative, participative research in the mental health sector drawing on her academic and lived experiences. Peri has substantial research and teaching experience in Academic, Public Health and Community settings working with people with lived experience of mental health challenges and their families; mental health and disability practitioners; policy officers; academics, and community leaders. Peri's work and personal histories have given prominence to social justice, social inclusion and participation. Peri has a strong history in working with Human Service NGOs and in-service management and a strong understanding of mental health policy and consumer issues. Peri has degrees in psychology and social policy, a PhD in Applied Sociology and a lived experience of mental illness as both a consumer and a carer.

Communication

- Evelyne De Leeuw and Patrick Harris' first issue of [Oxford Open Infrastructure and Health Journal](#) has been launched.
- CPHCE's PhD candidate Glen Ramos has recently been appointed as a Director on the [National Board of the Australian Health Promotion Association](#).
- Catherine Spooner presented the paper 'Electronic shared-care with mental-health services, consumers and GPs: trials and tribulations in a pandemic' at the [AAPC conference](#) in Melbourne on Thursday 17 - Friday 18 August.

Events

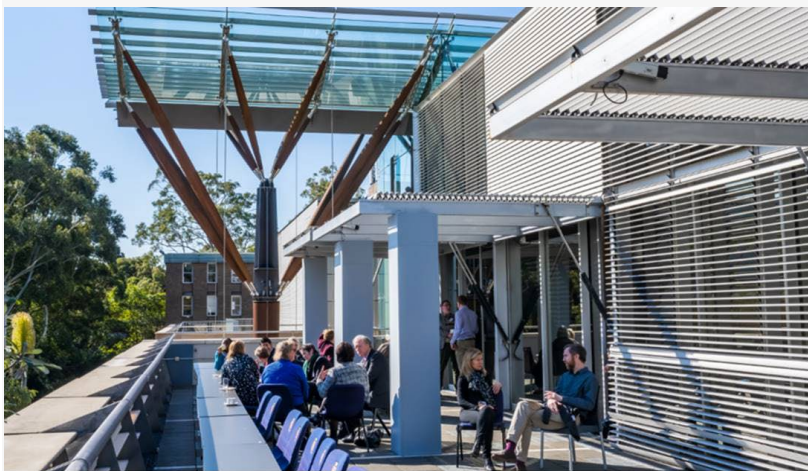
Esther Alloun & Fiona Haigh presented at an online seminar 'Equity infrastructures and just health care in pandemic times: A case study from New South Wales' on Tuesday 8 August 2023 at 3-4pm. For more information please click [here](#).

- Evelyne de Leeuw presented at the latest research online seminar series of 'Politics, Cities, Pandemics and One Health' by Monash Sustainable Development Institute (MSDI) on Thursday 17 August at 12-1pm. For more information please click [here](#).

Publications

- [Land Use Planning for Equitable Health Outcomes \(LUPEHO\) A preliminary review of two land use planning instruments \(as applied to Western Sydney\)](#)
By Patrick Harris & more
- [Incremental effectiveness of 23-valent pneumococcal polysaccharide vaccine against pneumonia hospitalisation among Australian Indigenous children: A record linkage study](#)
By Alamgir Kabir & more
- [A rapid review of initiatives to address financial strain and wellbeing in high-income contexts](#)
By Aryati Yashadhana, Karla Jaques, Patrick Harris, Evelyne de Leeuw & more
- [Health Policy Analysis Requires Attending to Institutions: Comment on "Modelling the Health Policy Process: One Size Fits All or Horses for Courses?"](#)
By Patrick Harris
- [By gutting the Greater Cities Commission, the NSW government is setting up itself and Sydney for failure](#)
By Patrick Harris & more
- [Characteristics and Health Service Use of a Longitudinal Cohort of Carers Aged over 45 in Central and Eastern Sydney, Australia](#)
By Ben Harris-Roxas, Alamgir Kabir, Rachael Kearns, Margo Barr & more

Follow CPHCE on Twitter



Centre for Primary Health Care and Equity
Faculty of Medicine & Health
Level 3, AGSM Building
University of New South Wales
Sydney NSW 2052

Ph +61 2 9385 1547

Follow Us



Copyright © 2023 UNSW Sydney. All rights reserved. CRICOS Provider Code 00098G