

The Housing Analytics Lab



The **Housing Analytics Lab** is a state-of-the-art facility for developing an ecosystem of digital tools to support better housing outcomes for Australians.

The Housing Analytics Lab is led by **UNSW's City Futures Research Centre**, with a consortium of partners across industry, academia, government, community housing and not-for-profit sectors.



Photo by Tom Rumble on Unsplash

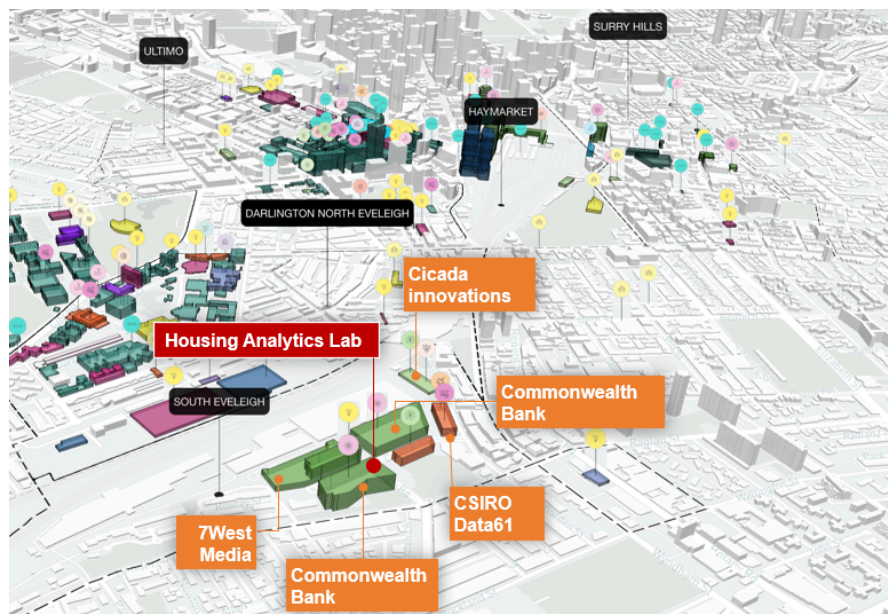
"The Housing Analytics Lab comes at an important time for housing policy in Australia, and we're thrilled to have this chance to develop cutting-edge data and technological capabilities to support researchers and decision-makers".

- **Professor Pascal Perez, Director Australian Urban Research Infrastructure Network (AURIN)**

The Housing Analytics Lab is both a **digital space for data sharing and analysis** and a **physical space for events, cross-sector engagement, and showcasing data products and outcomes**.

The **digital space** hosts housing data and digital tools [through the Australian Housing Data Analytics Platform](#) to help researchers, planners and policy-makers understand current and future housing challenges and opportunities.

Hosted in Tech Central at South Eveleigh, the **physical space** provides open access to cutting-edge technology, equipment, and technical services. It is a space for running exhibitions, masterclasses and workshops to build capability and codesign digital solutions, measure progress and track outcomes across housing policy.



Complex problems need data-driven solutions.

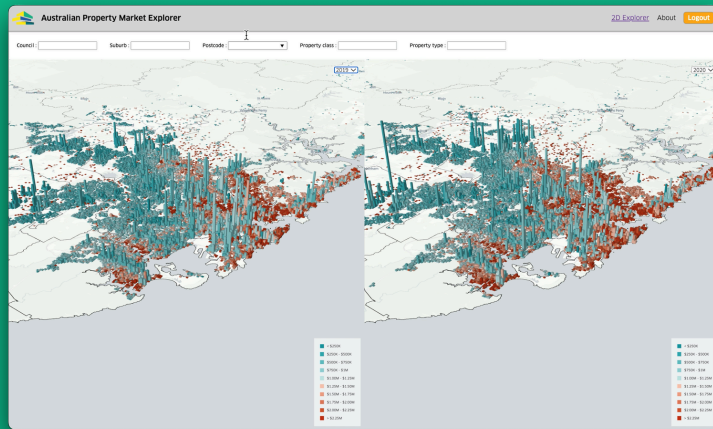
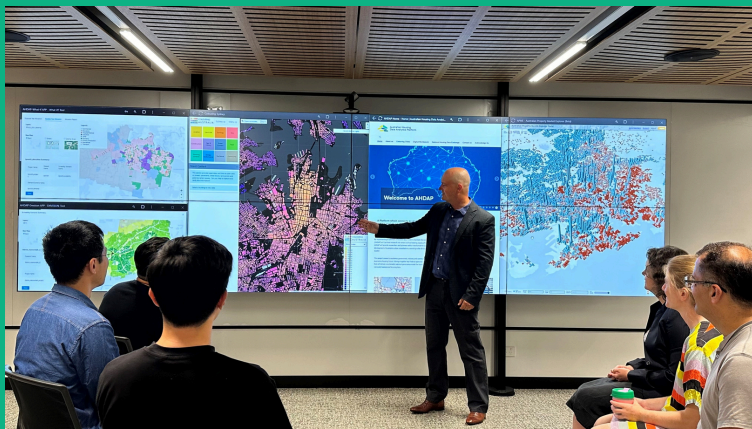
The Housing Analytics Lab uses new technology solutions and contemporary data products to help tackle urgent housing challenges: by unlocking data, and connecting stakeholders and decision-makers.

Some examples of how government and industry can work with the Housing Analytics Lab to create new insights^ include:

- **Social and affordable housing demand** by local government area.
- **Greenfield land supply**: Real-time pipeline of land zoned for future housing, connected to utilities.
- **Infill land supply**: Pipeline and delivery of multi-unit apartments from approval to final settlement.
- **Vacant properties** by local government area.

^ Subject to data licensing agreements with data custodians.

For more information, visit unsw.to/HAL. To find out how to get involved, please contact Project Manager Dr Edgar Liu at edgar.liu@unsw.edu.au.



Chief Investigators



Professor Chris Pettit
Director
City Futures Research Centre
UNSW
E: c.pettit@unsw.edu.au



Dr Balamurugan Soundararaj
Research Fellow
City Futures Research Centre
UNSW
E: s.bala@unsw.edu.au



Professor Hazel Easthope
Deputy Director
City Futures Research Centre
UNSW
E: hazel.easthope@unsw.edu.au



Professor Bill Randolph
City Futures Research Centre
UNSW
E: b.randolph@unsw.edu.au

Funders and Partners



**Chief Scientist
& Engineer**



**Commonwealth
Bank**



**UNSW
City Futures
Research Centre**



**FRONTIER
S I >**

