

# Leica CS15 & GS15 quick start guide

Edited by Dr Yincai Zhou  
 Surveying and Geospatial Engineering  
 School of Civil and Environmental Engineering, UNSW, SYDNEY



v2019-02-28

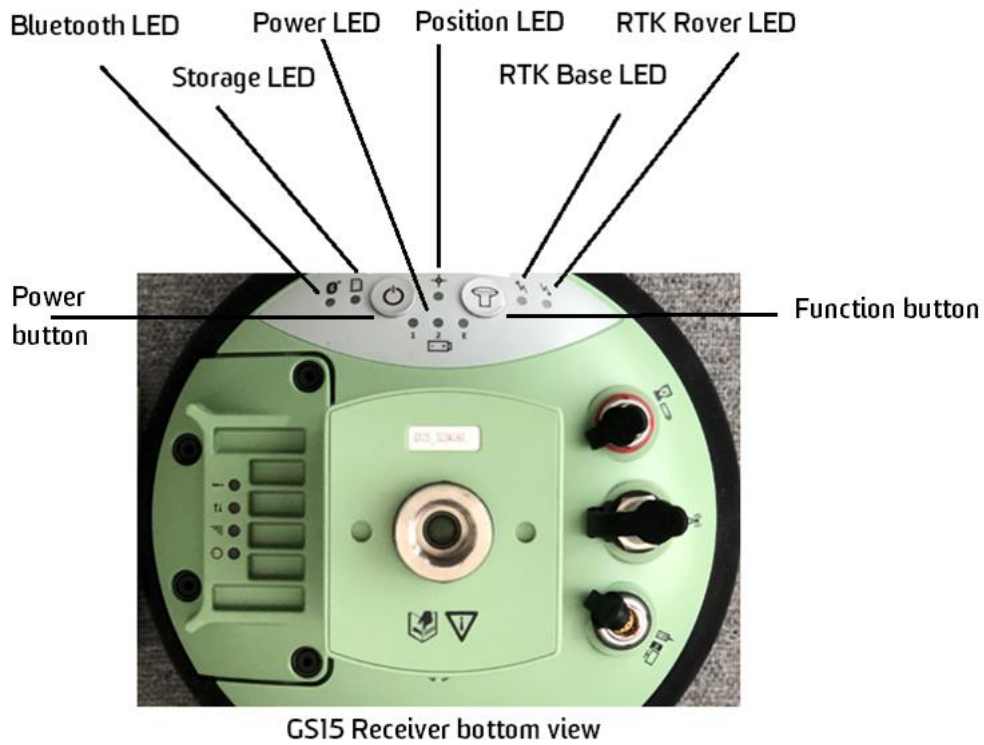
## Contents

1. What in the box? .....	1
2. GS15 Buttons and LEDs .....	2
3. CS15 GNSS Icons .....	2
4. Pre-field checklist .....	2
5. Quick start guide.....	3
6. Switch between GDA94 and GDA2020.....	4

## 1. What in the box?

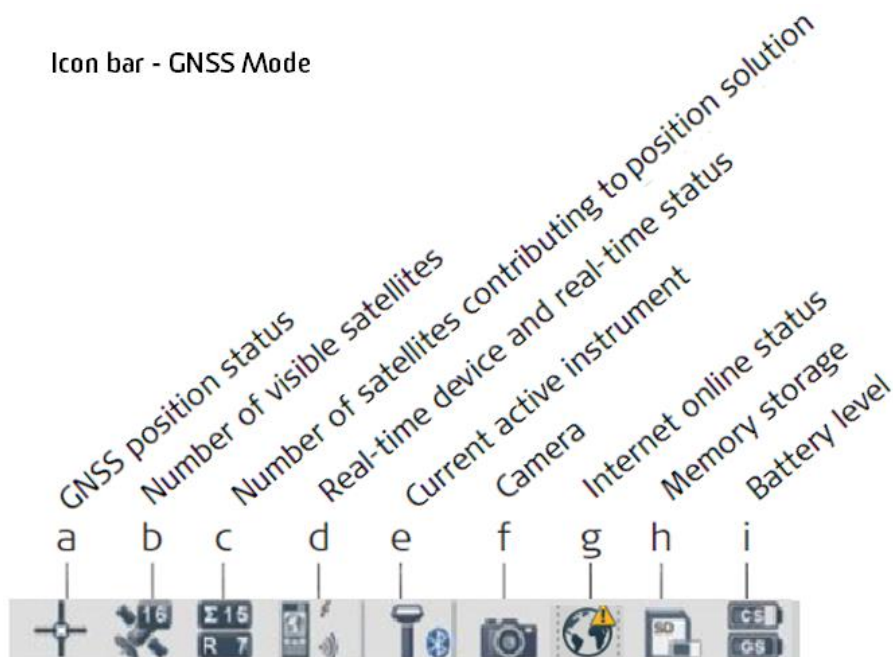


## 2. GS15 Buttons and LEDs



## 3. CS15 GNSS Icons

Icon bar - GNSS Mode







## 4. Pre-field checklist

- GS15 receiver
- CS15 controller + CS15 holder + stylus
- 3 Charged batteries
- Leica pole + CS15 holder pole mount

- Bipod (for RTK control survey)
- Charger / power cable
- Tribrach and receiver adapter for tripod mount (static survey)
- Survey tripod (static survey)
- SD card (inside CS15 controller)
- SD card reader
- SIM card in CS15 (Telstra mobile broadband subscription with plenty of data for RTK survey)

## 5. Quick start guide

It has been configured for RTK survey. However, the configuration may have been changed by some users. If it does not work straightaway, please refer to this quick guide.

- Switch on C15 (by pressing ) & G15 (press and hold  for 3 sec)
- Enter Rover Mode if it is in Base Mode.
- Instrument – GPS Settings – RTK Rover Wizard – Load Existing Profile (e.g. gmat9205) – back to main menu
- User – Working Style Wizard – Choose a Different Working Style (e.g. gmat9205) – back to main menu
- Jobs & Data – New Job – Setup a New Job (you may need to setup coordinate system etc.) – back to main menu
- Go to Work – Survey
- Press ★ key
- Select Start RTK Stream
- Position quality icon  changes to  in a few minutes if RTK accuracy is achieved.

### Existing RTK Profiles:

- Gmat2700 GDA94
- Gmat2700 GDA2020
- Gmat9205 GDA94
- Gmat9205 GDA2020
- SurvCamp GDA94
- SurvCamp GDA2020
- Smartnet GDA94
- Smartnet GDA2020
- SLR900RTK GDA94
- SLR900RTK GDA2020
- RTK Surv GDA94
- RTK Surv GDA2020

### Existing Working Styles:

#### (Independent from RTK Profiles and GDAs)

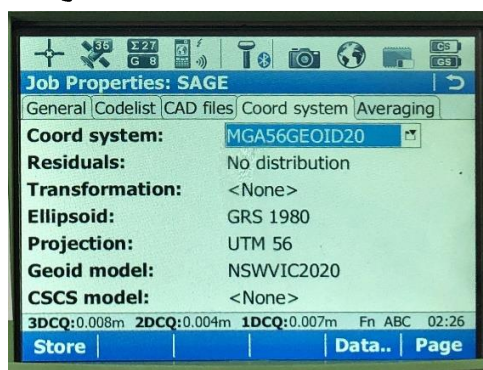
- Control Survey ( $\pm 3\text{cm}$ , 30sec, TH=1.8m)
- Detail Survey ( $\pm 5\text{cm}$ , 3sec, TH=1.8m)
- Gmat2700 ( $\pm 5\text{cm}$ , 10sec, TH=2m)
- Gmat9205 ( $\pm 3\text{cm}$ , 10sec, TH=2m)
- RTK Rover
- SS
- Static
- Static Pillar
- Static Tripod

## 6. Switch between GDA94 and GDA2020

Leica VIVA receivers have been configured to work with both GDA94 and GDA2020. A quick switch between GDA2020 and GDA94 is by following the steps in 6.1 and 6.2. The same Working Styles can be used for both GDA94 and GDA2020. To get correct AHD heights, AUSGeoid09 can only be used for GDA94 and AUSGeoid2020 is for GDA2020 only.

### 6.1 Work with GDA2020

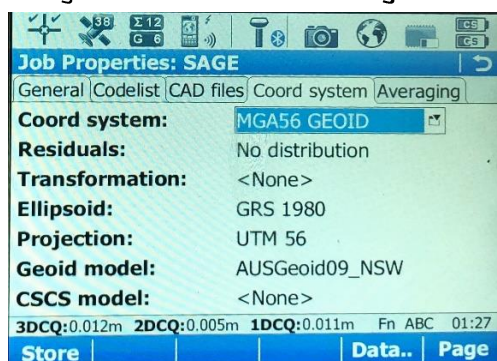
- Load an existing RTK Profile with GDA2020 in its name
- Create a new job or use an existing job.
  - ✓ From main menu select Jobs & Data
  - ✓ Select Job Properties
  - ✓ Select Coord System tab
  - ✓ Change coordinate system to MGA56Geoid20
  - ✓ The geoid model should be NSWVIC2020 (in NSW).



- ✓
- ✓ Store.

### 6.2 Work with GDA94

- Load an existing RTK Profile with GDA94 in its name
- Create a new job or use an existing job.
  - ✓ From main menu select Jobs & Data
  - ✓ Select Job Properties
  - ✓ Select Coord System tab
  - ✓ Change coordinate system to MGA56 Geoid
  - ✓ The geoid model should be Ausgeoid09\_NSW (in NSW)



- ✓
- ✓ Store.