



Peron Naturaliste Partnership

A 5 Year Journey

ACCARNSI

28th September 2016





Overview

- » Background
- » Who is the PNP?
- » Key Achievements
 - » Partnerships
 - » Major Projects
 - » What's next?
- » Take home messages





Background

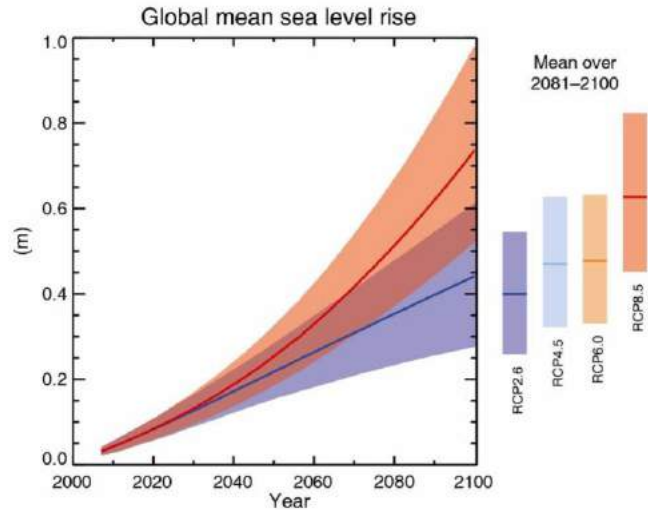


Fig. SPM.9

Global mean sea level will continue to rise during the 21st century



Peron Naturaliste Partnership

Vision Statement

The vision of the Peron Naturaliste Partnership is to empower a resilient regional community to reduce risks and optimise opportunities presented by climate change.





Corporate Plan 2016-2019

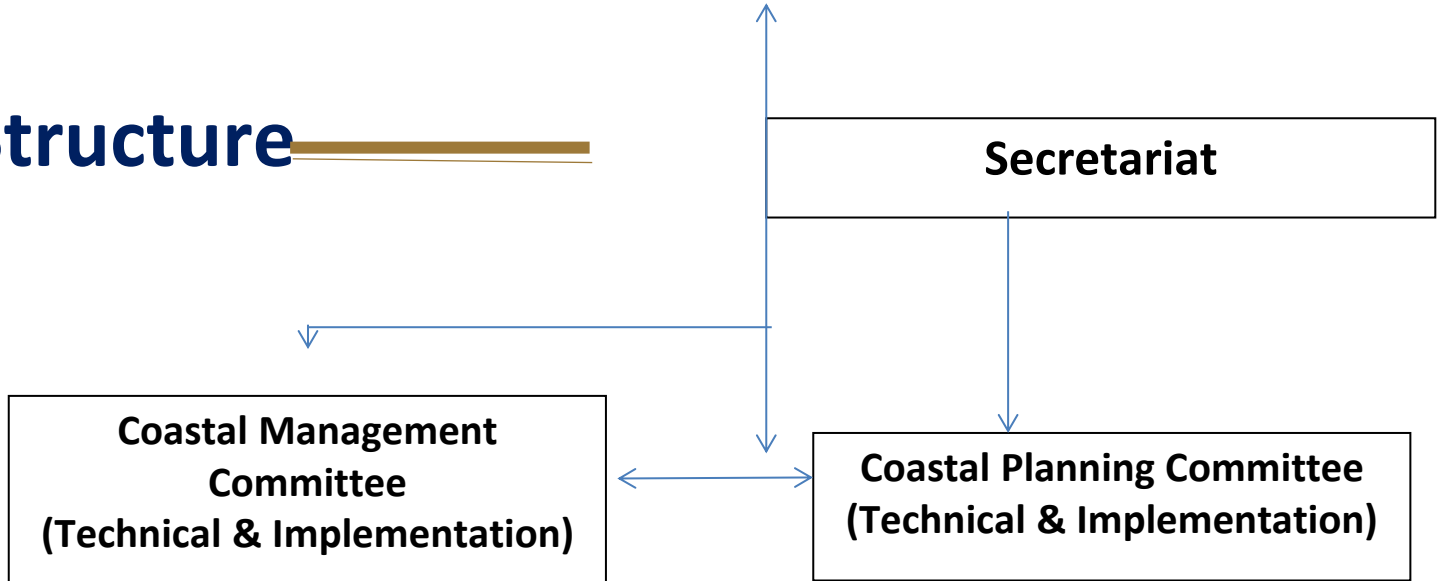
Strategic Direction

- 1. Research and implementation of coastal adaptation**
- 2. Collaboration among Member Councils, stakeholders and our communities**
- 3. Advocate for effective coastal adaptation**



**PNP Board of Governors
(Strategic Direction, Policy & Management)**

Structure





Communication Strategy 2016-2019

- » Link to current **best practice** initiatives
- » **key messages**
- » **protect the existing partner's organisational brand, image and reputation**
- » **guide external and internal communication**
- » **public participation**
- » **knowledge management**
- » **Online platform**



This framework supports the delivery of communications for the Peron Naturaliste Partnership.





Key Achievements

- Australian Coastal Awards 2015 - Climate Adaptation, Australian Coastal Councils Association
- Attracted funding totaling **\$684,000**
- NCCARF Partnership Toolbox Development Partnership and Poster Award
- PNP became Incorporated in 2015



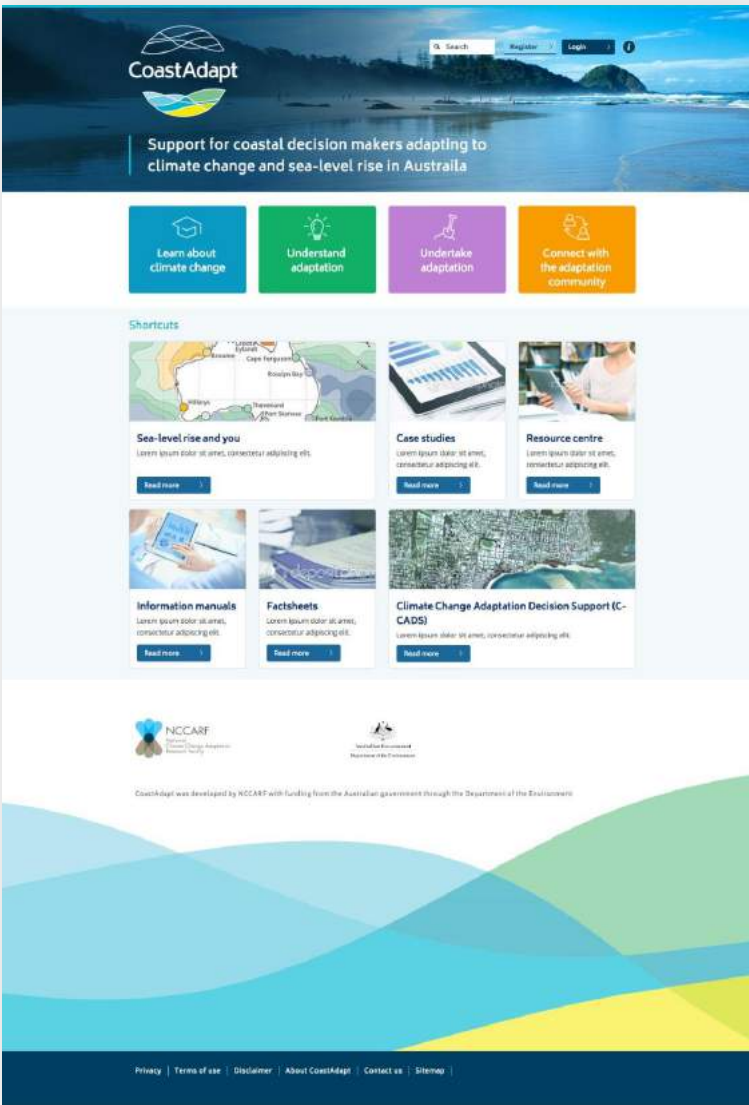


Partnerships

- Academic - NCCARF
- Government
- Regional NRM
- Community Groups
- Consultants

Partner Projects

- Coast Adapt
- CSIRO Murray Modelling
- CSIRO Bunbury Modelling
- Local Projects



CoastAdapt features



- Information on 60+ topics
- Decision support framework (C-CADS)
- Online forum for peer to peer learning
- Case studies
- Technical Information Manuals
- Data and information to understand risk (e.g. sea level rise projections, maps)



The Peron Naturaliste Partnership acknowledges all Traditional Owners
past, present and future of the lands shown in this video



Coastal Adaptation Decision Pathways Project 2011-2012

- » Phase I is a synthesis of coastal hazards affecting the region (DOT Funding).
- » Phase II is a regional-based assessment of impacts, specifically comparing present day conditions with those projected for 2110.
- » Phase III is a detailed locally-based assessment of impacts and potential responses, which will change over time. Developing adaptation options considers real options approach



Project Specific Documents



CAPS Fact Sheet &
FAQ

Coastal Hazard Mapping
Report and Technical
Note

Climate Change
Adaptation Options
Assessment Report



Region-Wide Assessment – Key Outcomes

- » Erosion is a more pervasive issue than flooding
- » 800 hectares of residential land would be subject to an increase in flooding risk
- » Approximately 200 metre wide strip potentially is at risk from erosion along the whole extent of the coastline.
- » The value at risk of the affected assets along this section of coastline is approximately \$1.2 billion
- » \$1.1 billion of assets can be saved, at a cost of around \$120 million



Case Study Assessment – Key Outcomes

- » Four sites: Mandurah, Eaton-Australind, Peppermint Grove Beach and Siesta Park-Marybrook
- » Economically viable adaptation options that provide significant net benefits from protection were identified for three sites
- » Results are perhaps not as important as the process



Developing Community Awareness of Coastal Adaptation to Climate Change in Busselton 2013 (Coastwest funded)



Phase 1: Curtin University Google Earth Mapping Workshop and Workshop Report was implemented for Busselton and for use across the PNP Region.

Phase 2: A Pilot Plan and report (prepared by NCCARF ACCARRNSI) are available on the PNP Website.



Phase 1: Mapping Workshop

Objectives

- develop shared understandings about the impacts of climate change on Busselton's coasts and waterways, and to develop pathways forward.
- map participants' ideas and identify areas at risk
- Results contribute to ongoing coastal adaptation planning and risk management.



Phase 2: the pilot Plan

1. Identified hotspots and emerging adaptation pathways
2. Feedback concerns and opportunities identified in the hotspot mapping
3. Providing information on the WA coastal decision-making hierarchy i.e. State Planning Policy 2.6
4. Drilling down into unresolved issues



Regional Coastal Monitoring Program

- Oblique Aerial Photos
- Database Input Export Tool
- Gap Analysis and Summary Report
- Coastal Monitoring 10 Year Action Plan
- Regional Coastal Monitoring Standards and Manual
- Implementation Phase



Regional Coastal Monitoring Program

- The PNP RCMP developed by the PNP to help improve understanding and local land managers **capacity to respond to erosion and inundation hazards on the coastal zone.**
- Information / data can be incorporated into existing monitoring programs, these vary between the member councils related to available resources, methods and techniques of coastal monitoring.
- The project developed a **long term coastal monitoring program with member councils and the long term 'Action Plan'**.
- The project considered current coastal and estuarine monitoring methods.



Shire of Harvey Coastal Hazard Risk Management Adaptation Plan

- The Shire is finalising a technically robust Coastal Hazard Risk Management Adaptation Plan (CHRMAP) to use in planning for its coast and particularly in the management of coastal assets.
- The CHRMAP follows on from the regional Coastal Adaptation Pathways (CAPS) project which identified areas where future impacts from coastal erosion and inundation are likely to affect the Harvey coast.



Shire of Harvey Coastal Hazard Risk Management Adaptation Plan

- This project will be used as a case study or a ‘best practice’ example for other member councils on how to undertake a CHRMAP.
- The intent is to translate strategic information, and local community understanding into a document that is practical and accessible.
- The outcomes and recommendations will provide direction for the Shire of Harvey in budget forecasts and spending on coastal assets and management.



What's Next?

- » Regional Coastal Monitoring Program
- » Understanding local values for CHRMAP
- » Harvey CHRMAP Template and Geotech Assessment
 - » NCCARF TIP Partnership
 - » Communications Strategy
 - » Newsletter
- » Website and Database Development



Take home Messages

- » Identify triggers for new decisions and low regret options
- » Local government will continue to work together with / and lobby to the state government on outcomes for the Peron Naturaliste coastal region of Western Australia
- » there could be a bigger role for community and traditional owners in ongoing coastal adaptation planning.



THANK YOU

Joanne Ludbrook
Climate Change Adaptation Coordinator

p: 9550 3253
m: 0439964931
e: joanne.ludbrook@mandurah.wa.gov.au
e: peronnaturalistepartnership@mandurah.wa.gov.au

visit: 3 Peel Street MANDURAH
post: PO Box 210 MANDURAH WA 6210
web: www.mandurah.wa.gov.au

