

Study Abroad and Exchange
Student Guide

2026

Seek new perspectives



UNSW
SYDNEY

What's inside

| | |
|--|------------|
| Live the dream and study in Sydney | p4 |
| Welcome to Sydney | p6 |
| Get the full experience | p8 |
| Live in the heart of everything | p10 |
| Uni life, your way | p12 |
| Find your new home | p14 |
| Discover the right study plan for you | p16 |
| Study Abroad | p20 |
| How to apply | p23 |
| Student Exchange | p24 |
| How to apply | p27 |
| Study Abroad Research Practicum | p28 |
| How to apply | p31 |
| Contact us | p33 |

CRICOS Provider Code: 00098G | ABN: 57 195 873 179

© UNSW Sydney 2025

DISCLAIMER: UNSW programs, courses and any arrangements for programs and fees including staff allocated, as stated in the guide or any other University publication, announcement or advice of the University, are an expression of intent only and are not to be taken as a firm offer or undertaking. The University reserves the right to make alterations to any matter contained within this publication without notice. Information in this Guide is accurate as of August 2025, but may be amended without notice by the University. All costs and fees are provided in Australian Dollars (\$A). Any agreement with the University does not remove the right to take action under Australia's consumer protection laws.

COMPLIANCE: The Education Services for Overseas Students (ESOS) Act 2000 sets out the legal framework governing delivery of education to overseas students studying in Australia on a student visa. UNSW in providing education services to overseas students complies with the ESOS Framework and the National Code of Practice for Registration Authorities and Providers of Education and Training to Overseas Students 2018 (The National Code). A description of the ESOS framework can be found at the following link: internationaleducation.gov.au/Regulatory-Information/Pages/regulatoryinformation.aspx



"I love the vibe here. It's near the beaches and I love surfing, so that's awesome. Transportation is so good, and I can get everywhere quickly and easily. It's really simple to meet people - there are lots of different events going on, so it's easy to fit in."

-
Yilin Yang (Taiwan)

"Most university programs in Australia go through to July and that would not allow me to do a summer internship back home in America. But since they switched to the 3+ term system here at UNSW, it works out perfectly for me."

-
Allyson Ehlers (USA)

"Sydney is so beautiful. I find it a very multicultural city which is great, especially with all the different food options! The people are really friendly and always smiling."

-
Juan Camillo Zapata-Trujillo (Colombia)

Live the dream and study in Sydney

Studying abroad is about more than just your degree – it's about meeting new people, enjoying new experiences and shaping your personality as well as your future.

And where better to do that than UNSW Sydney? If you've ever imagined studying just minutes from world-famous beaches while still being on the doorstep of a bustling international city, then UNSW Sydney is the place for you.

Come and expand your education, boost your work opportunities and experience a lifestyle that seamlessly combines sun, surf and study. And what's more, our innovative academic calendar aligns well with Northern Hemisphere university calendars. So, you can study abroad when it suits you.

We look forward to welcoming you to UNSW Sydney.

Welcome to Sydney

Ready to embark on an unforgettable journey? Sydney is more than just a city – it is a vibrant, multicultural hub that welcomes students from around the world.

There is always something to do in Sydney, and UNSW is right in the heart of it all.



Take a break and explore

Sydney is a lively city with world-class beaches, iconic landmarks, and a vibrant cultural scene. Whether you are into arts, sports, or simply relaxing by the water, there is something for everyone.

From the world-famous Sydney Opera House to the stunning Royal Botanic Garden, there are endless opportunities to explore and experience the city. Immerse yourself in the excitement of major sporting events, like cricket matches and rugby games, or attend cultural festivals such as Vivid Sydney and Chinese Lunar New Year. Art lovers can explore the renowned Art Gallery of New South Wales, home to a large collection of Australian and international art.

With so much to see and do, Sydney is the perfect place to take a break from your studies and create unforgettable memories.

➤ Keep exploring what you can do in Sydney and learn about international student perks with our local guide: unsw.to/sydney-life.



6th best

place to live and study in the world

QS Best Student Cities, 2026



4th safest

city in the world

The Economist Intelligence Unit's Safe Cities Index, 2021



6th most liveable

city in the world

The Economist Intelligence Unit's Global Liveability Index, 2025

Join a diverse, welcoming community

Imagine yourself surfing at world-famous beaches, exploring bustling markets and savouring diverse cuisines. As a Study Abroad or Exchange student, you will be part of a thriving community where you can connect with like-minded people, make lifelong friends, and experience a truly global lifestyle.

Immerse yourself in Australian culture, learn local slang, try your hand at sports like rugby and cricket, and embrace a new way of life. From the Italian charm of Leichhardt to the Asian vibrancy of Cabramatta and Strathfield, Sydney offers a unique blend of cultures.

With its stunning natural beauty, friendly locals and endless opportunities, Sydney is the perfect place to study and grow.

Feel safe and secure

Sydney is consistently ranked as one of the safest cities in the world*, offering a secure and welcoming environment for international students.

You will be surrounded by friendly locals and a supportive community. At UNSW, we go the extra mile to ensure your safety with 24/7 security staff on campus and night shuttle bus services to help you get around after dark. So relax, explore and make the most of your study abroad experience.

*4th Safest City, The Economist Intelligence Unit's Safe Cities Index, 2021

Great weather year-round

Sydney's stunning weather is one of the top reasons students choose to study here. Enjoy sunny days and warm temperatures year-round – perfect for beach days, outdoor activities and a vibrant lifestyle.

From December to February, bask in the summer sun with average temperatures reaching 25°C/77°F or more. During the winter months of June to August, experience mild temperatures between 9–17°C/48–63°F, ideal for exploring the city and its stunning natural surroundings. If you are craving a winter adventure, snow resorts are just a short trip away.



Sydney is so beautiful. I find it a very multicultural city, which is great – especially with all the different food options! The people are really friendly and always smiling. Sydney is a wonderful city and UNSW is a great university. There are so many resources here for students.

–

Juan Camillo Zapata Trujillo



UNSW's Village Green



Get the full experience

At UNSW, there are so many opportunities for you to explore and grow.

With each new experience, you will discover the progress you can make and what motivates you to succeed.

We support your journey

At UNSW, we want you to feel welcomed and supported from the moment you enter the country. To ensure you have a smooth arrival and an unforgettable experience, we offer a range of services for commencing international students.

Before your trip

Book your free **airport pick-up service** and get matched with a **cultural mentor** – a senior student 'buddy' who will answer all your questions about UNSW and Sydney.

After you arrive

Your mentor can help you learn about Australian culture, customs and settling into student life at UNSW.

Before term starts

There are lots of welcome and orientation activities to familiarise you with the campus and university life. Join our **new-arrival workshops**, **campus tours**, **myEnglish Week** and **O-Week** that are run at the start of Term 1, Term 2 and Term 3.

Our dedicated **International Student Welcome Centre** and **Student Support Advisers** provide personalised advice and information on university life, student visas, wellbeing and academic performance. They cannot wait to meet you in person!

For more information, visit student.unsw.edu.au/international

Your safety matters

The safety and wellbeing of our students is our number one priority.

You will feel safe and secure on campus with our 24/7 security services, which include safety escorts and night shuttle buses. Our [SafeZone app](#) allows you to easily access personalised emergency assistance and report safety concerns at your fingertips.

Enjoy diverse community activities

Studying abroad is about more than just textbooks and lectures. You will meet people from around the globe, discover yourself in a new environment and shape your view of the world.

At UNSW, there are so many ways to explore, experience and enjoy university life.

- **Music Performance Unit:** Take your musical talents to the next level, connect with fellow music enthusiasts or chill out at an on-campus concert.
- **Cultural clubs:** Feel at home and make friends from around the world with our 37 cultural clubs. Celebrate UNSW's diverse and dynamic culture with events such as the International Night Markets, where you can taste iconic street food from different countries and meet new people.
- **Religious Centre:** Connect with diverse faith communities on campus. Find support through worship services, spiritual guidance and prayer meetings, with dedicated spaces for various faiths.
- **Arc | UNSW Student Life:** Step away from the books with Arc, our student-led organisation. Arc is home to more than 350 clubs and hosts year-round events, sports, volunteering opportunities, health and wellness sessions... the list goes on. Build connections and find your people at arc.unsw.edu.au.



When I came to UNSW, I realised the university has a fantastic student life and also has a stunning location just down from the beach.

–
Tom Houlden

UNSW's Village Green – your playground on campus

The Village Green Precinct is your home for sport, recreation and wellness at UNSW. Our state-of-the-art facilities include multipurpose courts and sports fields, a running track, outdoor fitness equipment, a bouldering wall and landscaped social spaces. The Village Green is an inclusive space where you can connect with other students, staff and community members to play, exercise, socialise and relax.

Live in the heart of everything

UNSW's primary campus is located in Kensington, a welcoming and diverse inner-city neighbourhood perfectly placed between the beach and the city, so you will enjoy the best of what Sydney has to offer.

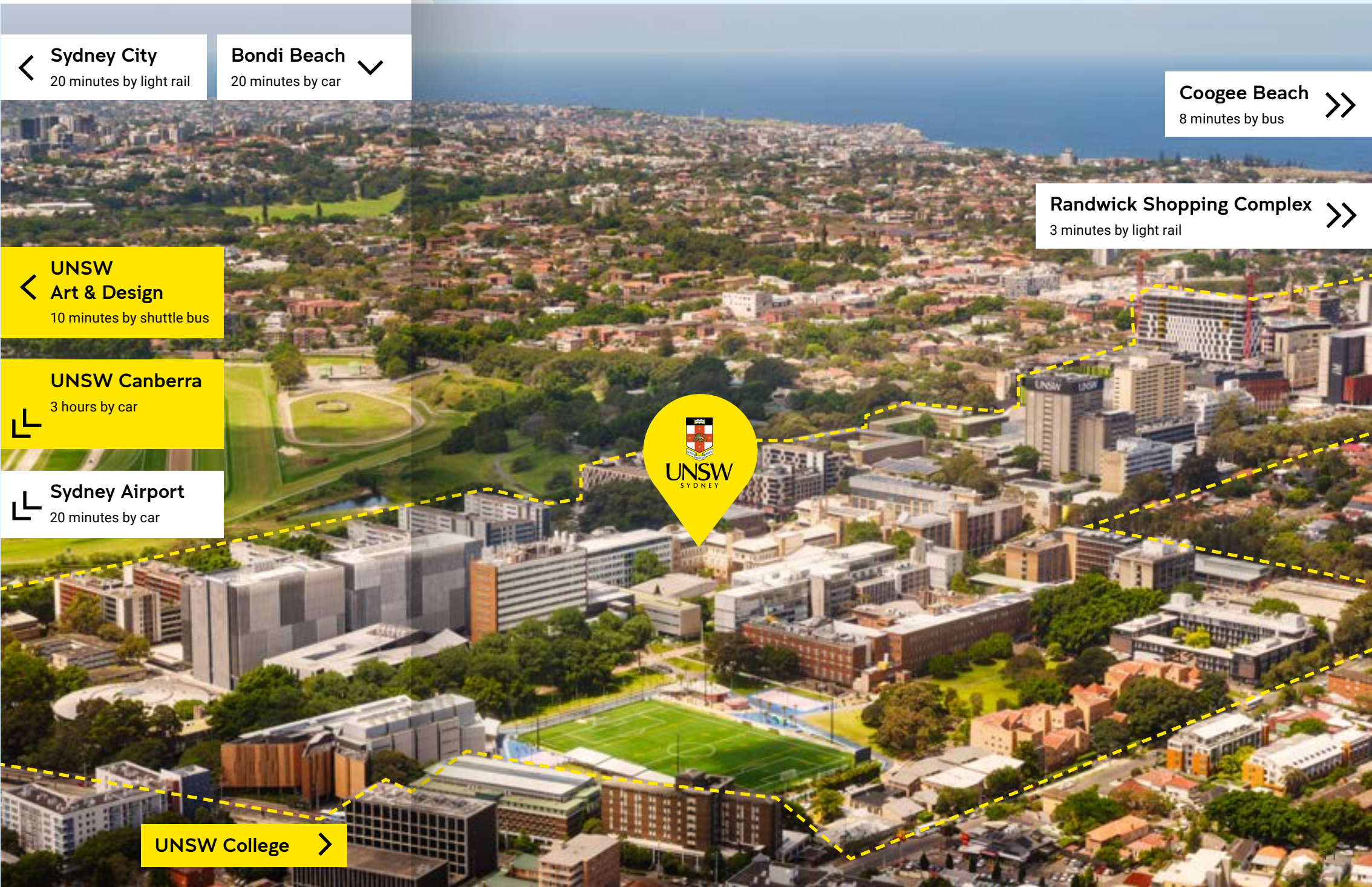
There are train, bus and light rail options that run from UNSW campuses throughout Sydney at all hours of the day. Explore Sydney city by light rail in just 20 minutes, or visit beautiful Coogee Beach, just eight minutes away by bus.

Numerous restaurants, shops, healthcare services and amenities are available around campus to meet your daily needs.



Take a virtual tour

Join us for the ultimate [campus tour](#) to explore our university and its surroundings. See where you will be eating, sleeping, playing and studying when you are in Sydney.



Uni life, your way

Our academic calendar is uniquely designed to give you the flexibility to structure your studies around your goals.

The current UNSW 3+ academic calendar has three 10-week teaching terms each year, commencing in February, May and September, with an optional summer term in January. With UNSW 3+, you will have access to:



Flexible study structure

Our innovative calendar makes it easy to plan your studies to suit your academic needs and timeframe. With three standard terms as well as a Summer (January) and Winter (August) term, you can choose between a Term, a Tailored Term, or year-long option.



Campus life

From state-of-the-art campus facilities to student clubs and societies, UNSW is committed to creating a vibrant student experience. Our campuses are equipped with everything you need for a comfortable and fun study abroad, with exciting events and opportunities running throughout the year.

➤ **Learn more about UNSW's academic calendar.**
Visit unsw.to/terms

*Minimum study load requirements as per your Australian Student Visa conditions must be maintained.

Introducing the UNSW flex-semester calendar from 2028

Our new flex-semester calendar has been created to support your unique learning and career needs. We will launch this structure from 2028, centring on delivering the best learning experiences and outcomes for all our students throughout their education journey.

What will a flex-semester look like?

Our new flex-semester calendar will include two 12-week teaching semesters, and summer and winter terms. With a 12-week semester, you will be able to engage more deeply with course material.

When will the new calendar be introduced?

We aim to introduce our new flex-semester calendar in 2028. We will endeavour to support a smooth transition, working with you to manage your study load.

Receive the support you need

Study and academic English success

Get the most from your studies with free consultations and academic writing workshops to help with essay and report writing, exam preparation, presenting with confidence and many other university skills.

Peer-Assisted Study Sessions (PASS)

Run by senior students, these sessions can help you improve your grades and make friends by studying with other students in your course. Visit unsw.to/pass-program.

myEnglish Week

Attend fun and interactive sessions before term starts to build your academic English language skills, make friends and learn how to succeed at UNSW. Visit unsw.to/myEnglishWeek.

Academic Skills Toolkit

Get quick self-help guides and online resources to improve your academic skills. Visit unsw.to/academic-toolkit.

➤ For more information, visit student.unsw.edu.au/skills and student.unsw.edu.au/English.

Wellbeing and mental health support services

Our Psychology and Wellness Team offers confidential face-to-face and telehealth counselling appointments, after-hours phone and text support, and a range of resources to help students improve their mental health and wellbeing and reach their academic potential. For more information, visit student.unsw.edu.au/counselling.

Disabilities and health conditions

If you have a disability or a medical or mental health condition that affects your studies, you can register with Equitable Learning Services (ELS) to obtain educational adjustments. These adjustments are actions or changes within your learning environment that allow you to study without disadvantage. Educational adjustments do not give you an unfair advantage over other students. ELS is a confidential service. Your teachers will not know details about your condition and it will not affect your visa.

To watch a video with subtitles in different languages and learn more, visit student.unsw.edu.au/els.



Find your new home

Most study abroad and exchange students live off campus, by the beach or in the beautiful suburbs surrounding the UNSW campus, such as Coogee, Clovelly, Maroubra and the iconic Bondi Beach. Sydney is a safe, accessible and vibrant city, with public transport connecting the UNSW campuses, beaches and city centre.

Private accommodation options

Rental property

Choose from numerous private rental properties located in the surrounding suburbs of UNSW. You can rent a furnished or unfurnished property. Be sure to consider additional expenses such as electricity, gas, telephone and Wi-Fi. Costs vary but usually range from \$A350 - \$A700 per student per week in a shared house or apartment.

Homestay

If you choose a homestay, you'll be sure to receive a warm welcome to Australia!

Homestay is an excellent choice for many international students as it offers a valuable cultural exchange with your local host family. The family you live with will provide you with a bedroom and pay all utility bills. You will need to arrange your own food, cooking, cleaning, laundry and telephone costs. Costs vary but usually range from \$A350-\$A450 per student per week.

Search our database of local private properties at: StudyStays.unsw.edu.au.

Private student housing assistance

UNSW Off-Campus Accommodation Support provides advice and resources to help you navigate the housing market and find safe and conveniently located off-campus housing across a range of budgets. For more information, visit: student.unsw.edu.au/accommodation

Temporary accommodation

We recommend having three to four weeks before classes begin to arrange private housing. Be sure to book short-term accommodation first, then look for long-term options in person. Short-term accommodation can include private hotels, motels, hostels, lodges or furnished apartments ranging from \$A55 – \$A300 per day.

Student Accommodation Providers

Sydney has several accommodation providers catering specially to students. These providers are located around Sydney – generally around 20-50 minutes by public transport from the UNSW campus. These options offer high-quality rooms with extra services and Facilities. Options include Iglu, Scape, Switch & Unilodge.

Accommodation at UNSW

A number of colleges are situated on the UNSW Kensington campus. Each college has its own application and enrolment process. You need to apply directly to each accommodation of interest separately. Visit unsw.edu.au/accommodation/colleges.

Living on campus compared to living off campus

| | UNSW affiliated | | Independent | |
|---|-------------------------|-------------------------|------------------------|------------------------|
| | UNSW Apartment | UNSW College | Share house | One bedroom |
| Set-up costs (Bond, furniture, utility connections, etc.) | \$A0 | \$A0 | \$A3,600 | \$A5,800 |
| Accommodation per week | \$A335 to \$A580* | \$A350 to \$A520* | \$A290 | \$A470 to \$A820 |
| Internet | \$A0 | \$A0 | \$A25 | \$A35 |
| Gas and electricity | \$A0 | \$A0 | \$A35 to \$A40 | \$A45 |
| Food (groceries and eating out) | \$A100 to \$A240 | \$A15 to \$A60 | \$A120 to \$A250 | \$A120 to \$A250 |
| Transport to university | \$A0 | \$A0 | \$A54 | \$A55 |
| Weekly total | \$A435 to \$A820* | \$A365 to \$A580 | \$A525 to \$A660 | \$A715 to \$A1,215 |
| Total annual cost | \$A22,620 to \$A42,640* | \$A16,060 to \$A25,520* | \$A30,900 to \$A37,920 | \$A42,980 to \$A68,980 |
| | 52 weeks | 44 weeks | 52 weeks | 52 weeks |

For more information, visit studyaustralia.gov.au/en/life-in-australia/living-and-education-costs

Living costs are indicative only and will vary based on the location, number of people you live with and the condition of the housing. The Australian government provides separate guidance on living costs, which must be evidenced during the Student Visa application process. Up-to-date information is available on the Department of Home Affairs website.

*Costs will vary depending on the type of accommodation and catering offered.

^UNSW residential college contract periods are 44 weeks thus may not be available for Study Abroad and Exchange students.



Discover the right study plan for you

We offer hundreds of courses across six academic faculties. Almost all UNSW courses in Sydney are available to Study Abroad and Exchange students with few exceptions: (eg courses in the Doctor of Medicine Program, honours level courses).

Tailor your term

Our flexible calendar offers you multiple study plans to choose from. Work out how many courses you need to transfer back to your home institution, which term dates suit, and build your program from there.

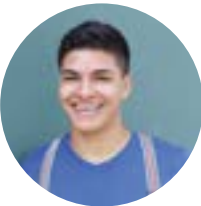
Three course option: this is a standard term with a full-time load of 3 courses (18 UNSW Credits /22.5 ECTS). You can choose from Term 1 or Term 3.

Four course option: this is a Tailored Term with a full-time load of 4 courses (24 UNSW Credits/ 30 ECTS). Students take 1 course in either our Summer (January) or Winter (August) Term, and 3 courses in a standard Term. (Students from Exchange partner universities may also be able to choose the Term 1 + Term 2 option.)

Six course option: this is a combined two term option with a full-time load of 6 courses (36 UNSW Credits/45 ECTS).

Eight course option: this is yearlong with a full-time load of 8 courses (48 UNSW Credits/ 60 ECTS).

Sample options:
Here are some examples of how you can plan your Study Abroad and Exchange experience with our flexible study plans.



Michael

Term 3

Michael has an internship at home during his summer break and wants to start in September. He only needs to take 3 courses.



Codie

Term 3 + Summer

Codie is from Germany and her semester aligns better with Term 3 + Summer than Tailored Term 3.



Sean

Term 1 + Term 2

Sean finds that the course offerings are a great fit and as he doesn't need to be back home until September, he spreads his study abroad over two terms



Tami

Tailored Term 1

Like Michael, Tami also has an internship starting in June, but her home university still requires her to take four courses. Tailored Term 1 allows her to take 1 course in the UNSW Summer term and 3 courses in Term 1 and still gets her home in time for her internship!

Choose the right course for you or challenge yourself with something new.

We have hundreds of courses available. Find a course that perfectly fits your studies back home, or challenge yourself with in a new subject area.

See full list of courses at handbook.unsw.edu.au

Creative Arts, Media & Design

- Animation
- Art history and theory
- Ceramics
- Curating
- Critical theory
- Design process
- Design computing
- Digital imaging
- Drawing
- Film
- Graphic design
- Interactive media
- Jewellery
- Metal casting
- Museum studies
- New media
- Object design
- Painting
- Photography
- Printmaking
- Programmable design
- Sculpture installation & performance
- Spatial design
- Sound
- Studio lighting
- Textiles
- Video
- 3D modelling
- 3D computer-aided design

Humanities & Social Sciences

- Advertising
- Anthropology
- Asian studies
- Australian studies
- Chinese studies

- Communication
- Creative writing
- Cultural studies
- Criminology and criminal justice
- Dance studies
- Development studies
- English literary studies
- Environmental humanities
- European studies
- Film studies
- French studies
- German studies
- History
- Indigenous studies
- Indonesian studies
- International relations
- International studies
- Italian studies
- Japanese studies
- Journalism
- Korean studies
- Latin America studies
- Linguistics
- Literature
- Media and culture studies
- Modern Greek studies
- Music
- Philosophy
- Politics
- Public relations
- Screen and sound production
- Social science and policy
- Social work
- Sociology
- Spanish studies
- Theatre and performance studies
- Women's and gender studies

Architecture & Urban Planning

- Architectural computing
- Architectural studies
- Construction project management
- Computational design
- City analytics
- City planning
- Industrial design
- Interior architecture
- Landscape architecture
- Property and development
- Sustainable development
- Urban development and design

Business & Economics

- Accounting
- Actuarial studies
- Banking*
- Business analytics
- Business law
- Business strategy
- Economics
- Finance
- Financial technology
- Human resource management
- Information systems
- International business
- Management
- Organisation and management
- Marketing
- Risk management*
- Social impact*
- Strategy and entrepreneurship*
- Taxation

Arts, Design & Architecture

Business School

Engineering

Law & Justice

Medicine & Health

Science

Engineering

- Aerospace engineering
- Bioinformatics
- Biomedical engineering*
- Ceramic engineering
- Chemical engineering
- Civil engineering
- Computer science
- Electrical engineering
- Energy systems*
- Environmental engineering
- Geothermal engineering*
- Industrial engineering
- Manufacturing engineering
- Mechanical engineering
- Mechatronic engineering
- Mining engineering
- Nuclear engineering*
- Petroleum engineering
- Photonic engineering
- Photovoltaic engineering
- Production engineering
- Renewable energy engineering
- Software engineering
- Solar energy engineering
- Spatial information systems
- Surveying
- Telecommunications
- Transport engineering

Law

- Australian legal system
- Criminal law
- Human rights law
- Religion
- Sport and law
- To be eligible to enrol in the full range of courses in Law, students must be enrolled in a Law degree at home.

Medicine

- Anatomy
- Exercise physiology
- Health and exercise science
- Neuroscience
- Pathology
- Pharmacology
- Physiology
- Public health[^]

[^]Students cannot enrol in Doctor of Medicine (3805) courses.

Science

- Anatomy
- Aviation management
- Biochemistry
- Bioinformatics
- Biology
- Biotechnology
- Chemistry
- Climate systems science
- Conservation
- Data science
- Earth science
- Ecology
- Environmental management
- Environmental science
- Evolutionary biology
- Food science and technology
- Genetics
- Geography
- Immunology
- Marine science
- Materials science and engineering
- Mathematics
- Medicinal chemistry
- Metallurgy
- Microbiology
- Molecular and cell biology
- Neurobiology
- Neuroscience

- Nutrition
- Oceanography
- Pathology
- Pharmacology
- Physics
- Physiology
- Psychology
- Quantum mechanics
- Remote sensing
- Solid state physics
- Spatial information systems
- Statistics
- Sustainability
- Synesthetic Biology
- Zoology

*Only available at postgraduate level

Study Abroad

University students and gap year students from anywhere around the world can come to UNSW Sydney through our Study Abroad Program. An official transcript will be issued upon conclusion of your studies at UNSW, and credit transfer back to your home university is a possibility.

unsw.to/studyabroad

| Study Plan | "UNSW Credits" | ECTS | "Number of Courses" | Start Date | End Date | CRICOS Code |
|--|----------------|------|---------------------|------------|----------|-------------|
| Semester-long Programs | | | | | | |
| Tailored Term 1 (Summer Term + Term 1) | 24 | 30 | 4 | Jan | May | 099644A |
| Term 1 | 18 | 22.5 | 3 | Feb | May | 097354E |
| Term 1 + Term 2 | 36 | 45 | 6 | Feb | Aug | 097359M |
| Tailored Term 3 (Winter Term + Term 3) | 24 | 30 | 4 | Aug | Dec | 099644A |
| Term 3 | 18 | 22.5 | 3 | Sep | Dec | 097354E |
| Term 3 + Summer Term | 24 | 30 | 4 | Sep | Feb 2027 | 099644A |
| Term 3 + Term 1 | 36 | 45 | 6 | Sep | May 2027 | 097359M |
| Year-long Programs | | | | | | |
| Term 1 + Term 2 + Term 3 | 48 | 60 | 8 | Feb | Dec | 097358A |
| Tailored Term 3 + Tailored Term 1 | 48 | 60 | 8 | Aug | May 2027 | 097358A |
| Term 3 + Term 1 + Term 2 | 48 | 60 | 8 | Sep | Aug 2027 | 097358A |

What you can study

You can study almost any course at UNSW Sydney as long as you have the required background knowledge. You may also be able to take Practice of Work to gain industry experience.

A complete list of courses can be found in the UNSW Handbook.
handbook.unsw.edu.au

We recommend you check our Timetable to ensure that your chosen courses are available. timetable.unsw.edu.au

Use our Course Outline Finder to find outlines/syllabi for courses you are interested in and check equivalency with your home university unsw.edu.au/course-outlines.

Enrolment is subject to course availability and your academic background. It is important to be flexible with your course choices as some fill up quickly or may not be offered in a particular term.



How to apply

Step 1. Create a profile
unsw.openacademies.com/registerforstudyabroad

Step 2. Start application
You will be guided through the application by the system. Ensure your application name matches how it appears on your passport.

Step 3. Choose your courses
Enter the courses that you wish to study while with UNSW, they will be sent for prerequisite approval by UNSW when you submit your application. Check that the courses you wish to study are offered in the term(s) you will be at UNSW and will be approved by your home institution for transfer of credit.

Step 4. Submit your application
Submit your application by the deadline. Make sure to submit clear digital copies of the following documents as a pdf with your application:

1. Your most recent official academic transcript (with English translation)
2. The ID page of your passport
3. Proof of English language Proficiency if required.

Step 5. We will send you a letter of offer
We will notify you of the outcome of your application via email. If your application is successful, you will receive an Offer Letter.

Step 6. Accept offer
You need to accept your offer by the deadline.

Step 7. Housing
Start to consider your housing options.

Step 8. Purchase your OSHC
Your Offer Letter contains advice about purchasing Overseas Student Health Cover (OSHC).

Step 9. Receive eCoE and apply for visa
You will receive an electronic Confirmation of Enrolment (eCoE) after you accept your offer and purchase OSHC. This is required for your visa application.

Step 10. Book flights
Ensure that you will arrive in time for your orientation program.

Other Pathways
The above steps relate to direct applicants to the UNSW Study Abroad Program. There are two further pathways which are commonly used by UNSW Study Abroad students:

- Your home university may have an existing agreement with UNSW through which they can nominate you via a process that resembles the Exchange application process detailed below.
- You could consider engaging a third-party-provider service with whom UNSW has an agreement who provide full-service support through: the application process, flight arrangements, housing arrangements, transfer of credit, etc (additional costs apply).

Study Abroad
UNSW Sydney
E: studyabroad@unsw.edu.au
W: unsw.to/studyabroad

Entry requirements
A cumulative grade point average of 2.7 on a 4.0 grading scale, ECTS C grade or equivalent standard from your home institution.

English requirements
If English is not your first language, you must provide evidence that your English language ability meets our requirements. For further information about UNSW's English language requirements see: unsw.edu.au/study/how-to-apply/english-language-requirements#studyabroadexchange.

Tuition Fees

| Standard term fee (18 units of credit) | Tailored term fee (24 units of credit) |
|---|---|
| \$A10,890 | \$A14,520 |

Overseas Student Health Cover (OSHC)
Students are required to purchase their own OSHC for the duration of their visa (except holders of Norwegian and Belgium passports).

Details on how to purchase your OSHC will be provided on your acceptance.



University students from partner universities can come to UNSW Sydney through our Student Exchange Program. An official transcript will be issued upon conclusion of your studies at UNSW, and credit will be transferred back to your home institution.

Check if your university is one of our partners at students.unsw.edu.au/partners

| Study Plan | "UNSW Credits" | ECTS | "Number of Courses" | Start Date | End Date | CRICOS Code |
|--|----------------|------|---------------------|------------|----------|-------------|
| Semester-long Programs | | | | | | |
| Tailored Term 1 (Summer Term + Term 1) | 24 | 30 | 4 | Jan | May | 000732G |
| Term 1 | 18 | 22.5 | 3 | Feb | May | 097364C |
| Term 1 + Term 2 | 24 | 30 | 4 | Feb | Aug | 097370E |
| Tailored Term 3 (Winter Term + Term 3) | 24 | 30 | 4 | Aug | Dec | 000732G |
| Term 3 | 18 | 22.5 | 3 | Sep | Dec | 097364C |
| Term 3 + Summer Term | 24 | 30 | 4 | Sep | Feb 2027 | 000732G |
| Term 3 + Term 1 | 36 | 45 | 6 | Sep | May 2027 | 097370E |
| Year-long Programs | | | | | | |
| Term 1 + Term 2 + Term 3 | 48 | 60 | 8 | Feb | Dec | 027951G |
| Tailored Term 3 + Tailored Term 1 | 48 | 60 | 8 | Aug | May 2027 | 027951G |
| Term 3 + Term 1 + Term 2 | 48 | 60 | 8 | Sep | Aug 2027 | 027951G |

What you can study

You can study almost any course at UNSW Sydney as long as you have the required background knowledge and approval from your home university.

A complete list of courses can be found in the UNSW Handbook. handbook.unsw.edu.au

We recommend you check our Timetable to ensure that your chosen courses are available. timetable.unsw.edu.au

Use our Course Outline Finder to find outlines/syllabi for courses you are interested in and check equivalency with your home university unsw.edu.au/course-outlines

Enrolment is subject to course availability and your academic background. It is important to be flexible with your course choice as some fill up quickly or may not be offered in a particular term.





Entry requirements

You must be nominated by the Exchange Office at your home university. You should have the equivalent of a credit average or 3.0 GPA.

English requirements

If English is not your first language, you must provide evidence that your English language ability meets our requirements. For further information about UNSW's English language requirement policy, visit unsw.edu.au/study/how-to-apply/english-language-requirements.

Tuition Fees

You pay your usual tuition fees to your home university, not UNSW.

Overseas Student Health Cover (OSHC)

Students are required to have OSHC for the duration of their student visa (except holders of Norwegian, Swedish and Belgian passports). Details on how to purchase OSHC are provided on acceptance.



How to apply

Step 1. Nomination

You need to be nominated by your home university, and they will choose one of our study plans for you.

Step 2. Start your application

After being nominated, an email with application instructions will be sent to you. Ensure that the name on your application is the same as on your passport.

Step 3. Choose your courses

Enter the courses that you wish to study while with UNSW, they will be sent for prerequisite approval by UNSW when you submit your application.

Check that the courses you wish to study are offered in the term you will be at UNSW and will be approved by your home institution.

Step 4. Submit your application

Submit your application by the deadline. Make sure to submit the following documents as a pdf with your application:

1. Your most recent official academic transcript (with English translation)
2. The ID page of your passport
3. Proof of English language Proficiency if required

Step 5. We will send you a letter of offer

We will notify you of the outcome of your application via email. If your application is successful, you will receive an offer.

Step 6. Accept your offer

You need to accept your offer by the deadline.

Step 7. Housing

Start to consider your housing options.

Step 8. Purchase your OSHC

You will receive details about purchasing OSHC with your offer.

Step 9. Receive eCoE and apply for visa

You will receive an electronic Confirmation of Enrolment (eCoE) after you accept your offer and purchase OSHC. This is required for your visa application.

Step 10. Book flights

Ensure that you will arrive in time for your orientation program.

Student Exchange

UNSW Sydney
E: exchange@unsw.edu.au
W: unsw.to/studyabroad



Study Abroad Research Practicum

University students from anywhere in the world can come to UNSW through our Study Abroad Research Practicum for short-term research.

Study plans

The Practicum Program offers flexible commencements with 6 recommended start dates throughout the year at the start and mid-point of each Standard Term (Term 1/Term 2/Term 3).

What can you study?

You will create a research plan with your supervisor and home university before you arrive at UNSW. Use the resources available on our website to find a supervisor that does research aligning with your own. UNSW has many research areas and strengths, you're only limited by your ability to find a supervisor who is willing to support your research.

Some of UNSW's research focus includes, but is not limited to, the following areas:

- Biomedical Sciences
- Contemporary Humanities and Creative Arts
- Defence and Security
- Fundamental and Enabling Sciences
- ICT, Robotics and Devices
- Law, Business and Economics
- Next Generation Materials and Technologies
- Social Policy, Government and Health Policy
- Water, Climate, Environment and Sustainability

UNSW support

UNSW is proud to have world-class research staff and the latest technology to support your research. You will have access to all the necessary facilities to support your research, including receiving a workspace alongside the faculty's doctoral researchers, access to a campus amenities, libraries, and liability insurance for UNSW premises.



How to apply

Step 1. Check you are eligible

Visiting our program webpage to ensure you meet the UNSW Entry and English Language requirements.

Step 2. Find a supervisor

Contact UNSW academics to find a suitable supervisor and negotiate start and finish dates for your practicum.

Step 3. Nomination

Your proposed UNSW supervisor will approve your nomination to apply for entry into the Research Practicum program. Nominations should be submitted 4-6 months in advance of your proposed start date.

Step 4. Start application

The Study Abroad Research Practicum team will email you with details on how to fill in an online application.

Step 5. Submit application

Prepare the following PDF documents to submit with your application:

1. Your most recent official academic transcript (with English translation)
2. The ID page of your passport
3. Proof of English language Proficiency

Step 6. Receive offer

If your application is successful, you will receive an offer letter by email.

Step 7. Accept offer

Accept your offer online and pay your administration fee.

Step 8. Housing

Consider your housing options and start applying if you are looking for on-campus accommodation.

Step 9. Receive CoE and apply for visa

You will receive a Confirmation of Enrolment (CoE) after you accept your offer. This is required for your visa application.

Step 10. Book flights

Ensure that you will arrive in time for the start of your Research Practicum. We recommend arriving two weeks earlier if you are finding your own accommodation.

Step 11. Getting ready for your Practicum

Further information on enrolment, getting ready for arrival and orientation details will be emailed to you in the lead up to the start of your Practicum.

Entry Requirements

A cumulative grade point average of 3.0 on a 4.0 grading scale – or equivalent standard from your home institution.

You also need to find an academic at UNSW who agrees to supervise your research.

English requirements

If English is not your first language, you must provide evidence that your English language ability meets our requirements. For further information about UNSW's English language requirements see: unsw.edu.au/study/how-to-apply/english-language-requirements.

Overseas Student Health Cover (OSHC)

Students are required to have OSHC for the duration of their student visa (except holders of Norwegian and Belgian passports). Details on how to purchase OSHC are provided on your acceptance.



Study Abroad Research Practicum

UNSW Sydney
E: practicum@unsw.edu.au
W: unsw.to/studyabroad



Still curious?

Contact us

Exchange

E: exchange@unsw.edu.au
W: unsw.to/studyabroad

Study Abroad

E: studyabroad@unsw.edu.au
W: unsw.to/studyabroad

Study Abroad Research Practicum

E: practicum@unsw.edu.au
W: unsw.to/studyabroad

Social media

[f](#) [X](#) [v](#) [@](#) [in](#) @UNSW

[WeChat ID: UNSW官微](#)

Applying to UNSW

Handbook

handbook.unsw.edu.au

Course Outlines

unsw.edu.au/course-outlines

Timetable

timetable.unsw.edu.au

English Language Requirements

unsw.to/english-exchange-students

Student services

Accommodation

accommodation.unsw.edu.au

Off Campus Accommodation

student.unsw.edu.au/accommodation

Support & Development

student.unsw.edu.au/support

Arc, UNSW's student organisation

arc.unsw.edu.au

Government resources

Student visas

immi.homeaffairs.gov.au

Australian diplomatic missions

dfat.gov.au/mission

