



Regional Educational Outreach

Years 11 and 12



2024

I'm pleased to share with you UNSW's 2024 educational outreach program for students attending our Gateway partner high schools.

At UNSW, we are committed to student equity and improving educational outcomes for students underrepresented in higher education. Core to UNSW's strategy is the objective of transforming our undergraduate population so that it is inclusive of all students regardless of the school they attended or area they grew up in. Our goal is that by 2027, 25% of domestic undergraduate students commencing at UNSW will be from underrepresented backgrounds.

To ensure our community is representative of the broader population, we take a holistic approach to supporting students, from pre-tertiary outreach, to academic, financial and well-being support as they transition to UNSW, through to internship and careers support for graduation and beyond.

Our educational outreach program provides students with academic enrichment opportunities that enhance school-based learning and increase preparedness for and success in higher education. We have brought together a unique set of curriculum-linked learning experiences with an embedded focus on self-efficacy, identifying learning strengths and values-led career choices.

Through our program, we seek to support and extend students' interest in their own learning and focus on higher-order thinking, metacognition, critical analysis and literacy - all essential factors for post-school success. We guide students to develop their learning goals and participate in experiences that are interactive, experiential, and explore a range of contexts that are unique to UNSW. We also provide an equitable pathway to UNSW through the Gateway Admission Pathway and Program.

The following provides a snapshot of our educational outreach program in 2024. We look forward to connecting with you and your students.

Mary Teague

Director, Access, Equity & Inclusion
Division of Equity Diversity & Inclusion
UNSW Sydney



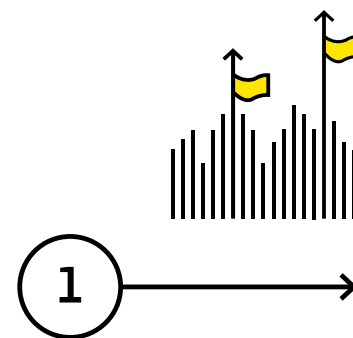
Acknowledgment of Country

We would like to acknowledge the Bedegal (Kensington campus), Gadigal (City and Art & Design Campuses) and Ngunnawal people (Australian Defence Force Academy in Canberra) who are the traditional custodians of the lands where each campus of UNSW is located.

Contents

Student access and success	01
Theory of change	03
University Ambassadors	05
Student journey	07
The Gateway Admission Pathway and Program	09
Year 11 Gateway Program	11
Year 12 Gateway Program	13
Gateway Admission Pathway	15
Timeline and key dates	17
Gateway partner schools	19

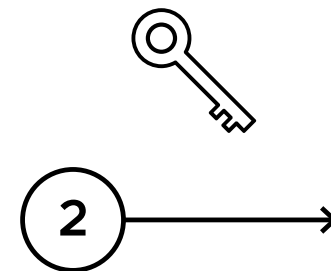
Student access and success



Pre-access



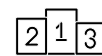
Year 11 & 12
Gateway
educational
outreach
programs



Access



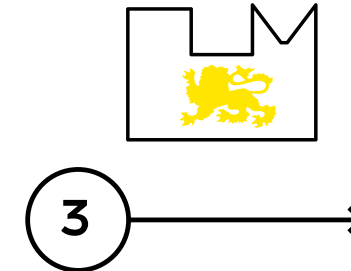
Gateway
Admission
Pathway



Supported
places in UNSW
Global and Prep
Programs



Equity and
Accommodation
Scholarships



Transition



Enrolment
assistance



Early orientation



Financial
awards to
support
transition to uni



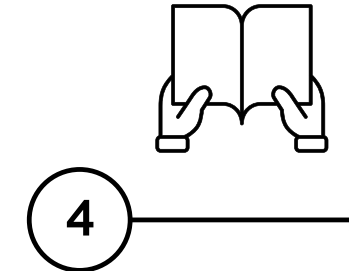
Peer mentoring



Wellbeing
support



Supported places
in bridging
programs



Participation



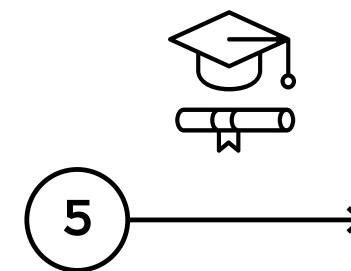
Faculty-based
academic
mentoring and
guidance



Academic skill
development
and support



Priority
access to paid
employment
as a UNSW
Ambassador



Success and transition out



Graduate
recruitment
support and
development
opportunities



Priority access
to career
development
and industry
partnership
programs



Targeted career
pathway and
planning

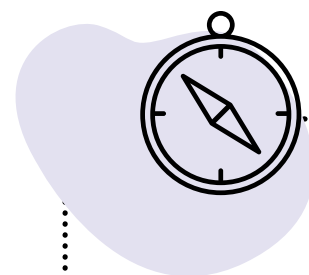
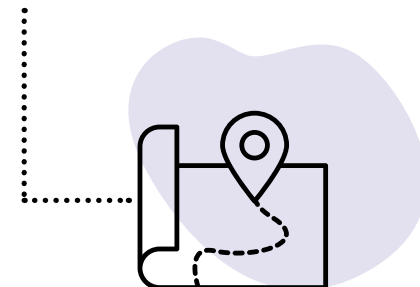
UNSW takes a holistic approach in supporting students who are underrepresented in higher education to access and succeed at university

Theory of change

The UNSW Gateway Program falls within the pre-access and access phase of the student lifecycle and is underpinned by a tailored theory of change. This theory of change articulates the impact we intend to have and how we aim to have that impact.

THE MAP

Improving student's understanding of university to aid informed decision-making about post-school options

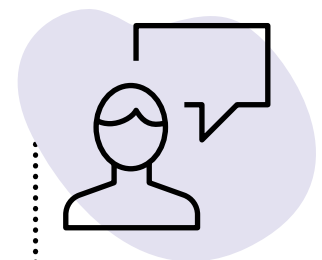
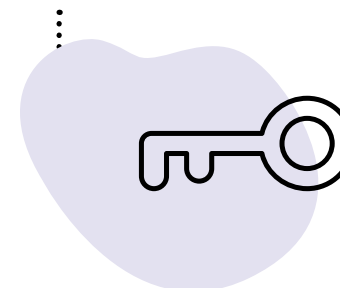


THE COMPASS

Building student's learner identity and confidence to successfully navigate their educational journey.

THE KEY

Enhancing students' academic attainment and reducing barriers to entry for expanded post-school study options.



THE GUIDE

Providing students with trusted information from current university students from equity backgrounds.

Students Build Educational Capacity

- Students develop their understanding of future possibilities and begin to map out their path from school to tertiary education and beyond
- Students develop an understanding of how to use their learning strengths to navigate their education journey
- Students build the skills to enhance their academic attainment

Students Apply

- Students apply their knowledge and skills to achieve academically
- Students make informed decisions about their education futures which suit their strengths, interests and goals
- Students apply through the Gateway Admission Pathway and successfully transition to university

Impact

- Students from underrepresented backgrounds have increased access to UNSW and are set up to succeed

University Ambassadors

Our program is co-facilitated by current UNSW students, most of whom have come through the Gateway Admission Pathway. University Ambassadors serve as powerful role models who demonstrate the opportunities a university education can bring.

Student Story

Saoirse

Kingscliff, NSW

Bachelor of Arts/Law

I grew up on the border of Queensland and New South Wales and went to Kingscliff High School. As the youngest in a family of five children, I was lucky to have my siblings as role models.

Over the years all my brothers and sisters had left home and dispersed to different universities to study health-related courses. I knew uni would also be a stepping stone for me when I finished High School in 2021, but I was more creative and very passionate about the environment and climate change.

My school was right next to a TAFE campus, so a lot of the career choices were naturally TAFE-related. Being from a quiet regional town meant the closest uni was a small one over the border in Queensland, so we didn't have a lot of exposure to it whereas if you're in Sydney you drive past universities all the time.

I always wanted to go to the city and had my heart set on Sydney, whatever it took.

I thought I wanted to study law, but I was also passionate about the arts and humanities. The UNSW BArts/Law degree was top of my list. I was particularly excited about the environmental humanities major, which is unique in arts at UNSW. The degree combined everything I was good at, and passionate about, which was very important to me and the main reason I chose UNSW.

I was set on going to the city but I was also worried, because I knew I wouldn't get the very high marks required for any of the law degrees at universities in Sydney. My backup plan was to transfer into that degree later on, but I really wanted to get the first step in. So I looked up early entry schemes.

I found the UNSW Gateway Admission Pathway online, and realised that my High School was a Gateway Partner School, which allowed me to apply. I was late to the party, so I didn't do the Spring or Winter Program.

The Gateway Admission Pathway lowered the ATAR I needed to get into Law and recognised what I was doing outside the classroom through my written personal statement. In Year 11 and 12 I had put a lot of energy into extracurriculars related to my environmental passions - and UNSW recognised this.

I used the Nail It app to write my personal statement and got my sister to check it.

When I found out I'd got an early conditional offer at UNSW for the BArts/Law I was really happy. It meant there was a chance I could go to uni in Sydney and do what I wanted to do. But I still needed an ATAR of 85, and I didn't know if it was achievable. In the end I got in.

I received \$1,000 to support my transition to UNSW which was helpful. My arts major is in Environmental Humanities, with a minor in Creative Writing. I'm now in my second year, and I recently received an email saying I had \$500 to spend on textbooks at the bookshop and the opportunity to do a paid work experience with one of the law firms, because I was a Gateway student, which was amazing. I thought that Gateway was only there to help me get into uni, but they are still supporting me and will for the whole of my studies.

I'm living on campus in college, and that has been really great for making friends. I'm also working two jobs, waitressing at the Lounge at UNSW and as a Gateway Ambassador.

I chose to become an Ambassador because I wanted to help other ambitious students to find a path to uni. I'm so lucky to have had my siblings to guide me. I'd love to go back and tell students at my old school about UNSW, because I had to find that info myself. I want to help UNSW broaden the scope of who they reach, because so many more people deserve it.

Gateway exists to recognise you and support you. UNSW is a very exciting, safe and supportive environment. It's a great opportunity and if you're eligible you deserve to take it.

Student journey

Year 11 Gateway Program

The Year 11 Gateway Program is a two-day on-campus intensive for students who can travel to campus, to explore a range of UNSW degrees through cross-faculty experiences, academic skills workshops, and opportunities to be immersed in the vibrant UNSW community. This on-campus experience is supplemented by an online Gateway Admission Pathway information session and access to a suite of academically enriching online resources.

Year 11/12 Regional Roadshows

UNSW staff and University Ambassadors will be visiting schools in select regions across NSW to conduct workshops with students. These interactive workshops invite students to self-reflect and express themselves in relation to their future hopes, and highlights the opportunities offered by the Year 11 and 12 Gateway Programs.

Year 12 Gateway Program

A one-week online program for Year 12 students to prepare for the HSC with subject-specific masterclasses, practice tests, personalised mentoring, and academic skill-enhancing workshops. Students can access exclusive follow-up academic support and tutoring in the lead-up to exams, as well as support in submitting a Gateway Admission Pathway application to secure their place at UNSW. Some students who have interest in moving to Sydney for university, will be supported to visit campus as part of a Residential Program. This program coincides with the on-campus days, which is open to all students. Students will participate in interactive faculty experiences and have their burning questions answered by University Ambassadors.

Access to Uni

Gateway Admission Pathway

An alternative entry pathway to UNSW for Year 12 students which considers more than just the ATAR. Successful students will receive either early entry to UNSW or a significantly lower ATAR entry requirement for their chosen degree.

Support at Uni

Scholarships and Awards, Start@UNSW Program, Peer and Academic Support

Students who come to UNSW through the Gateway Admission Pathway are prioritised for UNSW Equity and Accommodation scholarships and access to the Start@UNSW program to support their transition to university. They also have access to free bridging courses, peer mentoring and additional academic support for some subjects.



The Gateway Admission Pathway and Program

Enhancing educational outcomes for students who are underrepresented in higher education.

The UNSW Gateway Admission Pathway and Program (GAPP) combines a unique set of learning experiences with an early admission pathway to maximise students' post-school success and ensure equitable access to UNSW.

Eligibility

The GAPP is for students in Years 11 and 12 who:

- Attend one of our Gateway schools, or
- Live in a low-socioeconomic area based on IRSAD¹ or IEO² indexes of SEIFA³

¹ Index of Relative Socio-economic Advantage and Disadvantage

² Index of Education and Occupation

³ Socio-Economic Indexes for Areas





Year 11 Gateway Program

Regional roadshow

During Term 1, UNSW staff and University Ambassadors will be visiting schools in select regions across NSW to conduct a 60-minute workshop with students in Year 11.

This interactive workshop invites students to self-reflect and express themselves in relation to their future hopes, and highlights the opportunities offered by the Year 11 Gateway Program online resources.

Year 11 workshop – a 60-minute workshop

> When: Term 1, Weeks 8 – 11

> Where: in-schools across select regions in NSW

Students will:

- *Reflect* on their learning strengths and personal values
- *Understand* the Gateway Admission Pathway and how participation in Gateway Programs can offer academic enrichment and personal development opportunities to boost success in Year 11 and 12
- *Learn* from current UNSW students from regional areas about their experiences completing the HSC and navigating post-school options

Online

The online components of this Program are for Year 11 students on an ATAR pathway. During the Program, students discover the different degrees available at UNSW, understand the Gateway Admission Pathway and Program opportunities and are supported to start planning their written personal statement as part of their application for an early offer to UNSW in 2026.

Online workshop – a 60-minute workshop

> When: Term 2, Week 9, Wednesday 26 June, 5:00pm

> Where: Online

Online resources through OpenLearning

> When: Resources available from Monday 1 July

> Where: Online

Students will:

- *Gain* access to detailed information showcasing the range of degree options at UNSW
- *Be supported* to write a compelling personal statement and learn key information about applying through the UNSW Gateway Admission Pathway for an early offer
- *Enhance* their study with access to the InspirationED HSC4ME app to further support their HSC preparation

On Campus

The on-campus days are open to any Year 11 students who are able to make their own way to UNSW campus. These days encourage students to ambitiously consider the contribution they want to make to society in the future. Students explore UNSW faculties and facilities through a problem-based lens, where they select faculty teams (Business, Science, and Engineering; or Arts, Design & Architecture, Law & Justice, and Medicine & Health) to learn from and collaborate with to solve real-world-problems related to the Sustainable Development Goals.

Students will have an opportunity to engage in a UNSW-developed VR game, where they will make their mark on the virtual world of UNSW through planting and growing a unique habitat for creatures on campus.

Students also engage in capacity building workshops and experiences to set themselves up for success in their HSC and beyond.

On-campus days

> When: Monday 8 and Tuesday 9 July

> Where: UNSW Kensington campus

Students will:

- *Discover* campus and hear about life at UNSW on a guided tour led by current university students
- *Explore* UNSW faculties and degrees through an immersive cross-faculty workshop addressing real-world challenges
- *Enhance* their critical and creative thinking skills in workshops that prepare students for Year 12 and beyond
- *Connect* with current university students to hear first-hand about the transition from high school to university.





Year 12 Gateway Program

Regional roadshow

During Term 1, UNSW staff and University Ambassadors will be visiting schools in select regions across NSW to conduct 60-minute workshops with students in Year 12.

Focusing on persuasive writing skills, the workshop invites students to express themselves with confidence and clarity, and highlights the opportunities offered by the Year 12 Gateway Program as well as the Year 12 Regional Residential Program.

Year 12 workshop – a 60-minute workshop

> When: Term 1, Weeks 8 – 11

> Where: in-schools across select regions in NSW

Students will:

- *Develop* strategies for crafting personal narratives
- *Understand* the UNSW Gateway Admission Pathway early offers and how the Year 12 Gateway Program provides key academic enrichment and support to navigate the HSC and beyond
- *Learn* from current university students about how they navigated their transition from regional NSW to UNSW

Online

During the online program, students will prepare for the HSC through subject-specific exam practice and workshops led by experienced HSC teachers and markers. Students will also be supported to write their personal statement, a requirement for their Gateway Admission Pathway application.

Online workshop – a 60-minute workshop

> When: Term 2, Week 9, Monday 24 June, 5:00pm

> Where: Online

Students will:

- *Understand* the UNSW Gateway Admission Pathway early offers and how the Gateway Program can offer support with navigating the application process

Online program

> When: Monday 1 – Thursday 4 July 2024

> Where: Online

Students will:

- *Access* subject-specific HSC seminars run by HSC markers to hone their content knowledge and refine their exams skills
- *Benefit* from practice papers and individualised written exam feedback to support their HSC preparation, and gain access to the InspirationED HSC4ME app for further academic support

- *Gain* the opportunity to receive 8 hours of free online tutoring in a subject of choice through Cluey Learning
- *Be inspired* by current students and academics with their questions answered in faculty Q&As, to support making informed decisions about future degree choices
- *Connect* with current UNSW students to learn about what university is really like
- *Be supported* by specialised guidance on the application process for early offers to UNSW and access resources for writing an effective personal statement
- *Learn* about the many alternate pathways and support systems on offer at UNSW

On Campus

The on-campus days are open to any Year 12 students who are able to make their own way to the UNSW campus or are accepted into the Residential Program. These days provide students an opportunity to explore the UNSW campus and participate in university life through interaction with current students, societies and faculties. On the first day, they engage in a variety of faculty specific immersive experiences, with the opportunity to affirm their interest in degrees and/or areas of study available at UNSW. The second day offers students an experience that authentically reflects the daily life of university students and provides opportunities to independently explore UNSW through building a unique timetable and independently navigating campus while participating in degree aligned tutorials.

On-campus days

> When: Wednesday 10 and Thursday 11 July

> Where: UNSW Kensington campus

Students will:

- *Participate* in immersive faculty experiences to explore the range of degrees, and post-study careers available to UNSW students
- *Discover* the UNSW campus and hear about student life through guided tours led by current students
- *Connect* with current students, academics, and university support staff to have all their questions about degree options, support services, and daily life at UNSW answered
- *Build* a personalised timetable, attend lectures and tutorials to receive an authentic university experience

Residential Program

Regional students in Year 12 are invited to attend a four-day residential program to explore UNSW's bustling Kensington campus in the heart of Sydney and spend three nights at accommodation near campus.

Students must be in Year 12, on an ATAR pathway, live in a regional area and have an interest in pursuing university in Sydney. Students will need to submit an application, answering 2-3 questions about their passions, goals and strengths. Applications will open in March and close at the end of April.

Residential Program

> When: Tuesday 9 – Friday 12 July

> Where: UNSW Kensington Campus

Students will:

- *Discover* the UNSW Kensington campus and college accommodation options with guided tours
- *Connect* with faculty representatives and current students who moved from regional areas to study a range of degrees at UNSW
- *Participate* in two days of on-campus programming as part of the Year 12 Gateway Program
- *Connect* with other highly motivated Year 12 students
- *Discover* Sydney and the local area

UNSW Open Day

UNSW's final large-scale event before the HSC

> When: Saturday 6 September

> Where: UNSW Kensington Campus and UNSW Paddington

Students will:

- *Gain* detailed advice from academics and current students about their dream degree
- *Learn* about the Gateway Admission Pathway early entry application process
- *Discover* the UNSW campus guided by current UNSW Students
- *Explore* UNSW Accommodation.
- *Attend* lectures and receive advice on student life

Year
11
Gateway
Program

Year
12
Gateway
Program

**Access
to Uni**
Gateway
Admission
Pathway

Gateway Admission Pathway

We know that the ATAR alone is not the only measure of students' academic potential or success at university. The Gateway Admission Pathway is an alternative entry to UNSW for eligible Year 12 students which provides early entry or a significantly lower ATAR entry requirement for a range of degrees.

Who is eligible?

To be eligible for the Gateway Admission Pathway, students must:

- Be an Australian resident
- Be completing an Australian Year 12 qualification in the year of application
- Attend a Gateway school or live in a low-socioeconomic area based on IRSAD and IEO indexes of SEIFA

How does it work?

Students apply through the Gateway portal by submitting a written personal statement that answers three questions about themselves. The applications are assessed based on students' personal statements and Year 11 results. Successful students will receive either an early offer or early conditional offer for their chosen UNSW degree.

What is the difference between an early offer and early conditional offer?

Early offers for a UNSW degree are made in Round 1 and only require a student to complete the HSC and attain an ATAR (regardless of the result).

Early conditional offers require students to complete the HSC and achieve the Gateway Adjusted ATAR for their chosen UNSW degree.

The Gateway Adjusted ATARs provide students with a significantly lower ATAR than the lowest selection rank.

When do applications close and when are offers released?

In 2024, there will be two offer rounds for the Gateway Admission Pathway:

Round 1: early offers and early conditional offers

Applications open - April 2024
Applications close - July 2024
Offers released - September 2024

Round 2: early conditional offers

Applications open - September 2024
Applications close - November 2024
Offers released - December 2024

Firm offers, post ATAR release: December 2024

Please check out our website in early 2024 when specific dates are released.

Ongoing support

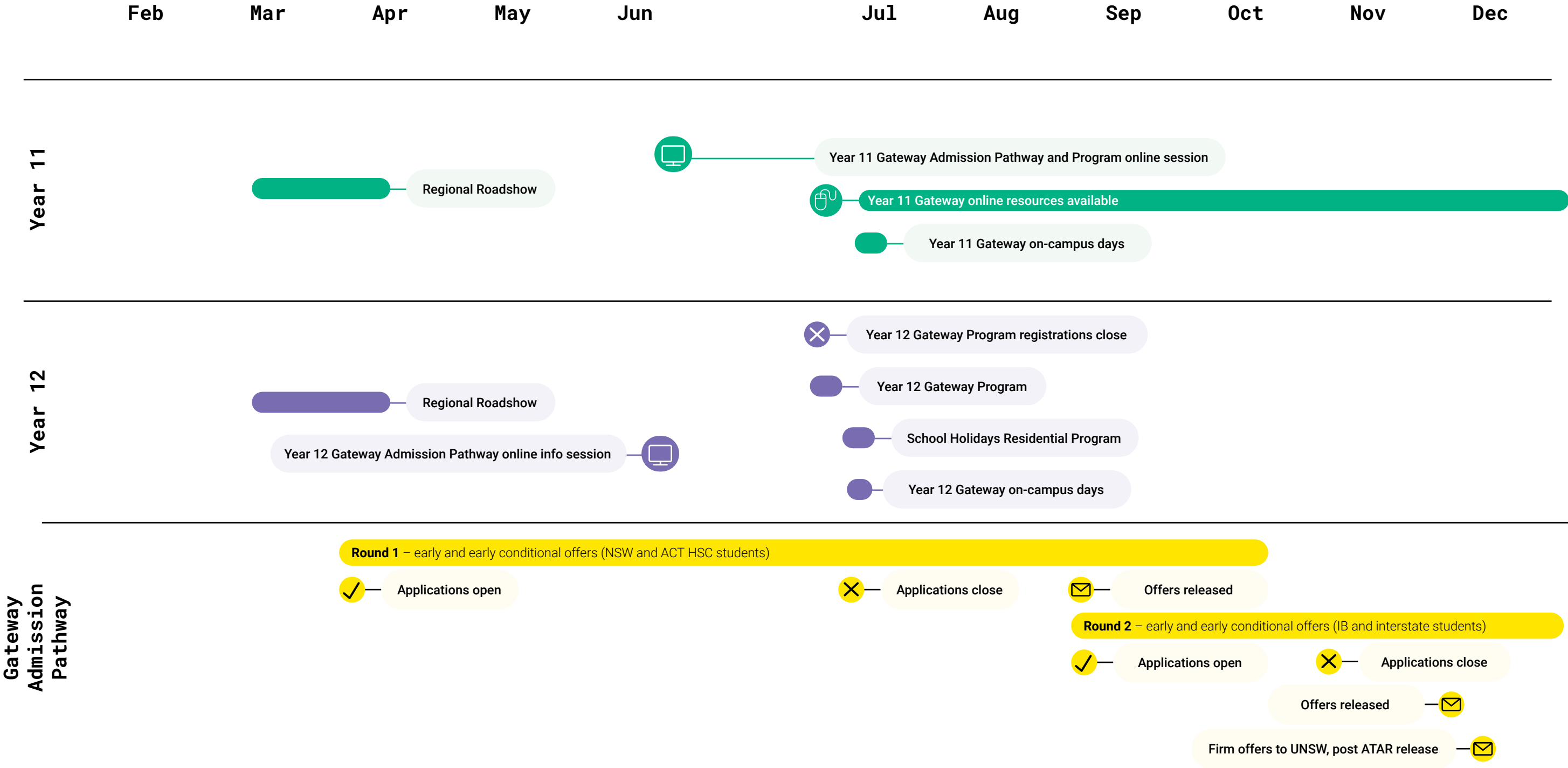
Students who come to UNSW through the Gateway Admission Pathway are prioritised for scholarships and receive exclusive access to ongoing academic and transition support.

Complimentary outreach opportunities at UNSW Sydney

Students can access further opportunities through the UNSW Future Students Team that complement the UNSW Gateway Educational Outreach Programs. Years 10 – 12 can participate in on-campus faculty workshops, campus tours, degree information sessions in-school and online.



Timeline and key dates



Gateway partner schools

Schools on this list are eligible
for the Gateway Admission
Pathway and Program.

A

Airds High School	2560	Bass High School	2197
Ajuga School	2167	Batemans Bay High School	2536
Al Amanah College	2170	Batlow Technology School	2730
Al Sadiq College	2190	Bede Polding College	2756
Al Zahra College	2205	Bega High School	2550
Albion Park High School	2527	Bellfield College	2557
Albury High School	2640	Bellingen High School	2454
Alesco Senior College	2300	Belmont High School	2280
Alstonville High School	2477	Belmore Boys’ High School	2192
Ambarvale High School	2560	Bethel Christian School	2770
Ardlethan Central School	2665	Beverly Hills Girls’ High School	2209
Ariah Park Central School	2665	Billabong High School	2660
Armidale Secondary College	2350	Bingara Central School	2404
Arthur Phillip High School	2150	Binnaway Central School	2395
Ashcroft High School	2168	Birrong Boys’ High School	2143
Ashford Central School	2361	Birrong Girls’ High School	2143
Auburn Girls’ High School	2144	Blacktown Girls’ High School	2148

B

Ballina Coast High School	2478	Blayney High School	2799
Balranald Central School	2715	Blue Hills College	2480
Bankstown Girls’ High School	2200	Boggabilla Central School	2409
Bankstown Senior College	2200	Bomaderry High School	2541
Banora Point High School	2486	Bombala High School	2632
Baradine Central School	2396	Bonalbo Central School	2469
Barellan Central School	2665	Bonnyrigg High School	2177
Barham High School	2732	Boorowa Central School	2586
Barraba Central School	2347	Bossley Park High School	2176
		Bourke High School	2840
		Bowral High School	2576
		Bowraville Central School	2449
		Braidwood Central School	2622

Brewarrina Central School	2839
Brisbane Water Secondary College Woy Woy Campus	2256
Broken Hill High School	2880
Bulahdelah Central School	2423
Bundarra Central School	2359

C

Cabramatta High School	2166
Callaghan College Jesmond Senior Campus	2299
Cambridge Park High School	2747
Camden Haven High School	2443
Camden High School	2570
Campbelltown Performing Arts High School	2560
Canley Vale High School	2166
Canobolas Rural Technology High School	2800
Canowindra High School	2804
Canterbury Boys’ High School	2193
Cardiff High School	2285
Casino Christian School	2470
Casino High School	2470
Casula High School	2170
CathWest Innovation College	2770
Cecil Hills High School	2171
Cessnock High School	2325
Chatham High School	2430
Chester Hill High School	2162
Chifley College Bidwill Campus	2770
Chifley College Senior Campus	2770
Cobar High School	2835
Coffs Harbour High School	2450
Coleambally Central School	2707
Collarenebri Central School	2833
Colo High School	2754
Colyton High School	2760
Condell Park High School	2200
Condobolin High School	2877
Coolah Central School	2843
Coolamon Central School	2701
Coomealla High School	2717
Coonabarabran High School	2357
Coonamble High School	2829
Cootamundra High School	2590
Corowa High School	2646
Corrimal High School	2518
Cowra High School	2794
Cranebrook High School	2749
Crookwell High School	2583

D

Dapto High School	2530
Delany College	2142
Deniliquin High School	2710
Denison College of Secondary Education (Bathurst High Campus)	2795
Denison College of Secondary Education (Kelso High Campus)	2795
Doonside High School	2767
Dorriggo High School	2453
Dubbo College Senior Campus	2830
Dubbo School of Distance Education	2830
Dunedoo Central School	2844
Dungog High School	2420

E

Eagle Vale High School	2558
East Hills Boys’ High School	2213
East Hills Girls’ Technology High School	2213
Eden Marine High School	2551
Elderslie High School	2570
Elizabeth Macarthur High School	2567
Emmaus Catholic College	2178
Emmaville Central School	2371
Erina High School	2250
Erskine Park High School	2759
ET Australia Secondary College	2250
Evans High School	2148
Evans River Community School	2473

F

Fairfield High School	2165
Fairvale High School	2165
Farrer Memorial Agricultural High School	2340
Figtree High School	2525
Finley High School	2713
Five Islands Secondary College	2505
Forbes High School	2871
Francis Greenway High School	2322

G

Georges River College Oatley Senior Campus	2223
Gilgandra High School	2827
Glen Innes High School	2370
Glendale Technology High School	2285
Glenmore Park High School	2745
Gloucester High School	2422

Good Samaritan Catholic College	2168
Goodooga Central School	2838
Gorokan High School	2263
Goulburn High School	2580
Grafton High School	2460
Granville Boys’ High School	2142
Granville South Creative and Performing Arts High School	2161
Great Lakes College Senior Campus	2428
Greystanes High School	2145
Gulargambone Central School	2828
Gulgong High School	2852
Gundagai High School	2722
Gunnedah High School	2380
Guyra Central School	2365

H

Hastings Secondary College (Port Macquarie Campus)	2444
Hastings Secondary College (Westport Campus)	2444
Hawkesbury High School	2756
Hay War Memorial High School	2711
Heathcote High School	2233
Hennessy Catholic College	
Henry Kendall High School	2250
Heritage Christian School	2444
Hillston Central School	2675
Holroyd High School	2145
Holsworthy High School	2173
Holy Spirit Catholic College	2195
Hoxton Park High School	2168
Hunter River High School	2324
Hunter Sports High School	2290
Hunter Trade College	2320

I

Illawarra Sports High School	2506
Ingleburn High School	2565
Inverell High School	2360
Irfan College	2178
Irrawang High School	2324
Ivanhoe Central School	2878

J

J J Cahill Memorial High School	2020
James Busby High School	2168
James Cook Boys’ High School	2217
James Fallon High School	2640
James Meehan High School	2564
Jamison High School	2750

John Edmondson High School	2171
John Therry Catholic College	2560
Junee High School	2663

K

Kanahooka High School	2530
Kandos High School	2848
Karabar High School	2620
Kariong Mountains High School	2250
Keira High School	2519
Kempsey Adventist School	2440
Kempsey High School	2440
Kingscliff High School	2487
Kingsgrove High School	2208
Kingsgrove North High School	2208
Kingswood High School	2747
Kogarah High School	2217
Koorinal High School	2650
Kurri Kurri High School	2327
Kyogle High School	2474

L

La Salle Academy	2790
La Salle Catholic College	2200
Lake Cargelligo Central School	2672
Lake Illawarra High School	2528
Lake Macquarie High School	2284
Lake Munmorah High School	2259
Leeton High School	2705
Leumeah High School	2560
Lightning Ridge Central School	2834
Lisarow High School	2250
Lithgow High School	2790
Liverpool Boys’ High School	2170
Liverpool Girls’ High School	2170
Lockhart Central School	2656
Lurnea High School	2170

M

Macarthur Adventist College	2564
Macintyre High School	2360
Macksville High School	2447
Macleay High School	2463
Maitland Grossmann High School	2323
Maitland High School	2323
Manilla Central School	2346
Manning Valley Anglican College	2430
Marian Catholic College (Griffith)	2680
Maronite College of the Holy Family (Parramatta)	2150
Marsden High School	2114

Mary MacKillop Catholic College	2176
Matrville Sports High School	2036
McCarthy Catholic College	2340
Medowie Christian School	2318
Melville High School	2440
Mendooran Central School	2842
Menindee Central School	2879
Merriwa Central School	2329
Merrylands High School	2160
Miller High School	2168
Mitchell High School	2148
Molong Central School	2866
Monaro High School	2630
Moorebank High School	2170
Moorefield Girls' High School	2217
Moree Secondary College (Albert St Campus)	2400
Morisset High School	2264
Moruya High School	2537
Moss Vale High School	2577
Mount Annan High School	2567
Mount Austin High School	2650
Mount View High School	2325
Mountain View Adventist College	2767
Mountains Christian College	2785
Mudgee High School	2850
Mulwaree High School	2580
Mungindi Central School	2406
Murray High School	2641
Murrumbidgee Regional High School	2680
Murrumburrah High School	2587
Murwillumbah High School	2484
Muswellbrook High School	2333

N

Nambucca Heads High School	2448
Narara Valley High School	2250
Narooma High School	2546
Narrabri High School	2390
Narrandera High School	2700
Narromine High School	2821
Nepean Creative and Performing Arts High School	2750
Newman Senior Technical College	2444
Nimbin Central School	2480
Northlakes High School	2262
Northmead Creative and Performing Arts High School	2152
Nowra High School	2541
Nyngan High School	2825

O

Oak Flats High School	2529
Oaklands Central School	2646
Oberon High School	2787
OneSchool Global NSW	2117
OneSchool Global NSW - Albury	2641
OneSchool Global NSW - Armidale	2350
OneSchool Global NSW - Condobolin	2877
OneSchool Global NSW - Goulburn	2580
OneSchool Global NSW - Illawarra	2508
OneSchool Global NSW - Leeton	2705
OneSchool Global NSW - Maitland	2323
OneSchool Global NSW - Mount Victoria	2786
OneSchool Global NSW - Orange	2800
OneSchool Global NSW - Wagga Wagga	2650
Oran Park High School	2570
Orange High School	2800
Orara High School	2450
Oxley High School	2340

P

Pacific Coast Christian School	2486
Pacific Valley Christian School	2463
Pal Buddhist School	2166
Parkes Christian School	2870
Parkes High School	2870
Patrician Brothers' College (Fairfield)	2165
Patrician Brothers' College Blacktown	2148
Peak Hill Central School	2869
Peel High School	2340
Pendle Hill High School	2145
Picnic Point High School	2213
Picton High School	2571
Plumpton High School	2761
Portland Central School	2847
Prairiewood High School	2176
Punchbowl Boys' High School	2196

Q

Quakers Hill High School	2763
Queanbeyan High School	2620
Quirindi High School	2343

R

Red Bend Catholic College	2871
Richmond High School	2753
Riverstone High School	2765
Robert Townson High School	2566
Rooty Hill High School	2766
Rutherford Technology High School	2320

S

Salamah College	2162
Sarah Redfern High School	2566
Scone High School	2337
Sefton High School	2162
Seven Hills High School	2147
Shoalhaven High School	2541
Singleton High School	2330
Sir Joseph Banks High School	2212
South Grafton High School	2460
South Sydney High School	2035
Southern Cross School of Distance Education	2478
St Agnes Catholic High School	2766
St Andrew's Christian School	2460
St Bishoy Coptic Orthodox College	2770
St Brigid's Catholic College	2259
St Catherine's Catholic College	2330
St Clair High School	2759
St Clare's Catholic High School	2761
St Johns Park High School	2176
St Joseph's College (Lochinvar)	2321
St Joseph's High School (Aberdeen)	2336
St Mary and St Mina's Coptic Orthodox College	2216
St Mary's Catholic College (Casino)	2470
St Mary's College (Gunnedah)	2380
St Narsai Assyrian Christian College	2175
St Paul's College (West Kempsey)	2440
St Raphael's Catholic School	2794
Strathfield South High School	2136
Swansea High School	2281

T

Tamworth High School	2340
Taree Christian College	2430
Taree High School	2430
Temora High School	2666
Tenterfield High School	2372
The Henry Lawson High School	2810
The Hills Sports High School	2147
The Rivers Secondary College (Kadina High Campus)	2480
The Rivers Secondary College (Lismore High Campus)	2480

The Rivers Secondary College (Richmond River High Campus)	2480
The Rock Central School	2655
Thomas Reddall High School	2560
Tomaree High School	2317
Tooleybuc Central School	2736
Toormina High School	2452
Toronto High School	2283
Tottenham Central School	2873
Trangie Central School	2823
Trinity Catholic College (Auburn)	2144
Trundle Central School	2875
Tuggerah Lakes Secondary College The Entrance Campus	2261
Tullamore Central School	2874
Tullibigeal Central School	2669
Tumbarumba High School	2653
Tumut High School	2720
Tweed River High School	2486

U

Ulladulla High School	2539
Ungarie Central School	2669
Uralla Central School	2358

V

Verity Christian College	2680
Vincentia High School	2540

W

Wadalba Community School	2259
Wagga Wagga High School	2650
Walcha Central School	2354
Walgett Community College (High School)	2832
Warialda High School	2402
Warilla High School	2528
Warrawong High School	2502
Warren Central School	2824
Wauchope High School	2446
WAYS Secondary	2026
Wee Waa High School	2388
Wellington High School	2820
West Wallsend High School	2286
West Wyalong High School	2671
Westfields Sports High School	2165
Wilcannia Central School	2836
Wiley Park Girls' High School	2196
Willyama High School	2880
Windsor High School	2756
Wingham High School	2429

Wollumbin High School	2484
Woodenbong Central School	2476
Woolgoolga High School	2456
Wyndham College	2763
Wyong High School	2259

X

Xavier College (Llandilo)	2747
---------------------------	------

Y

Yass High School	2582
Yeoval Central School	2868
Young High School	2594



gateway.unsw.edu.au
unswgateway@unsw.edu.au

CRICOS 00098G