

Red Link



Vision: inclusive, safe and connected communities where all people including those most vulnerable can participate and are welcome, and reach their full potential.

Place based local solutions

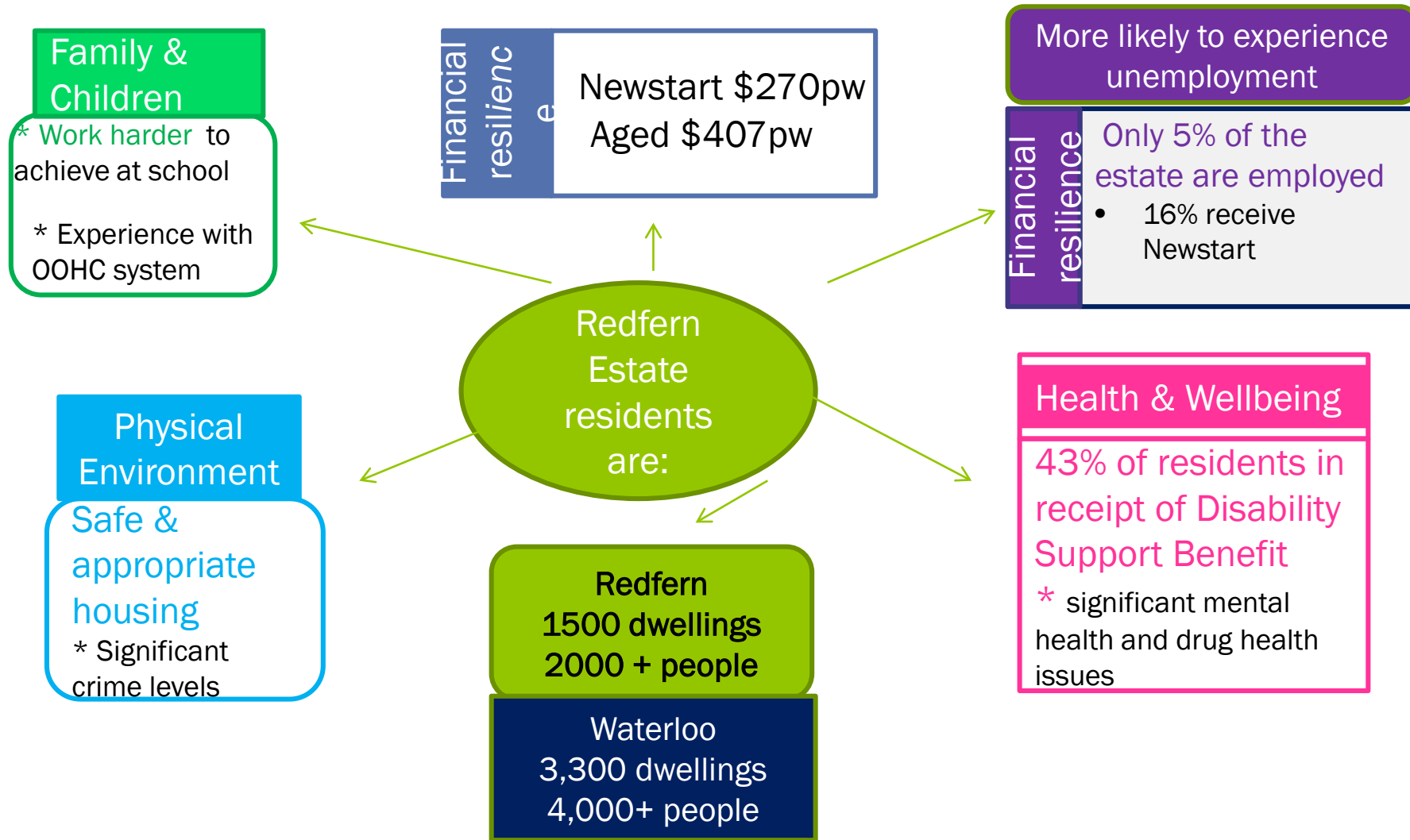
RedLink is a place based hub in the heart of the Redfern public housing estate. RedLink provides an opportunity for the community to work alongside services to deliver innovative and integrated service delivery through:

- Redfern Neighbourhood Advisory Board – our community ‘backbone’
- Network of diverse partners that share the RedLink principles and goals
- A space for services to work together with support from FACS staff
- Network of community rooms across the estate
- New initiatives and plans that attach to the RedLink ‘backbone’

RedLink Partners

- Redfern community & Redfern Neighbourhood Advisory Board
- Weave Youth and Community Centre & Women and Family
- Benevolent Society
- Partners in Recovery
- Redfern Legal and Legal Aid
- Good Sheppard Financial Advice
- Family Referral Service
- City of Sydney Council
- Sydney Local Health District
 - Healthy Homes & Neighbourhoods (families and children)
 - Chronic Care – including designated Aboriginal Chronic Care
 - Aboriginal Medical Service
 - Drug Health/Harm Minimization
 - Community Health/Oral Health

What we know- lets talk about equity



Benefits of a Place based approach

∞ Success at engaging those most vulnerable and marginalized

Case study:

2014: negative media attention across Redfern public housing estate highlighting drugs, crime and ASB. TV segment highlighting groups of people drunk ('street drinkers) and fighting

2018: combined multi-services response include:

- Women's Cooking Group/Men's Cooking Group/Social Group/Oz Harvest

Outcomes: we know all of these people by name, understand many underlying issues e.g. Stolen Generation trauma, residents have access to food which delays the periods of isolation and can engage with services

Benefits of Place Based Approach

- Provide the most timely and cost effective responses
- Right services at the right time
- Streamlined services – can leverage off trusted services

Case Study

Couple, homeless, wife 8 months pregnant, legal issues, no medical arrangements, 3 children in already in OOHC care

Response: housing assessed and temporary accommodation provided, linked into health care system, legal issues addressed

Timeframe: 2 days

Outcome: clients now successfully parenting 5th child (12 months old).

Addressing inequity through service redesign

- Outcomes of a place based approach are very different to a model that expects clients to be ready to walk in the door and ask for help.
- Acceptance by agencies that traditional approaches weren't getting the results and other ways of working were required.
- We know all of the 'drinkers' by name they are real people with real issues
- We tailor our responses and work differently with this cohort – this may include engaging with them under the tree where they gather
- Drug and alcohol, Aboriginal Chronic Care Nurse can engage informally with residents in multiple ways eg at cooking groups
- Deeper level of trust - both ways