



CPHCE Bi-monthly Newsletter

August 2020

Highlights

- We are returning to the office on the 14 September, and currently gearing up for the CES-P&CH Research Priorities Forum Central and Eastern Sydney on 2 September and our CPHCE Annual Forum on 16 September.
- Our Annual Report is just released, please click [here](#) to download.
- COVID-19 has led to the disruption of several of our research programs, but at the same time provided opportunities for the CPHCE team to make a difference, ranging from advice at a federal and state level, leadership in contact tracing, understanding the pandemic and its consequences with an equity lens, in scientific / sociological knowledge generation exchange and in public information and debate. CPHCE has joined with hundreds of other teams at all levels of government, globally, and locally, to help establish Australia in a safer position than some other countries.

- Staff have been continuing to conduct a range of work on Covid19 including with the NSW Health Department. Two recent examples of this work; Ben Harris-Roxas, Patrick Harris and Fiona Haigh are investigators on a rapid review on Urban Planning and Design for the COVID-19 era that was funded by the SPHERE Healthy Urban Environments Clinical Academic Group. Margo Barr has been appointed to become a member of the National Go8 expert group which provided social distancing advice to the Chief Medical Officer as part of the COVID-19 response.

Projects

- Community Health Navigators
Sabuj Kanti Mistry is a Scientia PhD student working on a project on Community Health Navigators (CHNs) drawn from local population groups in General Practice. The study includes a systematic review of the international literature and qualitative interviews with staff of 5 general practices with culturally and linguistically patient populations. This will be followed by a series of codesign workshops to work out the detailed role and training needs of the CHNs and a trial of their feasibility and impact in the five practices. The project is funded by Central and Eastern Sydney PHN, Sydney Local Health District and UNSW. For more information contact Sabuj sabujkanti.mistry@unsw.edu.au
- Shisha No Thanks
'Shisha No Thanks' project SEaRCH has been involved in won the Keeping People Healthy category in the SESLHD Healthcare Awards. Detail for this project please click [here](#)

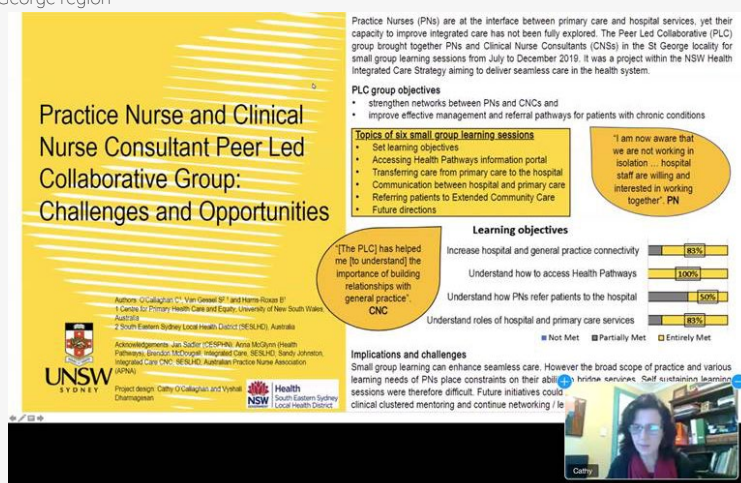
Publications

- [Implementing the Patient Activation Measure \(PAM\) in clinical settings for patients with chronic conditions: a scoping review](#)
by Rachael Kearns, Ben Harris-Roxas, Julie McDonald, Hyun Song, Sarah Dennis and Mark Harris
- [Applying an equity lens to urban policy measures for COVID-19 in four cities](#)
by Ben Cave, Jinhee Kim, Francesca Viliani, Patrick Harris, Tylor & Francis Online
- [Collaborate now with worldwide physicians and scientists!—the obscenity of predatory science](#)
by Evelyne de Leeuw
- [COVID-19—Related Infodemic and Its Impact on Public Health: A Global Social Media Analysis](#)
by Alamgir Kabir and more
- [Changing Behavior Using Theories at the Interpersonal, Organizational, Community, and Societal Levels](#)
by Robert A. C. Ruiter, Rik Crutzen, Evelyne De Leeuw, Gerjo Kok
- [Exploring pharmacists' views on an in-pharmacy medication review program in Australia using a mixed-methods design](#)
by Vera Buss, Alison Shield, Sam Kosari, Gregory M. Peterson & Mark Naunton
- [What Is the Best Practice Method for Quantifying the Health and Economic Benefits of Active Transport?](#)
by Holger Möller, Fiona Haigh, Rema Hayek and Lennert Veerman
- [Developing an evidence-informed framework for safe and accessible urban mobility infrastructures for older adults in low- and middle-income countries: a protocol for realist synthesis](#)
by Divya Sussana Patil, Uday Narayan Yadav, Sobin George, Marco Helbich, Dick Ettema and Ajay Bailey

Communication & Education

- Prevention and Management of Chronic Disease Master course led by Mark Harris and Catherine Spooner will start on 14 September. There is a one day workshop being held on 23 September 2020. Small number of non-enrolled students from LHDs or PHNs can apply to attend if you are interested please contact Catherine or Mark.
- Hyun Song had completed her PhD. Hyun will be awarded the degree of Doctor of Philosophy.
- GP registrar Tony Bolton successfully won the Charles Bridges-Webb Memorial Award 2020, he will receive \$1000 funding towards GP21 flights & phase 2 research costs.
- Christopher Standen from the Health Equity Research and Development Unit, with colleagues from The University of Sydney, has won a competitive grant from University of Sydney Business School to conduct a 2020 data collection wave for the Sydney Travel and Health Study. This longitudinal study has been running since 2013 to investigate impacts of urban developments on physical activity, health and well-being. The 2020 data collection wave will also investigate the impacts of the COVID-19 pandemic on work practices and physical activity.

- Cathy O'Callaghan presented at the AAAPC Conference 14-15 August 2020 on "Practice Nurse and Clinical Nurse Consultant Peer Led Collaborative: Challenges and opportunities", which was undertaken with SESLHD Integrated Care and practice nurses in the St George region



- Katrina Baikie also presented a poster at the AAAPC Conference 14-15 August 2020 on behalf of the HeLP-GP study entitled 'General Practitioner and Practice Nurse Experiences in Providing Preventive Care to Overweight and Obese Patients in Lower Socioeconomic Areas'

Events

- Series of CPHCE lunchtime in-house seminar :

7 July	Preventive Care for Patients who are Overweight or Obese by Katrina Baikie
28 July	OPTIMISE Refugee Health Care study results by Shoko Saito and Mark Harris
4 Aug	2ndry analysis of MedicineInsight data: Preventive health care for people with severe mental illness by Samira Afrazi
25 Aug	CPHCE Visual and alternative interview methods presentation by Jude Page, Kath Thorburn and Phoebe Lee

- Research Priorities Forum - Research Priorities for Central and Eastern Sydney held on 10am [Wednesday 2 Sept](#) via Zoom. Click [here](#) for more detail.
- SAVE THE DATE - 2020 CPHCE Annual Forum on [16 Sept 9am-12pm](#) via Team Live. This is an annual opportunity for friends and colleagues to catch up with our research. RSVP via this [link](#). For more information please visit [here](#)



Media Release & Blogs

- [Article](#) on Health Cities by Vic Health quoted Evelyn de Leeuw's input
- '[Disadvantaged areas of Melbourne hardest hit in Victoria's coronavirus outbreak](#)' by The Guardian quoted Margo Barr's input regarding disadvantage and covid-19 in Victoria

Follow CPHCE on Twitter





Follow us!



Copyright © 2019 UNSW Sydney. All Rights Reserved.
Cricos Provider Code 00098G