

CPHCE Bi-monthly Newsletter

November – December 2021



Highlights

- HERDU's Equity Fest was successfully held on Thursday 18 November, Thursday 25 November and Thursday 9 December, thank you all for attending the forum.
- Evelynne De Leeuw coordinated, with Patrick Harris as a panellist, a seminar for the World Health Organisation Forum on Health Promotion (10GHCP) on December 13th. The event was titled Shaping Policies and Politics for Well-being and Sustainability. Other panellists included Katherine Smith, Paul Cairney, Eric Breton, and Madalitso Phiri.

Projects

- **SHAReD (Shared Health Arrangements Research & Development) Study** - In partnership with UNSW and University of Sydney, Sydney Local Health District (SLHD) was awarded a Translational Research Grant to trial an electronic shared-care tool for use between SLHD mental health services and primary care to better manage risk factors for cardio-metabolic diseases and improve the health of people living with severe mental illness. The study is called the SHAReD (Shared Health Arrangements Research & Development) Study. It aims to improve the health of people living with mental illness by facilitating their engagement with primary care. It also aims to identify more effective and time efficient shared care processes, which are essential given the multiple competing demands on primary care and mental health clinicians. The project is being coordinated by Catherine Spooner (CPHCE), with Andy Simpson and Stella Jun (SLHD).
- The Centre is establishing a stream of work on **Refugee Health**. This builds on previous work on refugee health such as the **OPTIMISE study** and work by students on refugee and asylum seeker health issues. The Centre also co-leads the NAPCRG Special Interest Group on Refugee and Immigrant Health. Current projects include a review of the literature on resettlement / settlement in regional and rural areas, recording of refugee status in general practice medical records, access to care by community based asylum seekers during COVID-19.

Publications

- [Romper el statu quo al promover políticas para la salud, el bienestar y la equidad: un preludio a la UIPES 2022](#)
By Evelynne de Leeuw & more
- [Intersectorality and health: a glossary](#)
By Evelynne de Leeuw
- [The Palgrave Encyclopedia of Urban and Regional Futures](#)
By Evelynne de Leeuw & more
- [Recognizing the roles of primary health care in addressing non-communicable diseases in low- and middle-income countries: Lesson from COVID-19, implications for the future](#)
By Uday Narayan Yadav, Sabuj Kanti Mistry, Mark Harris & more
- [Validation of a lifestyle-based risk score for type 2 diabetes mellitus in Australian adults](#)
By Vera Buss, Mark Harris, Margo Barr & more
[Population Health Status of the Republic of Kazakhstan: Trends and Implications for Public Health Policy](#)
By Evelynne de Leeuw & more
- [City deals and health equity in Sydney, Australia](#)
By Patrick Harris, Evelynne de Leeuw, Elizabeth Harris & more
- [Access and communication for deaf individuals in Australian primary care](#)
By Phoebe Lee, Catherine Spooner, Mark Harris
- [Active transport research priorities for Australia](#)
By Evelynne de Leeuw & more
- [Work, income and health inequity: A snapshot of the evidence](#)
By Evelynne de Leeuw, Freddy Sitas & more
- [Healthy Cities](#)
By Evelynne de Leeuw & more
- [Difficulties faced by older Rohingya \(forcibly displaced Myanmar nationals\) adults in accessing medical services amid the COVID-19 pandemic in Bangladesh](#)
By Sabuj Kanti Mistry, Uday Narayan Yadav, Mark Harris & more
- [Protocol for a meta-narrative review on research paradigms addressing the urban built environment and human health](#)
By Jinhee Kim, Ben Harris-Roxas, Evelynne de Leeuw, David Lilley, Alana Crimeen & more
- [Experiences and perceptions of ageing among older First Nations Australians: A rapid review](#)
By Aryati Yashadhana & more
- [Ranking lifestyle risk factors for cervical cancer among Black women: A case-control study from Johannesburg, South Africa](#)
By Freddy Sitas & more
- [Policy and communication for equity – joyful levelling up during and beyond the pandemic](#)
By Evelynne de Leeuw

Communication & Education

Patrick Harris presented at an the Menzies Centre for Health Governance at ANU on November 25th. The presentation was titled 'Beuracratic Power, City Planning Minus the Politics' and covered Patrick's policy focussed research into health and urban planning over the past decade. The presentation can be viewed [here](#).

- Patrick also presented at the State of Australian Cities Conference (SOAC2021) on December 3rd. He presented work he is collaborating on which is reviewing and developing guidance on strategies to address climate and health impacts in the Western Parkland City, with the Western Sydney Health Alliance and climate and health alliance – see a report of this work [here](#).
- Vera Buss attended the Digital Medicine Conference 2021 by the health innovation hub of the [Germany Ministry of Health in Berlin](#). The 2-day conference focused on the digitalization of healthcare in a national and international context. Discussions about the new approval system for digital health apps and the reimbursement scheme through German health insurance companies as well as a panel discussion on harmonizing the procedure at the European level were particularly interesting.



Events

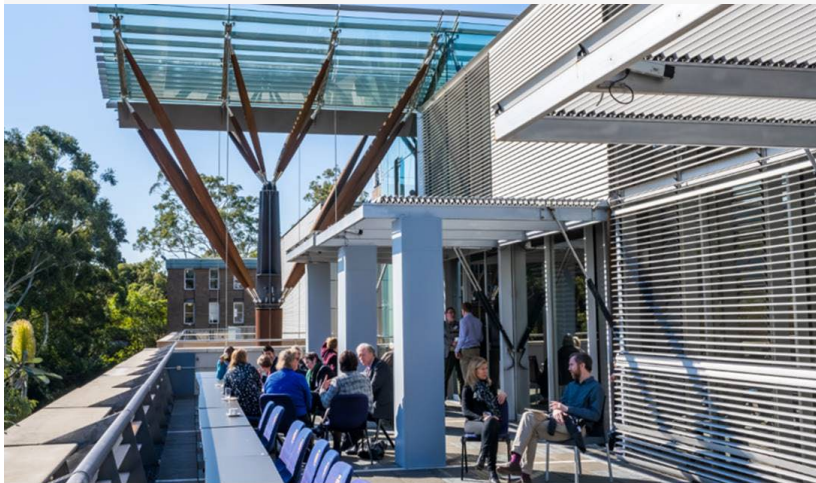
- **EquityFest 2021: The Future of Health Equity – Learning from a pandemic** on **Thursday 18 November, Thursday 25 November and Thursday 9 December 2021**. EquityFest is an annual event to progress the equity agenda in Sydney Local Health District where we reflect, engage and explore, enable action, and celebrate. This year, EquityFest held three online sessions in partnership with communities, consumers, government and non-government organisations
 - Session 1: What have we done? - Thursday 18 November 12pm - 2pm**
 - Session 2: What have we learned? - Thursday 25 November 12pm - 2pm**
 - Session 3: What do we need to do? - Thursday 9 December 12pm - 2pm (a workshop event)**

Recordings and presentation slides will be available on the CPHCE website in the future, please stay tuned for more information.

Media Release & Blogs

- [Research for health equity policy – being strategic about reality, BEE Report](#), Blog on CHETRE Website
By Jinhee Kim, Evelyne de Leeuw, Patrick Harris
- [What you can do individually and as communities, to create a better Australia we deserve](#), Blog on CHETRE Website
By Evelyne de Leeuw and Patrick Harris
- [COPping it](#), Blog on CHETRE Website
By Evelyne de Leeuw and Patrick Harris

Follow CPHCE on Twitter



Follow us!



Copyright © 2021 UNSW Sydney. All Rights Reserved.
Cricos Provider Code 00098G