

CPHCE Bi-monthly Newsletter

November – December 2022



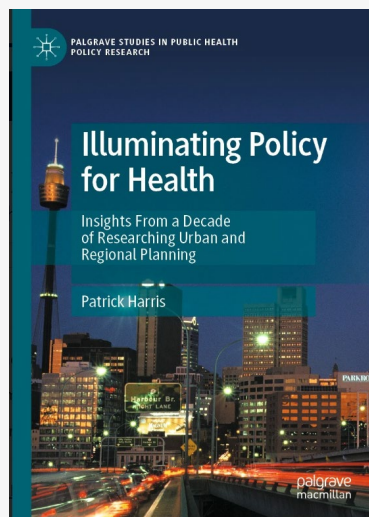
Highlights

- Shisha No Thanks' Team, (Dr Ben Harris-Roxas, Dr Nouhad el-Haddad, Dr Lilian Chan, Dr Ross Mackenzie and A/Prof Freddy Sitas and community partners from the Lebanese Muslim Association, NSW Health, the University of Sydney and the Cancer Institute for NSW) won this year's [UNSW Faculty of Medicine & Health Research Community Engagement Team Award 2022](#)

This team worked together to improve community awareness of the harms of waterpipe use, a form of tobacco smoking. It has had a demonstrable impact on awareness of potential harms, has broken new ground in working with Arabic-speaking communities in NSW, and the project materials are being used globally in Lebanon and Canada.

- Dr. Patrick Harris, Senior Research Fellow and Deputy-Director from CHETRE has published a new book '[Illuminating Policy for Health: Insights From a Decade of Researching Urban and Regional Planning](#)'

This book focus on how public health ideas and interests can inform and influence policymaking. It also draws on insights from Political Science and Critical Realism then applies these ideas to analysis of land use and infrastructure.



- 2168 Community Household Survey Project is well underway - collected 100 responses from Miller residents so far. The last Miller Household Survey in 2010 showed that: speeding traffic; drinking in public spaces; litter; rubbish; poor state of the shopping precinct, and lack of safe spaces for children and recreational facilities were among issues of most concern in the community (The Centre for Health Equity Training Research and Evaluation, 2010). It also found that while most respondents reported good health, average scores on standardised physical and mental health assessments showed the sample was well below other Australian norms.

The picture includes some residents recruited, trained, and employed as survey interviewers part of the project.

Projects

- Systematic review on governance and management of jointly commission or planned health services and programs for NSW Primary Health networks and Local Health Districts is being conducted with report due at the end of January 2023.
- CHECC study involves Community Health Worker follow up of patients from hospital in Sydney Local Health District has commenced recruiting and providing home visits.

People

- Alamgir Kabir has been granted his PhD.

Publications

- [Aboriginal and Torres Strait Islander Peoples and the COVID-19 Pandemic: A Spatial and Place-Based Analysis](#)
By Aryati Yashadhana & more
- [Management of cardiovascular disease risk in people with comorbid mental illness: A cross sectional study in Australian general practice](#)
By Mark Harris & more
- [The collateral damage of COVID "normalcy"](#)
By Glen Ramos
- [Revisiting the IJE's Cohort Profile series—how have the cohorts fared?](#)
By Freddy Sitas & more
- [Preventing chronic disease in overweight and obese patients with low health literacy using eHealth and teamwork in primary healthcare \(HeLP-GP\): a cluster randomised controlled trial](#)
By Sharon Parker, Margo Barr, Alamgir Kabir, An Tran, Mark Harris & more
- [Translating Health Coaching Training into Clinical Practice](#)
By Cathy O'Callaghan, Ben Harris-Roxas & more

Communication & Education

- Jinhee Kim presented the following topics at the [18th International Conference on Urban Health](#) in Valencia, Spain on 24th -27th October 2022:
 - a. Different approaches to research on urban health: a bibliometric analysis guided meta-narrative review (Oral presentation)
Jinhee Kim, Evelyn de Leeuw, Ben Harris-Roxas, Peter Sainsbury
 - b. Which urban health paradigm is yours? (Workshop)
Jinhee Kim, Alana Crimeen, Kristina Ulm, David Lilley, Evelyn de Leeuw, Ben Harris-Roxas, Peter Sainsbury
- Evelyn de Leeuw delivered the [Eberhard Wenzel Oration](#) on 14th December, she also presented at the 'UN City' at Copenhagen:



- A delegation from the Korean Ministry of Health and Welfare and the Korea Health Promotion Institute visited CPHCE on 17th Nov 2022 to discuss and learn about CPHCE & HUE's work in healthy cities. Korea introduced healthy cities into national legislation last year and is setting up a national healthy cities program.



- Michael Tam received last year's Future Leaders President's Medal at the [2022 RACGP Awards Ceremony](#).



- Esther Alloun, Kerryn Drysdale, Jennifer Green and Fiona Haigh presented a paper that Esther been working on called "Enduring crisis and resilience in health care work: the affective lives of a pandemic" at the Cultural Studies [Association of Australasia 30th Anniversary Conference](#) Melbourne on 1st -3rd December 2022.

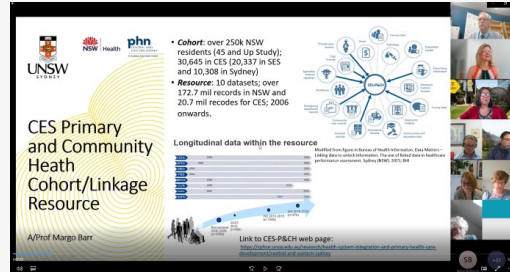
Short description of the presentation: Drawing on qualitative data collected as part of an equity-focused health impact assessment, the paper explores the experiences of health care workers during different phases of the COVID-19 pandemic and how they navigate ambivalent and sometimes contradictory ideas and demands. This work has implications for how to best support health workers as they attempt to provide care in the context of shifting and ongoing crises, and for resilience policy.



Events

• 2022 Research Priorities Forum - Research Priorities for Central and Eastern Sydney Primary and Community Health Cohort

Thirty-eight people attended the two-hour research priorities webinar on Wednesday 15th November 2022 organised by the Centre in collaboration with SLHD, SESLHD and CESPHN. The purpose of the day was to identify research priorities to inform a program of work using the Central and Eastern Sydney Primary and Community Health Linkage Resource (CES-P&CH) for 2023 and beyond. Priorities identified included evaluating models of care, exploring link between oral health and overall health, health literacy and multimorbidity. A list of possible priorities will be sent out to all of the participants soon to vote on and then the Management Group will be considering the top priority areas—applying primary health care, feasibility and policy relevance lenses — to finalise the research question and program of work. A report on the forum will be available soon. Thanks to everyone who attended, for more information contact [Margo Barr](#).



Follow CPHCE on Twitter



Follow us!



Copyright © 2023 UNSW Sydney. All Rights Reserved.
Cricos Provider Code 00098G