



UNSW Research Centre for Primary Health Care and Equity Annual Report 2011

Never Stand Still

Faculty of Medicine

Centre for Primary Health Care and Equity







ACKNOWLEDGMENTS

The work of the Centre depends upon the engagement, support and goodwill of many different people and organisations.

At the front line, there are the researchers and those individuals and organisations that contribute to our research. Without them there would be no Centre and no research.

These are supported by a small group of administrative staff, who assist a very varied set of research projects and manage the links with the University systems. We recognise the support from staff from the Grants Management Office and other support services for their assistance.

As ever, we work closely with the School of Public Health and Community Medicine. We thank the Head of School, Professor Raina MacIntyre and the staff who have worked with us as collaborators and co-investigators, and note that two of our Directors, Professors Nick Zwar and Teng Liaw are part of the School. We also thank the Faculty of Medicine for their support.

We continue to receive invaluable advice and support from the Management Board and Advisory Committee. We are grateful to the members of these groups for their work during the year, particularly the Chairs, Senior Associate Dean Professor Terry Campbell and Emeritus Professor Ian Webster.

Beyond the university we have strong links with many health and health related organisations including Divisions of General Practice and Local Health Districts, local government and non-government organisations. In 2011 we continued to develop strong relationships with the South Western Sydney, Central Sydney and South East Sydney Local Health Districts (LHD) and the Medicare Locals being established in these areas.

The Centre received funding support from NSW Health through a Capacity Building Infrastructure Grant and from the Department of Health and Ageing for the Research Capacity Building Program. The Ingham Health Research Institute provided infrastructure funding for CHETRE and the General Practice Unit in Fairfield.

CONTENTS

Acknowledgments	1
Background	3
Management Board and Advisory Committee	4
Message from the Chair of the Management Board	6
Message from the Chair of the Advisory Committee	7
Message from the Executive Director	8
Research	10
Prevention and Management of Chronic Disease	12
Primary Health Care System Development	13
Understanding and Intervening to Reduce Health Inequalities	15
The UNSW Primary Health Care Research Capacity Building Initiative (RCBI)	18
Teaching	21
Undergraduate Teaching	21
Research Students	23
Undergraduate Students	25
Partners and Affiliates	26
Staff	28
Financial Report	32
Publications	33
Contact Us	40



BACKGROUND

We are a UNSW research centre operating from three locations: on campus at Randwick, Liverpool (the Centre for Health Equity Training, Research and Evaluation (CHETRE)) and Fairfield (the General Practice Unit).

Our research aims to strengthen primary health care and address health inequalities and the social determinants of health, across three broad areas:

- prevention and management of chronic diseases;
- primary health care system development; and
- understanding and intervening to reduce health inequalities.

Working across these areas at national, state and local levels enables us to investigate issues at the level of individuals and communities, services and systems as well as putting them in an international context.



MANAGEMENT BOARD AND ADVISORY COMMITTEE

2011 MANAGEMENT BOARD

Voting members	
Professor Terry Campbell (Chair)	Senior Associate Dean, Faculty of Medicine, UNSW
Professor Mark Harris	Executive Director, Centre for Primary Health Care and Equity
A/Professor Gawaine Powell Davies	CEO and Director, Centre for Primary Health Care and Equity
Dr Teresa Anderson	Chief Executive, Sydney Local Health District
Professor Ilan Katz	Social Policy Research Centre
Professor Raina MacIntyre	Head, School of Public Health and Community Medicine
Professor Bill Randolph	Director, City Futures Research Centre, Faculty of the Built Environment
Non-voting member	
Ms Sarah Ford (Secretariat)	Finance Manager, Centre for Primary Health Care and Equity

The management Board oversees the work of the Centre, ensuring that it pursues its objectives in line with its terms of reference and is financially sound. The Board met on 8th March, 19th July and 8th November 2011.

2011 ADVISORY COMMITTEE

Emeritus Professor Ian Webster AO (Chair)	School of Public Health and Community Medicine, UNSW
Ms Tish Bruce	Director of Community Health, SE Sydney and Illawarra Local Health District
Professor Mark Harris	Executive Director, Centre for Primary Health Care and Equity
Associate Professor Lynn Kemp	Director, CHETRE
Ms Elizabeth King	Manager, Strategic Research and Development Branch, Centre for Health Advancement, NSW Health
Ms Lesley King	Executive Director, Centre for Overweight and Obesity, Sydney University
Mr Scott McLachlan	Director of Operations, Primary and Community Networks, Hunter New England Local Health District
Professor Teng Liaw	Director, Fairfield General Practice Unit
Professor Raina MacIntyre	Head, School of Public Health and Community Medicine UNSW
Ms Jan Newland	CEO, GP NSW
Assoc. Professor Gawaine Powell Davies	Chief Executive Officer and Director, Centre for Primary Health Care and Equity
Assoc. Prof Virginia Schmied	School of Nursing and Midwifery, University of Western Sydney
Dr Christine Walker	Chronic Illness Alliance, Victoria
Professor Nicholas Zwar	Professor of General Practice, School of Public Health and Community Medicine

The Advisory Committee provides strategic advice to the Centre on its research program. It met on 22 March and 20 September 2011.



MESSAGE FROM THE CHAIR OF THE MANAGEMENT BOARD



While thinking about what to write in this report and reflecting on another successful year for the Centre in 2011, it occurred to me that readers may be interested in how the Centre fits into the larger picture of UNSW Medicine and its overall research efforts. UNSW Medicine undertakes research across the spectrum: from laboratory-based basic science to applied research in how to improve health services and health care, and from highly specialised treatment to generalist primary and community health care, with its emphasis on prevention, self management and equity. The focus of CPHCE is squarely on applied research in primary and community health care, by far the largest component of health care in Australia and most other countries, but at the same time one of the least well-researched. It has traditionally received less favourable attention from the usual grant funding bodies than has the laboratory-based research carried out for example, in our School of Medical Sciences. This is changing for the better, but still has some room to move.

CPHCE is about understanding how issues of health and equity arise, their impact on individuals and communities and how research findings can be used to improve health care, primary health care in particular. This is important for the nation as it works out how to come to grips with the growing burden of long term and preventable conditions, for groups whose poorer health and inequitable access to health care has been a shadow on our society, and for health services whose functioning depends upon a strong primary health care sector. For the Faculty it is an important piece in the overall jigsaw of health research.

CPHCE has a history of addressing the problems of contemporary primary health care, producing research findings and then doing the hard yards in terms of translating these facts into changes in policy in a politically very complex area. This involves maintaining close ties with national and state directions in health care and keeping up with the many changes that have been a feature of the last five years. In the immediate future, it will particularly involve working with the new Medicare Local organisations and Local Health districts that will have much to do with how primary health care is delivered to the next generation of Australians. Researchers in CPHCE also strive to create and maintain international links so that the best practices available anywhere in the world can be translated and imported as quickly as possible into Australia.

In terms of research outcomes in 2011, the Centre has done wonderfully well as can be seen from this Report, with total research income from external sources in excess of \$4 million. Some 43 papers have been published in peer reviewed journals along with seven book chapters and one book.

Amongst many excellent programs and achievements is the Centre of Research Excellence Award to Professor Mark Harris and his team for their Centre for Obesity Management and Prevention Research Excellence in Primary Health Care, the expansion of the MECOSH Early Childhood home visiting program which is now very ably being carried on by Associate Professor Lynn Kemp and is attracting huge attention in Australia and internationally, and the continuing Gudaga cohort study of Aboriginal children which is providing insights into the health, development and service use of this important group of young Australians and the world-leading work on Health Impact Assessments.

A handwritten signature in black ink that reads 'T. Campbell'. The signature is fluid and cursive.

PROFESSOR TERRY CAMPBELL
Chair, Management board

MESSAGE FROM THE CHAIR OF THE ADVISORY COMMITTEE



The ever changing health sector again is in a state of flux. With its repertoire of solutions for today's community health and social issues based on practical, front-line research, the Centre for Primary Health Care and Equity has important things to say to governments about current policy directions: "Closing the Gap" for Indigenous people, the current Parliamentary Inquiry into Foetal Alcohol Spectrum Disorders (FASD), the links between primary health care of the evolving Medicare Locals and Local Health Networks and the unsolved problems of mental health.

The Gudaga Project in South West Sydney is now eight years old. It has followed the progress, development and entry into education of new-born Aboriginal children as well as their mothers' welfare and family environment. It shows how health problems in Aboriginal children, including FASD, can be prevented. Sustained home visiting to newborns and their families demonstrates how affected babies can be identified and better managed leading to improved outcomes in their education and development. This approach is relevant to Aboriginal children's health wherever they might be in Australia but especially in disadvantaged communities.

'Walk the Talk', a programme for long-term unemployed people - especially for those with mental health difficulties - was launched at the Cabramatta Community Centre on April 17th by the Honourable Kate Ellis, Minister for Employment Participation and Minister for Early Childhood and Child Care. One of the main aims in mental health is to assist people with continuing mental difficulties to lead a contributing life. The essence is to "have something to do and, something to look forward to". The project is recognised internationally and is precisely what is needed to give meaning and purpose to the impoverished lives of people stuck without a job and nowhere to go.

These are but two examples of the relevance of the work undertaken by the Centre.

The Advisory Committee assists the Centre's leadership reflect on their achievements and difficulties and in setting the research agenda for the future. Our meetings are brim-full with ideas.

As in the past, we acknowledge the leadership of Professors Terry Campbell and Mark Harris and Associate Professor Gawaine Powell Davies. I express our admiration for the work in each of the research streams and wish all the researchers productive future careers in research

We endorse the thanks of Professors Campbell and Harris for the support and encouragement of external funding bodies, University, Faculty of Medicine and to the School of Public health and Community Medicine.

A handwritten signature in black ink, reading "I. W. Webster".

EMERITUS PROFESSOR IAN W WEBSTER AO
Chair, Advisory Committee

MESSAGE FROM THE EXECUTIVE DIRECTOR



In 2011 the Centre embarked on some major new directions. Many of these were based at CHETRE (Liverpool) including major new projects on Aboriginal child health home visiting and the health of Aboriginal children entering school in the Bulundidi Gudaga trial and the ongoing Gudaga cohort study. Community STaR (Service for Training and Research) is conducting research and providing training for health and human service workers and community members in disadvantaged communities. Our linked data analysis has identified the importance of continuity of primary care in the management of patients with diabetes and colorectal cancer.

A number of research programs entered new phases of work. The PEP study on guideline implementation developed an innovative intervention in its first phase and conducted a pilot in readiness for the trial in four states in 2012. The Health Impact Assessment Study completed analysis of 55 HIA's in Australia and New Zealand over a five year period and began in depth analysis of 11 of these.

We also translated much of our completed work into publications and presentations which have informed policy and practice. The HIPS study was a large trial of a lifestyle intervention to prevent chronic vascular disease in general practice. This has resulted in over 10 publications and 12 presentations. In combination with other prevention research (including the ART study on Absolute cardiovascular risk assessment and the Community Health SNAP study) it has been presented in workshops and symposia for policy makers and practitioners and the frameworks have been used in the obesity guidelines.

The evaluation trial of the Moving On self-management program has also been completed and in addition to publications, Arthritis NSW has plans to disseminate the program more widely. The Miller Early Childhood Sustained Home-visiting Trial (MECSH) has resulted in a Program which is being taken up in the UK as well as by state governments in Australia. Our unemployment and health research has led to a cognitive behavioural (CBT) based intervention (and a DVD called "Walking the Talk") which is being implemented through employment providers and other services.

We support the development of research capacity in primary health care through the Primary and Community Health Research Unit (PCHRU) and PHReNet research network including a project which electronically links PHReNet practices with community health and hospitals. We have developed our own capacity to use innovative research methodologies including social network analysis.

Our research has continued to inform government health policy at state and national levels. We have been actively involved in health reform including the establishment of Medicare Locals. The findings from our intervention research continue to be disseminated to and adopted by Divisions of General Practice and Community Health Services. We have contributed to the health reform through academic publications and presentations as well as a strategy to engage policy makers and the media in our research.

We have also contributed to the capacity of Local Health Districts, local government, NGOs and other local organisations to undertake Health Impact Assessments (HIAs). Our ARC funded research project to evaluate the effectiveness of HIAs in Australia and New Zealand began well. Our work on HIA was recognised by an International Association of Impact Assessment (IAIA) award early in 2010.

We have a broad range of partnerships with other researchers, policymakers, practitioners, local communities and consumers. During 2011 we received visits from a number of international researchers including Richard Hobbs from the University of Birmingham and Jacqueline Barnes from Birkbeck College London, Karen Whittaker from the University of Central Lancashire and Jean-Frédéric Levesque from the Institut National de Santé Publique du Québec, Professor Yuan Zhaokang from Nanchang University in China and a delegation from Korea.

2011 was also a year of loss in the passing of our colleague and friend Dr Jeremy Bunker, Staff Specialist in General Practice at the General Practice Unit, Fairfield Hospital and conjoint lecturer with the University of New South Wales. Jeremy was an inspirational general practitioner and medical educator but another of his many talents was research. With assistance from a Faculty Grant, Jeremy had successfully conducted a study on case finding for chronic obstructive pulmonary disease. This study involved practice nurses and general practitioners from practices who are members of the practice-based research network. As well as being an excellent example of the value of the research network the publication from this study was awarded best paper in Australian Family Physician in 2010. The project also formed the basis of a successful NHMRC Project Grant on case finding and early intervention in COPD (Pelican study). Jeremy was the driving force behind the grant application and was a leading member of the Pelican project team right up until his death. He is greatly missed.



Looking Forward

In 2012 and beyond we will continue to develop:

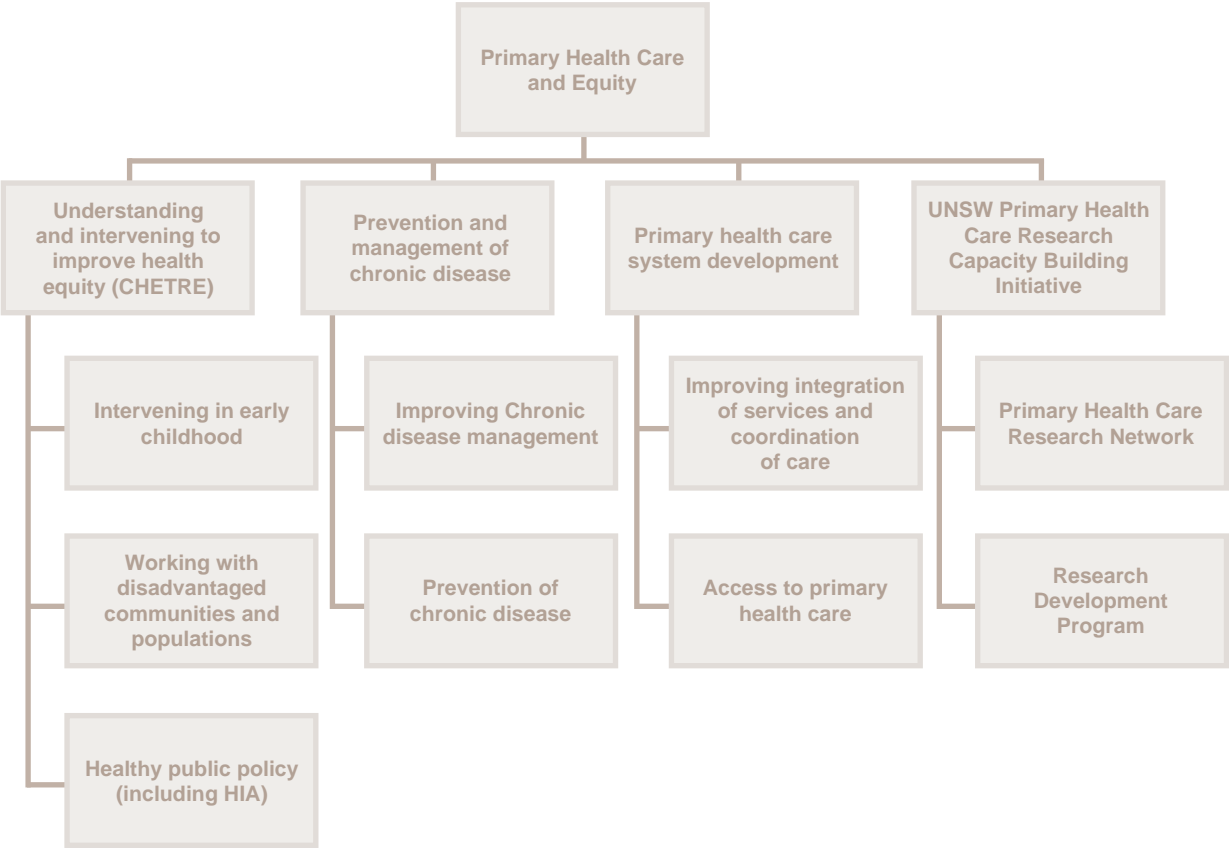
- our research on chronic disease with a focus on multi-morbidity;
- research on the prevention and management of obesity;
- new research on disadvantaged populations including refugees and indigenous prisoners;
- further developing our partnerships with general practice and community health services in NSW to conduct research and evaluation which is relevant to their needs and priorities;
- strengthening international collaborations and the Centre's international profile.

PROFESSOR MARK HARRIS
Professor of General Practice and Executive Director,
UNSW Research Centre for Primary Health Care & Equity, UNSW



RESEARCH

The following diagram shows the Centre's research streams and their sub-programs.



In the following list of research projects, the chief investigator is named first (in bold) followed by the project coordinator (underlined). Other members of the research team are listed in alphabetical order, with affiliations for those who are not part of CPHCE. The source of funding is given in brackets. For further details of projects, please see our web site (www.cphce.unsw.edu.au).

PROFILE: RESEARCHER

RESEARCHER PROFILE: DR REBEKAH GRACE



For as far back as I can remember I only ever wanted to be a musician. I was a very serious flautist and singer. I also played piano and guitar and experimented with music composition. I had won eisteddfods and sung in bands and performed at weddings. In the summer immediately following my HSC, I saw a picture in the newspaper of a newborn baby girl who had died after being abandoned. My heart broke for this child, and especially for her mother, whoever she was, who no doubt felt bereft of any other option. This one image stayed with me and changed my life. I changed my university preferences from music to psychology, and was accepted at Sydney University.

Throughout my undergraduate years I developed a particular interest in the relationship between psychological and physiological well-being, leading me to accept the offer of a PhD position in the Department of Psychological Medicine at the University of Sydney. My PhD research explored the life experiences and meaning making of children with Tourette's Syndrome and their families, and examined the relationships between environmental factors and the nature and frequency of ticking. I spent a year of my research working with leading researchers from the Socio-Behavioural Research Group at UCLA, and conducted my pilot study out of the Department of Child and Adolescent Psychiatry, Primary Children's Hospital, Salt Lake City, Utah. This was an interesting experience, particularly because Tourette's Syndrome was prevalent in one particular polygamist community, and I was able to observe the ways in which cultural and religious belief systems can influence the nature of an involuntary response, such as a vocal tic. I graduated from my PhD in 2002, now the mother of two very beautiful little boys.

My research career moved from there to working within health sciences at the University of Sydney under Professor Gwynnyth Llewellyn. Here my research focused on the service and support needs of children with disabilities and their families. From there I went to the Institute of Early Childhood at Macquarie University and lectured in child development and developmental diversity. In 2007 I took up a DoCS funded Research Fellowship in the Children and Families Research Centre (CFRC) at Macquarie University. My research in the CFRC focused on integrated models of service delivery, early childhood service engagement for disadvantaged families, parenting programs for 'at risk' families, and the barriers and facilitators to service engagement for Indigenous families.

In 2010 I was thrilled to join CHETRE. I feel honoured to lead the Early Childhood Stream, a stream made up of very influential and important programs of work, such as the MECOSH and Gudaga programs, and home to an outstanding group of researchers. My research continues to focus on the service and support needs of vulnerable families and their children. I am excited by the directions our major programs of research are taking, as well as the development of new programs of research. Throughout my research journey I have carried with me the picture of the abandoned baby girl, and it continues to motivate me to ensure that our work makes a difference in supporting those who are most vulnerable within our communities.

PREVENTION AND MANAGEMENT OF CHRONIC DISEASE

Our research on the prevention and management of chronic disease in primary health care addresses a broad range of problems currently confronting the health system as it struggles to deal with the increasing burden of chronic disease. These include innovations in the roles of health care providers within the primary care team, engagement of patients in their own care, use of new information and decision support tools and quality improvement strategies, and better coordinated referral and coordination between PHC care providers.

Improving Chronic Disease Management

This program focuses on improving the quality of care for a range of chronic disease in primary health care including diabetes, chronic respiratory and cardiovascular disease, cancer and patients with multiple conditions including chronic physical and mental illness. The theoretical basis of this work has been the expanded chronic illness model which identifies the support systems and organization required for optimal patient centered chronic disease management including new roles for primary care providers especially practice nurses, support for patient self management, decision support and information systems. This work has informed better clinical management and the development of primary health care policy and initiatives to support the organization of care for patient with chronic disease in general practice. This program is increasingly focusing on patients with multi-morbidities in primary health care.

Randomized controlled trial of Moving On: a self management program for persons with a chronic illness (Arthritis NSW and the National Prescribing Service)

Research Team: **Anna Williams**, Diana Aspinall (Arthritis NSW), Leah Bloomfield (School of Public Health and Community Medicine), Eloise Buggy (Arthritis NSW), Darren Carr (Hawkesbury Hills Division of General Practice), Karen Filocamo (Arthritis NSW), Mark Harris, Nicholas Manolios (Sydney West Local Health District), Therese Wellsmore (Northern Sydney Central Coast Area Health Service).

Secondary Analysis of Data from Commonwealth Fund Survey (Australian Commission on Safety and Quality in Health Care)

Research Team: **Mark Harris**, Mahnaz Fanaian, Upali Jayasinghe, Siaw-Teng Liaw, Meredith Makeham, Gawaine Powell Davies, Nicholas Zwar.

Referral pathways in colorectal cancer: general practitioners patterns of referral and factors that influence referral (Cancer Australia)

Research Team: **Mark Harris**, **Shane Pascoe**, Michael Barton (SWSLHD), Justin Beilby (University of Adelaide), Lisa Crossland (University of Adelaide), David Goldsbury (St Vincent's Hospital), Dianne O'Connell (NSW Cancer Council), Allan Spigelman (St Vincent's Hospital), John Stubbs (Cancer Voices), Craig Veitch (Sydney University).

Culturally appropriate diabetes care in mainstream general practice for urban Aboriginal & Torres Strait Islander people (NHMRC)

Research Team: **Siaw-Teng Liaw**, **Phyllis Lau** (Department of GP, University of Melbourne), John Furler (Department of GP, University of Melbourne), Margaret Kelahe (Onemda VicHealth Koori Health Unit, Centre for Health & Society Melbourne School of Population Health, University of Melbourne), Priscilla Margaret Pyett (Monash University), Kevin Rowley (Onemda VicHealth Koori Health Unit, Centre for Health & Society Melbourne School of Population Health, University of Melbourne).

PELICAN: A cluster randomised trial of early intervention for Chronic Obstructive Pulmonary Disease by practice nurse - GP teams (NHMRC)

Research Team: **Nicholas Zwar**, Jeremy Bunker, Alan Crockett (University of Adelaide), Sarah Dennis, Sandy Middleton (Australian Catholic University), Helen Reddel (Woolcock Institute, University of Sydney), Onno van Schayck (Maastricht University), Sanjyot Vaghokar.

Shifting ground, common ground: understanding the evolving care practice. Inter-country comparative study Canada USA and Australia (Canadian Institute for Health Research)

Research Team: **William Hogg** (University of Ottawa), **Mark Harris**, Ben Crabtree (University of New Jersey), Jane Gunn (Melbourne University), JF Levesque (Université de Montréal), William Miller (Pennsylvania State University), Grant Russell (Monash University), Catherine Scott (Alberta health Services).

Muramali Project evaluation: Aboriginal community health brokerage service (Macarthur Division of General Practice)

Research Team: **Nick Zwar**, Sarah Dennis, Iqbal Hasan Lisa Jackson Pulver, Ian Wilson (University of Western Sydney).

Telephone coaching models to support chronic disease management in multi-morbid and vulnerable populations: a rapid review (Sax Institute)

Research Team: **Sarah Dennis**, Mark Harris, Jane Lloyd, Gawaine Powell Davies, Nighat Faruqi, Nick Zwar.

Realist synthesis of self-management interventions for disadvantaged populations with chronic conditions (Canadian Institutes of Health Research)

Research Team: **Susan Lynn Mills** (University of British Columbia), Carole Gillam (Vancouver Coastal Health Authority), Tom Blakeman (University of Manchester), Connie Davis (Impact BC), Sarah Dennis, Maylene Fong (Vancouver Coastal Health Authority), Shanon Koehn (University of British Columbia), Kelly McQuillen (BC Ministry of Health Services), Christopher Rauscher (Vancouver Coastal Health Authority).

Quality improvement in general practice

PhD Student: **Barbara Booth.**

Supervisors: Mark Harris and Nicholas Zwar.

Advance Care Planning in Australian primary care

PhD Student: **Joel Rhee.**

Supervisors: Nicholas Zwar and Lynn Kemp.

Integrating chronic illness self-management plans with primary care management: a clarification model of patient-provider care congruence

PhD Student: **Anna Williams**

Supervisors: Mark Harris and Patricia Bazeley.

Preventing Chronic Disease

Our research in prevention has focused on the behavioural risk factors (smoking, nutrition, alcohol, physical activity) and the physiological conditions which predispose to chronic diseases (obesity, hypertension, dyslipidaemia, and pre-diabetes). We have developed and evaluated interventions based on the 5As framework (Assess, Advise, Agree, Assist, Arrange) across the life-cycle. Our research has included mixed method feasibility studies, quasi experimental and cluster randomized trials in both general practice and community health services. The interventions have included interactive training of health professionals in assessment of risk and motivational interviewing, enhancing the role of practice nurses, supporting referral and uptake of individual and group diet and physical activity education programs, and long term follow up and support. This research has informed NSW and Australian Government health policy and been translated into guidelines and resources for practitioners.

Community Health SNAPW Trial (NSW Health)

Research Team: **Mark Harris**, **Rachel Laws**, **Bibiana Chan**, Bettina Christl, Mahnaz Fanaian, Upali Jayasinghe, Gawaine Powell Davies, Anna Williams.

The feasibility and impact of cardiovascular absolute risk assessment in general practice (ART Study) (NHMRC GP Clinical Project Grant)

Research Team: **Mark Harris**, **Elizabeth Denney-Wilson**, Terry Campbell (Faculty of Medicine, UNSW), Iqbal Hassan, Suzanne McKenzie, Anushka Patel (George Institute), Heike Schütze, Sanjyot Vagholkar, Christine Walker (Chronic Illness Alliance), Qing Wan, Nicholas Zwar.

A mixed method study to inform the development of a child obesity prevention intervention: the Healthy 4 Life Study

Research team: **Elizabeth Denney-Wilson**, Alison Robinson, Mark Harris, Rachel Laws.

Implementing guidelines to routinely prevent chronic disease in general practice (PEP) (NHMRC Partnership Grant, BUPA, NHF and RACGP)

Research Team: **Mark Harris**, **Yordanka Krastev**,¹ Bettina Christl, Chris del Mar and Jane Smith (Bond University), John Litt (Flinders University), Danielle Mazza and Grant Russell (Monash University), Gawaine Powell Davies, Richard Taylor, Nicholas Zwar (School of Public Health and Community Medicine, UNSW), Mieke van Driel (University of Queensland).

SEEF equity study: access to preventive and primary health care (NHMRC)

Research Team: **Mark Harris**, Fakhru Islam, Elizabeth Comino (in collaboration with Sydney University).

Torpedo study: cardiovascular risk assessment and management in primary care. (NHMRC funding agreement with George Institute)

Research Team: **Mark Harris**, Sharon Parker, Nicholas Zwar

Mental health and prevention of cardiovascular disease in general practice: impacts and interactions

PhD Student: **Suzanne McKenzie**

Supervisors: Mark Harris and Gavin Andrews (St Vincent's Hospital).

Pharmacological management of absolute cardiovascular risk in general practice.

PhD Student: **Sanjyot Vagholkar.**

Supervisors: Nicholas Zwar and Mark Harris.

PRIMARY HEALTH CARE SYSTEM DEVELOPMENT

This stream of research is concerned with understanding primary health care and how it can be strengthened at service, network, regional and national levels. A major question in this area is how clinicians and services will respond to recent changes in the primary health care system, what impact this will have on the quality, reach and equity of primary health care and how this can be measured.

Improving Integration of Services and Coordination of Care

In 2011 we continued to explore coordination of care for people with chronic and complex conditions through a PhD study that focused on collaboration in diabetes care, program evaluations of the NSW Health Connecting Care program and through studies of integration of care in Fairfield. There are two Indigenous programs, on cultural respect in general practice and on access to primary health care for Indigenous people released from prison. We are building research

1 Replaced by Sharon Parker in 2012

capacity with community health in south western Sydney through a program which supports research projects within community health teams, and an emerging electronic practice based research network. The research contributes to our program on primary health care leadership to middle managers in primary and community health, a module on primary health care for nurses in rural areas and the Masters course on health care in the community.

Primary and Community Health evaluation framework (Hunter New England Health)

Research Team: **Julie McDonald**, Gawaine Powell Davies.

Primary Health Care Leadership Development Program (SWSLHD, HNELHD, SESILHD, GSAHS and NSW Health).

Research Team: **Gawaine Powell Davies**, Sue Kirby, Julie McDonald.

How can the primary health care system better support Aboriginal Australians released from the criminal justice system? (APHCRI)

Research Team: **Jane Lloyd**, Penny Abbott (UWS), Eileen Baldry (School of Social Sciences and International Studies), Mark Harris, Devon Indig (Centre for Health Research in Criminal Justice), Elizabeth McEntyre (Awabakal Newcastle Aboriginal Cooperative), Sonya Nicholl (Justice Health), Jennifer Reath (UWS), Carla Saunders (SE Sydney LHD), Juanita Sherwood (UTS), Dea Thiele (Aboriginal Medical Service Western Sydney).

Establishing the UNSW ePBRN (Faculty & MREII)

Research Team: **Siaw-Teng Liaw**, Jeremy Bunker, Tom Chen, Sarah Dennis, Mark Harris, Bin Jalaludin (SWSLHD), Gawaine Powell Davies, **Jane Taggart**, Nick Zwar, Elizabeth Comino.

Developing and implementing a framework to assess and improve integration of care for people with COPD provided by Fairfield Hospital to the Fairfield community

Research Team: **Siaw-Teng Liaw**, Jeremy Bunker, Sarah Dennis, Sanjyot Vagholkar

South West Sydney Primary and Community Health Research Unit (PCHRU) (Ingham Centre for Applied Medical Research)

Research Team: **Elizabeth Comino**, **Emma Friesen**, Alison Derrett (SWSLHD), Sarah Dennis, Matthew Jennings (SWSLHD), Maree Johnson (UWS), Lynn Kemp, Fakhra Maan, Katharine Moore (SWSLHD), Siaw-Teng Liaw, Rene Pennock (Macarthur DGP), Gawaine Powell Davies, Jennifer Reath (UWS).

Information-enhanced integrated care research in SW Sydney (Sydney SW Integration Program)

Research Team: **Siaw-Teng Liaw**, **Jane Taggart**, Jeremy Bunker, Tom Chen, Sarah Dennis, Bin Jalaludin (SWSLHD), Della Maneze, Sanjyot Vagholkar, Nicholas Zwar.

Evaluation of SW Sydney Integration Program. (Sydney SW Integration program)

Research Team: **Nicholas Zwar**, Iqbal Hasan, Siaw-Teng Liaw

Qualitative study of two Superclinics (RACGP and Monash University)

Research Team: **Grant Russell** (Monash University), **Mark Harris**, Gawaine Powell Davies, Nicholas Zwar.

Primary Health Care education package development (Primary Health Care: Principles for Practice) (NSW Health Murrumbidgee Local Health District via Sydney University, \$10,000)

Project Team: **Gawaine Powell Davies**. University of Sydney team: **Yun-Hee Jeon**, Heather McKenzie, Mary Chiarella, Jane Conway, Peter Driscoll, John Grootjans, Lillian Hayes, Sue Selden.

Collaboration between health professionals across organisational boundaries: a case study of diabetes

PhD Student: **Julie McDonald**.

Supervisors: Mark Harris and Rohan Jayasuriya.

Do patient attitudes contribute to frequent readmissions?

PhD Student: **Sue Kirby**

Supervisors: Sarah Dennis and Mark Harris.

Cultural respect in general practice in Sydney (NHMRC PhD scholarship)

PhD Student: **Heike Schütze**.

Supervisors: Mark Harris and Lisa Jackson-Pulver

Access to Primary Health Care

We are researching the impact of receiving best practice primary health care on health status and health outcomes, linking data from administrative data collections such as Medicare and hospital separations and from the 45 And Up study, a large cohort study of healthy aging in NSW. We are exploring the patient factors that are associated with receiving care, particularly an annual cycle of care for diabetes, and how this relates health outcomes as indicated by hospitalisation. The next stage of this research will include clinical measures of diabetes control using data from pathology companies and indicators of diabetes complications into the linked data collection. This is significant work that will enhance our understanding of the role of primary health care in improving population health outcomes.

Investigating best practice primary care for older Australians with diabetes using record linkage: a pilot study (NHMRC)

Research Team: **Elizabeth Comino**, Jeff Flack (SWSLHD), Marion Haas (UTS), Mark Harris, Bin Jalaludin (SWSLHD), Louisa Jorm (UWS), Gawaine Powell Davies, Kris Rogers (SAX Institute).

Optimising access to 'best practice' primary health care (APHCRI)

Research Team: **Elizabeth Comino**, Bettina Christl, John Furler (University of Melbourne), Marion Haas (UTS), Jane Hall (UTS), Mark Harris, Yordanka Krastev, Gawaine Powell Davies, Antony Raymont (Victoria University, NZ).

Relationship between 'best practice' primary care, health status, hospitalisation, and death for general practice patients with diabetes.

Research Team: **Elizabeth Comino**, Tom Chen, Jeff Flack (SWSLHD), Siaw-Teng Liaw, Mark Harris, Warwick Ruscoe (Southern Highlands DGP), Jane Taggart, Duong (Danielle) Tran.

UNDERSTANDING AND INTERVENING TO REDUCE HEALTH INEQUALITIES

Equity is a basic value of the Australian and NSW health systems. The equity stream is focused on identifying the causes of health inequity and developing individual, community and public policy level interventions to address health inequities. We work collaboratively with local, national and international researchers, internal and external to the health sector, in testing interventions and are presently concerned with undertaking Phase 4 research translation to embed research into policy and practice. The equity stream builds capacity in the sector to address health inequities through intensive experiential training programs and the Inequalities and Health and Health Impact Assessment Masters of Public Health units.

Early Childhood

Our research takes an ecological approach, focusing on the service and support needs of vulnerable and at risk families and recognising the need to address health inequities in the early years to safeguard the future health and development of children and families. We trial evidence-based interventions, monitor longer-term outcomes for vulnerable and at-risk children, and work with service providers to evaluate models of service delivery.

The Gudaga study is an eight year, longitudinal birth cohort study of the health, development and service use of Aboriginal children in Campbelltown, conducted in partnership with the local Tharawal Aboriginal community. We have partnered with leading education researchers to study the children's transitions to the early years of school, and will be auditing local child and family services to understand the relationships between child outcomes and the service context, and examining culturally appropriate practice and models of service delivery. Through the

Bulundidi Gudaga project we are also developing and trialling an Indigenous early childhood home visiting program, based on the MECOSH model.

The MECOSH program sustained nurse home-visiting program has led to improved maternal and child health and development outcomes for vulnerable families in south western Sydney. It is now being rolled out across Australia and is informing the development of health visiting policy and practice in the UK, with plans to trial it in both places. We are also working in a number of forums to develop more integrated models of service delivery.

Early childhood sustained home visiting: outcomes at 4 years and the transition to school (MECOSH II) (ARC Discovery Grant, NSW Health, Faculty of Medicine)

Research Team: **Elizabeth Harris**, **Lynn Kemp**, Teresa Anderson (SLHD), Sue Dockett (Charles Sturt University), Cathy Kaplun (PhD student, Charles Sturt University), Cathy McMahon (Macquarie University), Stephen Matthey (SWSLHD), Bob Perry (Charles Sturt University), Sheryl Scharke, Virginia Schmied (University of Western Sydney), Graham Vimpani (University of Newcastle), Siggi Zapart.

Health and development of Aboriginal infants in an urban environment (Gudaga II) (SWSLHD)

Research Team: **Elizabeth Comino**, **Jennifer Knight**, Cheryl Jane Anderson, Pippa Craig (Muru Marri Indigenous Health Unit, School of Public Health & Community Medicine, UNSW), Alison Derrett (SWSLHD), Francesca Garnett (ILP student), Elizabeth Harris, Mark Harris, Yoon Mei Ho (SWSLHD), Lisa Jackson Pulver (Muru Marri Indigenous Health Unit, SPHCM, UNSW), Bin Jalaludin (SWSLHD), Kelvin Kong, Lynn Kemp, Fakhra Maan, Jenny McDonald (SWSLHD), Sheryl Scharke, Peter Smith (Faculty of Medicine, UNSW), Jessica Wade (ILP), Vicki Wade (SWSLHD), Vana Webster, Darryl Wright (Tharawal Aboriginal Corporation).

Gudaga Goes to School – collection of the first round of data from the Gudaga Aboriginal child cohort as they enter school in 2011. (SWSLHD).

Research Team: as for Gudaga II plus Sue Dockett (Charles Sturt University), Melissa Haswell-Elkins (Muru Marri), Cathy McMahon (Macquarie University), Bob Perry (Charles Sturt University), Natasha West, Anna Williams.

Bulundidi Gudaga (Closing the gap: improving Aboriginal maternal and child health in Macarthur) (NHMRC)

Research Team: **Lynn Kemp**, **Rebekah Grace**, Trish Clark (SWSLHD), Elizabeth Comino, Elizabeth Harris, Mark Harris, Lisa Jackson Pulver, Jennifer Knight, John Lynch (University of SA), Jenny McDonald (SWSLHD), Cathy McMahon (Macquarie University), Vicki Wade (SWSLHD), Darryl Wright (Tharawal Aboriginal Corporation).

Sustained nurse home visiting: who benefits, why and how? (PhD study)

PhD Candidate: **Siggi Zapart**,
Supervisors: Lynn Kemp, Jenny Knight

Disadvantaged Communities and Populations

In 2011 we continued our focus on building the capacity of the health, community and social services sector workforce to address health inequities through the 'working in locationally disadvantaged communities' course, partnership work with organisations that address the social determinants of health (e.g. SWSLHD, local government, the Land and Housing Corporation and Family and Community Services) and supervision and mentoring of undergraduate and postgraduate research and practice students.

This capacity building work is complemented by evidence building in complex multi-sectoral interventions in large public housing estates through longitudinal research and the development of intervention models to inform public private partnerships. We have moved into a Phase 4 research translation stage with the vocationally oriented CBT-based training program to improve the health of people who are unemployed, focusing on the licensing of the intervention package and broad dissemination within the health, employment and social services sector.

Our previous research in this program has demonstrated the importance of community participation and linking social capital in health equity. Through the Community STaR project we provided local opportunities for skill development, employment and participation among people living in the disadvantaged communities in which we work.

Cognitive Behavioural Therapy (CBT) intervention for people who are unemployed. (Cabramatta Community Centre, SWSLHD)

Research Team: **Elizabeth Harris**, [Vanessa Rose](#), Joan Silk.

Evaluation of Community 2168 community regeneration intervention (Liverpool City Council, Housing NSW, SWSLHD)

Research Team: **Elizabeth Harris**, [Joan Silk](#), Lynn Kemp, Karen Larsen, Vanessa Rose and the Community 2168 Management Committee.

Community 2168 research and training hub (Liverpool City Council, NSW Department of Community Services, SWSLHD)

Research Team: **Vanessa Rose**, Elizabeth Harris, [Joan Silk](#).

Working in locationally disadvantaged communities: learning by doing program

Research Team: **Elizabeth Harris**, [Vanessa Rose](#), Lynn Kemp, Joan Silk.

Ten Most Disadvantaged Suburbs in South West Sydney (SWSLHD)

Research Team: **Elizabeth Harris**, Rachael Cousins (Social Work student, University of Sydney), Michelle Maxwell (SWSLHD), Vanessa Rose, Peter Sainsbury (SWSLHD), Joan Silk.

Equity and Healthy Public Policy

The Healthy Public Policy Stream continued its work in influencing public policy to improve health and health equity – conducting Health Impact Assessments on a range of proposals, teaching others to conduct HIA, and conducting research to evaluate the impact and effectiveness of HIA. Over the last decade the Stream has built sustained relationships within the health and other sectors (particularly housing and local government), contributed to the development of tools to support and expand health influence on public policy (particularly in urban planning), and has developed Health Impact Assessment as a structured method to increase positive impact of public policy on the health of populations, and on health equity.

The stream has also consolidated its work with the health sector (including Medicare Locals and LHDs) to expand the sector's commitment and capacity to contribute to health equity.

Progress in implementing the NSW healthy and Equity Statement in NSW (NSW Health)

Research Team: **Marilyn Wise**, Elizabeth Harris

The effectiveness of Health Impact Assessments Conducted in Australia and New Zealand (ARC)

Research Team: **Elizabeth Harris**, Fran Baum (Flinders), Andy Dannenberg University of Washington), Fiona Haigh, Ben Harris-Roxas B, Mark Harris, Helen Keleher (Monash), Lynn Kemp, Jeff Spickett (Curtin), Richard Morgan (Otago), Decharut Sukkumnoed (Healthy Public Policy Foundation, Thailand), Arthur Wendel (Centers for Disease Control, Atlanta)

Housing and Health Partnership (Population Health, South Western Sydney & Sydney Local Health Districts, NSW Health)

Research Team: **Patrick Harris**, Elizabeth Harris, Michelle Maxwell, John Pazsek (NSW Department of Housing), Peter Sainsbury (SWSLHD), Mark Thornell (SWSLHD).

Access and Equity to primary health care services: a discussion paper and web resources for Medicare Locals (GPNSW/AGPN)

Research Team: **Elizabeth Harris**, Gawaine Powell Davies

Equity-focused Health Impact Assessments on Medicare Locals' strategic plans (APHCRI)

Research Team: **Elizabeth Harris**, Fran Baum (Flinders University), Sarah Dennis, John Furler (University of Melbourne), Patrick Harris, Ben Harris-Roxas, Lynn Kemp, Angela Lawless (Flinders University), Marilyn Wise.



National appraisal of Continuous Quality Improvement initiatives in Aboriginal and Torres Strait Islander primary health care (the Lowitja Institute)

Research Team: **Marilyn Wise**, Sandy Angus Elizabeth Harris, Sharon Parker

Review of the literature on resources/tools for Aboriginal and Torres Strait Islander health promotion (the Lowitja Institute)

Research Team: **Marilyn Wise**, Sandy Angus, Elizabeth Harris, Sharon Parker.

Points of health influence in the Housing NSW Master Planning process (Population Health, South Western Sydney & Sydney Local Health Districts, NSW Health)

Research Team: **Patrick Harris**, Lynn Kemp, Mark Thornell (SWSLHD).

Working with local government to create healthy environments (Population Health, South Western Sydney & Sydney Local Health Districts, NSW Health)

Research Team: **Patrick Harris**

Influencing health and wellbeing considerations in EIA, and application in local government (Population Health, South Western Sydney & Sydney Local Health Districts, NSW Health)

Research Team: **Elizabeth Harris**, **Patrick Harris**, Harrison Ng Chok.

HIA Training and Support: Tropical Population Health Service. Far North Queensland. (Far North Queensland Health)

Research Team: **Patrick Harris**

HIA Short Course

Research Team: **Patrick Harris**, Fiona Haigh, Elizabeth Harris. Ben Harris-Roxas, Harrison Ng Chok, Marilyn Wise.

Development of a 5-10 year research strategic plan for the health and housing partnership (Population Health, South Western Sydney & Sydney Local Health Districts, NSW Health)

Research Team: **Elizabeth Harris**

Dissemination

The Centre's aim is to undertake research that makes a difference – to policy and health care provision, to professional and community groups and individuals. Here are some examples of how we linked our research to practice in 2011.

Making new interventions widely available. Our original trial showed that the MECSH (Miller Early Childhood Sustained Home-visiting) program improved child outcomes and parents' confidence, especially the most psycho-socially stressed. We are now testing whether the program can be implemented in new settings (in UK and Australia) with similar outcomes. If successful, the program may then be made available widely through a quality-assured licensing process.

Disseminating research results. After publishing the results of several trials of risk factor management in primary health care we distributed a summary of our research and held a seminar for service providers and policy makers to review the findings and discuss future directions. Our findings are now being used by NSW health and health services.

Teaching. Each year the Centre runs four masters programs (equity, health impact assessment, primary health care and chronic disease management) to share the results of our work with students. We also run a primary health care leadership development program. These expose future clinical and health care leaders to our work and keep us in touch with the realities of health services. The Centre also conducts commissioned short courses for industry specialist groups, again, exposing participants to our research findings directly and quickly.

Committee membership. This is unglamorous work, but it means that we can contribute to policy and service development on a continuing basis at national, state and local levels.

Working alongside. Some of our studies involve working alongside those who will use the results: for example teaching and conducting health impact assessments. This supports 'learning by doing'.

THE UNSW PRIMARY HEALTH CARE RESEARCH CAPACITY BUILDING INITIATIVE (RCBI)

In 2011, CPHCE received its final year of funding to support research development in Primary Health Care from the Australian Government Department of Health and Ageing.

In accordance with the national goals of the RCBI, the UNSW Research Capacity Building Program continued to focus on building a sustainable primary health care workforce as well as supporting high quality research across four regions - South West Sydney, Southern and South Eastern Sydney, Illawarra and Shoalhaven and Greater Murray.

The 2011 UNSW RCBI team included:

Nicholas Zwar	Program Director
Melanie Marshall	Program Manager and Primary Health Care Research Networks Coordinator Support in South East Sydney/ Illawarra and Shoalhaven/Greater Murray regions
Sarah Dennis	Senior Research Fellow, South West Sydney

The Research Capacity Building Initiative worked collaboratively with:

- GP Synergy Ltd;
- General Practice New South Wales LTD, (GP NSW);
- Divisions of General Practice within our regions.

The **Primary Health Care Research Network** (PHReNet) provides information and support to a broad membership, including general practitioners, staff of Divisions of General Practice, and community and allied health professionals. In 2011 PHReNet had 379 members and offered the following services: education in basic research skills, mentoring and support for early career researchers, research seminars, an Evidence Based Practice journal club, and writing support groups.

The **Practice Based Research Network**, PHReNet-GP, was launched at the end of 2007 as a subdivision of PHReNet, with a membership of 54 in 2011. PHReNet-GP is open to individual GPs, Divisions of General Practice and Research Training Providers interested in collaborating with or taking part in research projects with CPHCE. Ongoing research information is provided through the CPHCE website (www.cphce.unsw.edu.au) the PHReNetic newsletter and regular email alerts to PHReNet-GP members.

PHReNet-GP also provides members with the opportunity to be involved in UNSW led research projects, in piloting and developing projects or as project participants.

The Electronic Practice Based Research Network (ePBRN) connects PHReNet-GP practices, the General Practice Unit at Fairfield Hospital and other services such as Diabetes and Community Health Centres. The e-PBRN is being led by Professor Teng Liaw and allows the extraction and linking of patient information in a secure way that protects patient privacy. It will provide a platform for both research and improved patient care.

In 2011 the Electronic Practice Based Research Network (ePBRN) began testing and developing the infrastructure and tools to support the longer term aim of a network for 30 to 50 practices. Research was conducted into the quality of the data extracted from practice clinical systems and validating extraction and linkage software.

Key achievements

Education

- Two Introductory Research Skills workshops with 14 participants (Sarah Dennis).
- Two Evidence Based Practice Journal club meetings with 11 participants (Sarah Dennis).
- Two co-convened state-wide PHC short courses on research methods, with 24 participants (Sarah Dennis).
- PHReNet-GP evening research showcase – with 22 attendees (Presenters Nicholas Zwar, Siaw-Teng Liaw and Sarah Dennis)
- One research seminar (in conjunction with GP Synergy Ltd), with 16 participants.
- Five 3 hour research methods workshops for UNSW Health Service Alliance (Sarah Dennis 4, Elizabeth Denny-Wilson 1)

Mentoring and supervision

PHReNet provided active research support to its members. In addition, we continued to support the Academic Registrar positions at the GP Unit in Fairfield Hospital and in the School of Public Health and Community Medicine. In 2011 the program provided ongoing mentoring and support to the following projects.

Name and Degree	Project Title
Sue Kirby (PhD candidate and former RDP)	Do patient attitudes contribute to frequent readmissions?
Joel Rhee, (former Academic GP registrar, now PhD candidate)	Study of advanced care planning in the primary care context
Shona Dutton (PhD candidate and former RDP)	Feasibility and acceptability of two instruments for measuring physical activity in primary care
Sanjyot Vagholkar (PhD candidate)	Cardiovascular absolute risk assessment in general practice and impact on prescribing
Erin Miller (RDP)	Is it appropriate to use a standardised language test to assess the speech and language development of urban Aboriginal children?
Jacqueline Schroeder (RDP)	Describing models of emerging Australian integrated primary health care services
Alison Robinson (RDP)	Healthy 4 Life: a pilot study
John Widdup (former RDP)	Utilisation rates of early childhood services by Aboriginal infants within an urban population.
Della Maneze (former RDP)	The puppetry of integrated care: too many pulling the strings
Michael Tam	Beliefs, attitudes and behaviours of general practitioners and general practice registrars in the identification of alcohol use disorders, and the AUDIT-C tool: focus groups of GP teaching practices
Winston Lo	Views of General Practitioners and Allied Health Professionals of factors affecting collaborative patient care in the community
Janet Dubabin	A mixed methods study of patient anticipated responses to transient ischaemic attack symptoms

During 2011 we awarded over \$27,000 worth of funding, to early/mid career researchers, under the PHReNet small research grant scheme:

- Shona Dutton: *Feasibility and acceptability of two instruments for measuring physical activity (PA) in primary care*
- Joel Rhee: *Uptake and implementation of Advance Care Planning in Australia: findings of key informant interviews*
- Winston Lo: *Views of General Practitioners and Allied Health Professionals of factors affecting collaborative patient care in the community*
- Michael Tam: *Beliefs, attitudes and behaviours of general practitioners and general practice registrars in the identification of alcohol use disorders, and the AUDIT-C tool: focus groups of GP teaching practices*

Publications

Network members published fourteen journal articles and made twelve conference presentations during the year.

Researcher Development Program

This program funds placements for novice/early career researchers on existing research projects within the Centre, giving them the opportunity to develop their research skills with an experienced team of researchers.

In 2011, we extended one of the primary health care scholarships that were offered in 2010 and offered two further scholarships for 2011. These were:

- Alison Robinson 2010/11: *Healthy 4 Life: a pilot study*
- Erin Miller 2011: *Is it appropriate to use a standardised language test to assess the speech and language development of urban Aboriginal children?*
- Jacqueline Schroeder 2011: *Describing models of emerging Australian integrated primary health care services*

From 2012, future funding for capacity building in Primary Health Care will be provided through the Australian Primary Health Care Research Institute Centres of Research Excellence program. An important task for 2012 is to look for opportunities to sustain the progress made on research capacity building and maintain the structures such as the research networks that have been established through the capacity building program.

FELLOWSHIPS AND SCHOLARSHIPS

In 2011 staff members were awarded two research fellowships, one travelling fellowship and six PhD scholarships. The Centre also awarded top up scholarships to those on PhD scholarships of less than \$25,000. Other higher degree candidates are listed later in the report.

Fellowship	Recipient
NHMRC Senior Principal Research Fellowship	Mark Harris
NHMRC Training Fellowship – Addressing variations in the implementation of guidelines for preventive activities in general practice	Jane Lloyd
APHCRI Travelling Fellowship - Implementing nurse home visiting programs: opportunities in Australia and England	Lynn Kemp
APHCRI Travelling Fellowship – Preventive guidelines in primary health care and shared decision making	Yordanka Krastev
Scholarship	Recipient
NHMRC PhD Scholarship	* Patrick Harris
NHMRC PhD Scholarship	* Ben Harris-Roxas
NHMRC PhD Scholarship	* Julie McDonald
NHMRC Postgraduate Research Scholarship	* Heike Schütze
NHMRC Dora Lush Priority Scholarship	Anna Williams
NHMRC PhD Scholarship	Siggi Zapart

*Also received CPHCE top up for lower paying PhD scholarships





TEACHING

Our teaching within the Faculty of Medicine, elsewhere in UNSW and for other universities and organizations allows us to share current research with students and enables staff to develop and maintain their teaching experience. Below is a summary of teaching by Centre staff in 2011¹.

UNDERGRADUATE TEACHING

UNSW Medicine

Subject	Lecturer(s)
Health Maintenance B	Elizabeth Denney-Wilson (facilitator and guest lecturer)
Phase One Clinical Teaching	Jeremy Bunker, Siaw-Teng Liaw, Sanjyot Vagholkar (tutors).
Foundation Course	Mark Harris, Elizabeth Harris, Lynn Kemp, Vanessa Rose (lecturers).
Phase 2 Society and Health	Elizabeth Denney-Wilson (course tutorials), Sarah Dennis, Elizabeth Harris, Siaw-Teng Liaw, Mark Harris, Shane Pascoe, Vanessa Rose, Sanjyot Vagholkar (lecture, course tutorials), Anna Williams, Nicholas Zwar
Phase 3 primary care	Tim Shortus, Sanjyot Vagholkar, Siaw-Teng Liaw, Nick Zwar
Independent Learning Project – student placement	Mark Harris, Vanessa Rose (supervisors).

Other Undergraduate Teaching

Subject	Lecturer(s)
Health Impact Assessment, in Healthy Built Environments course, Faculty of the Built Environment	Patrick Harris, Marilyn Wise

¹ This does not include teaching by Profs. Nick Zwar or Siaw-Teng Liaw which is part of their substantive roles as a member of the School of Public Health and Community Medicine

POSTGRADUATE TEACHING

Master of Public Health Program, UNSW

MPH Electives run through CPHCE

Subject	Lecturer(s)
Inequalities in Health	Vanessa Rose (course co-ordinator), Elizabeth Comino, Fiona Haigh, Elizabeth Harris, Lynn Kemp, Marilyn Wise, Vanessa Rose (lecturer)
Delivery of Primary Health Services in the Community	Mark Harris, Gawaine Powell Davies, Julie McDonald (course co-ordinators) Nick Zwar, Marilyn Wise, Vanessa Rose (lecturers).
Health Impact Assessment	Patrick Harris (course co-ordinator), Fiona Haigh, Ben Harris-Roxas, Elizabeth Harris, Marilyn Wise (lecturers)
Chronic Disease Prevention and Management	Mark Harris, Nicholas Zwar, Rohan Jayasuriya (coordinators), Elizabeth Denney-Wilson, Sarah Dennis, Teng Liaw (lecturers)

Contributions to other MPH Courses

Subject	Lecturer(s)
Introduction to Public Health	Elizabeth Harris, Ben Harris-Roxas (lecturers)
Community Development	Vanessa Rose
Health Policy	Jane Lloyd

Other Undergraduate and Graduate Teaching

Subject	Lecturer(s)
Graduate Diploma/Masters in Mental Health, Institute of Psychiatry	Marilyn Wise (lecturer)
Non Communicable Disease Prevention and Control, Masters of International Studies/Masters of Public Health, University of Sydney	Mark Harris (lecturer)
Health promotion and advocacy. Sydney Graduate Medical Program, University of Sydney.	Marilyn Wise (lecturer)
Graduate Diploma in Indigenous Health (Substance Misuse), University of Sydney.	Marilyn Wise (lecturer)
Health Impact Assessment. Undergraduate 'Healthy Built Environments' Course, Faculty of the Built Environment	Patrick Harris
Environmental Health, Macquarie University	Ben Harris-Roxas (guest Lecturer)
Public Health Achievements and Challenges, Masters of Public Health, University of Sydney	Yordanka Krastev (Tutor/marker)

Other Teaching

Subject	Lecturer(s)
NSW PHC Research Capacity Building	Sarah Dennis (presenter and retreat supervisor).
Supervision of GP Registrars in Practice for GP Synergy	Sanjyot Vagholkar (supervisor), Jeremy Bunker (supervisor), Siaw-Teng Liaw (supervisor)
HIA short courses for NSW Health Public Health Officer trainees	Fiona Haigh, Patrick Harris
Leading in Primary and Community Health: 3-day course for middle managers from Local Health Districts and Divisions of General Practice	Gawaine Powell Davies, Julie McDonald (course coordinators and presenters)
Population Health master class for Medicare Locals (AGPN)	Gawaine Powell Davies, Julie McDonald

CPHCE also provided training through its PHReNet program as part of the Research Capacity Building Initiative (see earlier section).

RESEARCH STUDENTS

The Centre provides many opportunities for research students. In 2011 a total of 15 PhD students were enrolled at the Centre (including a number of CPHCE staff members). In addition, CPHCE staff co-supervise a number of students from other universities.

Name	Degree	Thesis Title	Supervisor Co-supervisor	Expected Completion
Abby Anderson	PhD (UNSW)	Evaluation of health assistants in general practice	Judy Proudfoot Mark Harris	2012
Barbara Booth	PhD (UNSW)	Quality improvement in general practice	Mark Harris' Nicholas Zwar	2012
Roy Dean	PhD (UNSW)	The effect of exogenous and endogenous shock on the secondary sex ratio in the Tasmanian community experience	Elizabeth Comino (co-supervisor)	Withdrew 2012
Shona Dutton	PhD (UNSW)	Quantifying physical activity behaviour in a primary care setting - an instrument for measuring physical activity change in general practice	Sarah Dennis, Mark Harris	2014
* Patrick Harris	PhD (UNSW)	Health impact assessment and public policy	Lynn Kemp, Peter Sainsbury	2013
* Ben Harris-Roxas	PhD (UNSW)	Equity focused health impact assessment (EFHIA) and the consideration of equity in policy development and implementation within the health system	Rosemary Knight then Pat Bazely. Lynn Kemp	2013
Elizabeth Jasprizza	PhD (UWS)	Men's access to community health services	John MacDonald, Vanessa Rose	2013
* Sue Kirby	PhD (UNSW)	Do patient attitudes contribute to frequent admissions?	Sarah Dennis, Mark Harris	2012
Patricia Knight	PhD (UNSW)	Road safety in rural young males	Mark Harris, Don Iverson	2013
*Julie McDonald	PhD (UNSW)	Collaboration between health professionals across organisational boundaries: a case study of diabetes	Mark Harris, Rohan Jayasuriya	2012
Suzanne McKenzie	PhD (UNSW)	Mental health and prevention of cardiovascular disease in general practice- impacts and interactions	Mark Harris, Gavin Andrews	2011
Joel Rhee	PhD (UNSW)	A study of advance care planning in the primary care context	Nicholas Zwar, Lynn Kemp	2012
* Heike Schütze	PhD (UNSW)	Cultural respect in general practice in Sydney	Mark Harris, Lisa Jackson Pulver	2013
Sanjyot Vagholkar	PhD (UNSW) Part-time	Cardiovascular absolute risk assessment in general practice and impact on prescribing	Nicholas Zwar, Mark Harris	2013
* Anna Williams	PhD (UNSW)	Integrating chronic illness self-management plans with primary care management: a clarification model of patient-provider care congruence.	Mark Harris, Patricia Bazeley	2013
Sue Woolfenden	PhD	Inequity in Developmental Vulnerability, its determinants and the role of access to prevention and early intervention services	Lynn Kemp, Valsa Eapen, Katrina Williams	2017
* Siggie, Zapart,	PhD (UNSW)	Effective sustained nurse home visiting: who benefits, why and how?	Lynn Kemp, Jenny Knight	2013

* CPHCE Staff enrolled in post-graduate study

PROFILE: PH.D STUDENT AND RESEARCH FELLOW

JULIE MCDONALD



My association with CPHCE goes back to 1996 when I was on the Advisory Committee of what was then the Centre for General Practice Integration Studies. I was director of QMS, a quality improvement and accreditation organisation for primary and community health services. After a decade with QMS I went out into consultancy, and during that time I did some work for CHETRE. This included coordinating the consultations and developing the discussion paper on equity-focussed PHC research priorities for the Health Inequalities Research Collaboration which was set up under Minister Woodridge.

I started working 4-days a week with CHETRE in 2003 on a 2-year project that fed into the development of the NSW Health Primary and Community Health Strategy. Much of my work since then for CPHCE has involved a mix of health services research, evaluation and teaching. This has included systematic reviews on models of comprehensive PHC and models of integrated PHC services, program evaluations and leadership development for emerging and established managers in primary and community health services.

For many years I've been interested in the challenges of achieving more accessible, integrated and comprehensive primary health care services in a system where primary care and community health services involve a complex mix of public and private sector arrangements, levels of government and professions and disciplines. This has been the focus of much of my work at CPHCE. I've been fortunate to have had the opportunity to undertake a PhD in this area while based at the centre and to receive a NHMRC Scholarship. The title of my PhD thesis (submitted in April 2012) was: collaboration between health professionals across organisational boundaries - a case study of diabetes.

Being based at the centre while undertaking my PhD has been of enormous benefit. Integration is a particular research focus of the centre, so I have had ready access to other researchers' expertise in addition to my supervisors'. Their encouragement, support and willingness to share their knowledge and wisdom has helped reduce the sense of isolation that is part of doing a PhD and highlight what my work adds to the knowledge pool. The CPHCE's credibility in the primary health care sector and reputation for doing relevant research helped considerably with recruitment.

Now that I'm looking at life post PhD, I'm having conversations with my colleagues about opportunities to take my research findings forward – do they contribute to the Centre's priorities and the research questions of interest in the current reform environment? Is there a continuing role I can play in the centre post PhD and most importantly, are there funding opportunities? So it is an uncertain but also an exciting time and I'm looking forward to seeing how the next chapter unfolds.

UNDERGRADUATE STUDENTS

CPHCE staff members also supervised a number of undergraduate research projects in 2011. These included three UNSW medical students undertaking Independent Learning Projects (ILPs).

Name	Research Topic	Supervisors
Rebecca Ainsworth	Photovoice	Vanessa Rose
Brittany Turner	A patient view of evidence-based guidelines for the prevention of chronic disease in General Practice	Mark Harris, Yordanka Krastev
Deborah Zhou	Improving implementation of preventive guidelines in general practice: case studies.	Mark Harris, Yordanka Krastev
* Erin Spike	Barriers to primary health care in refugees	Mark Harris

*Commenced 2010, completed 2011

PROFILE: INDEPENDENT LEARNING PROJECT STUDENT

ERIN SPIKE



I am currently in my fifth year of a Medicine/Arts degree at UNSW. I was initially drawn to CPHCE because I have a strong interest in the intersection between social justice and medicine. In particular, my Arts major of Development Studies furnished me with an interest in global health equity. One of the global health issues that is directly relevant to the Australian context is the health and wellbeing of refugees and asylum seekers, and I especially wanted to undertake research in this area. I was, therefore, very keen to take up the opportunity to work with Professor Mark Harris of CPHCE, due to his extensive research and practical experience in the field of asylum seeker health. I completed my independent learning project (ILP) under the supervision of Professor Harris and Dr Mitchell Smith of NSW Refugee Health Service, performing a qualitative study into the barriers faced by community-

based asylum seekers when accessing primary health care in Australia. Our research was subsequently published in the August 2011 issue of the Medical Journal of Australia. For me, the most fulfilling aspect of this experience was the fact that our research could be used as a basis for advocating improved access to health care for an extremely vulnerable and often overlooked group in our society. On a personal level, being accepted onto the 2011 UNSW Medicine Dean's List for my research was also highly rewarding.

CPHCE provided me with an extremely supportive environment in which to undertake my research and many staff members provided me with valuable advice and resources, particularly in terms of study design and the approach to data collection. CPHCE's strong focus on the social determinants of health is unique at UNSW and adds greatly to the diversity of research avenues available to students. The opportunity to undertake research in an area that is not narrowly biomedical has added a breadth to my degree which goes beyond that of the standard medical curriculum, and which I believe will enrich my future career. I am also very keen to pursue research in the future, and my experience at CPHCE has given me an excellent grounding in the fundamentals of the research process.



PARTNERS AND AFFILIATES

We collaborate with many different individuals and organisations. Some of our main partners in 2011 are listed below.

UNSW

- Faculty of the Built Environment
- Faculty of Medicine Lifestyle Clinic
Institute for Health Innovation: Centre for Clinical Governance and Centre for Health Informatics
School of Business
- School of Public Health and Community Medicine
- Social Policy Research Centre

Health departments

- Australian Government Department of Health and Ageing
- NSW Health

Health services

- Greater Southern Local Health District
- Hunter New England Local Health Dist
- Inala Aboriginal Health Service
- Northern Sydney Central Coast Local Health District

- Sydney South West Local Health District
- South Eastern Sydney and Illawarra Local Health District
- Sydney West Local Health District

Other government departments

- NSW Department of Community Services
- NSW Department of Housing

Local government

- Liverpool Council
- Western Sydney Regional Organisation of Councils

Australian universities and research institutes

- Australian Primary Health Care Research Institute, Australian National University
- Bond University
- Broken Hill University Department of Rural Health, University of Sydney
- Charles Sturt University
- Curtin University
- Flinders University

- The George Institute
- Ingham Institute for Applied Medical Research
- James Cook University
- Macquarie University
- Monash University
- Northern Rivers University Department of Rural Health, University of Sydney
- South Australian Community Health Research Unit, Flinders University
- University of Adelaide
- University of Melbourne
- University of Newcastle
- University of Otago
- University of Queensland
- University of Technology Sydney
- University of Western Sydney
- Woolcock Institute of Medical Research

Divisions of General Practice and Medicare Locals

National

- Australian General Practice Network

NSW

- GP New South Wales
- Bankstown Division of General Practice
- Central Coast Division of General Practice
- Central Sydney GP Network
- GP Network Northside
- Hawkesbury Hills Division of General Practice
- Hunter Rural Division of General Practice
- Macarthur Division of General Practice
- Northern Rivers General Practice Network
- NSW Outback Division of General Practice

- New England Division of General Practice
- North West Slopes Division of General Practice
- South Eastern Sydney Division of General Practice
- Southern Highlands Division of General Practice
- St George Division of General Practice
- Sutherland Division of General Practice
- Wentwest Ltd

Victoria

- General Practice Victoria

Queensland

- General Practice Queensland
- South East Alliance General Practice
- GP Partners

General Practice Training Organisations

- GP Synergy

Non government organisations

- Arthritis NSW
- Australian Indigenous Doctors' Association
- Australian Practice Managers' Association
- Australian Practice Nurse's Association
- BeyondBlue
- Cabramatta Community Health Centre
- Chinese Australian Services Society
- Chronic Illness Alliance
- Gandagara Aboriginal Health Service
- Liverpool Migrant Resource Centre
- MBF Foundation
- National Heart Foundation of Australia

- National Prescribing Service
- Royal Australian College of General Practitioners
- Tharawal Aboriginal Corporation

International

- Alberta Health Services
- Birkbeck College, London
- CDC Chronic Disease Prevention
- Centres for Disease Control, Atlanta
- China-Australia health and HIV/AIDS facility (CAHHF)
- Department of Family Medicine, University of Ottawa
- Edinburgh University
- Institut National de Santé Publique du Quebec
- International Union for Health Promotion and Education
- Kings College London
- Maastricht University
- Manchester University
- National Primary Care Research and Development Centre, University of Manchester, UK
- Robert Woods Johnston Medical School, New Jersey
- Thai Healthy Public Policy Foundation, Bangkok
- Thai Health System Research Institute, Bangkok
- University of British Columbia
- University of California (San Francisco)
- University of Central Lancashire
- University of Ottawa
- University of Sussex
- University of Washington



STAFF

49 staff were employed by the Centre in 2011, (34.5 full time equivalents at November 2011). All staff who worked at the Centre during 2011 (including long term casual staff) are listed below. Those with an asterisk have since left.

Title	First Name	Surname	Position Title
Mr	Raghib	Ahmad	Research Officer
Ms	Cheryl Jane	Anderson	Research Officer
Ms	Sandra	Angus	Research Officer
A/Prof	Pat	Bazeley	Associate Professor
Ms	Fiona	Byrne	Research Assistant
Dr	Bibiana	Chan	Research Fellow
Ms	Chih-Ching (Sunny)	Chang	Administrative Assistant
Dr	Huei-Yang (Tom)	Chen*	Research Officer
Ms	Bettina	Christl*	Research Officer
A/Prof	Elizabeth	Comino	Associate Professor
Ms	Ruth	Correy*	Research Officer
Dr	Elizabeth	Denney-Wilson*	Research Fellow
Dr	Sarah	Dennis	Snr Research Fellow
Dr	Nighat	Faruqi*	Research Officer
Ms	Sarah	Ford	Finance Manager
Dr	Rebekah	Grace	Senior Research Fellow
Dr	Fiona	Haigh	Senior Research Fellow
Mr	Patrick	Harris	Research Fellow
Dr	Elizabeth	Harris	Snr Research Fellow
Prof	Mark	Harris	Executive Director
Mr	Ben	Harris-Roxas*	Research Fellow
Mr	Iqbal	Hasan	Research Officer

Title	First Name	Surname	Position Title
Mr	Oshana	Hermiz	Research Officer
Mr	Fakhrul	Islam	Research Officer
Dr	Upali	Jayasinghe	Snr Research Fellow
Ms	Catherine	Kaplun	Research Associate
A/Prof	Lynn	Kemp	Associate Professor
Dr	Jenny	Knight	Snr Research Fellow
Dr	Yordanka	Krastev*	Research Fellow
Ms	Joanna	Lee*	Administrative Officer
Dr	Jane	Lloyd	Research Fellow
Ms	Fakhra	Maan	Administrative Officer
Dr	Melanie	Marshall*	UNSW PHCRED Manager
Ms	Julie	McDonald	Research Fellow
Ms	Suzan	Mehmet*	Administrative Officer
Mr	Harrison	Ng Chok	Research Officer
Dr	Shane	Pascoe*	Research Fellow
Ms	Sharon	Parker	Research Officer
A/Prof	Gawaine	Powell Davies	Chief Executive Officer
Ms	Alison	Robinson*	Research Officer
Dr	Vanessa	Rose	Research Fellow
Ms	Sheryl	Scharkie	Research Officer
Ms	Jacqueline	Schroeder*	NSW PHC Coordinator
Ms	Heike	Schütze	Research Officer
Ms	Jane	Taggart	Research Fellow
Ms	Duong (Danielle)	Tran	Research Officer
Ms	Rachel	Ward*	Research Officer
Ms	Vana	Webster	Research Officer
Ms	Natasha	West	Research Officer
Ms	Anna	Williams	Research Fellow
A/Prof	Marilyn	Wise	Associate Professor

Affiliated staff employed by the School of Public Health and Community Medicine

Siaw-Teng Liaw	Professor – also Director of the Fairfield Hospital General Practice Unit.
Joel Rhee	Lecturer
Nicholas Zwar	Professor of General Practice

Affiliated staff employed by Sydney South West Local Health District

Monica Aburto	Data Analyst
Emma Friesen	PCHRU Project Manager
Mary Knopp	Administration Officer
Joan Silk	Research Officer
Sanjyot Vagholkar	Staff Specialist, Conjoint Lecturer
Siggi Zapart	Research Officer

STAFF MEMBERSHIP OF EXTERNAL COMMITTEES

Committee	Name
Asia Pacific HIA Network	Ben Harris-Roxas
Australian Association for Academic General Practice Executive Committee	Sarah Dennis
Australia Primary Health Care Research Institute Knowledge Exchange Committee	Nicholas Zwar
Baker IDI NHMRC Diabetes Secondary Prevention Guideline Advisory Group	Mark Harris
Aust Health Informatics Education Council	Siaw-Teng Liaw
Central Sydney GP Network Board	Mark Harris
Coalition of Research into Aboriginal Health	Elizabeth Harris
Content Review Committee Medical Journal of Australia	Mark Harris
Department of Veterans Affairs: Coordinated Veterans Care Advisory Committee	Mark Harris
eHealth Informatics Journal Editorial Board	Siaw-Teng Liaw
Editorial Board, Australian Family Physician	Nicholas Zwar
Environmental Impact Assessment Review (Journal) Editorial Board	Ben Harris-Roxas
GP Synergy Board Director	Siaw-Teng Liaw
GP Synergy Supervisor Advisory Forum	Sanjyot Vagholkar
Heart Foundation Prevention in Practice Advisory Group	Gawaine Powell Davies, Rachel Laws
Health Informatics Conference Scientific Committee	Siaw-Teng Liaw
Heart Foundation Warning Signs NSW Reference Group	Sanjyot Vagholkar
Ingham Health Research Institute Scientific Advisory Committee	Lynn Kemp, Siaw-Teng Liaw
International: American Medical Informatics Association International Affairs Subcommittee	Siaw-Teng Liaw
International Association for Impact Assessment Health Section Leadership	Ben Harris-Roxas
International Association for Impact Assessment Publications Committee and Health Section	Patrick Harris
International Journal of Family Medicine Editorial Board	Siaw-Teng Liaw
International Union for Health Promotion and Education (IUHPE). Global Working Group on Health Impact Assessment.	Marilyn Wise
National Heart Foundation Clinical Issues Committee	Mark Harris
National Heart Stroke and Vascular Absolute Risk Guidelines Group	Mark Harris
NHMRC Obesity Guidelines Group	Mark Harris
National Prescribing Service Diagnostics Advisory Committee	Mark Harris
NSW Health Aboriginal and Population Health Priority Task Force	Nicholas Zwar
NSW Health Acute Care Taskforce	Siaw-Teng Liaw
NSW Health General Practice Council	Nicholas Zwar
NSW Health Keep Them Safe Evaluation Committee	Lynn Kemp
NSW Health Sustained Health Home-visiting Advisory Group	Lynn Kemp
NSW Transcultural Mental Health Centre Chinese Subcommittee	Bibiana Chan
Office for Aboriginal and Torres Strait Islander Health (OATSIH) Health@Home-plus National Reference Group	Lynn Kemp
Primary Health Care Research Information Service Strategic Advisory Group	Gawaine Powell Davies

Committee	Name
Public Health Association Public Health Research Advisory Group	Vanessa Rose
RACGP National Research Ethics Committee (Chair)	Siaw-Teng Liaw
RACGP National Standing Committee Research	Nicholas Zwar, Siaw-Teng Liaw
RACGP Quality Committee	Mark Harris
RACGP Red Book Task Force	Mark Harris
Research Administrative Committee, Westmead Breast Cancer Institute	Upali Jayasinghe
Society of Practitioners of Health Impact Assessment (SOPHIA) steering committee	Ben Harris-Roxas
SWSLHD Area Cancer Services Council	Sanjyot Vagholkar
SWSLHD Chronic, Aged and Complex Care Executive Committee	Siaw-Teng Liaw
SWSLHD Executive - Divisions of General Practice Liaison Committee	Sanjyot Vagholkar
SWSLHD Population Health Division Executive	Lynn Kemp
SWSLHD Population Health, Social Determinants of Health Committee	Vanessa Rose
SWSLHD Stroke Advisory Committee	Sanjyot Vagholkar
SW Growth Centre Integrated Primary Health Care Committee	Sanjyot Vagholkar
WHO Western Pacific Regional Office Thematic Working Group on Health Impact Assessment	Ben Harris-Roxas



FINANCIAL REPORT FOR YEAR ENDING 31/12/2011

	2011 Actuals \$	2010 Actuals \$
Income		
External Funds	4,274,945	3,625,741
UNSW Contribution - see note (i) & (ii)	661,952	654,216
Total Income	4,936,897	4,279,957
Expenses		
Payroll	3,271,450	3,379,952
Equipment	38,017	24,532
Materials	484,881	601,364
Travel	127,055	189,520
Total Expenses	3,921,403	4,195,368
Operating result	1,015,494	84,589
Surplus(Deficit) Bfwd from Prior Year	1,210,788	1,126,199
Adjustment Brought Forward (iii)	115,561	
Accumulated Funds Surplus	2,341,843	1,210,788
Unpaid invoices (iv)	121,202	

Notes to the Statement of Financial Performance

- i The Centre also recognises in-kind contributions provided to it that are not brought to account in the Statement of Financial Performance - this includes space occupied at Level 3 Building G27 - AGSM, Randwick
- ii Contribution to CPHCE salaries, i.e. Professor Mark Harris, Assoc Prof Lynn Kemp, Dr Jane Lloyd, Sunny Chang, Fiona Byrne, Upali Jayasinghe and Sarah Dennis, Fellowship Enhancement for Professor Mark Harris and Assoc Professor Lynn Kemp & NHMRC top-ups
- iii Adjustment due to error in calculation of operating result in 2010
- iv Unpaid invoices include GST



PUBLICATIONS

Chapter – Scholarly Research

Harris, P, Ritchie, J, Tabi, G. & Lower, T. (2011) Addressing the social determinants of alcohol use and abuse with adolescents in a Pacific Island country (Vanuatu). In Blas, E, Sommerfeld, J. & Sivasankara Kurup, A. (Eds.) *Social Determinants Approaches in Public Health: From Concept to Practice*. World Health Organization, Geneva, pp. 175-186.

Chapter – Other Research

Harris-Roxas, B, Maxwell, M, Thornell, M, Peters, S. & Harris, P. (2011) From description to action: using health impact assessment to address the social determinants of health. In Lavery, M. & Callaghan, L. (Eds.) *Determining the Future: A fair go & health for all*. Connor Court, Ballan, Vic, pp. 119-130.

Sainsbury, P, Harris, E. & Wise, M. (2011) The built environment as a social determinant of health. In Lavery, M. & Callaghan, L. (Eds.) *Determining the Future: A fair go & health for all*. Connor Court, Ballan, Vic, pp. 177-185.

Journal – Refereed & Scholarly Article

Chan, BC, & Ritchie, JE 2011, 'Perceptions of Chinese Australians on Seeking Help for Mental Health Problems: A Qualitative Study', *International Journal of Mental Health Promotion*, 13, pp. 36 - 45.

Chan, BC, Proudfoot, J, Zwar, NA, Powell Davies, PG, & et al, 2011, 'Satisfaction with referral relationships between general practice and allied health professionals in Australian primary health care', *Australian Journal of Primary Health*, 17, pp. 250 - 258.

Christl, B, Chan, BC, Laws, RA, Williams, AM, et al, 2011, 'Clients experience of brief lifestyle interventions by community nurses', *Australian Journal of Primary Health*, .

Christl, B, Lloyd, JE, Krastev, Y, Litt, J, & et al, 2011, 'Preventing Vascular Disease: Effective strategies for implementing guidelines in general practice', *Australian Family Physician*, 40, (10), pp. 825 - 828.

Craig, P, Knight, J, Comino, E, Webster, V, Jackson Pulver, L. & Harris, E. (2011) Initiation and duration of breastfeeding in an Australian Aboriginal community in south western Sydney. *Journal of Human Lactation*, 27, 250-261.

- de Lusignan S, Pearce C, Shaw N, Liaw ST, Michalakidis G, Vicente M, Bainbridge M. What are the barriers to conducting international research using routinely collected primary care data? *Stud Health Technol Inform.* 2011; 165:135-140. DOI 103233/978-1-60750-735-2-135 [P001049686]
- de Lusignan S, Liaw ST, Krause P, Curcin V, Vicente M, Michalakidis G, Agreus L, Leysen P, Shaw N, Mendis K. Key concepts to assess the readiness of data for International research: Data quality, lineage and provenance, extraction and processing errors, traceability, and curation. *IMIA Yearbook of Medical Informatics* 2011: pp 112-121. [P001049685]
- Dhanapalaratnam, R, Fanaian, M, & Harris, MF 2011, 'Lifestyle intervention - a study on maintenance in general practice'. *Australian Family Physician*, 40, pp. 903 - 905, 913.
- Furber, S, Tranter, D, Harris-Roxas, BF, Dews, C, et al, 2011, 'The use of Health Impact Assessment to determine the potential impact of an Australian Urban Development Proposal on Health and Well-Being', *Urban Policy and Research*, 29, pp. 125 - 139.
- Furler, J, Harris, MF, & Rogers, A 2011, 'Equity and long-term condition self-management', *Chronic Illness*, 7, pp. 3 - 5.
- Furler, J, Harris, E, Baum, F, Dixon, J, Lawless, A, Maceira, D, Nolen, L. B. & Starfield, B. (2011) An International Society and Journal for Equity in Health: 10 years on. *International Journal for Equity in Health*, 10: 11.
- Gunning, C, Harris, PJ, & Mallett 2011, 'Assessing the health equity impacts of regional land-use plan making: An equity focussed health impact assessment of alternative patterns of development of the Whitsunday Hinterland and Mackay Regional Plan, Australia (Short report)', *Environmental Impact Assessment Review*, 31, pp. 415 - 419.
- Harris, E, Stewart, D, Harris, N, & Ritchie, JE 2011, 'Understanding workforce participation as a continuous rather than dichotomous variable: Implications for improving workforce health', *Australian and New Zealand Journal of Public Health*, 35, pp. 190 - 194.
- Harris, MF, Jayasinghe, UW, Taggart, J, Christl, B, et al, 2011, 'Multi-disciplinary Team Care Arrangements in the management of patients with chronic disease in Australian general practice. *Medical Journal of Australia*, 194, pp. 236 - 239.
- Harris, MF, Jayasinghe, UW, Chan, BC, Proudfoot, J, et al, 2011, 'Patient and practice characteristics predict the frequency of general practice multidisciplinary referrals of patients with chronic diseases: A multi-level study', *Health Policy*, 101, pp. 140 - 145.
- Harris, MF, Zwar, NA, Walker, C, & Knight, S 2011, 'Strategic approaches to the development of Australia's future primary care workforce', *Medical Journal of Australia*, 194, pp. S88 - S91.
- Harris, MF, Fanaian, M, Jayasinghe, UW, Passey, M, et al, 2011, 'What predicts patient reported GP management of smoking, nutrition, alcohol, physical activity and weight behaviours?' *Australian Journal of Primary Health*, 2012, 18(2), pp. 123 - 128.
- Harris, PJ, & Spickett, J 2011, 'Health impact assessment in Australia: A review and directions for progress', *Environmental Impact Assessment Review*, 31 (4), pp. 425 - 432.
- Harris-Roxas, BF, Harris, PJ, Harris, E, & Kemp, LA 2011, 'A rapid equity focused health impact assessment of a policy implementation plan: An Australian case study and impact evaluation', *International Journal for Equity in Health*, 10(1) (6), pp. 1 - 12.
- Harris-Roxas, BF, & Harris, E 2011, 'Differing forms, differing purposes: A typology of Health Impact Assessment', *Environmental Impact Assessment Review*, 31 (4), pp. 396 - 403.
- Hashimoto-Govindasamy, L, & Rose, VK 2011, 'An ethnographic process evaluation of a community support program with Sudanese refugee women in western Sydney', *Health Promotion Journal of Australia*, 22 (2), pp. 107 - 112.
- Jeon, Y, Sansoni, J, Low, L, Chenoweth, L, et al, 2011, 'Recommended measures for the assessment of behavioral and psychological symptoms of dementia (BPSD)', *American Journal of Geriatric Psychiatry*, 19, pp.403 - 415.
- Jones, RA, Sinn, N, Campbell, KJ, Hesketh, KD, et al, 2011, 'The importance of long-term follow-up in child and adolescent obesity prevention interventions', *International Journal of Pediatric Obesity*, 6 (3-4), pp. 178 - 181.
- Kang, E, Lee, Y, Harris, PJ, Koh, K, & et al, 2011, 'Health impact assessment in Korea', *Environmental Impact Assessment Review*, 31 (4), pp. 438 - 440.
- Kemp, LA, Harris, E, McMahon, C, Matthey, S, et al, 2011, 'Child and family outcomes of a long-term nurse home visitation program: a randomised controlled trial', *Archives of Disease in Childhood*, 96 (6), pp. 533 - 540.
- Kirby, SE, Dennis, SM, Jayasinghe, UW, & Harris, MF 2011, 'Frequent emergency attenders: is there a better way?' *Australian Health Review*, 35(4), pp. 462 - 467.

- Kirby, SE, Dennis, SM, Bazeley, P, & Harris, MF 2011, 'What distinguishes clinicians who better support patients for chronic disease self-management?' *Australian Journal of Primary Health*, Online 2 December 2011.
- Krastev, Y 2011, 'Institutionalisation of Bulgarian ethics committees: history and current status', *Indian Journal of Medical Ethics*, 8 (3), pp. 148 - 151.
- Krastev, Y, Grimm, M, & Metcalfe, AW 2011, 'Research governance and change in research ethics practices at a major Australian university', *Monash Bioethics Review*, 29 (4), pp. 16.1 - 16.7.
- Liaw, ST 2011, 'HoMER: An opportunity or threat to general practice research?' *Australian Family Physician*, 40, pp. 1016 - 1017.
- Liaw ST, Chen HY, Maneze D, Taggart J, Dennis S, Vagholkar S, Bunker J. Health reform: is current electronic information fit for purpose? *Emergency Medicine Australasia* 2011 (Sep): (doi: 10.1111/j.1742-6723.2011.01486.x) [P001055927]
- Liaw ST. Computerised decision support in general practice – a research journey. *Aus Fam Physician* 2011; 40 (9): 711 [P001055928]
- Liaw ST, Lau P, Pyett P, Furler J, Burchill M, Rowley K, Kelaher M. Successful chronic disease care for Aboriginal Australians requires cultural competence. *Aust NZ J Public Health* 2011: 238-248. [P000875836]
- Magin, PJ, Marshall, M J, Goode, SM, Cotter, GL, et al, 2011, 'How generalisable are results of studies conducted in practice-based research networks? A cross-sectional study of general practitioner demographics in two New South Wales networks', *Medical Journal of Australia*, 195, pp. 210 - 213.
- Marsh, H, Jayasinghe, UW, & Bond, NW 2011, 'Gender differences in peer reviews of grant applications: A substantive-methodological synergy in support of the null hypothesis model', *Journal of Informatics*, 5 (1), pp. 167 - 180.
- McDonald, J, Powell Davies, PG, Jayasuriya, RA, & Harris, MF 2011, 'Collaboration across private and public sector primary health care services: benefits, costs and policy implications', *Journal of Interprofessional Care*, Epub ahead of print - 9 May.
- McDonald, J, Jayasuriya, R, & Harris, MF 2011, 'Primary health care service delivery networks for the prevention and management of Type 2 diabetes: using social network methods to describe inter-organisational collaboration in a rural setting', *Australian Journal of Primary Health*, 17, pp. 259 - 267.
- McKenzie, SH, Jayasinghe, UW, Fanaian, M, Passey, M, et al, 2011, 'Socio-demographic factors, behaviour and personality: associations with psychological distress'. *European Journal of Preventive Cardiology*, 19, pp. 250 -257.
- Rhee, J, Zwar, NA, & Kemp, LA 2011, 'How is advance care planning conceptualised in Australia? Findings from key informant interviews', *Australian Health Review*, 35, pp. 197 - 203.
- Saan, H, & Wise, M 2011, 'Enable, mediate, advocate', *Health Promotion International*, 26, pp. ii187 - ii193.
- Schmied, V, Kruske, S, Kemp, LA, Fowler, C, et al, 2011, 'Commonalities and challenges: A review of Australian State and Territory maternity and child health policies', *Contemporary Nurse*, 40 (1), pp. 106 - 117.
- Schutze, H, Rix, E, Laws, RA, Passey, M, et al, 2011, 'How feasible are lifestyle modification programs for disease prevention in general practice?' *Australian Journal of Primary Health*, 2012, 18(2), pp. 129 - 137.
- Spike, E, & Harris, MF 2011, 'Access to primary health care services by community -based asylum seekers', *Medical Journal of Australia*, Aug 15 195 (4), pp. 188 - 191.
- Taggart, J, Chan, BC, Jayasinghe, UW, Christl, B, et al, 2011, 'Patients assessment of chronic illness care (PACIC) in two Australian studies: Structure and utility', *Journal of Evaluation in Clinical Practice*, 17, pp. 215 - 221.
- Tamburrini, A, Gilhuly, K, & Harris-Roxas, BF 2011, 'Enhancing benefits in health impact assessment through stakeholder consultation', *Impact Assessment and Project Appraisal*, 29 (3), pp. 195 - 204.
- Vaidya, R, Pandya, KV, Denney-Wilson, E, & Harris, MF 2011, 'Sustaining cardiovascular absolute risk management in Australian general practice', *Australian Journal of Primary Health*, online 7 Dec 2011.
- Van der Pligt, P, Campbell, K, Willcox, J, Opie, J, & et al, 2011, 'Opportunities for primary and secondary prevention of excess gestational weight gain: General Practitioners' perspectives', *BMC family practice*, 12:124 (4 November 2011).
- Williams AM, Dennis S, Harris MF (2011). How effective are the linkages between self-management programmes and primary care providers, especially for disadvantaged patients? *Chronic Illness* 7, 20-30

Zwar, N, Harris, MF, & Denney-Wilson, E 2011, 'Cardiovascular absolute risk assessment: a research journey in general practice', *Australian Family Physician*, 40, p. 309.

Zwar, NA, Richmond, RL, Forlonge, G, & Hasan, I 2011, 'Feasibility and effectiveness of nurse-delivered smoking cessation counselling combined with nicotine replacement in Australian general practice', *Drug and Alcohol Review*, 30, pp. 583 - 588.

Zwar, NA, Marks, GB, Hermiz, OS, Middleton, S, et al, 2011, 'Predictors of accuracy of diagnosis of chronic obstructive pulmonary disease in general practice', *Medical Journal of Australia*, 195, pp. 168 - 171.

de Lusignan, S, Liaw, ST, Krause, P, Curcin, V, et al, 2011, 'Key Concepts to Assess the Readiness of Data for International Research: Data Quality, Lineage and Provenance, Extraction and Processing Errors, Traceability, and Curation.' *IMIA Yearbook of Medical Informatics 2010*, 6, pp. 112 - 120.

Journal – Other Refereed Article

Krastev, Y 2011, 'An overview of the Australian health care system', *Lijn* 1, 9(3), pp. 14 - 15.

Journal – Non Refereed Article

Harris, MF, Furler, JS, Mercer, SW, & Willems, SJ 2011, 'Equity of Access to Quality of Care in Family Medicine - Editorial', *International Journal of Family Medicine*, 2011 ID 858131, pp. 1 - 2.

Harris-Roxas, BF 2011, 'Health Impact assessment in the Asia Pacific (Editorial)', *Environmental Impact Assessment Review*, 31 (4), pp. 393 - 395.

Lloyd, JE, & Wise, M 2011, 'Improving Aboriginal health: How might the health sector do things differently? [Digest article]', *Australian Journal of Public Affairs*, pp. Online.

Journal – Letter or Note

Comino, EJ, Jackson Pulver, L, & Knight, J 2011, 'The health of urban Aboriginal people: insufficient data to close the gap', *Medical Journal of Australia*, 194, p. 270.

Harris, MF, Pascoe, S, Crossland, LJ, Beilby, J, et al, 2011, 'Referral pathways in colorectal cancer: findings from a qualitative study in general practice', *Medical Journal of Australia*, 195, pp. 178 - 179.

Katellaris, A, & Harris, MF 2011, 'The profession calls for humane treatment of asylum seekers', *Medical Journal of Australia*, 195 (6), p. 309.

Krastev, Y 2011, 'What role do research ethics committees play in Bulgarian clinical trial research?' *Australasian Medical Journal*, 4 (8), pp. 460 - 462.

Rose, V, Harris, E, Comino, E, Anderson, T, & Harris, M. (In Press 2012 Available Online) GP and community nurse co-location in a disadvantaged community [letter to the editor]. *Australian Journal of Primary Health*, Submitted 11 Feb 2011 (special edition); Accepted 5 Sep 2011; Available online 15 Nov 2011.

Conference – Full Paper Refereed

Harris, MF, Mazza, D, Russell, G, Christl, B, et al, 2011, 'Barriers and facilitators to implementation of chronic disease prevention guidelines in Australian general practice', *G-I-N 2011 Conference: Linking Evidence Policy and Practice*, Seoul, South Korea, 28-31 August, 2011.

Harris, MF, Mazza, D, Krastev, Y, Christl, B, et al, 2011, 'Implementation of preventive guidelines in Australian general practice - barriers and facilitators', *2011 Primary Health Care Research Conference*, Brisbane, Australia, 13-15 July, 2011.

Krastev, Y, Shortus, T, & Harris, MF 2011, 'Balance between evidence based guidelines and shared decision making in preventive care', *6th International Shared Decision Making Conference: Bridging the gap between research and practice: patient pull or clinician push?*, Maastricht, Netherlands, 19-22 June, 2011.

Liaw, ST, Taggart, J, Dennis, SM, & Yeo, AET 2011, 'Data quality and fitness for purpose of routinely collected data - a case study from an electronic Practice-Based Research Network (ePBRN)', *AMIA Annual Symposium*, Washington DC, October 22 - October 26, 2011.

de Lusignan, S, Pearce, C J, Shaw, N, Liaw, ST, et al, 2011, 'What are the Barriers to Conducting International Research Using Routinely Collected Primary Care Data?', *EFMI Special Topic Conference 2011*, Lako, Slovenia, 14-15 April 2011.

Anna Williams, Eloise Buggy, Leah Bloomfield, Diana Aspinall, Therese Wellsmore, Nicholas Manolios, Mark Harris. Evaluation of Moving On: an Australian designed generic self-management program for people with a chronic illness. Primary Health Care Research Conference 12-15 July 2011, Brisbane.

Conference – Full Paper, Not Refereed

Comino, E. (2011) Primary care data: opportunities and limitations for health services research. In Hall, J, Cumming, J. & Haas, M. (Eds.) *Celebrating the Achievements of Health Services Research in Australia and New Zealand 2001-2011*. Health Services Research Association of Australia and New Zealand (HSRAANZ), Sydney, pp. 14-15.

Williams, AM, Buggy, E, , Aspinall, D, et al, 2011, 'Evaluation of Moving On: an Australian designed generic self-management program for people with a chronic illness', *PHC Research Conference*, Brisbane, QLD, Australia, 13-15 July 2011.

Conference – Abstract Only

Denney-Wilson, E, Vagholkar, S, Schutze, H, & Harris, MF 2011, 'Cardiovascular absolute risk assessment (CVAR) versus single risk factor measurement to guide CVD risk management: potential for huge savings to the health care system', *Primary Health Care Research Conference*, Brisbane, Australia, 13-15 July 2011.

Jayasinghe, UW, & Harris, MF 2011, 'Quality of Life of Australian Chronically-ill Adults: Smoking Has More Effect on Females than Males', *The 10th Annual International Conference on Health Economics, Management and Policy*, Athens, 27-30 June 2011.

McCormack, D, Hogan, A.M, Marshall, M J, Ibrahim, S, et al, 2011, 'Wake-Up to Sleep Apnoea Syndrome in Patients Undergoing CABG', *The Society for Cardiothoracic Surgery Annual Meeting*, London, 20-22 March 2011.

McDonald, J 2011, 'Interprofessional collaboration across organisational settings: a wicked problem', *North American Primary Care Research Group*, Banff, Canada, 14-16 Nov 2011.

Bucks, R, Olaithe, M, & Marshall, M, 2011, 'Self-reported Memory Function in a Community Sample: More Sleep Difficulties Lead to Lower Memory Ability (Self-appraisal of Ones Memory Capabilities)', *Australasian Sleep Association and Australasian Sleep Technologists Association 23rd Annual Scientific Meeting*, Sydney, Australia, 27-29 October 2011.

Robinson, A, Laws, RA, Harris, MF, & Denney-Wilson, E 2011, 'Accessible, feasible and universal child obesity prevention by nurses in general practice: The Healthy 4 Life pilot study', *Dieticians' Association of Australia 29th National Conference*, Adelaide Convention Centre, Adelaide, Australia, 26-28 May 2011.

Schutze, H, Rix, E, Passey, M, Laws, RA, et al, 2011, 'The feasibility of lifestyle modification programs to prevent vascular disease in general practice: findings from the HIPS study', *2011 Primary Health Care Research Conference*, Brisbane, Australia, 13-15 July, 2011.

Conference – Presentation, not Published

Comino, EJ, & Craig, P 2011, 'The Gudaga Study: Breastfeeding', *Aboriginal Child Health Symposium*, Mt Annan, 10-11 May.

Comino, EJ, & Knight, J 2011, 'The Gudaga Study: Creating Effective Partnerships to Enable Translation of Research Findings into Practice', *3rd Aboriginal Health Research Conference: 'Research for a Better Future'*, Sydney, 5-6 May.

Comino, EJ 2011, 'The Gudaga Study: Describing the health, development & service use of Aboriginal children in an urban setting', *Aboriginal Child Health Symposium*, Mt Annan, 10-11 May.

Comino EJ 2011. Relationship between clinical control of diabetes and hospitalisation for general practice patients with diabetes: a data linkage study, Ingham Institute for Applied Medical Research 6th Annual Research & Teaching Showcase "Improving the health and wellbeing of the South West", Thomas & Rachel Moore Education Centre, Liverpool Hospital, 2 December.

Filewood L, Schütze H, Dahlstrom V, Wade V, Stewart J, Lau P, Jackson Pulver L, Harris M, Liaw ST. Embedding cultural respect in practice. Ingham Institute for Applied Medical Research 6th Annual Research & Teaching Showcase "Improving the health and wellbeing of the South West", Thomas & Rachel Moore Education Centre, Liverpool Hospital, 2 December 2011.

Grace, R 2011, 'A Collaborative Research Project: Exploring the efficacy of a newly established integrated service for children, families and service staff', *Newpin Conference*, Uniting Care Burnside, Sydney, 7 April.

Grace, R 2011, 'Gudaga Goes to School: Understanding the health, development, service use and learning of Aboriginal children in an Urban Environment', *Aboriginal Child Health Symposium*, Mt Annan, 10-11 May.

Grace, R, Comino, EJ, Knight, J, Webster, VK, & et al, 2011, 'The Gudaga Study: Descriptive research informing delivery of health services for urban Aboriginal infants and their mothers', *Advances in Public Health and Health Services Research at UNSW (School of Public Health and Community Medicine)*, The John Niland Scientia Building, UNSW, 5 August.

- Harris, E 2011, 'A watched pot never boils: Building a research agenda takes time', Ingham Institute for Applied Medical Research 6th Annual Research & Teaching Showcase "Improving the health and wellbeing of the South West", Thomas & Rachel Moore Education Centre, Liverpool Hospital, 2 December.
- Harris, E 2011, 'What the chicken money bought: Establishing the Aboriginal Home Visiting Program in SWS', *Aboriginal Child Health Symposium*, Mt Annan, 10-11 May.
- Harris, P, Carless, F, Gunning, C. A Health Impact Assessment of the Mackay Residential Densities Strategy. The Local Government Researchers Forum, 14-15th December 2011, Sydney, UTS.
- Harris, P, Sainsbury, P, Kemp, L. The relationship between health impact assessment and healthy public policy: some initial, descriptive, findings. IAIA 11 – International Association for Impact Assessment. 31st Annual Conference, 31 May to 3 June 2011, Puebla, Mexico.
- Harris, P, Ng Chok, H, Wise, M, Harris-Roxas, B, Harris, E. The role of local government in Major Project Environmental Assessment in the Sydney Metropolitan Region: opportunities for health. IAIA 11 – International Association for Impact Assessment. 31st Annual Conference, 31 May to 3 June 2011, Puebla, Mexico.
- Kemp, LA 2011, 'Bulundidi Gudaga: improving the health of Aboriginal infants in Campbelltown', *Aboriginal Child Health Symposium*, Mt Annan, 10-11 May.
- Knight, J 2011, 'SIDS and urban Aboriginal infants', *Aboriginal Child Health Symposium*, Mt Annan, 10-11 May.
- Liaw ST. General practice and its role in cancer research. Ingham Institute for Applied Medical Research 6th Annual Research & Teaching Showcase "Improving the health and wellbeing of the South West", Thomas & Rachel Moore Education Centre, Liverpool Hospital, 2 December 2011.
- McDonald, J 2011, 'Leadership for primary health care: building capacity of primary and', *Primary Health Care Research Conference*, Brisbane, Australia, 13-15 July 2011.
- McDonald J, Comino E. The Gudaga Study: Developmental results at 12 months and 3 years. *Aboriginal Child Health Symposium*, Mt Annan, 10-11 May.
- Miller, Erin, & Comino, EJ 2011, 'The use of standardisation language assessment tools to measure the language development of urban Aboriginal preschoolers', *Ingham Institute for Applied Medical Research 6th Annual Research & Teaching Showcase "Improving the health and wellbeing of the South West"*, Thomas & Rachel Moore Education Centre, Liverpool Hospital, 2 December.
- Rahimi AR, Liaw ST, Ray P, Taggart J, Dennis S, Yeo A, de Lusignan S. Data quality in health care – a realist literature review. Ingham Institute for Applied Medical Research 6th Annual Research & Teaching Showcase "Improving the health and wellbeing of the South West", Thomas & Rachel Moore Education Centre, Liverpool Hospital, 2 December 2011.
- Robinson, A, Laws, RA, Harris, MF, & Denney-Wilson, E 2011, 'Prevention in Primary Health Care: Investigating practice nurse attitudes, behaviours and self-efficacy', *Primary Health Care Research Conference*, Brisbane, Australia, 13-15 July 2011.
- Robinson, P, Comino, EJ, Forbes, A, Webster, VK, & et al, 2011, 'Timeliness of antenatal care for mothers of Aboriginal and non-Aboriginal infants in an urban setting', *Aboriginal Child Health Symposium*, Mt Annan, 10-11 May.
- Rose, VK 2011, 'Community education and capacity building in disadvantaged communities', *3rd Annual National Community Education Programs Forum 2011*, Melbourne, 23-24 February.
- Rose, VK, & Harris, E 2011, 'Long-term evaluation of a complex community intervention in a disadvantaged community', Ingham Institute for Applied Medical Research 6th Annual Research & Teaching Showcase "Improving the health and wellbeing of the South West", Thomas & Rachel Moore Education Centre, Liverpool Hospital, 2 December.
- Tran, DT, Comino, EJ, Harris, MF, Haas, M, et al, 2011, 'The 45 and up study: Validating self reported Diabetes Mellitus Status', *Ingham Institute for Applied Medical Research 6th Annual Research & Teaching Showcase "Improving the health and wellbeing of the South West"*, Thomas & Rachel Moore Education Centre, Liverpool Hospital, 2 December.
- Webster, VK, Comino, EJ, Knight, J, Jackson Pulver, L, et al, 2011, 'Birth outcomes', *Aboriginal Child Health Symposium*, Mt Annan, 10-11 May.
- Widdup, J, Comino, EJ, & Webster, VK 2011, 'Universal health home visiting: Evaluating access and equity', *Aboriginal Child Health Symposium*, Mt Annan, 10-11 May.
- Wise, M 2011, The role of integrated impact assessment. *HIA '11 Conference*, IAIA. Granada, Spain. 14-15 April.

Wise, M 2011, 'What is the role of Medicare Locals in prevention, social determinants and community development?' *AGPN National Forum - "Transforming for success" - Building on strengths, embracing partnerships*, Melbourne, 16-19 November.

Conference – Poster

Denney-Wilson, E 2011, 'Rapid weight gain in infancy and overweight at 2 years in a birth cohort of urban Aboriginal children', *Ingham Institute for Applied Medical Research 6th Annual Research & Teaching Showcase "Improving the health and wellbeing of the South West"*, Thomas & Rachel Moore Education Centre, Liverpool Hospital, 2 December.

Grace, R 2011, 'Gudaga goes to school: the next stage of the Gudaga Study', *Ingham Institute for Applied Medical Research 6th Annual Research & Teaching Showcase "Improving the health and wellbeing of the South West"*, Thomas & Rachel Moore Education Centre, Liverpool Hospital, 2 December.

Knight, J, Grace, R, Webster, VK, Comino, EJ, & et al, 2011, 'The Gudaga Story: Building relationships to support improved Aboriginal child health outcomes', *3rd Aboriginal Health Research Conference: 'Research for a Better Future'*, Sydney, 5-6 May.

Ng Chok, Harrison, Harris, PJ, Wise, M, & Kemp, LA 2011, 'A review of Part 3A Major Project Activity in the South-West Sydney region: What planning reforms mean to local government and are there opportunities for health?', *Ingham Institute for Applied Medical Research 6th Annual Research & Teaching Showcase "Improving the health and wellbeing of the South West"*, Thomas & Rachel Moore Education Centre, Liverpool Hospital, 2 December.

Parab, Chitra, & Comino, EJ 2011, 'Middle ear health of urban Aboriginal three year olds', *Ingham Institute for Applied Medical Research 6th Annual Research & Teaching Showcase*, Thomas & Rachel Moore Education Centre, Liverpool Hospital, 2 December.

Tran, DT, Comino, EJ, Harris, MF, Jorm, L, et al, 2011, 'Diabetes type 2 risk factors, management and health service use according to remoteness of residence', *Ingham Institute for Applied Medical Research 6th Annual Research & Teaching Showcase "Improving the health and wellbeing of the South West"*, Thomas & Rachel Moore Education Centre, Liverpool Hospital, 2 December.

Tran, DT, Comino, EJ, Harris, MF, Jorm, L, et al, 2011, 'Diabetes type 2 risk factors, management and health service use according to remoteness of residence', *7th Health Services and Policy Research Conference*, Adelaide, 5-7 December.

Webster, VK 2011, 'Developmental progress in urban Aboriginal Children at 3 years of age', *Ingham Institute for Applied Medical Research 6th Annual Research & Teaching Showcase "Improving the health and wellbeing of the South West"*, Thomas & Rachel Moore Education Centre, Liverpool Hospital, 2 December.

Williams, AM, Bazeley, P, & Harris, MF 2011, 'Patient and provider views on self-management planning and support: rhetoric versus reality?' *PHC Research Conference*, Brisbane, QLD, Australia, 13-15 July 2011.

Reports

Baker, P, Aitsi-Selmi, A, Siegel, K, Kishore, S, Tran, K, Grover, B, Hassell, C, Hassell, T, Johnson, S, Pace-Bass, L, Adams, H, Platon, I, Webber, S, Dossou, J. P, Hamley, P, Carah, N. & Harris-Roxas, B. (2011) *Advocating for Action on Non-Communicable Diseases: Leveraging technology and social media*. Young Professionals Chronic Disease Network and Healthy Caribbean Coalition, Boston, Massachusetts, USA. Available at <http://www.ypchronic.org/sites/default/files/ICTs%20Social%20Media%20and%20NCDs.pdf>

Centre for Health Equity Training Research and Evaluation (2011) *The Gudaga Study: The story so far*. Centre for Health Equity Training Research and Evaluation, part of the Centre for Primary Health Care and Equity, Faculty of Medicine, University of NSW, Sydney.

Haigh, F, Ng Chok, H. & Harris, P. (2011) *Housing density and health: A Review of the literature and health impact assessments*. Centre for Health Equity Training Research and Evaluation, part of the Centre for Primary Health Care and Equity, Faculty of Medicine, University of NSW, Sydney.

Harris-Roxas, B. (2011) *Health. International Association for Impact Assessment (IAIA)*, Fargo, North Dakota. (Key Citations Series, editor Vanclay, F).

Kemp, L, Harris, E, McMahon, C, Matthey, S, Vimpani, G, Anderson, T, Schmied, V. & Aslam, H. (2011) *Maternal Early Childhood Sustained Home-visiting (MECSH) Program Description*. Centre for Health Equity Training Research and Evaluation, part of the Centre for Primary Health Care and Equity, School of Public Health and Community Medicine, University of NSW, Sydney.

CONTACT US

Randwick Centre

Executive Director: Professor Mark Harris
UNSW SYDNEY NSW 2052
Tel: +61 2 9385 8384 **Fax:** +61 2 9385 1513
Email: m.f.harris@unsw.edu.au

CEO: Associate Professor Gawaine Powell Davies
UNSW SYDNEY NSW 2052
Tel: +61 2 9385 1506 **Fax:** +61 2 9385 1513
Email: g.powell-davies@unsw.edu.au

Off campus research units

CHETRE

Director: Associate Professor Lynn Kemp
Locked Mail Bag 7103,
Liverpool BC NSW 1871
Tel: +61 2 9612 0779 **Fax:** +61 2 9612 0762
Email: mary.knopp@sswahs.nsw.gov.au

General Practice Unit

Director: Professor Siaw-Teng Liaw
Fairfield Hospital
PO Box 5
Fairfield NSW 1860
Tel: +61 2 9616 8520 **Fax:** +61 2 9616 8400
Email: siaw@unsw.edu.au

Please direct any inquiries regarding the Annual Report to Gawaine Powell Davies at g.powell-davies@unsw.edu.au.

Further information about the Centre for Primary Health Care and Equity can be found at www.cphce.unsw.edu.au.



