



# UNSW Research Centre for Primary Health Care and Equity Annual Report 2014

Never Stand Still

UNSW Medicine

Centre for Primary Health Care and Equity



*The Centre for Primary Health Care and Equity acknowledges that their offices are built on the traditional lands of the people of the Darug Nation and the Eora Nation, and pays their respect to Elders past and present*

UNSW Research Centre for Primary Health Care and Equity  
©2015 The University of New South Wales

Design and Printing coordinator: Chih-ching Sunny Chang  
Design and Printing: Creative Promises Pty Ltd  
Photos: John Yeats Photography, Chih-ching Sunny Chang  
Published August 2015  
CRICOS Provider Number 00098G



# ACKNOWLEDGMENT

It is a pleasure to be able to recognise those who support the Centre and work alongside us towards our aim of fairer, better health and health care in the community.

Our supporters include a familiar roll call of organisations, many of whom have been with us for many years: the Faculty and University within which we work, NSW Ministry of Health who provide essential infrastructure funding through a Population Health and Health Services Research Support Program grant, South Western Sydney Local Health District and the Ingham Institute for Applied Medical research who support CHETRE and the General Practice Unit at Fairfield, with the Ingham Institute also providing accommodation for CHETRE. We are grateful to the Sydney Local Health District for its support of Health Equity Research and Development Unit (HERDU) and the South Eastern Sydney Local Health District for its ongoing support and development of joint initiatives. We also thank the funding bodies who have supported our research: NHMRC, ARC, APHCRI, to name a few.




Those working alongside us also include many familiar names: the School of Public Health and Community Medicine, Muru Marri Indigenous Health Unit, the Australian Institute for Health Innovation and other UNSW researchers and research groups whose work intersects with ours; researchers from universities across Australia and in Canada, New Zealand, the USA and the UK; and people from the many government and non-government organisations with whom we work and who are listed in the Partners and Affiliations section on p. 45. We are grateful also to the clinicians and service providers across all sectors who take the time to participate in our research and take an interest in our findings.

We acknowledge particularly our partnerships with the Local Health Districts and Medicare Locals in central Sydney, south western Sydney and south eastern Sydney. These partnerships keep us in touch with the real world of health services and enable us to see how our findings apply to primary health care as it is practised.

We are grateful to members of our Steering Committee and Advisory Committee for the support and guidance they give us. Many of them have been with us for a long time, the Chairs, Professors Terry Campbell and Ian Webster since the Centre was formed.

Finally, we thank our staff. They live with short contracts, uncertain funding, and the difficulty of building coherent research programs on an often unpredictable funding base. The work reported here shows how well they continue to respond to this challenge. What is not reflected here but is equally important is the spirit of cooperation and mutual respect with which this is done.

# CONTENTS

	<b>ACKNOWLEDGMENTS</b>		1
	<b>CONTENTS</b>		2
	<b>BACKGROUND</b>		3
	<b>MANAGEMENT</b>		4
	Steering Committee and Advisory Committee		
	CPHCE Board of Directors		
	<b>STAFF</b>		10
	<b>RESEARCH</b>		14
	Prevention and management of chronic disease stream		
	Primary health care system development stream		
	Family and social ecology research stream		
	Primary health care informatics stream		
	Research and development hubs		
	Education and capacity building		
	<b>FELLOWSHIPS, SCHOLARSHIPS AND AWARDS</b>		34
	<b>TEACHING</b>		36
	<b>KNOWLEDGE EXCHANGE</b>		42
	Waranwarin Child and Family Centre Grand Opening		
	Annual Forum		
	Partners and Affiliates		
	Visiting academics		
	Staff membership of external committees		
	<b>PUBLICATIONS</b>		52
	<b>FINANCIALS</b>		60
	<b>CONTACT US</b>		62



# BACKGROUND

The Centre for Primary Health Care and Equity has been a UNSW research centre since 2005, building on two groups that had been working together since they were founded in 1996. We operate from four locations: on campus at Randwick, at Liverpool (the Centre for Health Equity Training, Research and Evaluation, “CHETRE”), at Fairfield (the General Practice Unit) and at Camperdown (the Health Equity Research and Development Unit, “HERDU”)

Our mission is to contribute to better, fairer health and health care in the community by conducting research, evaluation and development that strengthens primary health care and addresses health inequities. In 2014 our research streams were:

- Prevention and Management of Chronic Disease
- Primary Health Care Informatics
- Primary Health Care System Development
- Family and Social Ecology.

We support the uptake of our research findings in policy and practice, and undertake research capacity building, particularly in South Western Sydney.

We work across these areas at national, state and local levels. This enables us to investigate health issues at the level of individuals and communities, services and systems as well as putting them in an international context.

# MANAGEMENT

## 2014 Steering Committee

The Steering Committee oversees the work of the Centre, ensuring that it pursues its objectives in line with its terms of reference and is financially sound. The Committee met on 23 April, 6 August and 9 December 2014.

### Chair

**Professor Terry Campbell** Senior Associate Dean, Faculty of Medicine, UNSW Australia

### Members

**Professor Mark Harris** Executive Director, Centre for Primary Health Care and Equity, UNSW Australia

**Associate Professor Gawaine Powell Davies** CEO, Centre for Primary Health Care and Equity, UNSW Australia

**Dr Teresa Anderson** Chief Executive, Sydney Local Health District

**Professor Ilan Katz** Professor, Social Policy Research Centre

**Ms Amanda Larkin** Chief Executive, South West Sydney Local Health District

**Professor Raina MacIntyre** Head, School of Public Health and Community Medicine, UNSW Australia

**Professor Bill Randolph** Director, City Futures Research Centre, Faculty of the Built Environment, UNSW Australia



▲ Gawaine Powell Davies



▲ Theresa Anderson



▲ Ilan Katz



▲ Amanda Larkin



▲ Raina MacIntyre



▲ Bill Randolph

### Secretariat (non-voting member)

**Ms Sarah Ford** Finance Manager, Centre for Primary Health Care and Equity, UNSW Australia

## Message from the Chair of the Steering Committee



In 2014 the Centre followed the strategic directions set in the previous year, fine tuning as they went. The research hubs that bring the Centre together with neighbouring Local Health Districts were strengthened: in Sydney, the Health Equity Research and Development Unit became more firmly established within the Local Health District, and has been strengthening the focus on equity within the Local Health District as well as undertaking projects with community partners, particularly in Canterbury. In South Eastern Sydney we have been contributing to health service integration through the Integrated Care program, and laying the ground work for research and evaluation. In South Western Sydney a review confirmed the commitment of UNSW and the Local Health District to CHETRE and set directions for future support and development.

These research hubs, and other close relationships with Medicare Locals and other service providers reflect the Centre's commitment to applied research that makes a difference. This will be strengthened in coming years following a review of the Centre's education and capacity building activities, which confirms this as an important part of making research relevant and putting what is learnt into practice.

This is not at the expense of larger scale research and investigator-driven projects. The Centre is one of six research groups in a five-year Australian/Canadian Centre for Research Excellence aimed at improving access to primary health care for vulnerable communities; CPHCE also hosts a Centre for Research Excellence in preventing and managing obesity in primary health care and continues to work with local Aboriginal communities on its now eight-year study of Aboriginal child health and development; and in 2014 the Centre completed its involvement in large-scale evaluations of the NSW Health Chronic Disease Management Program and of Medicare Locals.

As always, the Centre is in the midst of change. Externally, Medicare Locals will be replaced by Primary Health Networks in 2015: the Centre has been working with local health services to plan for these changes. Internally, Gawaine Powell Davies has been planning his retirement as foundation CEO and senior primary health care researcher, and Elizabeth Comino is also gradually withdrawing from her important work in data linkage and Aboriginal health. While succession is never easy, these changes will provide opportunities for the renewal that all organisations need if they are to keep their edge.

I would like to thank all the staff of the Centre for their excellent work in 2014, and look forward to seeing what the coming year brings.

A handwritten signature in black ink that reads "T. Campbell". The signature is fluid and cursive, with a large initial 'T'.

**PROFESSOR TERRY CAMPBELL**  
Chair, Steering Committee

## 2014 Advisory Group

The Advisory Group provides strategic advice to the Centre on its research program. It met on 29 April, 15 July and 10 December 2014.

### Chair

**Emeritus Professor Ian Webster** School of Public Health and Community Medicine, UNSW Australia

### Members

**Ms Tish Bruce** Deputy Director, Ambulatory and Primary Health Care, SE Sydney Local Health District

**Ms Solange Frost** Senior Policy Officer, Council of Social Services New South Wales

**Professor Mark Harris** Executive Director, Centre for Primary Health Care and Equity, UNSW Australia

**Associate Professor Lynn Kemp** Director, CHETRE, UNSW Australia

**Mr Lewis Kaplan** CEO, GP NSW

**Professor Lisa Jackson Pulver** Director, Muru Marri Indigenous Health Unit, UNSW Australia

**Professor Siaw-Teng Liaw** Director, Fairfield General Practice Unit

**Professor Raina MacIntyre** Head, School of Public Health and Community Medicine, UNSW Australia

**Professor William (Bill) Bellew** School of Public Health, University of Sydney

**Associate Professor Gawaine Powell-Davies** CEO, Centre for Primary Health Care and Equity, UNSW Australia

**Associate Professor Virginia Schmied** School of Nursing and Midwifery, University of Western Sydney

**Dr Chris Shipway** Director Primary Care and Chronic Services, NSW Agency for Clinical Innovation

**Dr Christine Walker** Chronic Illness Alliance, Victoria

**Professor Nicholas Zwar** Professor of General Practice, School of Public Health and Community Medicine, UNSW Australia





## Message from the Chair of the Advisory Committee



The Centre's research and development focuses strongly on managing complexity, including the intersections between physical and mental health and between patient and clinician priorities in primary health care, and improving access for disadvantaged and vulnerable populations including Aboriginal and Torres Strait Islanders, refugee and low income people.

Chronic conditions can create many challenges for people, including managing their physical and mental health and living with pain and the restrictions that their conditions impose. Providing long term, comprehensive, person centred care for such people is an increasingly important part of the work of general practice and other primary health care services.

Primary health care is where the buck stops. Where specialist services are in short supply – for example in mental health or pain management – the task falls to primary health care. This is the reason why it is so important to have strong primary health care at the heart of the health system, with more specialised services providing support as well as taking on the care of complex cases. Recent National Mental Health Commission's (NMHC) reports have strongly emphasised community-based services and prevention, and the 2014 report is expected to recommend greater involvement of front-line practitioners.

The Centre's work on chronic conditions, prevention - such as in obesity, its involvement with disadvantaged communities and the ethos of equity have already informed primary health care policies and practice at national and local levels and, without doubt, will make increasing future contributions as greater emphasis is given to primary health care services. Its work on health system development has contributed to understanding of integrating primary health care services and developing the role of Medicare Locals and Primary Health Networks.

With these areas of research the Centre, necessarily, has engaged with many primary healthcare organisations, local district area health services, governments and international agencies. Its reputation has grown in result. It is now well embedded with research centres and partnerships in the South-Western Sydney Local Health District, Sydney Local Health District and the South Eastern Sydney Local Health District. With its strong relationships with primary health care, public sector services and non-government organisations, the Centre has a seminal role to play in integrating the policies and practices of the core elements of health services in our communities.

The Advisory Committee assists the Centre's leadership as it reviews the achievements and helps frame the research agenda for the future.

We acknowledge and appreciate the leadership of Professors Terry Campbell and Mark Harris and Associate Professor Gawaine Powell-Davies.

A special word about our Associate Professor Gawaine Powell-Davies, our CEO. Sadly for many of us who have known Gawaine over many years we have learnt he is retiring in 2016. It is hard for any of us to imagine the Centre without his presence. His unassuming nature, warmth and support has loomed large in the careers of everyone associated with the Centre since it began. We hope he will stay in close contact while enjoying and fulfilling his plans for the next phase of his life.

I express admiration for the work of each research stream and wish all the researchers productive future careers in research

We endorse the thanks of Professors Campbell and Harris for the support and encouragement of external funding bodies, University, Faculty of Medicine and the School of Public health and Community Medicine.

**EMERITUS PROFESSOR IAN W WEBSTER AO**  
Chair, Advisory Committee

# CPHCE Board of Directors



▶ **Executive Director**  
Professor Mark Harris



▶ **Chief Executive Officer**  
Associate Professor Gawaine Powell Davies

## Directors



▶ Associate Professor  
Lynn Kemp



▶ Professor  
Siaw-Teng Liaw



▶ Professor  
Nicholas Zwar



▶ Associate Professor  
Elizabeth Harris



▶ Dr Julie McDonald

## Message from the Executive Director



In 2014 we have continued to develop research units with Sydney and South East Sydney Local Health Districts and collaborative projects with the Medicare Locals in eastern, south eastern, inner west and south western Sydney. The Sydney Hub (Health Equity Research Development Unit – HERDU) is well established and has conducted many projects including a number of equity focused health impact assessments within the LHD and a project focused on access to health care in Canterbury with the Medicare Local Can Get Health.

We continue to lead COMPaRE- PHC, the Centre for Obesity Management and Prevention Research Excellence in Primary Health Care. We also have a major role in the Innovative Models Promoting Access-to-Care Transformation (IMPACT) – a Canadian Australian collaboration focused on improving access to primary health care

by vulnerable and disadvantaged population groups. In this we lead one of the three sites in Australia as well as conducting systematic reviews on interventions to address access needs. We have also continued our work with the 45 and Up study exploring the link between hospital and community based care for patients with type 2 diabetes.

The Gudaga cohort of Aboriginal children which began at birth, is now well into primary school and the trial of home visiting with Aboriginal children (Bullindidi Gudaga) is underway with children now being followed up into their second year of life. A collaborative project with Tharawal has been established to translate the findings of the Gudaga projects into policy and practice.

We have continued to conduct a number of key Health Impact Assessments (HIA) including a HIA on the Trans Pacific Partnership Free Trade Agreement which achieved considerable media coverage in Australia and internationally.

The Miller Early Childhood Home Visiting Trial (MESCH) program continued to be disseminated within Australia and overseas. CPHCE's research consistently informs government health policy at state and national levels. We have a broad range of partnerships with other researchers, policymakers, practitioners, local communities and consumers. During 2014 we hosted visits by a number of international researchers including:

- Emeritus Professor Aline-Wendy Dunlop, School of Education, Faculty of Humanities and Social Sciences, University of Strathclyde, UK
- Prof Iain Broom, Director of the Centre for Obesity Research and Epidemiology (CORE) at Robert Gordon University, UK
- Barbara Docherty, Honorary Clinical Lecturer, School of Nursing, University of Auckland, NZ
- Jan-Willem Weenink, Radboud University Nijmegen, Netherlands.

### Looking Forward

In 2014 and beyond CPHCE will continue to develop research on:

- health informatics in primary care in the support of better integrated care between secondary and primary care in the community
- improving access to appropriate primary health care for Aboriginal people and other vulnerable and disadvantaged population groups including refugees
- more effective strategies to address obesity and other risk factors for chronic disease in primary care
- addressing health literacy both at an individual and organizational level
- The role of primary care networks in commissioning and supporting better health care in the community.

CPHCE remains committed to developing local, national and international partnerships to support the delivery of applied research and policy relevant evaluation and to enable us to live up to our goal of a better and fairer health system.

### PROFESSOR MARK HARRIS

Professor of General Practice and Executive Director,  
Centre for Primary Health Care & Equity, UNSW Australia



# STAFF

All staff who worked at the Centre during 2014 (including long term casual staff) are listed below. As at November 2014, there were 43 staff members (29.5 FTEs).

## Professor

**Professor Mark Harris** MBBS, FRACGP, DRACOG, MD

## Associate Professor

**Associate Professor Pat Bazeley** Cert Teaching, BA (Hons), PhD

**Associate Professor Elizabeth Comino** BVSc, BSc, MPH, PhD

**Associate Professor Elizabeth Harris** BA, DipEd, DipSoc Work, MPH, PhD

**Associate Professor Lynn Kemp** BHSc, PhD, RN

**Associate Professor Gawaine Powell Davies** BA (Hons), MHP

**Associate Professor Marilyn Wise** BA, MHP

## Senior Research Fellow

**Dr Karen Gardner** BA, MPH, PhD

**Dr Rebekah Grace** BA Psch (Hons) PhD

**Dr Upali Jayasinghe** MSc Maths, GradDip Stats, GradDip Appl Stats, PhD

**Dr Jenny Knight** BA (Hons), Dip Ed, MPH, PhD

**Dr Julie McDonald** BA, MPH, PhD, RN

**Dr Catherine Spooner** BA, MPH, PhD

**Dr Hairong Yu** BEng (Hons), MSc, PhD

## Research Fellow

**Dr Amit Arora** BDS, MDSc (Hons), PhD  
**Dr Nighat Faruqi MBBS, MCCH, PhD**  
**Ms Fiona Haigh** BSocSc, MPH, LLB, PhD Candidate  
**Dr Patrick Harris** – BA (Hons) MPH, PhD  
**Dr Jane Lloyd** BAppSc (Health Ed), MPH, PhD  
**Ms Jane Taggart** BEd, Dip PE, MPH

## Senior Research Officer

**Ms Tracey Bruce** BA, MHSM, RN  
**Ms Penelope Finlay** BA, GradDipSocEcol, MPASR  
**Ms Sharon Parker** BHSc (Nursing), MPH, RN  
**Ms Heike Schütze** AdvCert Biomed Tech, BSc (Biomedical), MPH, PhD Candidate

## Research Associate/Research Officer/Project Officer

**Ms Cheryl Anderson**  
**Ms Fiona Byrne** BAppSc (Information Studies); Assoc Dip Lib Prac  
**Ms Ros Eames-Brown** B.ED (Nursing) PhD  
**Ms Emma Elcombe** Cert IV Bus, BAppSc (Equine Studies), MSc (Brain and Mind Sciences)  
**Mr Iqbal Hasan** MBBS, MTH  
**Mr Oshana Hermiz** MB, ChB, DS  
**Ms Katie Hirono** BA, MPH  
**Mr Md Fakhru Islam** BSc, MSc, MIS, MBiostat MIEAust  
**Ms Karla Jaques** BPH  
**Ms Chandni Joshi** MPH/MHM, MIPH  
**Ms Rachael Kearns** B Nursing, MPH, RN  
**Dr Catherine Kaplun** BEd (ECE) (Hons), PhD  
**Ms Vivien Le** MPH  
**Dr Melanie Moylan** BSc (Hons) PhD  
**Mr Nicholas (Nick) Rosser** A/Dip Health (Sport and Rec), Dip Health (Sports Coaching), BExSc&R, MSc  
**Ms Sheryl Scharkie** RN  
**Ms EY Song** Bsoc, MSoc  
**Ms Jaimie Tredoux** BHSc, MHSM  
**Ms Natasha West** Certificate III Aboriginal and Torres Strait Primary Health

## Programmer

**Ms Monica Aburto** Cert. Microsoft Access Advanced, SAS Programming

## Research Assistant

**Ms Veronica Morrison**  
**Mr Tom Powell Davies** BA (Hons)  
**Mr Robert Smith**  
**Mr Jan-Willem Weenink** BSc (BioMed), MSc

## Finance Manager

**Ms Sarah Ford** BBus

## Administrative Officer

**Ms Chih-Ching (Sunny) Chang** BA, Grad Dip (Interpreting & Translation), MCom  
**Ms Nouhad (Nina) El Haddad** BSc, MNutDiet, PhD Candidate  
**Ms Elizabeth Kemp**  
**Ms Fakhra Maan** BEng Lit/BJourn, MEng Lit, MCom (Organisation and Management)  
**Ms Lauren Norton** Dip Bus Man

## Affiliated staff

(employed by the School of Public Health and Community Medicine)

### Professor

**Professor Siaw-Teng Liaw** MBBS, Dip Obstetrics, PhD, FRACGP, FACMI, FACHI

**Professor Nicholas Zwar** MBBS, MPH, PhD, FRACGP

### Senior Lecturer

**Dr Joel Rhee** BSc (Med), MBBS (Hons), GradCert (ULT), FRACGP

(employed by Sydney South West Local Health District)

### Staff Specialist & Senior Lecturer

**Dr Andrew Knight** MBBS, MMedSci (ClinEpid), FRACGP, FAICD

**Dr Michael Tam** BSc(Med), MBBS, MMH(GP), FRACGP

### Research Officer/Project Officer

**Ms Emma Friesen** BEng (MfgSys) (Hons), BBus (Mktg), MProfEdTrain (WorkVocEdTrain)

**Ms Joan Silk** BA (Hons), Dip Ed

**Ms Siggie Zapart** BPsych (Hons), PhD Candidate



## Administrative Officer

**Ms Mary Knopp** Dip Bus Admin

## Conjoint Staff

**Mr Ben Cave** Ben Cave Associates, Leeds, England

**Dr Elizabeth Denney** – Wilson University of Technology Sydney

**Dr Sarah Dennis** University of Sydney

**Dr Mahnaz Fanaian** University of Wollongong

**Associate Professor Terry Findlay** Australian Primary Health Care Research Institute

**Dr Rebekah Grace** – Macquarie University

**Dr Patrick Harris** BA (Hons), MPH, PhD

**Dr Benjamin Harris** – Roxas Urbis Consultants

**Dr Yordanka Krastev** University of Technology Sydney

**Dr Rachael Laws** Deakin University

**Dr Melanie Moylan**

**Dr Timothy Shortus** General Practitioner

**Ms Sarah Simpson** World Health Organisation

**Dr Sanjyot Vagholkar** MBBS (Hons), MPH, FRACGP, PhD Candidate

**Dr Salim Vohra** Centre for Health Impact Assessment Institute of Occupational Medicine, London

**Dr Qing Wan** St Vincent's Hospital, Sydney

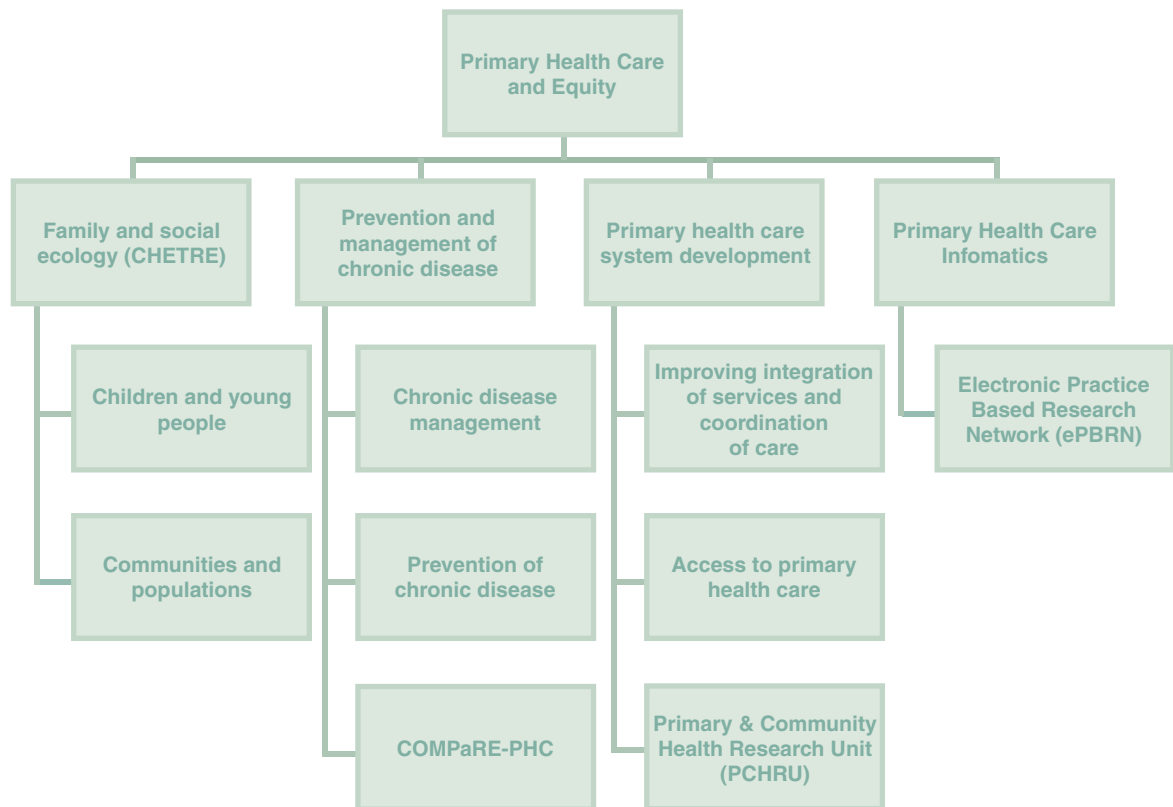
**Ms Anna Williams** – Notre Dame University





# RESEARCH

The Centre has four research streams, with a number of sub-programs.



Research projects active in 2014 are listed below by stream. The chief investigator is named first (in bold) followed by the project coordinator (underlined). Other members of the research team are listed in alphabetical order, and affiliations are provided for those who are not part of CPHCE. The source of funding is given in brackets. For further details of projects, please see our web site ([www.cphce.unsw.edu.au](http://www.cphce.unsw.edu.au)).



# Prevention and management of chronic disease stream

**Our research on the prevention and management of chronic disease in primary health care addresses a broad range of problems currently confronting the health system as it struggles to deal with the increasing burden of chronic disease. These include innovations in the roles of health care providers within the primary care team, engagement of patients in their own care, use of new information and decision support and quality improvement strategies, and better coordinated referral and coordination between PHC care providers.**

## Improving chronic disease management

This program focuses on improving the quality of care for a range of chronic diseases in PHC including diabetes, chronic respiratory and cardiovascular disease, cancer and patients with multiple conditions including chronic physical and mental illness. The theoretical basis of this work includes the expanded chronic illness model which identifies the support systems and organization required for optimal patient centered chronic disease management including new roles for primary care providers especially practice nurses, support for patient self-management, decision support and information systems. This program is increasingly focusing on patients with multi-morbidities in primary health care.

## Projects

---

### **Attitudes to cancer follow up care in general practice: Translational Cancer Research Network (TCRN) UNSW**

*Research Team:* **Mark Harris**, Heike Schütze, Lena Caruso (Translational Cancer Research Network), Melvin Chin, Robyn Ward (Prince of Wales Hospital), David Weller (Edinburgh University)

---

### **Culturally appropriate diabetes care in mainstream general practice for urban Aboriginal & Torres Strait Islander people (NHMRC)**

*Research Team:* **Siaw-Teng Liaw**, John Furler (Department of GP, University of Melbourne), Margaret Kelaher (Onemda VicHealth Koori Health Unit, University of Melbourne), Phyllis Lau (Department of GP, University of Melbourne), Priscilla Margaret Pyett (Monash University), Kevin Rowley (Onemda VicHealth Koori Health Unit, University of Melbourne)

---

### **PELICAN: A cluster randomised trial of early intervention for Chronic Obstructive Pulmonary Disease by practice nurse - GP teams (NHMRC)**

*Research Team:* **Nicholas Zwar**, Jeremy Bunker, Alan Crockett (University of Adelaide), Sarah Dennis, Iqbal Hasan, Oshana Hermiz, Sandy Middleton (Australian Catholic University), Helen Reddel (Woolcock Institute, University of Sydney), Onno van Schayck (Maastricht University), Sanjyot Vaghokar

---

### **Quality Improvement in general practice**

*PhD Student:* **Barbara Booth**; Supervisors: Mark Harris and Nicholas Zwar

---

### **Integrating chronic illness self-management plans with primary care management: a clarification model of patient-provider care congruence.**

*PhD Student:* **Anna Williams**; Supervisors: Patricia Bazeley and Mark Harris

**Shifting ground, common ground. Understanding the evolving care practice. Inter-country comparative study Canada USA and Australia (Canadian Institute for Health Research)**

*Research Team:* **William Hogg** (University of Ottawa), Ben Crabtree (University of New Jersey), Jane Gunn (Melbourne University), Mark Harris, Jean-Fred Levesque (Université de Montréal), Siaw-Teng Liaw, Julie McDonald, William Miller (Pennsylvania State University), Gawaine Powell Davies, Grant Russell (Monash University), Catherine Scott (Alberta Health Services)

## Preventing chronic disease

Our research in prevention has focused on the behavioural risk factors (smoking, nutrition, alcohol, physical activity) and the physiological conditions which predispose to chronic diseases (obesity, hypertension, dyslipidaemia, and pre-diabetes). We have developed and evaluated interventions based on the 5As framework (Assess, Advise, Agree, Assist, Arrange) across the life-cycle. A particular focus is on the management of overweight and obesity and preventive care for disadvantaged groups with low health literacy. The research has included mixed method feasibility studies, quasi experimental and cluster randomized trials in both general practice and community health services. The interventions have included interactive training of health professionals in assessment of risk and motivational interviewing, enhancing the role of practice nurses, supporting referral and uptake of individual and group diet and physical activity education programs, and long term follow up and support. This research has informed NSW and Australian Government health policy and has been translated into guidelines and resources for practitioners.

## Projects

**Cardiovascular absolute risk assessment in general practice and impact on prescribing.**

*PhD Student:* **Sanjyot Vagholkar**; Supervisors: Mark Harris and Nicholas Zwar

**Centre for Obesity Management and Prevention Research Excellence in Primary Health Care (COMPARE-PHC) (APHCRI)**

*Research Team:* **Mark Harris**, Catherine Spooner, Deborah Askew (Queensland Health- Inala Indigenous Health Service), Adrian Bauman (University of Sydney), Kylie Ball (Deakin University), Iain Broom (Robert Gordon University), Karen Campbell (Deakin University), Ian Caterson (University of Sydney), David Crawford (Deakin University), Elizabeth Denney-Wilson (University of Technology Sydney), Noel Hayman (Queensland Health - Inala Indigenous Health Service), Upali Jayasinghe, Jonathon Karnon (University of Adelaide), Rachel Laws (Deakin University), Siaw-Teng Liaw, John Lynch (University of Adelaide), Gawaine Powell Davies, Deborah Schofield (University of Sydney), Nigel Stocks (University of Adelaide), Julie Will (Centres for Disease Control and Prevention)

*A number of projects are being undertaken in the Centre as part of COMPARE-PHC including:*

**1. Better Management of Weight in General Practice (BMWGP)**

*Research Team:* **Mark Harris**, Nighat Faruqi, Elizabeth Denney-Wilson (UTS), Nouhad El-Haddad, Oshana Hermiz, Rachel Laws (Deakin University), Siaw Teng Liaw, Jane Lloyd, Catherine Spooner, Nigel Stocks (University of Adelaide)

**2. Health economic analysis of a model for implementation of guidelines**

*Research Team:* **Mark Harris**, Jodi Gray (University of Adelaide), Jonathon Karnon (University of Adelaide), Sharon Parker, Catherine Spooner, Nigel Stocks (University of Adelaide)

**3. Health literacy interventions for weight management**

*Research Team:* **Mark Harris**, Catherine Spooner, Deborah Askew (Inala Indigenous Health Service), Sarah Dennis (University of Sydney), Nighat Faruqi, Chandni Joshi, Jane Lloyd, Nigel Stocks (University of Adelaide), Jane Taggart

**4. Referral of obese patients in primary care**

*Research Team:* **Mark Harris**, Ian Caterson (University of Sydney), Elizabeth Denney-Wilson (UTS), Jonathon Karnon (University of Adelaide), Kyoungh Kon Kom (Gachon University of Medicine and Science), Rachel Laws (Deakin University), Siaw-Teng Liaw, Megan Passey (University of Sydney), Catherine Spooner, Lin-Lee Yeong

**Implementing guidelines to routinely prevent chronic disease in general practice (PEP) (NHMRC partnership grant)**

*Research Team:* **Mark Harris**, Sharon Parker, Raghieb Ahmad, Chris del Mar (Bond University), John Litt (Flinders University), Jane Lloyd, Danielle Mazza (Monash University), Gawaine Powell Davies, Grant Russell (Monash University), Richard Taylor (SPHCM, UNSW), Mieke van Driel (University of Queensland), Nicholas Zwar

**Evaluation of the Literacy Gap in Health among Target Population: the LiGHT Project.**

Research team: **Mark Harris**, Nighat Faruqi, Chandni Joshi, Jane Lloyd

**SEEF Equity study: access to preventive and primary health care (NHMRC)**

*Research Team:* **Mark Harris**, Elizabeth Comino, Fakhru Md. Islam

**Torpedo study: cardiovascular risk assessment and management in primary care. (NHMRC funding agreement with George Institute)**

*Research Team:* **David Peiris** (George Institute), **Mark Harris**, Sharon Parker, Nicholas Zwar

**Understanding the impact of social, economic and geographic disadvantage on the health of Australians in mid-later life: What are the opportunities for prevention? (NHMRC through Sydney University)**

*Research Team:* **Adrian Bauman**, Jack Chen, Elizabeth Comino, Mark Harris, Fakhru Md. Islam, Bin Jalaludin (SWSLHD)

**Consumer Navigation of Electronic Cardiovascular Tools - The CONNECT study. NHMRC funding agreement with George Insititute.**

Research Team: **David Peiris**, Tim Usherwood, Mark Harris Harris, Sharon Parker



# Primary health care system development stream

Primary health care is the setting for most of the Centre's research. The projects in this stream focus on the health care system itself, from the perspectives of improving integration and access. Much of this work is applied, and involves working with the Local Health Districts and Medicare Locals in central, south eastern and south western Sydney. The development of research hubs with Sydney and South Eastern Sydney Local Health Districts has provided new opportunities for working with them on primary health care development.

During the year, the funding for the Primary and Community Health Research Unit within south western Sydney finished. We evaluated the program and suggested future directions for building research capacity within the health services.

## Improving Integration of Services and Coordination of Care

In 2014, there was a shift in policy support for more integrated care as the Department of Health prepared to replace Medicare Locals with Primary Health Networks, and in NSW the Chronic Disease Management Program (CDMP) came to an end and was replaced by the Integrated Care program. Both of these shifts were influenced by our evaluations of Medicare Locals and the CDMP. During the year we worked through our research hubs to support integration, and commenced development of a guide to strengthening health care in the community.

### Projects

**A framework to support Local Health Districts in their decision about community based health services Agency for Clinical Innovation (ACI via Sax Institute)**

*Research Team:* **Karen Gardner**, [Elizabeth Harris](#), Mark Harris, Julie McDonald, Gawaine Powell Davies, Tom Powell Davies,

**An evaluation of the development, implementation, feasibility and impact of a tailored intervention to improve the quality of care for Aboriginal and Torres Strait Islander peoples attending general practice (NHMRC PhD scholarship)**

*PhD student:* **Heike Schütze**; Supervisors: Mark Harris, Elizabeth Harris, Lisa Jackson Pulver

**Assisting Medicare Locals with planning for afterhours primary medical care (Eastern Sydney Medicare Local, South Eastern Sydney Medicare Local and South Western Sydney Medicare Local).**

*Research Team:* **Julie McDonald**, **Gawaine Powell Davies**, [Pauline Foote](#), Lesley Garton (SWSML), Tom Powell Davies

**Can Get Health in Canterbury (Sydney LHD, Inner Western Sydney ML)**

*Research Team:* **Elizabeth Harris**, Penny Findlay, Tracey Wills (IWSML)

**Developing an appropriate and evidence-based position on the ML role in traditional Community Health services (SWSML)**

*Research team:* **Karen Filocamo**, Julie McDonald, Gawaine Powell Davies, Tom Powell Davies

**Evaluation of the NSW Chronic Disease Management Program (NSW Health)**

*Research team:* **Gawaine Powell Davies**, **Julie McDonald**, Laurent Billot (The George Institute), Alan Cass (The George Institute), Anne-Marie Feyer (The George Institute), Marion Haas (CHERE), Mark Harris, Alina McDonald (The George Institute), Fiona Turnbull (The George Institute), Rosalie Viney (CHERE), Nicholas Zwar

---

**Evaluation of the Prevention in Primary Health Care SNA Program (NSW Heart Foundation)**

*Research team:* **Julie McDonald**, Gawaine Powell Davies

---

**How can the primary health care system better support Aboriginal Australians released from the criminal justice system? (APHCRI)**

*Research team:* **Jane Lloyd**, Penny Abbott (UWS), Eileen Baldry (School of Social Sciences and International Studies), Mark Harris, Devon Indig (UNSW School of Public Health and Community Health), Elizabeth McEntyre (UNSW School of Social Sciences), Jennifer Reath (UWS), Juanita Sherwood (University of Sydney), Dea Thiele (Aboriginal Medical Service Western Sydney)

---

**Integrated Primary Health Care Centres: A multiple methods comparative case study (APHCRI)**

*Research team:* **Anne Bardoel** (Monash), Sarah Dennis (Sydney University), Jeff Fuller (Flinders) Rachael Kearns, Riki Lane (Monash), Julie McDonald, Gawaine Powell Davies, Tom Powell Davies, Grant Russell (Monash), Catherine Spooner, Christine Walker (Chronic Illness Alliance), Bernadette Ward (Monash).

---

**Investigation of models of public/private partnership in community health care (SLHD)**

*Research team:* **Gawaine Powell Davies**, Louise Cowper

---

**More integrated chronic disease management in Prince of Wales Hospital (SESLHD).**

*Research team:* Karen Edwards (consultant), **Julie McDonald**, Gawaine Powell Davies

---

**National evaluation of Medicare Locals (Department of Health and Ageing)**

*Research team:* **Gawaine Powell Davies**, Jenny Advocat (Monash), Karen Edwards (Ernst and Young), Elizabeth Harris, Mark Harris, Thieu Hue Lam (Ernst and Young), Riki Lane (Monash), Siaw-Teng Liaw, Julie McDonald, Grant Russell (Monash), Sheena Wu (Ernst and Young), Nicholas Zwar

---

**Primary Health Care Research Unit (SWSLHD)**

*Research team:* **Elizabeth Comino**, Emma Friesen, Teng Liaw, Fakhra Maan, Gawaine Powell Davies,

---

**Qualitative study of two Superclinics (RACGP and Monash University)**

*Research team:* **Grant Russell** (Monash University), Mark Harris, Gawaine Powell Davies, Nicholas Zwar

---

**Regional Health Services Integration (SESLHD)**

Karen Edwards (consultant) Julie McDonald, Gawaine Powell Davies



Gawaine Powell Davies, leader of the Access to Primary Health Care stream, receiving a gift at 2014 Annual Forum to recognise his transition to semi-retirement.

## Access to Primary Health Care

The IMPACT study continues as a major two-country study of ways of improving access to primary health care for people in disadvantaged communities. Activities included a participatory decision making process to identify priorities in South Western Sydney and systematic reviews of the literature on interventions to improve access to PHC for vulnerable population groups.

We continued to develop our work using data linkage in a feasibility study for a cohort of older people in Sydney and South Eastern Sydney, building on the 45 and Up and the SEEF project databases.

## Projects

### Assessing the Feasibility of an Aged Care Cohort Study (SLHD)

*Research team:* Elizabeth Comino, **Elizabeth Harris**, Md. Fakhru Islam

### Hospital in the Home Equity Lens (SLHD)

*Research Team:* **Elizabeth Harris**, Elizabeth Comino, Jude Page

### Innovative Models Promoting Access and Coverage Team (IMPACT) Centre for Research Excellence (APHCRI, CIHR).

**Mark Harris**, Teng Liaw, Jean Frederic Levesque, Julie McDonald, Sharon Parker, Gawaine Powell Davies

### Investigating Best Practice Primary Care for Older Australians with Diabetes Using Record Linkage: a Pilot Study (NHMRC)

*Research Team:* **Elizabeth Comino**, Jeff Flack (SWSLHD), Marion Haas (UTS), Mark Harris, Bin Jalaludin (SWSLHD), Louisa Jorm (UWS), Gawaine Powell Davies, Kris Rogers (SAX Institute)

### Universal Health Home Visiting Project (SLHD)

*Research Team:* **Elizabeth Harris**, Tish Bruce (SESLHD), Miranda Shaw (SWSLHD)

### Use of Services by Homeless People in South Eastern Sydney Local Health District (SESLHD)

*Research Team:* **Julie McDonald**, Gawaine Powell Davies

## Primary and Community Health Research Unit (PCHRU)

PCHRU is a program of research capacity building in community health in South Western Sydney Local Health District. During 2013/2014 PCHRU was funded through the Division of Community Health, South West Sydney Local Health District. PCHRU is a collaborative activity of UNSW, UWS, SWSML and SWSLHD. Oversight is provided by the PCHRU Advisory Group comprising the major collaborators and the Community Health Research Advisory Group.

### Projects

**“Falling in between the cracks” - barriers to diabetes self-management in culturally diverse but linguistically-able patients from non-English speaking backgrounds**

*Research Team:* **Della Maneze** (SWSLHD), **Elizabeth Comino**, **Emma Friesen**, **Anau Speizer** (SWSLHD), **Daisy Yogendran** (SWSLHD)

**Implementation of AAC systems for children with physical disabilities and complex communication needs**

*Research team:* **Kate Margetson** (SWSLHD), **Sarah Carman** (SWSLHD), **Elizabeth Comino**, **Emma Friesen**, **Kate Short** (SWSLHD & USyd)

**Macarthur Sexual Assault Service Referral and Client Profile – Analysis and Trends 2001-2010**

*Research team:* **Alison Huggan** (SWSLHD), **Debbie Allan** (SWSLHD), **Elizabeth Comino**, **Emma Friesen**, **Trin Ha** (SWSLHD)

**Pap test screening for cervical precancer in women with a history of substance use in drug and alcohol rehabilitation services**

*Research team:* **Jacqui Soccio** (SWSLHD), (SWSLHD), **Margaret Brown** (SWSLHD & Ingham Institute for Applied Medical Research), **Elizabeth Comino**, **Emma Friesen**

**Review of the SWSLHD Social Work Model of Care**

*Research team:* **Lissy Tressa** (SWSLHD), **Elizabeth Comino**

**Supporting families not engaging with Child Protection services when clinicians have wellbeing or child protection concerns**

*Research Team:* **Belinda Mawhinney** (SWSLHD & SLHD), **Elizabeth Comino**, **Vanda De Silva** (SWSLHD), **Kim Dunlop** (SWSLHD), **Melissa Harnett** (SWSLHD), **Sarah Marsh** (SWSLHD), **Rhonda Mather** (SWSLHD), **Alison Tutt** (SWSLHD)



Elizabeth Comino, leader of the PCHRU program speaking at the 2014 Annual Forum.

# Family and social ecology research stream

**This research stream applies a family and social ecology framework, recognising that health, development and wellbeing are the product of complex interacting factors at the individual, family, community and environmental levels. We conduct multilevel research with participatory research processes where interventions and innovations are embedded within systems and built on a relationship between local research institutions and the professional and broader community. Through this approach we undertake practice and policy relevant research that provides high quality research reports and peer-reviewed publications, and direct support for practice and service development and capacity building.**

## Children and Young People

This program focusses on understanding the needs of vulnerable families (including families at risk of poorer child health and development outcomes, families living in lower socioeconomic communities and Aboriginal families) and developing and trialling interventions to improve child and young people's health, development and educational outcomes, including individual, family and service system interventions. This research program is grounded in the evidence about the importance of the early years, and targets families with children from antenatal (pregnancy) to the second decade of life.

Key research in this program includes the Gudaga research program: a suite of studies that includes the NHMRC funded Gudaga cohort study of urban Aboriginal children's health and development, the ARC funded Gudaga goes to school study of the children's experience of the early years of schooling, and the NHMRC funded Bulundidi Gudaga quasi-experimental study of sustained nurse home visiting.

The other primary research program is focussed on home visiting interventions, and includes the international implementation of the Maternal Early Childhood Sustained Home-visiting (MECSH) program and the Volunteer Family Connect (VFC) trial of volunteer home visiting.

## Projects

---

### **An ecological study of school transition and the early years of school for Aboriginal children in an urban location (ARC)**

*Research Team:* **Lynn Kemp**, Rebekah Grace, Cheryl Jane Anderson, Elizabeth Comino, Sue Dockett (Charles Sturt University), Melissa Haswell-Elkins (Muru Marri Indigenous Health Unit, UNSW), Lisa Jackson Pulver (Muru Marri Indigenous Health Unit, UNSW), Cathy Kaplun, Jenny Knight, Fakhra Mann, Bob Perry (Charles Sturt University), Sheryl Scharkie, Natasha West

---

### **Bulundidi Gudaga (Closing the gap: improving Aboriginal maternal and child health in Macarthur) (NHMRC)**

*Research Team:* **Lynn Kemp**, Rebekah Grace, Cheryl Jane Anderson, Trish Clark (SWSLHD), Elizabeth Comino, Elizabeth Harris, Mark Harris, Lisa Jackson Pulver (Muru Marri Indigenous Health Unit, UNSW), Jennifer Knight, John Lynch (University of SA), Jenny McDonald (SWSLHD), Cathy McMahon (Macquarie University), Sheryl Scharkie, Vicki Wade (SWSLHD), Natasha West, Darryl Wright (Tharawal Aboriginal Corporation)

---

### **Evaluation of the Healthy Learner Project in a disadvantaged high school (Mounties)**

*Research team:* **Siaw-Teng Liaw**, Sarah Dennis, Edward Noon (Ashcroft High School)





The Gudaga team

---

**MECSH Program Licence and Service agreement (Essex, Somerset, Jersey and Plymouth, United Kingdom; Australian Research Alliance for Children and Youth, Victoria and Tasmania; Seoul, South Korea)**

*Research Team:* **Lynn Kemp**, Tracey Bruce, Fiona Byrne, Siggi Zapart

---

**Sustained nurse home visiting: who benefits, why and how? (PhD study)**

*PhD candidate:* **Siggi Zapart**; Supervisors: Lynn Kemp, Jenny Knight

---

**The Gudaga Study: Describing the health, development, early education, family environment and service context of Aboriginal children aged five to nine years in an urban location (Gudaga III) (NHMRC, SWSLHD)**

*Research Team:* **Elizabeth Comino**, Jennifer Knight, Cheryl Jane Anderson, Rebekah Grace, Lisa Jackson Pulver (Muru Marri Indigenous Health Unit, UNSW), Bin Jalaludin (SWSLHD), Catherine Kaplun, Lynn Kemp, Kelvin Kong, Fakhra Maan, Jenny McDonald (SWSLHD), Cathy McMahon (Macquarie University), Sheryl Scharkie, Natasha West

---

**Volunteer Family Connect: Effective care to improve the health of families with young children and their volunteer carers (Benevolent Society, Good Beginnings Australia, Karitane)**

*Research Team:* **Rebekah Grace**, Saul Flaxman (Benevolent Society), Les Hems (Centre for Social Impact), Lynn Kemp, Yvonne McCann (Karitane), Heather Smith (Good Beginnings Australia), Jaimie Tredoux, Jayne-Meyer Tucker (Good Beginnings Australia), Graham Vimpani (University of Newcastle)

---

## Communities and Populations

This program focuses on the health and wellbeing of whole communities and populations. This research program is grounded in the evidence about the positive and negative impacts of the social determinants of health and their distribution within our society: these inequities in health, avoidable health inequalities, arise because of the circumstances in which people grow, live, work, and age, and the systems put in place to deal with illness. The conditions in which people live and die are, in turn, shaped by political, social, and economic forces. Research in this program is conducted with communities, populations and organisations, and addresses planning and policies.

In 2014 we continued to undertake research, training and capacity building in complex community intervention and to engage with local intersectoral partners including local government, NSW Land and Housing Corporation, Housing NSW, Department of Family and Community Services and SWSLHD. Community STaR, our flagship training and research centre funded by Liverpool City Council, undertook a series of community activities to explore social cohesion. We continue to undertake supervision and mentoring of undergraduate and postgraduate research and practice students in the areas of health promotion, medicine and social work.

Our health impact assessment (HIA) program continues to support the undertaking of HIA locally, nationally, and internationally, including work in South America and Africa. In 2014/15 we conducted a HIA on the proposed Trans-Pacific Partnership Agreement, which helped inform debate on this controversial topic. Our Learning by Doing Courses in HIA and in Working with Locational Disadvantage helped build capacity within LHDs and the community sector.

## Projects

---

**Community 2168 research and training hub (Liverpool City Council, NSW Department of Community Services, SWSLHD)**

*Research Team:* **Vanessa Rose**, Harrison Ng Chok, Joan Silk

---

**Equity Focused Health Impact Assessment – Healthy Together Victoria (Department of Health Victoria)**

*Research team:* **Elizabeth Harris**, Katherine Hirono, Chandni Joshi, Heike Schütze, Marilyn Wise

---

**Evaluation of Community 2168 Community Regeneration Intervention (Liverpool City Council, Housing NSW, SWSLHD)**

*Research team:* **Vanessa Rose**, Joan Silk, Elizabeth Harris, Harrison Ng Chok, and the Community 2168 Management Committee

---

---

**Equity Focused Health Impact Assessment of Quit Victoria Review 2012-2015 (VicHealth)**

*Research team:* **Marilyn Wise**, Katie Hirono, Elizabeth Harris

---

**From advocacy to action: Utilising Health Impact Assessment as a tool to realise the right to health (NHMRC PhD Scholarship)**

*PhD Student:* **Fiona Haigh**; Supervisors: Lynn Kemp, Vanessa Rose

---

**Healthy Built Environments (SWSLHD)**

*Research team:* **Peter Sainsbury** (SWSLHD), Mark Thornell (SWSLHD), Meria Beer (SWSLHD), Fiona Haigh, Lynn Kemp, Bin Jalaludin (SWSLHD), Steven Conaty (SWSLHD), Mandy Williams (SWSLHD), Elizabeth Millen (SWSLHD)

---

**Health Impact Assessment of the Trans Pacific Partnership Agreement**

*Research Team:* **Katie Hirono**, Fiona Haigh, Deborah Gleeson (La Trobe University), Patrick Harris, Anne Marie Thow (Sydney University)

---

**Health in Council (SWSLHD)**

*Research team:* **Mark Thornell** (SWSLHD), Maria Beer (SWSLHD), Fiona Haigh, Katie Hirono, Tina Britton (Wollondilly Shire Council), Carolyn Whitton (Wollondilly Shire Council)

---

**Housing and Health Partnership (Population Health, South Western Sydney Local Health District, NSW Health; Greater Western Sydney Area, Department of Family and Community Services; Housing NSW Land and Housing Corporation, Department of Finance and Services; CHETRE)**

*Research team:* **Patrick Harris**, Fiona Haigh, Lynn Kemp Anthony Hartley (NSW Department of Family and Community Services), Debra Mitford (FACS), Cathryn Noble (FACS), Deborah Follers (Land and Housing Corp), Julie Churchward (FACS), Michael Van Der Lay (Housing NSW), Peter Sainsbury (SWSLHD), Mark Thornell (SWSLHD)

---

**Learning by Doing Health impact Assessment Training (SWSLHD)**

*Research team:* **Fiona Haigh**, Patrick Harris

---

**Learning by Doing Health Impact Assessment Evaluation**

*Research team:* **Katie Hirono**, Fiona Haigh, Marie Beer (SWSLHD)

---

**Influencing health and wellbeing considerations in EIA, and application in local government (Population Health, South Western Sydney & Sydney Local Health Districts)**

*Research team:* **Patrick Harris**, Harrison Ng Chok

---

**Negotiating healthy trade in Australia: Health impact assessment of the proposed Trans-Pacific Partnership Agreement**

*Research Team:* **Katie Hirono**, **Fiona Haigh**, **Deb Gleeson** (La Trobe University), **Patrick Harris** and Ann-Marie Thow, (Sydney University)

---

**National appraisal of Continuous Quality Improvement initiatives in Aboriginal and Torres Strait Islander primary health care (Lowitja Institute)**

*Research team:* **Marilyn Wise**, Sandra Angus, Elizabeth Harris, Sharon Parker

---

**Points of health influence in the Housing NSW Master Planning process (Population Health, South Western Sydney & Sydney Local Health Districts,)**

*Research team:* **Patrick Harris**, Fiona Haigh, Lynn Kemp, Mark Thornell (SWSLHD)

---

**Working in locationally disadvantaged communities: learning by doing program**

*Research Team:* **Elizabeth Harris**, **Vanessa Rose**, **Joan Silk**

---

**World Health Organization Human Rights, health policy-making and programming: Case Study Report - Vermont's Human Rights-Based Approach to Universal Health Care Coverage (WHO)**

*Research Team:* **Gillian MacNaughton** (University of Massachusetts Boston), Fiona Haigh, Mariah McGill (Northeastern University School of Law), Konstantinos Koutsoumpas (University of Massachusetts Boston), Courtenay Sprague (University of Massachusetts Boston)

---

# Primary health care informatics stream

**The growing health care needs of the ageing population, scarcity of resources and increasing costs of health care delivery in the management of chronic disease have emphasised the need for up-to-date information, and knowledge management and exchange. The Primary Health Care Informatics (PHCI) stream agenda includes**

- **the good design of electronic health records (EHRs), and**
- **electronic decision support, as eHealth and mHealth applications, to achieve a patient-centred integrated PHC system that is accessible and equitable, which emphasises prevention and early detection, and has good clinical and corporate governance.**

A number of eHealth and informatics driven translational research programs in UNSW Australia support and are supported by the PHCI stream activities.

The three key programs in the Primary Health Care Informatics stream are:

- The UNSW electronic Practice Based Research Network (ePBRN): This is a collegial network of computerised general practices, Area/District Health Services and other health providers involved with integration and coordinated care in the Fairfield Health Neighbourhood in SW Sydney. ePBRN members receive feedback and act on the quality of clinical information in an ongoing quality improvement program. Informatics methods, developed with collaborators in UK, Canada and USA, are used to manage the large data repository of EHR information.
- The WHO Collaborating Centre (eHealth): Professor Liaw is a co-Director of this research centre which is based in UNSW Medicine School of Public Health & Community Medicine. This is an international recognition of UNSW's significant research strength in informatics and e/mHealth evaluation, research and development. The program has a focus on capacity building in the Asia Pacific and mHealth in aged and disadvantaged communities
- The NHMRC Centre for Research Excellence in Health Informatics and eHealth: This was based at UNSW but is now located at Macquarie University with the move of Prof Coiera (CIA) to Macquarie; Professor Liaw is a Chief Investigator (CIC) in this CRE. The focus of the Primary Health Care Informatics research is patient-centred electronic decision support.

## Electronic decision support projects

---

### **An assessment of community readiness for mHealth in rural Bangladesh (AusAid)**

*PhD Student:* **Fatema Khatun**; Supervisors: Siaw-Teng Liaw, Anita Heywood (SPHCM, UNSW), Pradeep Ray (APuHC)

---

### **Healthy me to optimise the management of asthma (CRE in eHealth) (NHMRC)**

*Research team:* **Annie Lau** (CHI), Amael Arguel (CHI), Sarah Dennis, Siaw-Teng Liaw

---

### **Mobile health in aged and disadvantaged communities (WHO Collaborating Centre (eHealth))**

*Research team:* **Pradeep Ray** (APuHC), Raina MacIntyre (SPHCM, UNSW), Siaw-Teng Liaw

## ePBRN-related projects

### eHealth and integration in Integrated Primary Care Centres, including SuperClinics

Research team: **Siaw-Teng Liaw**, Andrew Knight, Joel Rhee, Michael Tam, Jane Taggart, Hairong Yu, Nicholas Zwar

### Ontology-based approaches to identify patients with type 2 diabetes mellitus from electronic health records: Development and Validation (Iran Government)

PhD Student: **Alireza Rahimi**; Supervisors: Siaw-Teng Liaw, Pradeep Ray (APuHC)

### Safety of GP information systems (Centre for Health Informatics) (NHMRC)

Research team: **Farah Magrabi** (CHI), Michael Kidd (Flinders), Siaw-Teng Liaw

### The accuracy of existing data extraction tools from GP Electronic Health Records (EHR) (NPS)

Research team: **Siaw-Teng Liaw**, Andrew Knight, Joel Rhee, Michael Tam, Jane Taggart, Hairong Yu, Nicholas Zwar

### The ePBRN as a PHCI infrastructure and platform for projects

Research team: **Siaw-Teng Liaw**, Jane Taggart, Enrico Coiera (CHI), Elizabeth Comino, Simon de Lusignan (University of Surrey), Geoff Delaney (SWSLHD Cancer Services), Sarah Dennis, Mark Harris, Andrew Hayen (SPHCM), Bin Jalaludin (SWSLHD), Gawaine Powell Davies, Pradeep Ray (APuHC), Hairong Yu, Sanjyot Vagholkar, Nicholas Zwar

### Using the electronic Practice Based Research Network (ePBRN) to prevent re-admission for type-2 diabetes (HCF)

Research Team: **Sarah Dennis** (University of Sydney), Mark Harris, Bin Jalaludin (SWSLHD), Siaw-Teng Liaw, Alan McDougall (SWSLHD), Rene Pennock (SWSML), Gawaine Powell Davies, Jane Taggart, Hairong Yu, Nicholas Zwar



ePBRN team

# Research and development hubs

**In 2014 the Centre continued establishing a new structure: hubs for research and service development, as joint ventures with the South Western, South Eastern and Sydney Local Health Districts. This builds on experience with CHETRE, which has long been supported by the University and the Local Health District, and has provided a base for collaboration on research, capacity building put evidence into practice.**

Each hub is supported by both the Centre and the Local Health District with a formal agreement, an advisory committee and funding from both groups. The hubs are seen as bridges between the Centre and the LHD, conducting research and evaluation that is of interest to both groups, supporting the uptake of research into practice and giving researchers direct engagement with health services. We hope that in future the Primary Health Networks can also become part of these research hubs.

The new hub in South Eastern Sydney is coordinated by Dr. Julie McDonald. It started formally in October 2014, building on several years' of close collaboration, and is currently funded until the end of 2017. The initial focus has been on establishing relationships with key stakeholders, contributing to the development of an evaluation strategy for the Integrated Care Strategy and identifying opportunities for research and evaluation. This includes the feasibility of a longitudinal cohort of older people living in the area based on the 45 and up study, opportunities to compare different models of universal home screening in SES and Sydney Local Health Districts and the Children's Hospital Network; and undertaking a pilot research project that could feed into a larger NHMRC or ARC grant proposal.

## CHETRE

In South Western Sydney the Centre for Health Equity Training Research and Evaluation (CHETRE) was led by Assoc Prof Lynn Kemp. It has been running for twenty years, and in 2014 continued a very full program of research in Aboriginal child health, sustained home visiting, Health Impact Assessment and working with disadvantaged communities. During 2014, with the Local Health District we reviewed the fit between the work of CHETRE and the strategic directions of CPHCE and the Local Health District and the support needed to sustain it in the longer term. This confirmed commitment to CHETRE, and set directions for future development.

The substantial work program undertaken by CHETRE staff with key partners is described in detail under the Family and Social Ecology Research Stream.

## HERDU

The hub with Sydney Local Health District, is called the Health Equity Research and Development Unit (HERDU). It is led by Assoc. Prof Elizabeth Harris, and has three other staff (part and full time) employed by the university and the Local Health District. Within the Local Health District, it has reviewed LHD plans and patterns of service provision from an equity perspective, and is doing a feasibility study for a cohort of older Australians in the area, for research, service planning and evaluating. Externally it is working with the LHD and Medicare Local with services in Canterbury to improve access to primary health care and run targeted projects for a very varied and often disadvantaged population.

The strategic plan for the Unit includes:

### **a) Work within the local health system to:**

- identify and facilitate action to increase equity of access to optimal health care (including preventive care and early intervention) within the population of the SLHD, including attention to the distribution of services in relation to population and need;
- build organisational and workforce capacity to recognise the need for and to take effective actions.

**b) Work outside the health system with government, non-government, private sector and community organisations to:**

- increase equitable access to the opportunities and environments necessary for health;
- increase the social and political power of marginalised communities and create effective pathways to enable their active and influential inclusion in social decision-making – in government, private sector, non-government or civil society organisations;
- develop and test processes/methods to actively engage communities in social decision-making (e.g. using deliberative democratic methods).

**c) Undertake high quality applied research to:**

- contribute to better understanding of the complex nature of the determinants of inequities in access to optimal health care and ways of addressing them;
- contribute to better understanding of the complex nature of the determinants of inequities in health and of actions to address these effectively;
- guide the development of effective policies and practices to reduce health inequity.

**d) Develop innovation in high quality teaching and learning to:**

- strengthen individual and organisational capacity for effective action across the health system, partner organisations and community.

**e) Provide leadership nationally and internationally to:**

- develop and evaluate practical tools and approaches that can be used by health (and other social service) professionals and organizations to increase health equity.

## HERDU Achievements

Reducing health inequity in the most marginalised communities in the LHD through addressing barriers to health services and improving access relevant health information and services.

- Developed and made accessible relevant, comprehensible information and skills development eg. Mental Health First Aid courses for Chinese-born residents of SLHD, and ensuring translated materials on child safety and development reach Bangladeshi families.

Building the organisation's capacity to meet the health needs of culturally diverse populations

- Supported Directorates to conduct research, develop frameworks and project plans to identify inequity and promote relevant and effective initiatives
- Conducted a Health Literacy seminar and workshop to review current research on health literacy needs of people from culturally and linguistically diverse backgrounds. Strategies are being developed to build organisational capacity for health literacy as part of the Supporting Patient and Family Centred Care plan
- Developing training and awareness of health inequity and how to address needs of various priority groups

Developing partnerships to improve communication and access to health

- Developing a transport, access and parking plan to improve patient, carer and visitor access and engagement with health services

Strengthening the knowledge base of the health and access needs of marginalised people in SLHD

- Conducting equity focused research eg. Patterns of referral to Hospital in the Home in SLHD and Healthy Ageing to better understand local issues and intervention points

## Researcher Profile

### DR JANE LLOYD



I first began working at the University of New South Wales in 1997 as the GP-Hospitals Network Coordinator for the Integration Support Evaluation and Research Unit. It was my second job after completing a Bachelor of Applied Science in 1996, and working as a project officer at the ACT Division of General Practice.

My mother was a GP in Petersham and an active member of the AMA and the RACGP. She would not charge patients who could not afford to pay and always had a waiting room of patients who had brought a packed lunch, and something to read or do while they waited. I spent a fair bit of time in that waiting room and so in many ways grew up in primary health care setting, with the knowledge that not everything was fair and just. Working with Mark and Liz Harris over the years strengthened my resolve to conduct practical and meaningful research for people who have been marginalised or overlooked by the health system. My academic qualifications and work experience have given me the tools and a platform for this.

In 2003 I moved to Darwin and commenced a PhD at Menzies School of Health Research. My original plan was to conduct a randomised control trial of a diabetes intervention for Aboriginal Australians living in urban areas. However I soon realised that a single intervention would not suit the diverse range of Aboriginal communities, and that much of the benefit from an intervention stems from the process of engagement and community development. I was unsure whether designing another intervention was the best contribution that I could make.

At this point I came across the following passage in a book entitled: *From the Bush to the Store: Diabetes, Everyday Life and the Critique of Health Services in Two Remote Northern Territory Communities*:

'Many of the Aboriginal people conducted during this project are, to put it bluntly fed up with the circulatory and inconsistency of health intervention strategies. They are also fed up with the continually recycled rhetoric of 'culturally appropriate intervention'. Health bureaucracies are seen as continuously 'reinventing the wheel', so to speak, by engaging in an ongoing process instituting, abandoning and then reinstituting essentially similar interventions strategies within particular communities. These complaints relate to wider issues to do with the comparative lack of 'institution memory' within health bureaucracies and organisations in the Northern Territory, the high turnover of health personnel, and a culture of 'short term' project planning with the health field'. p 43.

This resonated strongly with me, so I focused my PhD on ways to improve the implementation of Aboriginal health policy. I found that Aboriginal health policies are not implemented seamlessly across the health care system. Policies evolve as they are implemented and are influenced by context. Health professionals tend to follow aspects of policy that are most familiar to them rather than according to evidence or population needs. Existing limitations in the structure of the health care system are perpetuated, and existing inequities are maintained. Where Aboriginal health services lack the capacity to contribute to policy, the health care system is less able to find new and more effective approaches.



In 2007, with my PhD in hand, I returned to Sydney and to the University of New South Wales. I am now a Public Health Researcher with an interest in implementation science and policy-related research. I conduct applied research that is intended to contribute to better health and health care in the community by strengthening access to primary health care and addressing health inequities. Aboriginal health and applied research is conducted in partnership with Aboriginal organisations and service providers to ensure the research is ethical, informed, relevant and implementable.

My career highlights include being awarded an NHMRC Early Career Fellowship in 2011 and being the first named chief investigator on an Australian Primary Health Care Research Institute Grant in 2012. Since being awarded this funding I have been building a research program to improve access to primary health care for marginalised groups including Aboriginal Australians in contact with the criminal justice system, and to support people with low health literacy to access preventive care in primary care settings.

# Education and capacity building

**Education and capacity building are ways in which the Centre tries to ensure that its research makes a difference. During 2014 we invited a consultant to review our activities in this area and suggest directions for the future. The report was adopted, and in 2015 this aspect of the Centre's work will be coordinated by Prof. Nick Zwar, and supported through the Centre's infrastructure funding.**

**Our contribution to academic teaching and to external training is reported on p.36 We build an element of knowledge translation into each research program to support the uptake of findings by service providers and policy makers. The following programs have a particular strong focus on education and capacity building.**

## The electronic Practice Based Research Network (ePBRN)

The ePBRN, coordinated from the General Practice Unit at Fairfield Hospital, has evolved from a data extraction and record linkage project into a research infrastructure that underpins a series of Integrated Health Neighbourhoods to support integrated health services research. These Neighbourhoods comprise a "medical home" and its referral network. The most developed of these, the Fairfield Neighbourhood consists of the Fairfield Hospital and its ambulatory care and outreach services, community health services, primary care and general practice services. This has been used to develop a predictive model for admission of patients with diabetes in the Fairfield Network. Similar infrastructure is being used in the Wollondilly Integrated Care project led by the SWSLHD and SWSPHN as part of the Wollondilly Health Alliance.

This structure allows for longitudinal studies of integrated health care, with the Integrated Health Neighbourhood as the focus of integration across the primary-secondary care continuum and the LHD/ PHN seen as a network of Integrated Health Neighbourhoods. This will enable comparative effectiveness research across Integrated Health Neighbourhoods and also across LHDs.

The ePBRN then becomes a platform for health services research and research training with a focus on the use of routinely collected electronic data in electronic health records. With high quality data and a sound understanding of multi-method research, researchers from primary and secondary care will be able to conduct robust cohort studies, clinical trials, quality improvement audits and comparative effectiveness research cost-efficiently.

This data quality and analytics research program is one of the core activities that underpin the PHC Informatics Stream of the CPHCE.

## The Primary and Community Health Research Unit (PCHRU)

For the past three years PCHRU has supported research within community health in South Western Sydney Local Health District. It has been a collaboration between SWSLHD Division of Community Health, University of NSW, University of Western Sydney and SWS Medicare Local, directed by Associate Professor Elizabeth Comino, and coordinated by Emma Friesen and Fakhra Maan. Its activities have included a Research Mentoring Program (RMP), a review of the research culture and capacity within the Local Health District and strengthening research governance and infrastructure within community health.

In 2014, its funding came to an end. We conducted a review of the work of PCHRU over the three years, and proposed strategic directions for future research capacity building within community health. This is now with the Local Health District.

## Centre for Obesity Management and Prevention Research Excellence in Primary Health Care (COMPARE-PHC)

Like other APHCRI-funded Centres of Research Excellence, COMPARE-PHC has a role in building capacity in its particular area of primary health care research. In 2014 COMPARE-PHC funded three postdoctoral fellows and three PhD scholarships as well as supporting a range of other students at Doctoral, Masters, Honours and undergraduate levels. These fellows and students were located across the COMPARE-PHC sites: CPHCE, Deakin University, UTS University of Adelaide and Inala Indigenous Health Service. During 2014, three journal articles were published with postdoctoral fellows, two with the postdoctoral fellows as first authors. One of our postdoctoral fellows obtained an NHMRC postdoctoral fellowship during 2014. We continue to support this fellow by funding a research assistant to ensure her work with COMPARE-PHC can continue while she is engaged in new work with the new fellowship.

COMPARE-PHC organised a range of activities that aimed to build capacity beyond academia. A number of these events included international experts. First, Professor Iain Broom, Director of the Centre for Obesity Research and Epidemiology at Robert Gordon University (UK) talked about the development and roll-out of the Counterweight Program in policy roundtable discussions, public seminars and targeted workshops. Second, Barbara Docherty, leader of University of Auckland's Training and Development Services, presented a public workshop on communicating with patients about their weight.

COMPARE-PHC continued to develop and maintain its website and e-newsletter, both of which had been established in 2013 to disseminate information to researchers, policy makers, clinicians and others interested in the prevention and management of obesity by PHC.

## Mentoring and supervision

Mentoring and supervision include the work of the General Practice Unit at Fairfield in training registrars in the GP training program, supervision for Masters and PhD candidates; and providing research experience for Independent Learning Project and other students from the Faculty of Medicine.



# FELLOWSHIPS, SCHOLARSHIPS AND AWARDS

In 2014, 2 staff had research fellowships and 3 PhD scholarships. The Centre also awarded top up scholarships to those on PhD scholarships of less than \$25,000 per annum. Other higher degree candidates are listed later in the report.

## Fellowships

**Harris, Mark** NHMRC Senior Principal Research Fellowship. 2011-2015

**Lloyd, Jane** NHMRC Training Fellowship. Addressing variations in the implementation of guidelines for preventive activities in general practice. 2011-2016

## Scholarships

\***El Haddad, Nouhad**. COMPARE-PHC Postgraduate Research Scholarship. 2013-2015

\***Haigh, Fiona**. NHMRC Postgraduate Research Scholarship. 2013-2015

\***Schütze, Heike** NHMRC Postgraduate Research Scholarship. 2011-2014

\*Also received CPHCE top up for lower paying PhD scholarships

## Awards

**Harris, Elizabeth**. Bellagio Resident Fellowship, The Rockefeller Foundation

**Building Evidence & Research-The Gudaga Research Program.**

NSW Aboriginal Health Awards 2014 (13th November 2014)

**Sudden infant death syndrome in an urban Aboriginal community. Journal of Paediatrics and Child Health 49, 1025-1031.**

Winner of the Liverpool Catholic Club Best Community Paper prize, Ingham Institute for Applied Medical Research Awards Night (20th November 2014)



Ingham paper award



Aboriginal Health Awards 2014



# TEACHING

Our teaching within the Faculty of Medicine, elsewhere in UNSW and for other universities and organizations allows us to share current research with students and enables staff to develop and maintain their teaching experience. Below is a summary of teaching by Centre staff in 2014.<sup>1</sup>

## Undergraduate Medicine at UNSW

Subject	Lecturer(s)
Foundation Course	Mark Harris, Elizabeth Harris, Lynn Kemp, Katherine Hirono
Independent Learning Project – student placement	Mark Harris (supervisor)
Phase 1 Clinical Teaching	Siaw-Teng Liaw, Sanjyot Vagholkar (tutors)
Phase 2 Society and Health	Elizabeth Harris, Andrew Knight, Siaw-Teng Liaw, Mark Harris, Sanjyot Vagholkar (lecture,), Nicholas Zwar,
Phase 3 Primary Care	Andrew Knight, Siaw-Teng Liaw, Joel Rhee, Tim Shortus, Sanjyot Vagholkar, Nicholas Zwar

1. This does not include teaching by Profs. Nicholas Zwar or Siaw-Teng Liaw, which is part of their substantive roles as a member of the School of Public Health and Community Medicine

## Postgraduate Medicine at UNSW

### Master of Public Health Program

#### a) MPH Electives run through CPHCE

Subject	Lecturer(s)
Health Impact Assessment	Fiona Haigh (course co-ordinator); Patrick Harris, Katherine Hirono (co-convenor), Marilyn Wise (lecturers)
Inequalities in Health	Lynn Kemp (course co-ordinator); Elizabeth Comino, Fiona Haigh, , Patrick Harris, Rebekah Grace, Peter Sainsbury, Jane Lloyd, Heike Schütze (lecturers), Katherine Hirono
Prevention and management of chronic disease	Mark Harris, Nicholas Zwar, Rohan Jayasuriya (coordinators); Elizabeth Denney-Wilson, Sarah Dennis, Chandni Joshi, Siaw-Teng Liaw, Gawaine Powell Davies, Catherine Spooner (lecturers)
Principles and Practice of Primary Health Care Services in the Community	Gawaine Powell Davies, Julie McDonald (course co-ordinators); Mark Harris, Chandni Joshi, Heike Schütze, Nicholas Zwar (lecturers)

#### b) Contributions to other MPH Courses

Subject	Lecturer(s)
Environmental Health	Fiona Haigh
Introduction to Public Health	Elizabeth Harris, Patrick Harris, Katherine Hirono
Community Development	Katherine Hirono
Development human rights and health	Fiona Haigh, Lynn Kemp

## Other Undergraduate and Graduate Teaching

Subject	Lecturer(s)
Work effectively with Aboriginal and Torres Strait Islander peoples	Heike Schütze (Coordinator and lecturer)

## Other Teaching

Subject	Lecturer(s)
Supervision of GP Registrars in Practice for GP Synergy	Siaw-Teng Liaw, Andrew Knight, Joel Rhee, Nicholas Zwar (supervisors)

## Short Courses and Workshops

Course	Lecturer(s)
Master Class. Tackling the social determinants of health: Interventions that are 'fit for purpose'. 2-day short course	Elizabeth Harris, Marilyn Wise, Sarah Simpson (coordinators and lectures), Heike Schütze (facilitator)

## PhD Research Students

The Centre provides many opportunities for research students. In 2014 a total of 15 PhD students were enrolled at the Centre (including a number of CPHCE staff members<sup>2</sup>). In addition, CPHCE staff co-supervised a number of students from other Universities.

Name	Thesis Title	Supervisor/ Co-supervisor	Expected Completion
Abby Anderson	Evaluation of health assistants in general practice	Judy Proudfoot, Mark Harris	2015
Barbara Booth	Quality improvement in general practice	Mark Harris, Nicholas Zwar, Jan Ritchie	Submitted 2014
Shona Dutton	Quantifying physical activity behaviour in a primary care setting - an instrument for measuring physical activity change in general practice	Sarah Dennis, Mark Harris	2015
* Nouhad (Nina) El Haddad	Ethnicity and health literacy for weight management in non-English speaking migrants attending primary health care	Mark Harris, Elizabeth Denney-Wilson, Nighat Faruqi, Catherine Spooner	2016
* Fiona Haigh	From advocacy to action: Utilising Health Impact Assessment as a tool to realise the right to health.	Lynn Kemp, Vanessa Rose	2016
Fatema Khatun	An assessment of community readiness for mHealth in rural Bangladesh	Siaw-Teng Liaw, Anita Heywood, Pradeep Ray	2015
Suzanne McKenzie	Mental health and prevention of cardiovascular disease in general practice- impacts and interactions	Mark Harris, Gavin Andrews	Submitted 2014
Janani Pinidiyapathirage	Gestational diabetes in Sri Lankan women	Rohan Jaya-suriya, Vanessa Rose	2014
Alireza Rahimi	Ontology-based approaches to identify patients with type 2 diabetes mellitus from electronic health records: development and validation	Siaw-Teng Liaw, Pradeep Ray	2014
Joel Rhee	A study of advance care planning in the primary care context	Nicholas Zwar, Lynn Kemp	Submitted 2014
* Heike Schütze	An evaluation of the development, implementation, feasibility and impact of a tailored intervention to improve the quality of care for Aboriginal and Torres Strait Islander peoples attending urban general practice	Mark Harris, Elizabeth Harris, Lisa Jackson Pulver	Submitted 2014
Sanjyot Vagholkar	Cardiovascular absolute risk assessment in general practice and impact on prescribing	Nicholas Zwar, Mark Harris	Submitted 2014
* Anna Williams	Integrating chronic illness self-management plans with primary care management: a clarification model of patient-provider care congruence	Mark Harris, Patricia Bazeley	2015



Name	Thesis Title	Supervisor/ Co-supervisor	Expected Completion
Sue Woolfenden	Inequity in Developmental Vulnerability, its determinants and the role of access to prevention and early intervention services	Lynn Kemp, Valsa Eapen, Katrina Williams	2017
* Siggie Zapart	Effective sustained nurse home visiting: who benefits, why and how?	Lynn Kemp, Jenny Knight	2015

\* CPHCE Staff enrolled in post-graduate study



Barbara Booth, who submitted a successful PhD application in 2014.

## PhD Student Profile

### A/ PROF SUZANNE MCKENZIE



Back to front and probably upside down describes my pathway to both academia and the completion of a PhD with the CPHCE. I have been a general practitioner for 25 years and have worked in a variety of practices in NSW and now Queensland. I am a true generalist, interested in everything and everyone. This describes my research interests as well as my clinical interests.

After many years of working in clinical practice and doing some research and teaching with the RACGP, I embarked on an academic career with UNSW in 2003. I was responsible for developing one of the courses for the new medical program, Society and Health 2 and also taught general practice skills to the more senior students. I did a number of small projects investigating different aspects of chronic disease prevention and had several publications to my name. I finally was dragged kicking and screaming into a PhD in 2007 when I was lucky enough to be included as CI on a large NHMRC project with Professor Mark Harris and colleagues. I developed my proposal in conjunction with the project and investigated the mental health aspects of the intervention designed to address cardiovascular risk factors in general practice patients. I conducted a mixed method study motivated by my patients who were always telling me (literally or otherwise) that “stress” prevented them making lifestyle changes that might benefit their health. I thought I would explore psychological distress in the participants in the randomized controlled trial and see if indeed stress played a part in either facilitating or blocking attempts at lifestyle behavior change.

So, seven publications later (three as first author) and lots of hard work, a thesis was written and the PhD awarded in July 2014. The answer to the question, not surprisingly, is complex and the thesis a good read. To get there, it was 7 long years of persistence peppered with significant personal and professional challenges and you might say it was all worth it in the end. I moved to James Cook University in north Queensland in 2010 and am now the Head of the Discipline of General Practice and Rural Medicine, Director of Clinical Studies for the College of Medicine and Dentistry, the Primary Health Care Coordinator for the Anton Breinl Research Centre for Health Systems Strengthening, the Clinical Coordinator for the North Queensland Practice Based Research Network and, in my spare time, the Assessment Panel Chair for the RACGP North Queensland Sub- Faculty.

I teach medical students in all 6 years of the undergraduate medical program at JCU, have supervised two MBBS honours students, am a research mentor for a Masters student and have just accepted my first PhD student. I travel extensively in north Queensland as we have students and staff spread out over an area that is more than twice the size of NSW, from the Torres Strait in the north, down to just south of Mackay and west to Mt Isa, Winton and Longreach. As I fly over the Barrier Reef for a day or two of work in Cairns, or over the red dirt and cattle country of western Queensland on the way to Mt Isa, I pinch myself about how lucky I am. As I cross the Gulf of Carpentaria and see all the massive rivers flowing north on the way to see students in Darwin, I wonder how a GP from northern Sydney ended up in this wonderful part of the world. A part of Australia which is a land of great beauty but where we still have great health disparities and where we have populations that are underserved. A land where we are training a health workforce who have the right skills and attitudes to work in the places of most need and know how to make a difference to their communities. What a privilege to be able to use the skills and knowledge that have been entrusted to me by my teachers and mentors to contribute to this cause.





# KNOWLEDGE EXCHANGE

## Grand Opening of Waranwarin Child and Family Centre and Close the Gap Day

**Thursday, 20 March 2014, Waranwarin Child and Family Centre**

Members of the Gudaga Research Team attended the Tharawal celebrations for Closing the Gap Day on Thursday 20 March 2014. This year they were held at the Waranwarin Child and Family Centre and were combined with the official opening of the Waranwarin Centre. This day is an opportunity for the Aboriginal community to come together and celebrate their work towards building a strong, healthy Aboriginal community on Tharawal Lands.

The Gudaga Research Team are strong supporters of programs and activities at Tharawal Aboriginal Corporation. Today we hosted a stall that showcased the Gudaga and Bulundidi Gudaga Research with information about the work for families as well as balloons and other activities for the children. Members of the research team are members of the Waranwarin advisory committee and work with the Waranwarin Centre and with Tharawal to ensure that the Gudaga Research findings are taken up and inform the development of programs for Aboriginal families living on Tharawal land.



**A/Prof Elizabeth Comino with Uncle Ivan Wellington at the Close the Gap Day**

# 2014 Annual Forum

**Friday 22 August 2014, John Niland Scientia Building, UNSW Australia**

The CPHCE Annual Forum is an important calendar event where we showcase our current research and recognise organisations and individuals with whom we have worked and have assisted us in our research. It is also a networking opportunity where our staff can meet and socialise with staff from our partner organisations. Over 140 staff, research partners and colleagues from interstate attended the 2014 Annual Forum.



◀ **Ian Webster Health for all Oration**

Prof Michael Kidd

## Awards



◀ **Individual Partnership Award**

Dr Michael Moore  
Inner West Sydney Medicare Local

**Organisational Partnership Award** ▶

South Eastern Sydney Local Health District accepted by Dr Greg Stewart



◀ **Medicare Local Partnership Award**

South Western Sydney Medicare Local  
Accepted by Mr Rene Pennock

**Health Impact Assessment Award** ▶

Professor Michael Moore Transpacific Partnership accepted by Katie Hirono of CPHCE who worked on the Transpacific Partnership HIA



# Partners and Affiliates

We collaborate with many different individuals and organisations. Some of our main partners in 2014 are listed below.

## Partnership with Local Health Districts and Medicare Locals

We have had very strong partnerships with our neighbouring health services. This reflects our history – our origins were in South Western Sydney Area Health Service – and the long term support that the Local Health District continues to provide. We conduct a significant part of our research with the Local Health Districts and Medicare Locals in central, south eastern and eastern Sydney. They keep us in touch with the realities of providing health services and we work together to develop and test new approaches. We receive generous support from the Local Health Districts, and are working to formalise research partnerships with each. We have also worked closely with the Medicare Locals, and look forward to similar collaboration with the Primary Health Networks when these are established.

## UNSW

- Asia Pacific Ubiquitous Health Care Research Centre
- Faculty of the Built Environment
- Faculty of Medicine Lifestyle Clinic
- Institute for Health Innovation: Centre for Clinical Governance and Centre for Health Informatics
- School of Business
- School of Public Health and Community Medicine
- Social Policy Research Centre

## Health Departments

- Australian Government Department of Health and Ageing
- NSW Health
- NSW Kids and Families
- Tasmanian Department of Health and Human Services
- WA Health

## Health Services

- Hunter New England Local Health District
- La Perouse Aboriginal Community Controlled Health Service
- Inala Aboriginal Health Service
- South Eastern Sydney Local Health District
- South Western Sydney Local Health District
- Sydney Local Health District
- Tharawal Aboriginal Corporation
- Western Sydney Aboriginal Medical Service

## Other Government Departments

- NSW Department of Family and Community Services
- NSW Department of Education and Communities
- Victorian Department of Education and Early Childhood Development

## Local Government

- Canterbury City Council
- Liverpool City Council
- Wollondilly Shire Council

## Australian Universities and Research Institutes

- Australian National University:
  - Australian Primary Health Care Research Institute
  - National Centre for Epidemiology and Population Health
- University of Sydney:
  - Broken Hill University Department of Rural Health
  - Faculty of Health Sciences
  - Northern Rivers University Department of Rural Health
- Bond University
- Charles Sturt University
- Curtin University
- The George Institute for Global Health
- Ingham Institute for Applied Medical Research
- James Cook University
- LaTrobe University
- Lowitja Institute
- Macquarie University
- Royal Children's Hospital Centre for Community Child Health (CCCH), Murdoch Children's Research Institute, University of Melbourne
- Southern Academic Primary Care Research Unit (SAPCRU), Monash University
- Southgate Institute for Health, Society and Equity, Flinders University
- University of Adelaide
- University of Melbourne
- University of Newcastle
- University of Queensland
- University of Technology Sydney

- University of Western Sydney
- Woolcock Institute of Medical Research

## Medicare Locals and Associated Organisations

### National

- Australian Medicare Local Association

### NSW

- Eastern Sydney Medicare Local
- Far West Medicare Local
- GP New South Wales
- Inner West Sydney Medicare Local
- Hunter Medicare Local
- Murrumbidgee Medicare Local
- Nepean Blue Mountains Medicare Local
- South Eastern Sydney Medicare Local
- South Western Sydney Medicare Local
- Western Sydney Medicare Local

### South Australia

- Central Adelaide and Hills Medicare Local (CAHML)

### Victoria

- The Northern Melbourne Medicare Local (NMML)
- Barwon Medicare Local



## Non-Government Organisations

- Ashcroft High School
- Australian National Preventive Health Agency
- Australian Practice Managers' Association
- Australian Practice Nurse Association
- Australian Research Alliance for Children and Youth
- Benevolent Society
- Beyond Blue
- Bupa Health Foundation
- Cabramatta Community Centre
- Chronic Illness Alliance
- Community 2168
- Ernst and Young
- Fairfield Migrant Resource Centre
- Gandangara Aboriginal Health Service
- Good Beginnings Australia
- GP Synergy
- Hepatitis NSW
- Karitane
- Kurranulla Aboriginal Community
- La Perouse/ Botany Bay Aboriginal Corporation
- Liverpool Migrant Resource Centre
- Maules Creek Community Council
- Miller Art and Fact
- National Heart Foundation of Australia
- National Prescribing Service
- NSW Ministry of Health Centre for Epidemiology & Evidence
- NSW Service for the Treatment and Rehabilitation of Torture and Trauma Survivors (STaRTTS)
- NSW Users and AIDS Association
- Nutrition Australia
- National Aboriginal Community Controlled Health Organisation
- Royal Australian College of General Practitioners
- South West Youth Peer Education
- Urban Institute for Indigenous Health
- Warwick Farm Neighbourhood Centre
- Weight Watchers

## International

- Alberta Health Services
- Birkbeck College, London
- CDC Chronic Disease Prevention
- Centres for Disease Control, Atlanta
- China-Australia health and HIV/AIDS facility (CAHAF)
- Department of Family Medicine, University of Ottawa
- Edinburgh University
- Gesundheit Osterreich GmbH
- Institut National de Santé Publique du Québec
- International SOS
- International Union for Health Promotion and Education
- Kings College London
- Kurume University
- Maastricht University
- Manchester University
- McGill University
- National Primary Care Research and Development Centre, University of Manchester, UK
- Robert Wood Johnson Medical School, New Jersey
- Seoul National University
- The Nuffield Trust
- University of British Columbia
- University of California (San Francisco)
- University of Central Lancashire
- University of Colorado
- University of Otago
- University of Ottawa
- University of Surrey
- University of Sussex
- University of Washington
- Victoria University (Wellington, New Zealand)



# Visiting Academics



◀ **Prof Iain Broom**

Director of the Centre for Obesity Research and Epidemiology (CORE) at Robert Gordon University, UK

**Emeritus Professor Aline-Wendy Dunlop** ▶

School of Education, Faculty of Humanities and Social Sciences, University of Strathclyde, UK



◀ **Barbara Docherty**

Honorary Clinical Lecturer, School of Nursing, University of Auckland, NZ

**Jan-Willem Weenink** ▶

Radboud University Nijmegen, Netherlands

(See feature story next page for Jan-Willem's experience in Australia)



## Visiting Researcher Profile

### JAN-WILLEM WEENINK MSC



I studied Biomedical Sciences at the Radboud University Nijmegen in my home country, the Netherlands. My Masters of Science included a major in Health Technology Assessment and a minor in Public Administration. The final stage of my study involved a research internship concentrating on patient care teams in primary care, which I conducted at IQ Healthcare - a scientific institute within the Radboud University Medical Centre, which focuses on quality improvement in healthcare. After finishing my study I continued working at IQ Healthcare as a researcher, carrying out problem-based research assignments for the benefit of policy and practice.

Most of my projects during my three years at IQ Healthcare focused on performance measurement and reporting, such as the development of national quality indicators for hospital-based care, the influence of public quality information on patients' hospital and health professional choice, and the use of patient reported outcome measures (PROMs) in primary care. During this time, I developed a specific interest in the underperformance of healthcare professionals, a subject in which my interests for health sciences, psychology and organisational management meet. Since 2012, I've been continuously involved in research projects focusing on how to adequately deal with healthcare professionals that persistently underperform.

In April 2014 I came to Australia, initially for three months. However, these three months became a full year. The first six months I worked at the Bureau of Health Information (BHI), focusing on a report about patient experiences with integrated care in public hospitals in New South Wales. During this time, I also spent one day a week as a visiting fellow at the Centre for Health Economics Research and Evaluation (CHERE) at the University of Technology in Sydney (UTS). In November 2014, I started working at the Centre for Primary Health Care and Equity (CPHCE) at UNSW. I've primarily been involved in the IMPACT research program. Specifically, I supported the reanalysis of data from a series of large international primary care surveys, aiming to identify contextual factors that influence access or the success of access innovations for vulnerable populations. During my time at CPHCE, I also worked on several studies about primary healthcare reforms in Australia and Canada.

In June 2015, I will go back to IQ Healthcare in the Netherlands. I'll continue working on problem-based research projects, and aim to finish a PhD thesis about underperforming healthcare professionals. I want to thank my colleagues at CPHCE for the interesting and pleasant time I had at the Centre and look forward to any future opportunities for collaboration.

# Staff Membership of External Committees

Committee	Name
ACI Chronic Care Network Inaugural Executive Committee	Julie McDonald
American Medical Informatics Association (AMIA) International Affairs Committee	Siaw-Teng Liaw
American Medical Informatics Association (AMIA) Ethics Committee	Siaw-Teng Liaw
Asia Pacific HIA Network	Patrick Harris, Fiona Haigh
Australia Primary Health Care Research Institute Knowledge Exchange Committee	Nicholas Zwar
Australian Family Physician Editorial Board	Nicholas Zwar
Australian Primary Care Research Network Management Committee (Chair)	Nicholas Zwar
Australasian Association for Academic Primary Care (President)	Nicholas Zwar
Australasian College of Health Informatics Council	Siaw-Teng Liaw
Baker IDI NHMRC Diabetes Secondary Prevention Guideline Advisory Group	Mark Harris
BMC Public Health Editorial Board	Patrick Harris
Certified Health Informatician Australasia Board	Siaw-Teng Liaw
Coalition of Research into Aboriginal Health	Elizabeth Harris
Department of Veterans Affairs: Coordinated Veterans Care Advisory Committee	Mark Harris
eHealth Informatics Journal Editorial Board	Siaw-Teng Liaw
Good Beginnings Australia Program Advisory Committee	Lynn Kemp
GP Synergy Board Director	Siaw-Teng Liaw
Heart Foundation Prevention in Practice Advisory Group	Gawaine Powell Davies
HeartSmart Committee Warwick Farm	Joan Silk
Health Informatics Society of Australia (Board Director)	Siaw-Teng Liaw
Health Informatics Conference (HIC) Scientific Committee	Siaw-Teng Liaw
Ingham Health Research Institute Scientific Advisory Committee	Lynn Kemp, Siaw-Teng Liaw
Ingham Institute Early Years Research Group	Rebekah Grace
Inner Western Sydney Medicare Local Board	Mark Harris
Informatics in Primary Care, Section Editor	Siaw-Teng Liaw
International Medical Informatics Association Academy Taskforce	Siaw-Teng Liaw
International Primary Care Respiratory Group Education Committee	Nicholas Zwar
International Association for Impact Assessment Publications Committee and Health Section	Patrick Harris
International Journal of Family Medicine Editorial Board	Siaw-Teng Liaw
International Journal of Medical Informatics Editorial Board	Siaw-Teng Liaw

Committee	Name
International Union for Health Promotion and Education (IUHPE). Global Working Group on Health Impact Assessment	Elizabeth Harris
Liverpool Community Drug Action Team	Joan Silk
Lung Foundation COPD-X Evaluation Committee	Nicholas Zwar
Lung Foundation COPD-X Concise Guide for Primary Care Writing Committee	Nicholas Zwar
Medical Journal of Australia Content Review Committee	Mark Harris
National Diabetes Data Working Group	Mark Harris
National Heart Foundation Clinical Issues Committee	Mark Harris, Siaw-Teng Liaw
National Heart Foundation, National Blood Pressure & Vascular Disease Advisory Committee	Nicholas Zwar
NHMRC Prevention and Community Health Committee	Mark Harris
NHMRC Mental Health and Parenting Working Committee	Mark Harris
National Prescribing Service Diagnostics Advisory Committee	Mark Harris
NSW Health Acute Care Taskforce	Siaw-Teng Liaw
NSW Health Keep Them Safe Evaluation Committee	Lynn Kemp
NSW Health Sustained Health Home-visiting Advisory Group	Lynn Kemp
NSW Health Tobacco Senior Officers' Steering Group	Nicholas Zwar
Primary Health Care Research, Evaluation and Development (PHCRED) Strategy Advisory Committee	Mark Harris
Primary Health Care Research Information Service Strategic Advisory Group	Gawaine Powell Davies
RACGP National Research Ethics Committee (Chair)	Siaw-Teng Liaw
RACGP National Standing Committee Research	Siaw-Teng Liaw
RACGP Quality Committee	Mark Harris
RACGP Red Book Task Force	Mark Harris
RACGP Smoking Cessation Guidelines Content Advisory Group (Chair)	Nicholas Zwar
RACGP SNAPW guide working group (Chair)	Mark Harris(chair), Nicholas Zwar
SE Sydney Medicare Local Board	Nicholas Zwar
SE Sydney Medicare Local Map of Medicine project steering group	Nicholas Zwar
SE Sydney Medicare Local Needs Assessment Steering Group (Chair)	Nicholas Zwar
SE Sydney Primary Health Care Partnership COmmittee	Gawaine Powell Davies
SESLHD Medicare Locals and Health Collaborative Committee	Gawaine Powell Davies Julie McDonald
SESLHD/CPHCE Research Hub Operations Committee	Mark Harris Gawaine Powell Davies Julie McDonald
SESLHD Integrated Care Strategy Working Party	Julie McDonald

Committee	Name
Social Determinants of Health Alliance	Lynn Kemp
STAR Association Research Advisory Board	Rebekah Grace
SWSLHD Aboriginal Child and Family Health Steering Committee	Rebekah Grace, Nick Rosser
SWSLHD Population Health Division Executive	Lynn Kemp
SWSLHD Research & Teaching Committee	Siaw-Teng Liaw
SWSLHD-SWSML Integrated Health Committee member	Siaw-Teng Liaw
SWSML Information Technology Committee	Siaw-Teng Liaw
SWSML Universities Committee	Siaw-Teng Liaw
WaranWarin Steering Committee	Elizabeth Comino, Rebekah Grace, Nick Rosser
Westmead Breast Cancer Institute Research Advisory Committee	Upali Jayasinghe
WHO Western Pacific Regional Office Thematic Working Group on Health Impact Assessment	Patrick Harris



KOHI, Korea Human Resource Development Institute for Health & Welfare, which is an affiliate agency of Ministry of Health and Welfare in Korea, visited CPHCE on 7th Nov 2014



# PUBLICATIONS

## Book Chapters

1. Jayasinghe U, Harris MF. Quality of life of Australian chronically-ill adults: smoking has more effect on females than males. In: Bohnet-Joschko B, Boutsoli Z, editors. Intercultural dialogue on health economics, management and policy: challenges and chances. Athens, Greece: Athens Institute for Education and Research; 2014. p. 11-28.
2. MacDonald A, Goff W, Hopps K, Kaplun C, Rogers S. Starting School: Synthesis and Analysis. In: Perry B, Dockett S, Petriwskyj A, editors. Transitions to School - International Research, Policy and Practice. International perspectives on early childhood education and development. Dordrecht Heidelberg New York London: Springer; 2014. p. 219-27.
3. Rahimi A, Liaw ST, Ray PK, Taggart J, Yu H. Ontology for data quality and chronic disease management: a literature review. Chapter xx In Healthcare Informatics and Analytics: Emerging Issues and Trends; 2014

## Journal Articles

1. Ansari S, Hosseinzadeh H, Dennis S, Zwar N. Patients' perspectives on the impact of a new COPD diagnosis in the face of multimorbidity: a qualitative study. *npj Primary Care Respiratory Medicine*. 2014;24:14036-.
2. Arora A, Lam ASF, Karami Z, Do L, Harris M. How readable are Australian paediatric oral health education materials. *BMC Oral Health*. 14: 111 DOI 10.1186/1472-6831-14-111.
3. Arora A, Nguyen D, Do QV, Nguyen B, Hilton G, Do LG, et al. 'What do these words mean?' A qualitative approach to explore oral health literacy in Vietnamese immigrant mothers in Australia. *Health Education Journal*. 2014;73(3):303-12.
4. Baum F, Lawless A, Delany T, Macdougall C, Williams C, Broderick D, et al. Evaluation of Health in All Policies: concept, theory and application. *Health Promotion International*. 2014;29(suppl 1):i130-i42.
5. Chok HN, Thornell M, Maxwell M, Wise M, Sainsbury P. Population health services can influence land use planning. *Australian and New Zealand Journal of Public Health*. 2014;38(3):290-1.

6. Cummins AM, Denney-Wilson E, Homer CSE. The experiences of new graduate midwives working in midwifery continuity of care models in Australia. *Midwifery*. 2015;31(4):438-44.
7. Delany T, Harris P, Williams C, Harris E, Baum F, Lawless A, et al. Health Impact Assessment in New South Wales & Health in All Policies in South Australia: differences, similarities and connections. *BMC Public Health*. 2014;14(1):699-.
8. Denney-Wilson E, Robinson A, Laws R, Harris MF. Development and feasibility of a child obesity prevention intervention in general practice: The Healthy 4 Life pilot study. *Journal of Paediatrics and Child Health*. 2014;50(11):890-4.
9. Eastwood J, Kemp L, Jalaludin B. Explaining ecological clusters of maternal depression in South Western Sydney. *BMC Pregnancy and Childbirth*. 2014;14(1):47-.
10. Eastwood JG, Jalaludin BB, Kemp LA. Realist explanatory theory building method for social epidemiology: a protocol for a mixed method multilevel study of neighbourhood context and postnatal depression. *SpringerPlus*. 2014;3(1):12-.
11. Eastwood JG, Jalaludin BB, Kemp LA, Phung HN. Bayesian hierarchical spatial regression of maternal depressive symptoms in South Western Sydney, Australia. *SpringerPlus*. 2014;3(1):55-.
12. Fakhri A, Maleki M, Gohari M, Harris P. Investigating underlying principles to guide health impact assessment. *International Journal of Health Policy and Management*. 2014;3(1):17-22.
13. Faruqi N, Lloyd J, Ahmad R, Yeong LL, Harris M. Feasibility of an intervention to enhance preventive care for people with low health literacy in primary health care. *Australian Journal of Primary Health*. 2014.
14. Friesen EL, Phuah T, Comino EJ. Writing conference abstracts: a guide for Rehabilitation and Assistive Technology practitioners. *Journal of Assistive, Rehabilitative & Therapeutic Technologies*. 2014;2(0).
15. Frunza M, Pascalev A, Krastev Y, Ilieva A. A comparative analysis of the attitudes of Bulgarian and Romanian stakeholders towards living organ donation. *Revista de Cercetare si Interventie Sociala*. 2014;47:272-90.
16. Fuller J, Koehne K, Verrall CC, Szabo N, Bollen C, Parker S. Building chronic disease management capacity in General Practice: The South Australian GP Plus Practice Nurse Initiative. *Collegian*. 2014.
17. Gallagher R, Zelestis E, Hollams D, Denney-Wilson E, Kirkness A. Impact of the Healthy Eating and Exercise Lifestyle Programme on depressive symptoms in overweight people with heart disease and diabetes. *European Journal of Preventive Cardiology*. 2014;21(9):1117-24.
18. Gardner K, Henry A, Thou S, Davis G, Miller T. Improving VBAC rates: the combined impact of two management strategies. *Australian and New Zealand Journal of Obstetrics and Gynaecology*. 2014;54(4):327-32.
19. Goldstein D, Bell ML, Butow P, Sze M, Vaccaro L, Dong S, et al. Immigrants' perceptions of the quality of their cancer care: an Australian comparative study, identifying potentially modifiable factors. *Annals of Oncology*. 2014;25(8):1643-9.
20. Grace R, Bowes J, Elcombe E. Child Participation and Family Engagement with Early Childhood Education and Care Services in Disadvantaged Australian Communities. *International Journal of Early Childhood*. 2014;46(2):271-98.
21. Harris M, Litt J, Russell G, Mazza D, Lloyd J, Zwar N, Taylor R, Driel MV, Mar CD, Krastev Y et al: 069 Facilitating Implementation of Guidelines for the Prevention of Vascular Disease In General Practice. *BMJ Quality & Safety* 2013, 22(Suppl 1):A34.
22. Harris E, Lloyd JE. *Inequities*. Oxford Bibliographies. 2014.
23. Harris MF, Spooner CJ. Weight loss options in general practice. *The Medical Journal of Australia*. 2014; 201(4):184-5.
24. Harris MF, Zwar NA. Reflections on the history of general practice in Australia. *The Medical Journal of Australia*. 2014;201(1):37-40.
25. Harris P, Gleeson D. Assessing the impact of the Trans-Pacific Partnership Agreement on the health of Australians. *Australian and New Zealand Journal of Public Health*. 2014;38(5):496-.
26. Harris P, Haigh F, Thornell M, Molloy L, Sainsbury P. Housing, health and master planning: rules of engagement. *Public Health*. 2014; 128(4):354-9.

27. Harris P, Sainsbury P, Kemp L. The fit between health impact assessment and public policy: Practice meets theory. *Social Science & Medicine*. 2014; 108(C):46-53.
28. Harris-Roxas B, Haigh F, Travaglia J, Kemp L. Evaluating the impact of equity focused health impact assessment on health service planning: three case studies. *BMC Health Services Research*. 2014; 14(1):371-.
29. He P, Yuan Z, Liu Y, Li G, Lv H, Yu J, et al. An evaluation of a tailored intervention on village doctors use of electronic health records. *BMC Health Services Research*. 2014;14(1):217-.
30. Jayasuriya R, Jayasinghe UW, Wang Q. Health worker performance in rural health organizations in low- and middle-income countries: Do organizational factors predict non-task performance? *Social Science & Medicine*. 2014;113(C):1-4.
31. Joshi C, Jayasinghe UW, Parker S, Del Mar C, Russell G, Lloyd J, et al. Does health literacy affect patients' receipt of preventative primary care? A multilevel analysis. *BMC Family Practice*. 2014;15(1).
32. Laws R, Campbell KJ, van der Pligt P, Russell G, Ball K, Lynch J, et al. The impact of interventions to prevent obesity or improve obesity related behaviours in children (0–5 years) from socioeconomically disadvantaged and/or indigenous families: a systematic review. *BMC Public Health*. 2014;14(1):779-.
33. Liaw ST, Taggart J, Yu H, Lusignan SD, Kuziemy C, Hayen A. Integrating electronic health record information to support integrated care: Practical application of ontologies to improve the accuracy of diabetes disease registers. *Journal of Biomedical Informatics*. 2014;52(C):364-72.
34. Liu Y, Yuan Z, Liu Y, Jayasinghe UW, Harris MF. Changing community health service delivery in economically less-developed rural areas in China: impact on service use and satisfaction. *BMJ Open*. 2014;4(2):e004148-e.
35. McDonald J, Webster V, Knight J, Comino E. The Gudaga study: Development in 3-year-old urban Aboriginal children. *Journal of Paediatrics and Child Health*. 2014;50(2):100-6.
36. Mills SL, Pumarino J, Clark N, Carroll S, Dennis S, Koehn S, et al. Understanding how self-management interventions work for disadvantaged populations living with chronic conditions: protocol for a realist synthesis. *BMJ Open*. 2014;4(7):e005822-e.
37. Patel B, Patel A, Jan S, Usherwood T, Harris M, Panaretto K, et al. A multifaceted quality improvement intervention for CVD risk management in Australian primary healthcare: a protocol for a process evaluation. *Implementation Science*. 2014;9(1).
38. Pathmanathan N, Balleine RL, Jayasinghe UW, Bilinski KL, Provan PJ, Byth K, et al. The prognostic value of Ki67 in systemically untreated patients with node-negative breast cancer. *Journal of Clinical Pathology*. 2014;67(3):222-8.
39. Pillay M, Dennis S, Harris MF. Quality of care measures in multimorbidity. *Aust Fam Physician*. 2014;43(3):132-6.
40. Pineault R, Borgès Da Silva R, Prud'homme A, Fournier M, Couture A, Provost S, et al. Impact of Québec's healthcare reforms on the organization of primary healthcare (PHC): a 2003-2010 follow-up. *BMC Health Services Research*. 2014;14(1):229-.
41. Radford K, Mack HA, Robertson H, Draper B, Chalkley S, Daylight G, et al. The Koori Growing Old Well Study: investigating aging and dementia in urban Aboriginal Australians. *International Psychogeriatrics*. 2014;26(06):1033-43.
42. Rahimi A, Liaw ST, Ray P, Taggart J, Yu H. Ontological specification of quality of chronic disease data in EHRs to support decision analytics: a realist review. *Decision Analytics*. 2014;1(1):5-.
43. Rahimi A, Liaw ST, Taggart J, Ray P, Yu H. Validating an ontology-based algorithm to identify patients with Type 2 Diabetes Mellitus in Electronic Health Records. *International Journal of Medical Informatics*. 2014;83(10):768-78.
44. Rahimi A, Parameswaran N, Ray PK, Taggart J, Yu H, Liaw ST. Development of a Methodological Approach for Data Quality Ontology in Diabetes Management. *International Journal of E-Health and Medical Communications*. 5(3):58-77.





45. Redfern J, Usherwood T, Harris MF, Rodgers A, Hayman N, Panaretto K, et al. A randomised controlled trial of a consumer-focused e-health strategy for cardiovascular risk management in primary care: the Consumer Navigation of Electronic Cardiovascular Tools (CONNECT) study protocol. *BMJ Open*. 2014;4(2):e004523-e.
46. Rose VK, Harris MF. Experiences of self-management support from GPs among Australian ethnically diverse diabetes patients: A qualitative study. *Psychology, Health & Medicine*. 2015;20(1):114-20.
47. Schmied V, Fowler C, Rossiter C, Homer C, Kruske S, Barclay L, et al. Nature and frequency of services provided by child and family health nurses in Australia: Results of a national survey. *Australian Health Review*. 2014;38(2):177-85.
48. Soccio J, Brown M, Comino E, Friesen E. Women with problematic drug and alcohol use have higher rates of trauma and abnormal Pap smears. *Australian Nursing and Midwifery Journal*. 2014;22(1):35.
49. Stanley AJ, Hasan I, Crockett AJ, van Schayck OCP, Zwar NA. Validation of the COPD Diagnostic Questionnaire in an Australian general practice cohort: a cross-sectional study. *Primary Care Respiratory Journal*. 2014;23(1):92-7.
50. Stewart S, Stocks NP, Burrell LM, De Looze FJ, Esterman A, Harris M, et al. More rigorous protocol adherence to intensive structured management improves blood pressure control in primary care: Results from the Valsartan Intensified Primary care Reduction of Blood Pressure study. *Journal of Hypertension*. 2014;32(6):1342-50.
51. Vagholkar S, Zwar N, Jayasinghe UW, Denney-Wilson E, Patel A, Campbell T, Harris MF. Influence of cardiovascular absolute risk assessment on prescribing of antihypertensive and lipid-lowering medications: a cluster randomized controlled trial. *American Heart Journal* 2014;167:28-35
52. Wong ST, Black C, Cutler F, Brooke R, Haggerty JL, Levesque JF. Patient-reported confidence in primary healthcare: are there disparities by ethnicity or language? *BMJ Open*. 2014;4(2):e003884-e.
53. Woolfenden S, Eapen V, Williams K, Hayen A, Spencer N, Kemp L. A systematic review of the prevalence of parental concerns measured by the Parents' Evaluation of Developmental Status (PEDS) indicating developmental risk. *BMC Pediatrics*. 2014;14(1):231-.

## Conference Presentations (oral presentations and posters)

1. Comino EJ, Islam MF, Harris MF. Predictors of monitoring of control among 45 and Up participants with diabetes: a linkage study. Primary Health Care Research and Information Service (PHCRIS) Conference; July 2014; Canberra.
2. Comino EJ, Islam MF, Harris MF. The impact of enhanced primary care on hospitalisation for people with diabetes: a record linkage study. Primary Health Care Research and Information Service (PHCRIS) Conference; July 2014; Canberra.
3. Comino E. Immunisation coverage among a birth cohort of Aboriginal pre-school children in an urban community. Sixth Annual Research Symposium Public health aspects of infectious disease control. School of Public Health and Community Medicine, University of NSW, Sydney.
4. Comino E, Friesen E. Understanding practitioner research needs in community health: a Research Culture and Capacity Review. Primary Health Care Research and Information Service (PHCRIS) Conference; July 2014; Canberra.
5. Elcombe E. Electronic data collection in community health. I. Ingham Research Show Case. Thomas and Rachel Moore Education Centre, Liverpool Hospital.
6. Elcombe E, Grace R, Kemp L, Comino E. Bulundidi Gudaga - a sustained home visiting program for Aboriginal infants and their mothers: Where are we now? Ingham Research Show Case; Thomas and Rachel Moore Education Centre, Liverpool Hospital.
7. El-Haddad N, Faruqi N, Spooner C, Denney-Wilson E, Harris MF. Improving health literacy for weight management in overweight or obese non-English speaking migrants in primary health care: A systematic review of quantitative and qualitative data. Australian & New Zealand Obesity Society (ANZOS); 2014/09/15; Sydney.
8. El-Haddad N, Faruqi N, Spooner C, Denney-Wilson E, Harris MF. The role of ethnicity in health literacy for weight management in migrants in primary health care (poster). Primary Health Care Research and Information Service (PHCRIS) Conference; July 2014; Canberra.
9. Faruqi N, Joshi C, Spooner C, Lloyd J, Taggart J, Dennis S, et al. Weight loss interventions targeting knowledge and/or skills of overweight or obese patients in primary healthcare settings: a systematic review (poster). Primary Health Care Research and Information Service (PHCRIS) Conference; July 2014; Canberra.
10. Faruqi N, Stocks N, Denney-Wilson E, Liaw S-T, Spooner C, Lloyd J, Laws R, El-Haddad N, Hermiz O, Harris MF. Better management of weight in general practice - study protocol. Paper presented at the Australian and New Zealand Obesity Society Annual Scientific Meeting; 16-18 October 2014; Sydney.
11. Harris MF, Islam MF, Comino EJ, Jalaludin B, Chen J, Bauman A. Predictors of receipt of adult health assessment among New South Wales residents: a linkage study in Australian general practice. Primary Health Care Research and Information Service (PHCRIS) Conference; 2014; Canberra.
12. Grace RL, Kaplun C, Dockett S, Perry B, Knight J. Gudaga goes to school: School transition and achievement for the children of the Gudaga longitudinal cohort study. Linking Up for Kids; 2014, Sydney.
13. Grace RL, Smith H, McCann Y, Flaxman S, Tredoux J, Kemp L. Volunteer Family Connect: A best practice model of volunteer home visiting services to support vulnerable families. Child Aware Conference; 2014; Melbourne, Victoria
14. Greiver M, Sullivan F, Liaw ST, Tu K, de Lusignan S, Birtwhistle R, Puro J. Forum: EMR data linkage: International perspectives on challenges and solutions. NAPCRG Conference 21-25 Nov 2014, New York, USA
15. Harris M, Caterson I, Stocks N, Denney-Wilson E, Wittert G, Spooner C. Implementation of NHMRC Obesity guideline recommendations. Paper presented at the GP14; 9-11 October 2014; Adelaide.
16. Harris M, Spooner C, Stocks N, Denney-Wilson E, Faruqi N. Obesity prevention and management: Identifying needs and tailoring strategies in Medicare Locals and practices (Workshop). Primary Health Care Research and Information Service (PHCRIS) Conference; July 2014; Canberra.
17. Harris MF, Islam MF, Comino EJ, Jalaludin B, Chen J, Bauman A. Preventive health assessments in Australian general practice: Analysis of linked data from a cohort study. North American Primary Care Research Group (NAPCRG) Conference; 2014; New York.



18. Harris M, Weller D, Ward R, Chin M, Meiser B, Crowley M. Attitudes to cancer follow-up care in general practice.. World Cancer Congress; 3-6 Dec 2014; Melbourne, Australia
19. Harris M, Parker S, Litt J, Russell G, Mazza D, Lloyd J, Zwar N, van Driel M, Del Mar C, Smith J. Facilitating practice improvement in preventive care: Interim findings from the PEP Study. Primary Health Care Research and Information Service (PHCRIS) Conference; July 2014; Canberra.
20. Harris MF, Parker S, Jayasinghe U, Del Mar C, Van Driel M, Russell G, et al. Health Literacy and Preventive Care in Australian General Practice. North American Primary Care Research Group 2014 Annual Meeting. New York, New York.
21. Harris MF, Parker S, Litt J, Russell G, Mazza D, Lloyd J, et al. Putting preventive guideline recommendations into general practice: a cluster randomised control trial. 3rd Annual NHMRC Research Translation Faculty Symposium. Melbourne, Australia.
22. Lane R, Dumble J, Litt J, Harris M, Mazza D, Zwar N, van Driel M, Parker S, Smith J, Russell G. Preventive Evidence into Practice: What influences the impact of a facilitated intervention to improve the prevention of vascular disease in general practice. Primary Health Care Research and Information Service (PHCRIS) Conference; July 2014; Canberra.
23. Liaw ST, Taggart J, Yu H. Are routinely collected data in GP&PHC EHRs fit for purpose? Paper presentation. NAPCRG Conference 21-25 Nov 2014, New York, USA
24. Liaw ST, Taggart J, Yu H. EHR-based disease registries to support integrated care in a health neighbourhood: an ontology-based methodology. Medical Informatics Europe Aug 2014, Istanbul, Turkey.
25. Liaw ST. Invited presentation. How healthcare analytics can assist in the prevention and management of chronic disease. Healthcare Analytics Conference, 10-11 Dec 2014 Marriott Hotel, Sydney, Australia
26. Liaw ST. Invited speaker. Measuring the performance of primary care in Australia: the potential for using EHR-based disease registries. APHID Study Forum 28 Nov 2014, Sydney
27. Liaw ST. Invited Panelist. ACMI History of Informatics Panel Presentation: "Evolution of Informatics Themes in Primary Care & Population Health." AMIA Fall Conference 16-20 Nov 2014. Washington DC, US.
28. Litt J, Harris M, Russell G, Lane R, Mazza D, Lloyd J, Zwar N, van Driel M, Del Mar C, Parker S, Smith J. The PEP study: Facilitating implementation of guidelines for the prevention of vascular disease in general practice - what is inside the black box? Primary Health Care Research and Information Service (PHCRIS) Conference; July 2014; Canberra.
29. Mazza D, Pearce C, Huang N, Liaw ST, Britt H. Workshop: Using Routinely Collected General Practice Data to Inform Practice and Policy: What do we have now, where do we need to go and how are we going to get there? Primary Health Care Research and Information Service (PHCRIS) Conference; July 2014; Canberra. Parker S, Litt J, Russell G, Mazza D, van Driel M, Del Mar C, Smith J, Zwar N, Taylor R, Harris M. Recording of vascular risk factors in general practice: Baseline findings from the Preventive Evidence into Practice (PEP) Study. Primary Health Care Research and Information Service (PHCRIS) Conference; July 2014; Canberra.
30. Rosser N, Knight J, Kemp L, Beetson K, Woodall C, Comino E. "The WHAT" and "The HOW" Translating Research into Practice. Ingham Research Show Case. Thomas and Rachel Moore Education Centre, Liverpool Hospital.
31. Schütze H, Harris E., Jackson Pulver L., Harris M. Improving Indigenous status identification systems in primary care: a novel approach using Aboriginal unannounced standardised patients. Primary Health Care Research and Information Service (PHCRIS) Conference; July 2014; Canberra.
32. Schütze, H. Cultural respect in general practice in Sydney: Follow-up findings. La Perouse Aboriginal Health Link Advisory Group, La Perouse Aboriginal Community Controlled Health Service; 13 August 2014; La Perouse.



## Reports

1. Flatau P, Conroy E, Spooner CJ, Edwards R, Eardley T. How significant is parental influence in explaining homelessness in Australia? Perth: AHURI, 2014 1445-3428.
2. Grace RL, Bowes J. Closing the gap in the early childhood years: Prevention and early intervention approaches to parenting education, early childhood education and health for Indigenous children and families in Australia. Closing the Gap Clearinghouse. Canberra, 2014 978-1-74249-535-42201-845X.
3. Hirono KT, Gleeson D, Haigh F, Harris P. The Trans Pacific Partnership Agreement negotiations and the health of Australians: A policy brief. Centre for Health Equity Training, Research and Evaluation, Centre for Primary Health Care and Equity, UNSW Australia., 2014.
4. Schutze H, Shell A, Caldwell L, Brodaty H. Improving outcomes for a timely diagnosis and management of dementia in general practice - Final Report. UNSW Australia: Sydney: Dementia Collaborative Research Centre, 2014.
5. Spooner CJ. Substance Use and Young People Framework. Sydney: NSW Ministry of Health, 2014 9781741870657.





# FINANCIALS

## Centre for Primary Health Care and Equity

<b>Statement of Financial Performance</b>				
<b>for the Year Ended 31 December 2014</b>				
	<b>Notes</b>	<b>2014</b>	<b>2013</b>	
		\$000	\$000	
<b>Revenue</b>				
Research Revenue		\$1,657	\$2,973	
Consulting/Commercial Activities		\$440	\$931	
Other Research Revenue		\$124	\$129	
UNSW Contributions		\$399	\$332	
UNSW Medicine Contributions	ii/iii	\$463	\$307	
Other Revenue		\$629	\$206	
<b>Total Revenue</b>		<b>\$3,712</b>	<b>\$4,031</b>	
<b>Expenses</b>				
People Costs, oncosts & other		\$3,997	\$4,031	
Staff Costs				
Scholarship Stipends		\$85	\$111	
Contract & Consulting Services		\$299	\$396	
Consumables		\$29	\$31	
Travel		\$166	\$145	
Equipment < than \$5,000		\$11	\$26	
Other Expenses		\$525	\$238	
<b>Total Expenses</b>		<b>\$5,112</b>	<b>\$4,978</b>	
<b>Net Result before Depreciation</b>		<b>-\$1,400</b>	<b>-\$100</b>	
Depreciation		\$3	\$3	
<b>Net Result after Depreciation</b>	iv	<b>-\$1,403</b>	<b>-\$103</b>	

### Notes to the Statement of Financial Performance

- i) The financial statement is prepared on an accrual basis for the year ended 31 December 2014, whilst on a cash basis in 2013. As a result of the change in methodology, 2013 comparatives were restated as follows:

	Restated 2013	As per 2013 Statement
Total revenue	\$4,878k	\$4,644k
Total expenses	\$4,978k	\$4,976k

- ii) The Centre (CPHCE) also recognises in-kind contributions provided to it by UNSW that are not brought to account in the Statement of Financial Performance - this includes space occupied at Level 3 Building G27 - AGSM, Randwick.
- iii) Includes contribution to salaries of eight (8) CPHCE staff and Non-salary Fellowship Enhancements for Professor Mark Harris & Dr Jane Lloyd
- iv) The 2014 net result after Depreciation (deficit) for the year ended 31 December 2014 utilises the carry forward surpluses from previous years.

# CONTACT US

## Main Campus

**Executive Director: Professor Mark Harris**

UNSW Australia

UNSW SYDNEY NSW 2052

**Tel:** +61 2 9385 8384 **Fax:** +61 2 9385 8404

**Email:** [m.f.harris@unsw.edu.au](mailto:m.f.harris@unsw.edu.au)

**Director: Terry Findlay**

UNSW Australia

UNSW SYDNEY NSW 2052

**Tel:** +61 2 9385 8401 **Fax:** +61 2 9385 8404

**Email:** [t.findlay@unsw.edu.au](mailto:t.findlay@unsw.edu.au)

## Off campus research units

**Centre for Health Equity Training Research and Evaluation (CHETRE)**

**Director: Karen Edwards**

Locked Mail Bag 7103,

Liverpool BC NSW 1871

**Tel:** +61 2 8738 9310 **Fax:** +61 2 9602 8052

**Email:** [mary.knopp@sswahs.nsw.gov.au](mailto:mary.knopp@sswahs.nsw.gov.au)

**General Practice Unit**

**Director: Professor Siaw-Teng Liaw**

Fairfield Hospital

PO Box 5

Fairfield NSW 1860

**Tel:** +61 2 9616 8520 **Fax:** +61 2 9616 8400

**Email:** [siaw@unsw.edu.au](mailto:siaw@unsw.edu.au)

**Health Equity Research and Development Unit (HERDU)**

**Director: A/Prof Elizabeth Harris**

SLHD, Level 2, Marsden St, Camperdown

**Tel:** +61 2 9515 1234

**Email:** [e.harris@unsw.edu.au](mailto:e.harris@unsw.edu.au)

Please direct any inquiries regarding the Annual Report to Terry Findlay at [t.findlay@unsw.edu.au](mailto:t.findlay@unsw.edu.au).

Further information about the Centre for Primary Health Care and Equity can be found at [www.cphce.unsw.edu.au](http://www.cphce.unsw.edu.au).





