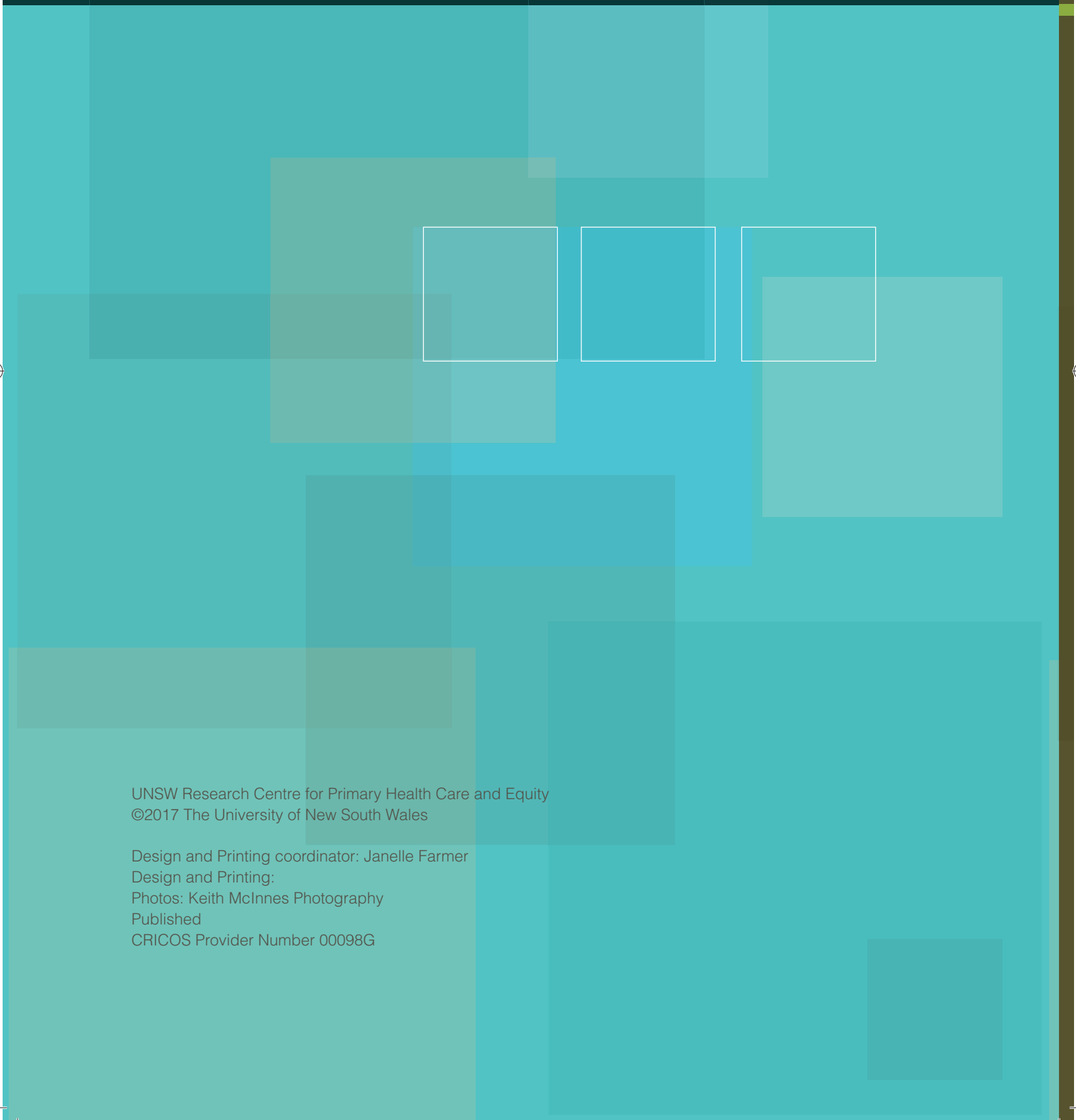


UNSW Research Centre for Primary Health Care and Equity Annual Report 2016



UNSW Research Centre for Primary Health Care and Equity
©2017 The University of New South Wales

Design and Printing coordinator: Janelle Farmer
Design and Printing:
Photos: Keith McInnes Photography
Published
CRICOS Provider Number 00098G



CONTENTS

ACKNOWLEDGMENT	2
BACKGROUND	3
MANAGEMENT	4
OUR STAFF	11
RESEARCH	14
Prevention and management of chronic disease stream	15
Primary health care system development stream	18
Action for equity stream	20
Primary health care informatics stream	23
Research and development hubs	25
Researcher profile	29
FELLOWSHIP, SCHOLARSHIPS AND AWARDS	30
Fellowships	30
Scholarships	30
Awards	30
TEACHING	32
PhD Research Students	34
ILP Research Students	36
Masters Research Students	36
PhD student profile	37
KNOWLEDGE EXCHANGE & CAPACITY BUILDING	38
List of Events	38
2016 CPHCE Annual Forum	39
COMPARE-PHC Health Literacy Symposium 2016	40
The Role of the Health System in Reducing Health Inequity Seminar	41
ACI Health Care Neighbourhoods and Integrated Care Workshop	42
Staff Membership of External Committee	43
PARTNERS AND AFFILIATES	44
List of Visiting Academics	48
Visiting Researcher Profile	49
PUBLICATIONS	50
FINANCIAL	56
CONTACT US	57



ACKNOWLEDGMENT

It is a pleasure to be able to recognise those who support the Centre and work alongside us towards our aim of better fairer health and health care in the community.

Our partners include a familiar roll call of organisations, many of whom have been with us for many years: the Faculty and University within which we work, the NSW Ministry of Health who also provide essential infrastructure funding through a Population Health and Health Services Research Support Program grant, the NSW Agency for Clinical Innovation, the Bureau of Health Information Clinical, the Excellence Commission and the South Western Sydney Local Health District and the Ingham Institute for Applied Medical research who support CHETRE and the Academic General Practice Unit, with the Ingham Institute also providing accommodation. We are grateful to the Sydney Local Health District for its support of the Health Equity Research and Development Unit (HERDU) and the South Eastern Sydney Local Health District for its support of the South Eastern Sydney Research Collaboration Hub (SEaRCH). We also thank the funding bodies who have supported our research: NHMRC, ARC, APHCRI, to name a few.

Those working alongside us also include many familiar names: the School of Public Health and Community Medicine, the Faculty of Built Environment, the Social Policy Research Centre, the Australian Institute for Health Innovation and other UNSW researchers and research groups whose work intersects with ours; researchers from universities across Australia and in Canada, New Zealand, the USA and the UK; and people from the many government and non-government organisations including the Australian and NSW Council of Social Services with whom we work and who are listed in the Partners and Affiliations section. We are grateful also to the clinicians and service providers across all sectors who take the time to participate in our research and take an interest in our findings.

We acknowledge particularly our partnerships with the Local Health Districts and Primary Health Networks in central Sydney, south western Sydney, south eastern Sydney and western NSW and the Translational Cancer Research Network. These partnerships keep us in touch with the real world of health services and enable us to see how our findings apply to primary health care as it is practised.

We are grateful to the members of our Steering Committee and Advisory Committee for the support and guidance they give us. Many of them have been with us for a long time, the Chairs, Professors Terry Campbell and Ian Webster since the Centre was formed.

Finally, we thank our staff. They live with short contracts, uncertain funding, and the difficulty of building coherent research programs on an often unpredictable funding base. The work reported here shows how well they continue to respond to this challenge. What is not reflected here but is equally important is the spirit of cooperation and mutual respect with which this is done.



BACKGROUND

The Centre for Primary Health Care and Equity has been a UNSW research centre since 2005, building on two groups that had been working together since they were founded in 1996. We operate from three locations: on campus at Kensington, at Liverpool (the Centre for Health Equity Training, Research and Evaluation, "CHETRE" and the Academic General Practice Unit) and at Camperdown (the Health Equity Research and Development Unit, "HERDU")

Our mission is to contribute to better, fairer health and health care in the community by conducting research, evaluation and development that strengthens primary health care and addresses health inequities. In 2016 our research streams were:

- Prevention and Management of Chronic Disease
- Primary Health Care System Development
- Action for Equity
- Primary Health Care Informatics

We support the uptake of our research findings in policy and practice, and undertake research capacity building.

We work across these areas at national, state and local levels. This enables us to investigate health issues at the level of individuals and communities, services and systems as well as putting them in an international context.



MANAGEMENT

2016 STEERING COMMITTEE

The Steering Committee oversees the work of the Centre, ensuring that it pursues its objectives in line with its terms of reference and is financially sound. The Committee met on 14 April 2016.

CHAIR

Professor Terry Campbell Senior Vice Dean (Academic), Faculty of Medicine, UNSW Australia

MEMBERS

- Dr Teresa Anderson** Chief Executive, Sydney Local Health District
Mr Terry Findlay Director, Centre for Primary Health Care and Equity, UNSW Sydney
Professor Mark Harris Executive Director, Centre for Primary Health Care and Equity, UNSW Sydney
Professor Ilan Katz Professor, Social Policy Research Centre, UNSW Sydney
Ms Amanda Larkin Chief Executive, South Western Sydney Local Health District
Professor Raina MacIntyre Head, School of Public Health and Community Medicine, UNSW Sydney
Professor Bill Randolph Director, City Futures Research Centre, Faculty of the Built Environment, UNSW Sydney
Dr Greg Stewart Director, Primary and Integrated Health, South Eastern Sydney Local Health District



Terry Findlay



Mark Harris



Theresa Anderson



Ilan Katz



Amanda Larkin



Raina MacIntyre



Bill Randolph



Greg Stewart

SECRETARIAT (NON-VOTING MEMBER)

Ms Sarah Ford Finance Manager, Centre for Primary Health Care and Equity, UNSW Australia



MESSAGE FROM THE CHAIR OF THE STEERING COMMITTEE

There have been significant milestones and developments at the Centre in 2016. A new five year strategic plan has been developed that has involved a rigorous assessment of the Centre's strengths and weaknesses, alignment with the policy and service context in which we operate and identifying strategies to sustain and improve the relevance of our research outputs.

The Centre research streams have been reviewed, reaffirming long standing priorities in equity and informatics and a renewed focus on long term conditions (including mental health), service and system integration and a new theme of health environments that includes the growing area of urban development and its impact on health and wellbeing.

Overall grant and contract income has increased with a significant increase in health service funding to maintain the three research and development hubs and specific evaluation and development projects directly relevant to Local Health Districts. Peer reviewed sources of grant income remains a challenge however at the end of the year the Centre secured a significant NHMRC Project grant in the area of Health Literacy.

Publication levels increased again in 2016 but less significantly than the previous year. Ambitious targets have been set to further improve this measure of performance over the next five years recognising the particular challenge of an applied health services environment.

These achievements reflect the increased work and productivity of research staff. Succession planning for senior researchers and developing existing staff has been a key feature of the year and will be central to the strategy over the next five years. The Chairman of the Advisory Committee has noted the achievements of long standing staff members A/Professor Elizabeth Harris and Dr Julie McDonald who have indicated their intention to retire and these sentiments are echoed by the Steering Committee. I would like to add my personal thanks to them both for their wonderful service over the years and I wish them well in the future. We also noted the promotion of Professor Nicholas Zwar to the position of Dean of the Medical School at Wollongong and his contribution to the Centre over a number of years. Congratulations to Nick on this well-deserved appointment.

One of the strengths of the Centre has been partnerships with health services and this has continued in 2016 with new relationships forged with Primary Health Networks and the establishment of a long term arrangement to provide evaluation and development support to Western NSW LHD. Work with rural health services is expected to increase over the next few years. Within the University there has been increased collaboration under the auspices of the UNSW 2025 strategic theme of Equity including a number of diverse faculties such as Law, Built Environment and Social Policy.

The Steering Committee membership has continued to remain stable throughout the year and I would like to thank members for their contribution and all new and continuing staff for their commitment and hard work. This will be my last Annual Report as I retire from UNSW in July 2017. I have thoroughly enjoyed my time as Chair and my long association with CPHCE and wish it and my successor all the very best for the future.

Chair, Steering Committee





2016 ADVISORY GROUP

The Advisory Group provides strategic advice to the Centre on its research program. It met on 19 April and 27 October 2016

CHAIR

Emeritus Professor Ian Webster School of Public Health and Community Medicine, UNSW Sydney

MEMBERS

Professor William (Bill) Bellew School of Public Health, University of Sydney

Ms Tish Bruce Deputy Director, Ambulatory and Primary Health Care, SE Sydney Local Health District

Kathy Clinch, A/Deputy Director, Primary, Integrated & Community Health SE Sydney Local Health District

Professor Evelyne de Leeuw Director, CHETRE, UNSW Sydney

Terry Findlay Director, CPHCE, UNSW Sydney

Associate Professor Elizabeth Harris Director, HERDU, UNSW Sydney

Professor Mark Harris Executive Director, Centre for Primary Health Care and Equity, UNSW Sydney

Professor Siaw-Teng Liaw Academic General Practice Unit, UNSW, Sydney

Dr Julie McDonald Director, SEaRCH, UNSW, Sydney

Professor Raina MacIntyre Head, School of Public Health and Community Medicine, UNSW Sydney

Associate Professor Virginia Schmied School of Nursing and Midwifery, University of Western Sydney

Miranda Shaw General Manager, Community Health, Sydney Local Health District

Dr Chris Shipway Director Primary Care and Chronic Services, NSW Agency for Clinical Innovation

Vicki Wade Cultural Lead, Aboriginal Health, National Heart Foundation

Dr Christine Walker Chronic Illness Alliance, Victoria

Professor Nicholas Zwar Professor of General Practice, School of Public Health and Community Medicine, UNSW Sydney – resigned October 2016



MESSAGE FROM THE CHAIR OF THE ADVISORY GROUP



As the population ages and medical treatment enables people to survive injury and illness, and as substance use and mental illness increase, the complexity and intractability of medical problems increase. This means the primary health care task is not so much about curing a disease but to support the quality of a person's life and to prevent the onset and progression of these problems in the first place.

There are 23 medical specialties, 63 fields of specialisation and 85 specialist titles now recognised in Australia. This increase in specialisation leads to fragmentation of care and patient confusion at a time when the most pressing need is for generalists, GPs and other primary health clinicians. The Centre for Primary Health Care and Equity (CPHCE) aims to ensure we have a strong community-oriented health system.

The Centre's research, policy development and education brings together the ideals of WHO's 'Health for All' and principles of equity in disadvantaged peoples through its focus on community-based health care. Naturally, this work involves interactions at a one-on-one and local level but it also includes electronic practice-based networks in the management of chronic illness and prevention.

The Advisory Committee wishes to acknowledge the contributions of all staff members, but we especially wish to thank some of our senior staff who have indicated that they will be stepping down from their roles in the Centre in early 2017.

- Associate Professor Liz Harris is stepping down as Director of the Health Equity Research and Development Unit (HERDU) in central Sydney. Liz Harris' enthusiasm has shaped the work of CPHCE, HERDU and unquestionably that of the Centre for Health Equity Research and Evaluation (CHETRE) in south west Sydney. There are south western Sydney communities - Liverpool, Miller, Cabramatta, Claymore, and Tharawal and its Aboriginal community which are indebted to Liz's leadership.
- Another stalwart, Dr Julie McDonald, is stepping down as Director of the South Eastern Sydney Research Collaboration Hub (SEaRCH). Julie's work has been seminal in the Centre's involvement in the integration of primary health care, engagement with vulnerable groups and prevention initiatives.

Although we will miss these long serving staff members it is an opportunity for renewal and appointment of the next generation of leading researchers in the fields of primary health care and equity.

In addition, Professor Nicholas Zwar has led much of the Centre's work in general practice, in team management and chronic disease, especially in chronic respiratory disease. We congratulate him on his appointment as Dean of the Faculty of Medicine, Wollongong University and look forward to his continuing association with CPHCE.

In the course of 2016 the Centre revisited the strategic plan for the next five years. It builds on our strengths, recognises and addresses areas for improvement and identifies the key policy, service, population health and equity issues that provide the context for our work.

The Advisory Committee warmly appreciates the support and leadership of Professor Terry Campbell and the Centre's Executive Director Professor Mark Harris and Director, Mr Terry Findlay.

We admire the work of all the researchers and for those who are moving to other positions, we wish them well in their future careers.

The Committee endorses Professors Campbell and Harris' thanks to the external funding bodies, University, Faculty of Medicine and the School of Public health and Community Medicine for their encouragement and support.

EMERITUS PROFESSOR IAN W WEBSTER AO

Chair, Advisory Group



Professor Mark Harris,
Executive Director



CPHCE BOARD OF DIRECTORS

DIRECTORS

Terry Findlay,
CPHCE UNSW Sydney



Professor Evelyne de Leeuw,
CHETRE SWSLHD



**Associate Professor
Elizabeth Harris,**
HERDU SLHD



Professor Nicholas Zwar,
School of Public Health and
Community Medicine – resigned
October 2016



**Professor
Siaw-Teng Liaw,**
Academic General
Practice Unit
SWSLHD



Dr Julie McDonald,
SEaRCH SESLHD





MESSAGE FROM THE EXECUTIVE DIRECTOR



2016 was a year of change for CPHCE with the imminent retirement of A/Professor Elizabeth Harris and Dr Julie McDonald from their roles as foundation Directors of two of our research hubs – HERDU and SEARCH respectively. Both have made and will continue to make significant contributions to the work of the Centre to create “better, fairer health for all”.

The Centre has continued to remain relevant to the changing environment of the health system and Australian society. Our work has informed the increased use of commissioning by both Local Health Districts and Primary Health Networks, the continued use of information systems to inform and redesign pathways of care and the health and health system impacts in planning the redevelopment of the Sydney urban environment.

We have continued our focus on disadvantaged population groups especially Aboriginal people, refugees and low income people in partnership with local community organisations. We have not only identified health disparities but also evaluated ways to address these through community action and improvements to primary health care. One way of doing this has been through improving health literacy through education and tailoring services to the needs of those with low health literacy.

We continued to engage in prevention research in primary health care and the community. Increasingly this involved the use of innovative approaches from new kinds of health workers (bilingual community health workers) to interactive e- and m-health tools designed to be used in primary health care by those with low e-literacy.

In 2016, there were some emerging areas of research in the management of cancer as a long term condition, advanced care planning and the mental health of people with severe mental illness. In these we have sought to apply some of what we have learnt with other conditions and systems of care for vulnerable and disadvantaged populations.

Professor Nick Zwar retired as one of the Directors of the Centre – we would like to congratulate him on his appointment as Dean of Medicine at the University of Wollongong and hope that he will be able to continue his association with the Centre.

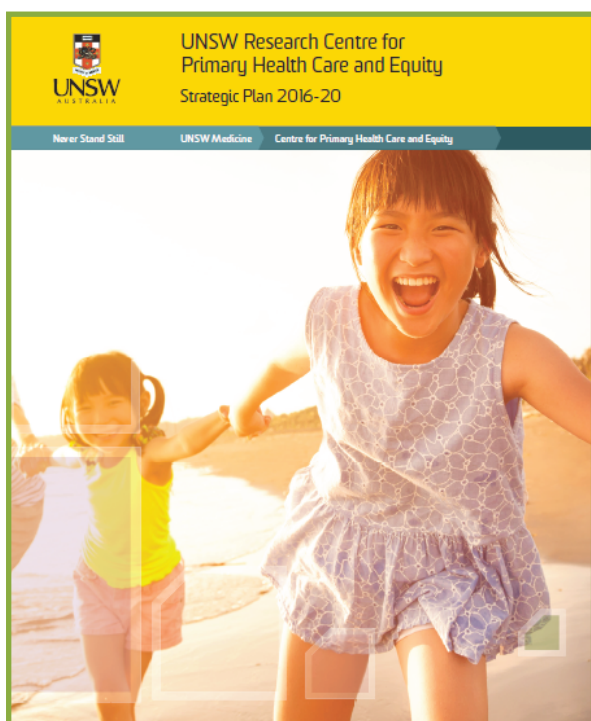
I would like to give thanks to Professor Terry Campbell AM who has been chair of the Steering Committee of CPHCE since its inception in 2005. Over the past 12 years, he has provided leadership, and support to the Centre and to me personally and we are all very grateful for his contribution and guidance. We wish him the best for the future.

PROFESSOR MARK HARRIS

Scientia Professor and Executive Director, Centre for Primary Health Care & Equity, UNSW Sydney



CENTRE FOR PRIMARY HEALTH CARE AND EQUITY STRATEGIC PLAN 2016-2020



CPHCE VISION

Our vision is for
Better, fairer health and wellbeing in the community

This will be achieved through our mission of
Primary Health Care and Equity research, development, evaluation and education

With the overarching goals of

- Promoting inclusion and equity for all groups within society especially the most disadvantaged or vulnerable
- Reform of local, national, and international systems to promote access, equity, prevention, integration and intersectoral action

UNSW 2025 VISION

UNSW will work with people from disadvantaged and marginalised communities, in support of improved social, health and economic wellbeing as part of our global commitment to more equitable and just societies.

UNSW will be recognised as an international exemplar in equity, diversion and inclusion.

UNSW will be recognised globally as a leading university for knowledge exchange. Our engagement with government, industry and the community will enable the translation of our work to advance social progress and economic prosperity.



To download the Strategic Plan 2016-2020 please go to this link:

<https://cphce.unsw.edu.au/news-events/news/2017/01/cphce-strategic-plan-2016-2020>

All staff who worked at the Centre during 2016 (including long term casual staff) are listed below. As at June 2016, there were 38 staff members (26.01 FTEs).



OUR STAFF

PROFESSOR

Professor Mark Harris
Professor Evelyne de Leeuw

MBBS, FRACGP, DRACOG, MD
MSc, MPH, PhD

CENTRE DIRECTOR

Mr Terry Findlay

B.Soc.Stud, MBus

ASSOCIATE PROFESSOR

Associate Professor Pat Bazeley
Associate Professor Elizabeth Comino
Associate Professor Elizabeth Harris
Associate Professor Gawaine Powell Davies
Associate Professor Marilyn Wise

Cert Teaching, BA (Hons), PhD
BVSc, BSc, MPH, PhD
BA, DipEd, DipSoc Work, MPH, PhD
BA (Hons), MHP
BA, MHP

SENIOR RESEARCH FELLOW

Dr Karen Gardner
Dr Ben Harris-Roxas
Dr Upali Jayasinghe
Dr Holly Mack
Dr Jane Lloyd
Dr Julie McDonald
Dr Catherine Spooner
Dr Hairong Yu

BA, MPH, PhD
BSW MPASR, PhD
MSc Maths, GradDip Stats, GradDip Appl Stats, PhD
BSPsych, PhD – resigned September 2016
BAppSc (Health Ed), MPH, PhD
BA, MPH, PhD, RN
BA, MPH, PhD
BEng (Hons), MSc, PhD

RESEARCH FELLOW

Dr Nighat Faruqi
Ms Fiona Haigh
Dr Karolina Kryszynska
Ms Jane Taggart

MBBS, MCCH, PhD
BSocSc, MPH, LLB, PhD Candidate
MA, PhD
BEd, Dip PE, MPH

SENIOR RESEARCH OFFICER

Dr Karen McPhail-Bell
Ms Sharon Parker
Dr Heike Schütze

BBehSc Hons, PhD, AFHEA – resigned September 2016
BHSc (Nursing), MPH, RN
BSc (Biomedical), MPH, PhD – resigned June 2016



RESEARCH ASSOCIATE/RESEARCH OFFICER/PROJECT OFFICER

Ms Cheryl (Jane) Anderson	Heath Worker certificate
Ms Heather Attenbrow	BMediaComm
Ms Marreta Coleman	MPsych
Dr Ros Eames-Brown	B.ED (Nursing) PhD
Ms Emma Elcombe	Cert IV Bus, BAppSc (Equine Studies), MSc (Brain and Mind Sciences)
Mr Iqbal Hasan	MBBS, MTH
Mr Oshana Hermiz	MB, ChB, DS
Mrs Katie Hirono	BA, MPH
Ms Karla Jaques	BPH
Ms Kate Jones	BAS
Dr Tejas Kanhere	BEng (Hons), MBBS
Dr Catherine Kaplun	BEd (ECE) (Hons), PhD
Ms Rachael Kearns	B Nursing, PG Dip Int Health, MPH, RN
Ms Rabia Khan	BSc, MPH
Dr Melanie Moylan	BSc (Hons) PhD
Ms Annette Riley	BSW (Hons), MSW.
Ms Sheryl Scharkie	RN
Dr Nila Sharma	BAGAnSc, MA (Gender & Development), PhD
Ms Joan Silk	BA (Hons) Dip Ed*
Ms Hyun Song	BASc, MSc, PhD Candidate
Ms Alana Crimeen	BPhy, MPH
Ms Louise Thomas	BSc/BA
Ms Heidi Welberry	BSc (Hons), MBiostat
Ms Natasha West	Certificate IV Aboriginal and Torres Strait Primary Health
Ms Siggie Zapart	BPsych (Hons), PhD Candidate*

(*employed by Sydney South West Local Health District)

FINANCE MANAGER

Ms Sarah Ford	BBus
----------------------	------

ADMINISTRATIVE OFFICER

Ms Chih-Ching (Sunny) Chang	BA, Grad Dip (Interpreting & Translation), MCom
Ms Nouhad (Nina) El Haddad	BSc, MNutDiet, PhD Candidate
Ms Janelle Farmer	BInSt
Ms Mary Knopp	Dip Bus Admin*
Ms Fakhra Maan	BEng Lit/BJourn, MEng Lit, MCom (Organisation and Management)
Ms Charmaine Rodricks*	
Ms Susan Schiotz	BA, CertIV Project Management

(*employed by Sydney South West Local Health District)



AFFILIATED STAFF

(employed by the School of Public Health and Community Medicine)

PROFESSOR

Professor Siaw-Teng Liaw
Professor Nicholas Zwar

MBBS, Dip Obstetrics, PhD, FRACGP, FACMI, FACHI
 MBBS, MPH, PhD, FRACGP (to University of Wollongong in October 2016)

SENIOR LECTURER

Dr Joel Rhee

BSc (Med), MBBS (Hons), GCULT, PhD, FRACGP – (to Notre Dame University in October 2016)

STAFF SPECIALIST & SENIOR LECTURER

Dr Andrew Knight
Dr Michael Tam

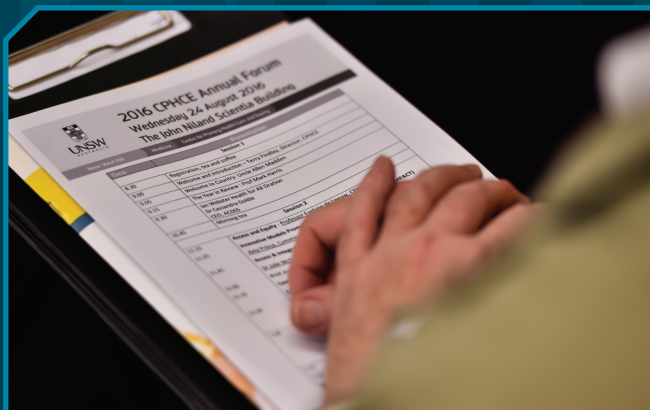
MBBS, MMedSci (ClinEpid), FRACGP, FAICD
 BSc(Med), MBBS, MMH(GP), FRACGP

CONJOINT STAFF

Mr Ben Cave
Dr Elizabeth Denney Wilson
Dr Sarah Dennis
Dr Rebekah Grace
Dr Patrick Harris
Dr Rachael Laws
Professor Jean-Frederic Levesque
Jude Page
Dr Joel Jin-Oh Rhee
Dr Heike Schutze
Dr Timothy Shortus
Ms Sarah Simpson
Dr Salim Vohra

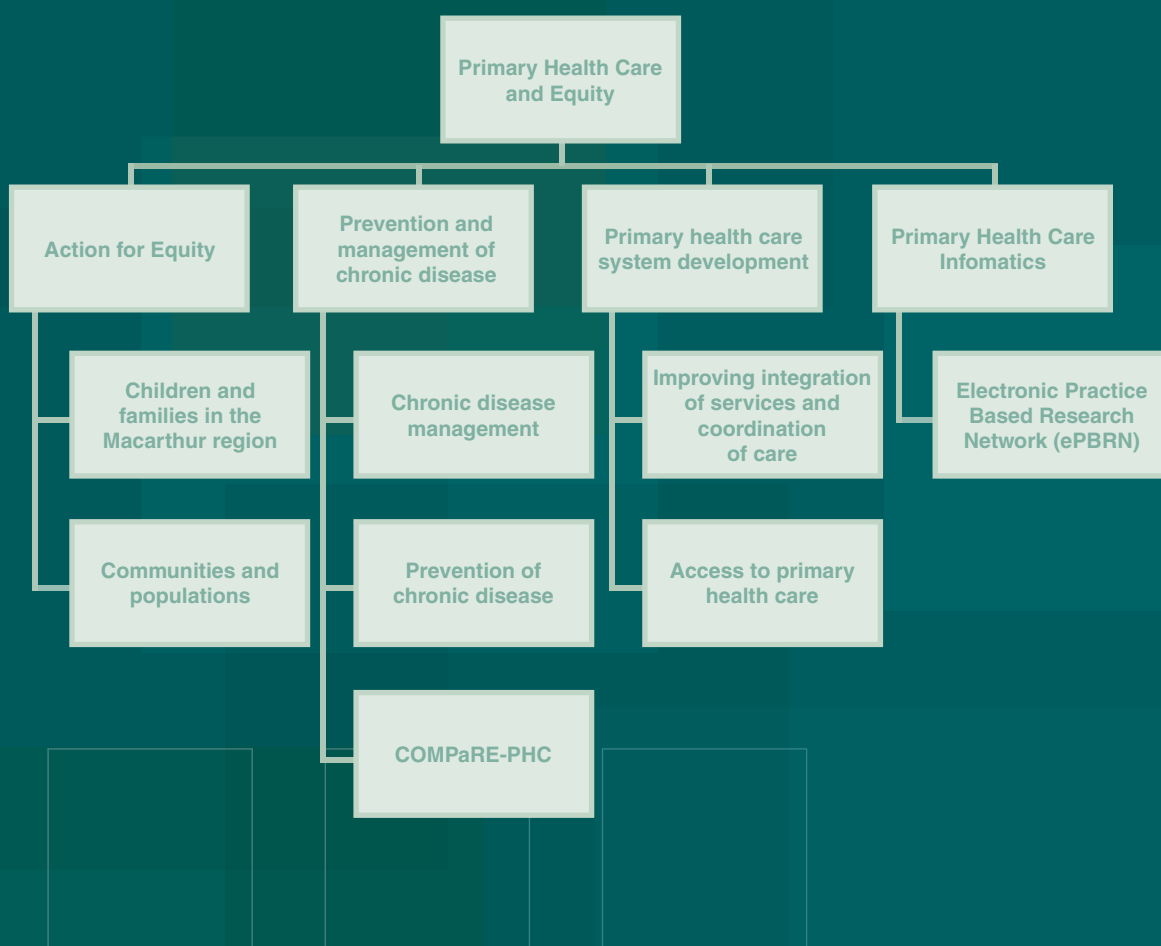
Associates, Leeds, England
 University of Technology Sydney (to University of Sydney in May 2017)
 University of Sydney
 Macquarie University
 Sydney University
 Deakin University
 Bureau of Health Information NSW
 Sydney Local Health District - BSc. Grad Dip Psych. MPH
 Notre Dame University
 University of Wollongong
 General Practitioner
 EquiAct
 Centre for Health Impact Assessment Institute of Occupational Medicine, London
 General Practitioner
 Notre Dame University

Dr Qing Wan
Ms Anna Williams



RESEARCH

The Centre has four research streams, with a number of sub-programs.



Research projects active in 2016 are listed below by stream. The chief investigator is named first (in bold) followed by the project coordinator (underlined). Other members of the research team are listed in alphabetical order, and affiliations are provided for those who are not part of CPHCE. The source of funding is given in brackets. For further details of projects, please see our web site (www.cphce.unsw.edu.au)

PREVENTION AND MANAGEMENT OF CHRONIC DISEASE

Our research on the prevention and management of long term conditions in primary health care addresses the major challenge of chronic disease which confronts health systems world-wide. We are particularly concerned with addressing the needs of vulnerable and disadvantaged groups who are less able to prevent or self-manage their health. A major focus has been on tailoring our interventions to patients' culture and health literacy and developing health literacy in disadvantaged groups. Our interventions include innovations in the roles of health care providers within the primary care team, use of information systems and technology, and better coordination within primary care and between it and hospital or specialist services in the patient- centred health neighbourhood.

CHRONIC DISEASE MANAGEMENT

This program focuses on improving the quality of care and outcomes for a range of chronic diseases in PHC including diabetes, chronic respiratory and cardiovascular disease, cancer and patients with multiple conditions including the combination of physical and mental illness. The theoretical basis of this work includes the expanded chronic illness model which identifies the support systems and organization required for optimal patient centered chronic disease management including new roles for primary care providers especially practice nurses, support for patient self-management, decision support and information systems.

PROJECTS

Attitudes to cancer follow up care in general practice: Translational Cancer Research Network (TCRN)

Research Team: **Mark Harris**, Heike Schütze, Lena Caruso (Translational Cancer Research Network), Melvin Chin , Robyn Ward (Prince of Wales Hospital), David Weller (Edinburgh University)

Shared e-care plans for long term management of patients with cancer. Translational Cancer Research Network (TCRN)

Research Team: **Mark Harris**, Melvin Chin and Kate Webber (Prince of Wales Hospital), Jane Taggart, Alex Dolezal (CESPHN), Andrew Knight (SWS LHD) John Lewis.

Culturally appropriate diabetes care in mainstream general practice for urban Aboriginal & Torres Strait Islander people

Research Team: **Siaw-Teng Liaw**, John Furler (Department of GP, University of Melbourne), Margaret Kelaher (Onemda VicHealth Koori Health Unit, University of Melbourne), Phyllis Lau (Department of GP, University of Melbourne), Priscilla Margaret Pyett (Monash University), Kevin Rowley (Onemda VicHealth Koori Health Unit, University of Melbourne)

PELICAN: A cluster randomised trial of early intervention for Chronic Obstructive Pulmonary Disease by practice nurse - GP teams

Research Team: **Nicholas Zwar**, Alan Crockett (University of Adelaide), Sarah Dennis, Iqbal Hasan, Oshana Hermiz, Sandy Middleton (Australian Catholic University), Helen Reddel (Woolcock Institute, University of Sydney), Onno van Schayck (Maastricht University), Sanjyot Vagholkar

Integrating chronic illness self-management plans with primary care management: a clarification model of patient-provider care congruence.

PhD Student: **Anna Williams**; Supervisors: Patricia Bazeley and Mark Harris

Review of interventions for integrated care in primary health care. Systematic review, audit and survey of interventions in NSW local health districts.

Research Team: **Mark Harris**, Sharon Parker, Louise Thomas, Terry Finlay, Rachel Kearns, Gawaine Powell Davies, Julie McDonald.

IMPACT study (See PHC and Integration stream). South West Sydney Learning Innovation Partnership Trial. Access to self management support for patients with type 2 Diabetes.

Research Team: **Oshana Hermiz** and **Catherine Spooner** (CPHCE), Amy Prince and Marija Moretti (SWSPHN), Dianna Milosovic (SWSLHD).

PREVENTION OF CHRONIC DISEASE

Our research in prevention has focused on the behavioural risk factors (smoking, nutrition, alcohol, physical activity) and the physiological risk which predisposes to chronic disease (obesity, hypertension, dyslipidaemia, pre-diabetes, and overall cardiovascular risk). We have developed and evaluated interventions based on the 5As framework (Assess, Advise, Agree, Assist, Arrange) in children and adults. A particular focus is on the management of overweight and obesity and preventive care for disadvantaged groups with low health literacy. The research has included mixed method feasibility studies, quasi experimental and cluster randomized trials in primary health care. The interventions have included interactive training of health professionals in assessment of risk and motivational interviewing, enhancing the role of practice nurses, supporting referral and uptake of individual and group diet and physical activity education programs, and long term follow up and support. Increasingly it has involved the use of telephone, web based and m-health interventions in addition to the role of primary health care providers. This research continues to be translated into health policy and has been translated into guidelines and resources for preventive primary health care.

PROJECTS

Implementing guidelines to routinely prevent chronic disease in general practice (PEP)

Research Team: **Mark Harris**, Sharon Parker, Raghib Ahmad, Chris del Mar (Bond University), John Litt (Flinders University), Jane Lloyd, Danielle Mazza (Monash University), Gawaine Powell Davies, Grant Russell (Monash University), Richard Taylor (SPHCM, UNSW), Mieke van Driel (University of Queensland), Nicholas Zwar

Consumer Navigation of Electronic Cardiovascular Tools - The CONNECT study.

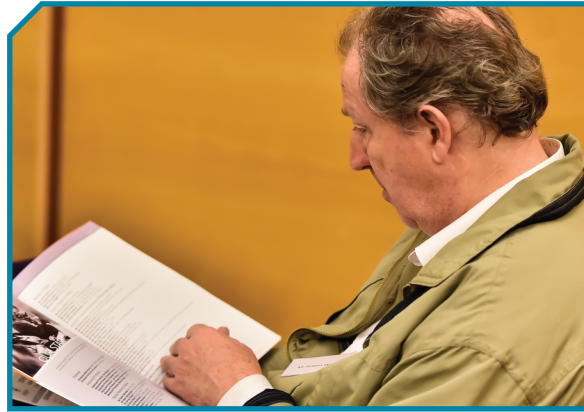
Research Team: **David Peiris**, Tim Usherwood, Mark Harris, Sharon Parker

Electronic Activity Monitoring Systems (EAMS) as a primary healthcare intervention for promoting physical activity in obese patients

Research Team: **Tejas Kahhere**, Mark Harris

HeLP-GP Preventing chronic disease in patients with low health literacy using e-health in general practice (commenced in 2017).

Research Team: **Mark Harris**, Sharon Parker, Louise Parker, Teng Liaw, Upali Jayasinghe, Nick Zwar (UNSW), Nigel Stocks & Manny Noakes (Adelaide University), Don Nutbeam (University of Sydney), Elizabeth Denney Wilson (UTS), Annie Lau (Macquarie University).



COMPaRE - PHC

PROJECTS

Centre for Obesity Management and Prevention Research Excellence in Primary Health Care (COMPaRE- PHC) (APHCRI)

Research Team: **Mark Harris**, Catherine Spooner, Deborah Askew (Queensland Health- Inala Indigenous Health Service), Adrian Bauman (University of Sydney), Kylie Ball (Deakin University), Iain Broom (Robert Gordon University), Karen Campbell (Deakin University), Ian Caterson (University of Sydney), David Crawford (Deakin University), Elizabeth Denney-Wilson (University of Technology Sydney), Noel Hayman (Queensland Health - Inala Indigenous Health Service), Upali Jayasinghe, Jonathon Karnon (University of Adelaide), Rachel Laws (Deakin University), Siaw-Teng Liaw, John Lynch (University of Adelaide), Gawaine Powell Davies, Deborah Schofield (University of Sydney), Nigel Stocks (University of Adelaide), Julie Will (Centres for Disease Control and Prevention)

A number of projects are being undertaken in the Centre as part of COMPaRE-PHC including:

1. Better Management of Weight in General Practice (BMWGP)

Research Team: **Mark Harris**, Nighat Faruqi, Elizabeth Denney-Wilson (UTS), Nouhad El-Haddad, Oshana Hermiz, Rachel Laws (Deakin University), Siaw Teng Liaw, Jane Lloyd, Catherine Spooner, Nigel Stocks (University of Adelaide)

2. Health economic analysis of a model for implementation of guidelines

Research Team: **Mark Harris**, Jodi Gray (University of Adelaide), Jonathon Karnon (University of Adelaide), Sharon Parker, Catherine Spooner, Nigel Stocks (University of Adelaide)

3. Health literacy interventions for weight management in indigenous health

Research Team: **Mark Harris**, Catherine Spooner, Deborah Askew (Inala Indigenous Health Service), Sarah Dennis (University of Sydney), Nighat Faruqi, Chandni Joshi, Jane Lloyd, Nigel Stocks (University of Adelaide), Jane Taggart

4. Referral of obese patients in primary care

Research Team: **Mark Harris**, Ian Caterson (University of Sydney), Elizabeth Denney-Wilson (UTS), Jonathon Karnon (University of Adelaide), Kyoung Kon Kom (Gachon University of Medicine and Science), Rachel Laws (Deakin University), Siaw-Teng Liaw, Megan Passey (University of Sydney), Catherine Spooner, Lin-Lee Yeong

5. Assessment and management of weight in young children

Research Team: **Elizabeth Denney Wilson**, Mark Harris, Catherine Spooner



PRIMARY HEALTH CARE SYSTEM DEVELOPMENT

The focus on integrated care intensified in 2016 at local, state and national levels. Our research in this area has been informed by projects with the NSW Ministry of Health, NSW Health Pillars, several Local Health Districts, and Primary Health Networks. During the year we worked through our research hubs to support a range of integration activities, and we hosted a Forum about Health Care Neighbourhoods in partnership with the Agency for Clinical Innovation.

PROJECTS

National Evaluation of PHNs (Commonwealth Department of Health)

Research team: **Karen Gardner**, Elizabeth Harris Mark Harris, Riki Lane (Monash University, Siaw-Teng Liaw. Julie McDonald, Grant Russell (Monash University), Nick Zwar, EY and EY Sweeney

Evaluation of Integrated Care Strategy (Translational Research Grant)

Research team: **Julie McDonald**, Karen Gardner

S & SESLHD, CESPEN: Assessing the feasibility of an aged care cohort study

Research team: **Elizabeth Harris**, Elizabeth Comino, Julie McDonald

A tool to support LHDs in their decision about community based health services

Research team: **Gawaine Powell Davies**, Julie McDonald, Karen Gardner, Powell Davies T

The OPTIMISE project: Collaborative improvement of primary health care delivery to the Australian refugee community

Research team: **Mark Harris**, (PI), Mitchell Smith (NSW RHS), Keith McDonald (SWSPHN), Lisa Atkins (NSW RHS), Marija Moretti (SWSPHN), Tadgh McMahon (SSI), Amitabh Rajouria (SSI), Winston Lo, Hyun Song

Transitions of care for asylum seekers

Research team: **Damian Gill** (ILP), Mark Harris, Karen McPhaill-Bell, Elizabeth Harris

Use of patient activation measure as a QI tool to support more patient centred care

Research team: **Julie McDonald**, Sharon Parker, Karen Gardner, Racheal Kearns, Hyun Song

Healthy Ageing Cohort Study - 18 month extension

Research team: **Elizabeth Harris**, Elizabeth Comino, Julie McDonald

Assessing the Feasibility of an Aged Care Cohort Study (SLHD and SESLHD)

Research team: **Elizabeth Comino**, Elizabeth Harris, Mark Harris, Md. Fakhru Islam, Julie McDonald



RESEARCH

Hospital in the Home Equity Lens (SLHD)

Research Team: **Elizabeth Harris**, Elizabeth Comino, Jude Page

Innovative Models Promoting Access and Coverage Team (IMPACT) Centre for Research Excellence (APHCRI, CIHR)

Research team: **Mark Harris**, Teng Liaw, Jean Frederic Levesque, Gawaine Powell Davies, Julie McDonald, Sharon Parker, Louise Thomas and Hyun Song

Investigating Best Practice Primary Care for Older Australians with Diabetes Using Record Linkage: a Pilot Study (NHMRC)

Research Team: **Elizabeth Comino**, Jeff Flack (SWSLHD), Marion Haas (UTS), Mark Harris, Bin Jalaludin (SWSLHD), Louisa Jorm (UWS), Gawaine Powell Davies, Kris Rogers (SAX Institute)

Universal Health Home Visiting Project (SLHD and SESLHD)

Research Team: **Elizabeth Harris**, Tish Bruce (SESLHD, Miranda Shaw (SWSLHD)

Examining outcomes in chronic Disease in the 45 and Up Study (EXTEND45)

Research team: **Elizabeth Comino**, Meg Jardine (George Institute and SLHD), Celine Foote (George Institute and SLHD), Bette Liu (SPHCM), Carol Pollock (Kolling Institute), Martin Gallagher (George Institute and SLHD)



ACTION FOR EQUITY

This research stream recognises that health, development and wellbeing are the product of complex interacting factors at the individual, family, community and environmental levels. We conduct research at different levels, with interventions and innovations that are embedded within systems and built on a relationship between local research institutions and the professional and broader community. Through this approach we undertake practice and policy relevant research that provides high quality research reports and peer-reviewed publications, and direct support for practice and service development and capacity building.

CHILDREN AND FAMILIES IN THE MACARTHUR REGION

This program focussed on understanding the needs of vulnerable families (including families at risk of poorer child health and development outcomes, families living in lower socioeconomic communities and Aboriginal families) and developing and trialling interventions to improve child and young people's health, development and educational outcomes, including individual, family and service system interventions. This research program is grounded in the evidence about the importance of the early years, and targets families with children from antenatal (pregnancy) to the second decade of life. Key research in this program comprised the Gudaga Research Program, a suite of studies that includes the NHMRC funded Gudaga cohort study of Aboriginal children's health and development in urban settings, and the ARC funded Gudaga Goes to School study of children's experience of transitional and early years of schooling.

The projects are currently in final analysis and reporting phases and producing several publications. Together, they provide strong foundational evidence going forward to extend our research to the Aboriginal and Torres Strait Islander Health Research Program which will focus on critical issues emanating from the research to Close the Gap, such as women's whole-of-life health, sexual health, domestic violence, AOD and chronic disease impacts. The majority of the researchers have moved on, and CHETRE said final farewells to Projects Coordinator, Holly Mack, and Project Officer, Jane Anderson. In coming weeks, we will welcome our new research team as we take our exciting steps forward.

PROJECTS

Can Get Health in Canterbury (Sydney LHD, Inner Western Sydney ML)

Research Team: **Elizabeth** Harris, Penny Findlay, Karen McPhail-Bell

The Gudaga Study: Describing the health, development, early education, family environment and service context of Aboriginal children aged five to nine years in an urban location (Gudaga III) (NHMRC, SWSLHD)

Research team: **Elizabeth Comino**, Holly Mack, Jennifer Knight, Cheryl Jane Anderson, Rebekah Grace, Lisa Jackson, Pulver (Muru Marri Indigenous Health Unit, UNSW), Bin Jalaludin (SWSLHD), Catherine Kaplun, Lynn Kemp, Kelvin Kong, Fakhra Maan, Jenny McDonald (SWSLHD), Cathy McMahon (Macquarie University), Sheryl Scharkie, Natasha West, Kate Short

Gudaga Research Program Dissemination Project (SWSLHD, Tharawal Aboriginal Corporation (TAC))



Research team: **Nick Rosser**, Elizabeth Comino, Darryl Wright (TAC), Holly Mack, Cathy Kaplun, Lynn Kemp, Jennifer Knight,

An ecological study of school transition and the early years of school for Aboriginal children in an urban location (ARC)

Research Team: **Lynn Kemp**, Rebekah Grace, Cheryl Jane Anderson, Elizabeth Comino, Sue Dockett (Charles Sturt University), Melissa Haswell-Elkins (Muru Marri Indigenous Health Unit, UNSW), Lisa Jackson Pulver (Muru Marri Indigenous Health Unit, UNSW), Cathy Kaplun, Jenny Knight, Fakhra Mann, Bob Perry (Charles Sturt University), Sheryl Scharkie, Natasha West

Evaluation of the Healthy Learner Project in a disadvantaged high school (Mounties)

Research team: **Siaw-Teng Liaw**, Sarah Dennis, Edward Noon (Ashcroft High School Sustained nurse home visiting: who benefits, why and how? (PhD study)

PhD candidate: **Siggi Zapart**; PhD candidate: Lynn Kemp, Jenny Knight

COMMUNITIES AND POPULATIONS

This program focuses on the health and wellbeing of whole communities and populations. This research program is grounded in the evidence about the positive and negative impacts of the social determinants of health and their distribution within our society: these inequities in health, avoidable health inequalities, arise because of the circumstances in which people grow, live, work, and age, and the systems put in place to deal with illness. The conditions in which people live and die are, in turn, shaped by political, social, and economic forces. Research in this program is conducted with communities, populations and organisations, and addresses partnership, planning and policy parameters.

In 2016 we continued to undertake research, training and capacity building in complex community intervention and to engage with local intersectoral partners including local government, NSW Land and Housing Corporation, Housing NSW, Department of Family and Community Services and SWSLHD. Community STaR, our flagship training and research centre funded by Liverpool City Council, undertook a series of community activities to explore social cohesion. We continue to undertake supervision and mentoring of undergraduate and postgraduate research and practice students in the areas of health promotion, medicine and social work.

Our Decision Support Tools and Approaches program continues to support the undertaking of HIA locally, nationally, and internationally, including work in Bhutan and Korea. In 2016 we partnered with SWSLHD and Western Sydney Community Forum to conduct an HIA on the proposed Western Sydney Airport Community Engagement Process, which helped inform debate on this controversial topic. Recommendations from our Health into Planning project are being integrated into Wollondilly Shire Council Community Strategic Plan including the development of a health and wellbeing vision statement, a health assessment policy which supports the implementation of a health and wellbeing vision. Our Learning by Doing Courses in HIA and in Working with Locational Disadvantage helped build capacity within LHDs and the community sector. A CHETRE staff member (K. Hirono) was appointed president of SOPHIA (The Society of Practitioners of Health Impact Assessment).



PROJECTS

Development of an equity framework for Sydney Local Health District.

Research team: **Gawaine Powell Davies**, Elizabeth Harris, Jane Lloyd

Community 2168 research and training hub – Community STaR (SWSLHD)

Research Team: **Joan Silk**, Siggie Zapart, Ben Harris-Roxas

Health in Council Integrating Health Considerations into Council Planning Processes (SWSLHD)

Research team: **Fiona Haigh**, Maria Beer (SWSLHD), Katie Hirono, Karla Jaques, Alana Crimeen, Tina Britton (Wollondilly Shire Council), Carolyn Whitton (Wollondilly Shire Council)

Housing and Health Partnership (Population Health, South Western Sydney Local Health District, NSW Health; Greater Western Sydney Area, Department of Family and Community Services; Housing NSW Land and Housing Corporation, Department of Finance and Services; CHETRE)

Research team: **Fiona Haigh**, Evelyne de Leeuw, Ben Harris-Roxas, Anthony Hartley (NSW Department of Family and Community Services), Cathryn Noble (FACS), Robert Bosi (FACS), Deborah Follers (Land and Housing Corp), Julie Churchward (FACS), Michael Van Der Lay (Housing NSW), Stephen Conaty(SWSLHD), Cesar Calalang (SWSLHD), Elizabeth Millen (SWSLHD)

Learning by Doing Health impact Assessment Training (SWSLHD)

Research team: **Fiona Haigh**, Katie Hirono, Karla Jaques

Working in locationally disadvantaged communities: learning by doing program

Research Team: **Joan Silk**, Ben Harris-Roxas, Siggie Zapart

Health Impact Assessment of Western Sydney Airport Community Consultation

Research Team: **Katie Hirono**, Fiona Haigh, Karla Jaques, Ben Harris-Roxas, Evelyne de Leeuw, Stephanie Fletcher (SWSLHD), Cesar Calalang (SWSLHD), Elizabeth Millen (SWSLHD)

Learning by Doing Health Impact Assessment of Community Transport

Research Team: **Emily Mason** (SWSLHD), Barry Taylor (SWSLHD), Jane Stratton (Think and Do Tank), Tracey Willow (Western Sydney Community Forum), Katie Hirono, Fiona Haigh, Karla Jaques

Reducing the risk of potentially preventable hospitalisations: A literature review of effective interventions

Research team: **Fiona Haigh**, Karla Jaques, Siggie Zapart, Evelyne de Leeuw

Program logic for Locational Disadvantage

Research Team: **Siggie Zapart**, Joan Silk, Ben Harris-Roxas, Evelyne de Leeuw

Review of the SWSPHN After Hours Program and model development

Research team: **Ben Harris-Roxas**, Karla Jaques, Iqbal Hasan, Hairong Yu, Jane Taggart

Ways of Thinking Ways of Doing (WoTWoD) cultural respect in general practice

Research team: **Siaw-Teng Liaw**, Iqbal Hasan, Mark Harris, In collaboration with Gandangarra Local Aboriginal Land Council Local Aboriginal Organisations



PRIMARY HEALTH CARE INFORMATICS

RESEARCH

In 2016, the Primary Care Informatics research and development program has focused on data quality, integrated primary care, access and equity with a focus on vulnerable groups and chronic disease. This work is done in under the auspices of the South West Sydney Integrated Care Collaboration, a joint committee of the boards of the South West Sydney Local Health District and Primary Health Network. A pilot study was conducted as part of the development of the electronic practice based research network (ePBRN) in the Wollondilly district in South West Sydney.

There are currently 3 PhD students enrolled and working on: (1) machine learning supported predictive modelling, (2) health information systems to support evidence based care of survivors of colorectal cancer, and (3) well baby care. Fatema Khatun graduated PhD in 2016 with her thesis titled "Community readiness for mHealth services in rural Bangladesh".

We are engaged with Professor Louisa Jorm from the UNSW Centre for Big Data Research in Health through the UNSW Medicine E-Research Institutional Cloud Architecture project, with funding from the MREII program (2016) to work on secure access to data.

We are working with Professor Branko Celler from Biomedical Engineering on "Predictive analytics from at home telemonitoring of vital signs" with funding through ARC-Linkages (UNSW #RG152818 from 2016-18). This uses big data collected through the CSIRO-implemented home telemonitoring project in the 3 eastern seaboard states, ACT and Tasmania.

The project "HIV treatment as prevention: A longitudinal assessment of population effectiveness" with Rebecca Guy from the Kirby Institute for infection and immunity in society continued in 2016 (NHMRC#1082336 2015-17).

Professor Liaw continues to be a Chief Investigator in the NHMRC Centre for Research Excellence in eHealth (ehealth.edu.au) which is now based in Macquarie University. He is also part of the renewal bid in 2017.

We continue to work with our overseas collaborators, including:

- Professor Simon de Lusignan (University of Surrey)
- Professor Michael Kahn (University of Colorado)
- Professor Craig Kuziemsky (University of Ottawa)

ELECTRONIC PRACTICE BASED RESEARCH NETWORK (EPBRN)

The 2016 ePBRN Research team includes: Siaw-Teng Liaw (Director); Jane Taggart, Mark Harris and Hairong Yu (CPHCE); Michael Tam and Andrew Knight (GP Unit); Geoff Delaney (SWSLHD Cancer Services), Bin Jalaludin (SWSLHD Population Health); and Blanca Gallego Luxan (Macquarie University).

The ePBRN continues to work with clinical research groups to explore the fitness of ePBRN data for disease specific health services research and generate clinical research questions for further study. To date, these exploratory studies include Obstructive Sleep Apnoea, palliative care and diabetes.

The ethical, legal and social issues in this domain are being addressed to support the development of a comprehensive program to inform and assist the researcher, teacher, manager and clinician to effectively and efficiently address the issues associated with collecting and managing routinely collected HIS data to ensure fitness for the effective and efficient coordination of large multicentre research, teaching, clinical care and quality improvement programs and networks.

The enhancement of the ePBRN continues. Plans are underway to formalise the ePBRN data model to harmonise with the Observational Medical Outcomes Partnership Common Data Model to enable data interoperability and aggregation. The same techniques and tools will also be used for data aggregation in the local ePBRNs.

UNSW WHO Collaborating Centre for eHealth (AUS-92 WHOCC eHealth)

The Aus-92 WHOCC eHealth, which was established in UNSW Sydney for the period 2013-17, with the following workplan:

1. Evidence-based evaluation and assessment of eHealth; and
2. Scoping and appraising mHealth solutions.

Professor Liaw took on the role of the Director of Aus-92 WHOCC eHealth in 2016. The program will continue with the enhancement and extension of the current evaluation framework, research into eHealth and mHealth with a focus on the Internet of Things, capacity building of member countries in the Asia Pacific with the Asia electronic Health Information Network (AeHIN), and citizen and community engagement to facilitate and sustain the diffusion of digital tools.

PROJECTS

1. Predictive analytics from at home telemonitoring of vital signs (Funding \$300K 2016-18: ARC-Linkages #LP160101202, UNSW #RG152818)
2. UNSW Medicine e-research institutional cloud architecture (erica). (Funding 2016-17: UNSW #RG152893)
3. An assessment of community readiness for mHealth in rural Bangladesh (AusAid, PhD study) PhD Student: Fatema Khatun; Supervisors: Siaw-Teng Liaw, Anita Heywood (SPHCM, UNSW), Pradeep Ray (APuHC)
4. Healthy me to optimise the management of asthma (CRE in eHealth) (NHMRC) Research team: Annie Lau (CHI), Amael Arguel (CHI), Sarah Dennis, Siaw-Teng Liaw

RESEARCH AND DEVELOPMENT HUBS

RESEARCH

The research, evaluation and development centres located in three metropolitan Health Districts are now a central part of CPHCE's strategy. They play a central part in;

- Research translation
- Evaluation and strategy development
- Education and capacity building in health services
- Co-design and implementation of research projects
- Service redesign and quality improvement
- Equity focused Health Impact Assessment

Each centre is supported by both the University and the Local Health District with a formal agreement, an advisory committee and joint funding. In 2016 we began discussing with our LHD partners the future of these Centres over the next five years including succession planning for senior research staff roles.

An increasing role of these Centres is the support of partnerships across the primary health care sector, particularly between LHDs and Primary Health Networks.

SEaRCH

The South Eastern Sydney Research Collaboration Hub (SEaRCH) was established as a partnership with South Eastern Sydney Local Health District (SESLHD) in 2014, building upon previous collaborations. The founding Director was Dr Julie McDonald, and during 2016 the hub continued to strengthen links with primary health care services and research.

SEaRCH is part of the organisational structure of the SESLHD and is unit within the Primary, Integrated and Community Health Directorate. SEaRCH's mission is to work with SESLHD to:

- undertake, promote and support research and evaluation that strengthens primary health care and equity
- support the implementation and use of research evidence in practice
- contribute to the development of primary health care.

SEaRCH's major areas of focus in 2016 were:

- developing an evaluation framework for the SESLHD Integrated Care Strategy
- SESLHD clinical settings
- establishing a longitudinal cohort of older people living in the eastern and central Sydney region, in partnership with SLHD and CESPAN
- undertaking a consultative review across the Primary, Integrated and Community Health Directorate to profile and appraise research and evaluation capacity
- undertaking primary research on the use of water pipe tobacco amongst Arabic-speaking communities, in partnership with the SESLHD Multicultural Health Service
- contributing to a research project characterising health care integration in Australia, undertaken by a visiting scholar from the USA (Lisa Angus)
- commencing a study on use of oral health administrative data sets to examine patterns of service use



CHETRE

The Centre for Health Equity, Research and Evaluation (CHETRE) is based in South West Sydney. It is part of UNSW's CPHCE, the Division of Population Health in the Local Health District, a member of the Ingham Institute of Applied Medical Research, and – where Indigenous research is concerned – accountable to AHMRC the Tharawal Aboriginal Corporation. CHETRE has operated since 1998. In 2015 a new Director was appointed, Professor Evelyne de Leeuw. Evelyne brings substantial expertise in health promotion and healthy urbanism to the centre, complementing CHETRE's existing research on locational disadvantage and health impact assessment.

CHETRE has two program areas:

Aboriginal and Torres Strait Islander Health Research, which includes the renowned Gudaga cohort study and related research.

Communities and Populations, which includes an emphasis on decision support tools and approaches and a core commitment to working with locational disadvantaged communities.

CHETRE's partnership with South Western Sydney Local Health District (SWSLHD) is a strong one and operates at multiple levels of both organisations.

CHETRE'S achievements include:

- receiving funding from the CAGES Foundation to support the Aboriginal and Torres Strait Islander Health research program, including the appointment of its new lead, Suzanne Ingram
- Gudaga research program to inform better health delivery for Aboriginal and Torres Strait Islander women, children and families
- completed two Learning by Doing (LbD) capacity building programs for the two communities and populations priority areas (1. working in locationally disadvantaged areas and 2. health impact assessment)
- twinned funding from Tharawal Aboriginal Medical Service and SWSLHD for the dissemination of findings from the Gudaga study to inform services and planning
- a health impact assessment of the planned Western Sydney airport community engagement
- conducting a literature review to develop a healthy airports settings-based approach contributing to the planning of a SWSLHD Population Health Western Sydney Airport Forum
- research on integrating health considerations in local government planning in Wollondilly Shire Council
- assistance in the development of program logic and an evaluation framework for the Wollondilly Health Alliance's 'Healthy Towns' programme
- conducting a survey of residents in the Liverpool CBD area on health behaviours and risk factors in conjunction with Liverpool City Council
- supporting an evaluation of the Liverpool Hospital Entrance Redevelopment
- carrying out literature reviews of place based interventions and interventions to address preventable hospitalizations



RESEARCH

- supporting the update including revised objectives for the Health and Housing partnership MOU (CHETRE, SWSLHD, Housing NSW, LAHC)
- investigating analysis of clusters of Ambulatory Care Sensitive Conditions in conjunction with Population Health, Community Health, South Western Sydney PHN and academic partners from WSU and Curtin University
- continuing the activities of Community STaR, the Service for Training and Research that CHETRE operates in Miller. This included a Community STaR community forum on climate change was recently held in Miller, and included Prof Lesley Hughes, a former member of the Intergovernmental Panel on Climate Change
- contributing to SWSLHD's responses on a range of land use planning and local government proposals contributing to teaching in the School of Public Health and Community Medicine. This has included two graduate students have assisted CHETRE in background studies
- have also hosted the sabbatical of Dr Anna Stevenson from New Zealand, Manager of the Canterbury Health in All Policies program. This is testimony to the global reputation of the Centre
- provided expert support internationally to WHO South East Asian Regional Office expert group on suitable HIA tools and development of guidance for low resource settings (Bhutan), Expert panel member of the Health Impact Project evaluation the impact of HIAs on determinants of health equity in the US

HEALTH EQUITY RESEARCH AND DEVELOPMENT UNIT (HERDU)

Health Equity Research and Development Unit (HERDU) is a unit of Population Health in Sydney Local Health District and has operated since 2014. HERDU aims to work with SLHD staff and with communities to improve the health of groups of people who do not have opportunities to receive the health care and resources they need to be as healthy as others in the population.

Together with Central and Eastern Sydney Primary Health Network (CESPHN) and SLHD, HERDU has worked with immigrant communities through the Can Get Health in Canterbury project to improve access to a comprehensive range of health services, and address underlying determinants of health. This year with support from South West Sydney LHD we have trained 4 BCEs who have run a number of Healthy Women's Programs in the Bangladeshi community, launched a DVD on domestic violence in the Bangladeshi community and worked with Burmeses' Rohingya Communities Association to develop a 4 day child first aid project attended by 30 Rohingya mothers. HERDU, through the Can Get Health in Canterbury project, has been actively engaged in the Kids don't Fly campaign – with particular focus on the Bangladeshi community – taking every opportunity to inform community members about ways to prevent their children from falling from windows or balconies, and working with local real estate agents and rental property managers, and with Bangladeshi newspapers.

With SLHD support, HERDU is establishing a Bilingual Community Education (BCE) Program across Sydney Local Health District, South Eastern Sydney Local Health District (SESLHD) and CESPHN. The BCE Program will provide community based education programs with Arabic, Mandarin, Vietnamese, Bengali and Nepali BCEs on specific health issues such as diabetes, women's health and nutrition to meet the needs of culturally and linguistically diverse communities.

HERDU has promoted models of care and policy development to prevent or reduce inequities including early childhood sustained nurse home visiting and integrated care between primary and secondary health services. We are working closely with the City of Sydney to conduct a health impact assessment on the Green Square development. The assessment focuses on the likely impact of the development on child development, transport, community infrastructure and affordable housing.

Another of HERDU's aims is to conduct high quality research to describe health inequities and evaluate, translate evidence into practice, and monitor the impact of interventions, policies and programs on health equity. In 2016 projects that supported us meeting that aim include:

- Undertaking a review of the literature for Working Together: intersectoral action for health for the purpose of strengthening and sustaining existing partnerships and of enhancing the likelihood of success of new partnerships to implement strategies for the achievement of the goals of the cross agency Central and Eastern Sydney Child Health and Wellbeing Plan
- Supporting the conduct of baseline research for a review of the Universal Health Home Visit Program with SLHD, SESLHD and Sydney Children's Hospital
- Together with CESP HN and SESLHD, supporting the analysis of integrated care for an older persons' cohort as a subgroup of the 45 and Up Study cohort in NSW
- Together with CESP HN, conducting research to understand why a high proportion of migrant parents with young children are attending ED 'After Hours' rather than seeking care from a primary health care provider
- Together with CPHCE, developing research to evaluate an initiative to develop the organisational health literacy of hospitals and community services and new models for increasing equitable access to health services

A further aim of HERDU is to develop leadership, skills and capacities to address health equity through training of SLHD staff, partner organisations and communities. HERDU has:

- Provided free access for SLHD staff to relevant MPH Summer School programs at UNSW;
- Supervised research students and trainees in the NSW Aboriginal Population Health training initiative;
- Run a Learning by Doing Program to improve equity in delivery of chronic disease programs in SLH





RESEARCHER PROFILE

RESEARCH

Dr Karolina Kryszynska

I started my work as a Research Fellow at the Centre for Primary Health Care and Equity (CPHCE) in late 2016. I am coordinating the research side of a randomised controlled trial (RCT) looking at the facilitated Advance Care Planning (ACP) intervention for patients with an advanced illness. ACP is a process of reflection, discussion and communication that enables a person to plan for their future medical treatment and other care, for a time when they are not competent to make, or communicate, decisions for themselves. The facilitated ACP intervention involves discussions with patients, their families, carers and clinical staff, communications with specialists, GPs, and other health providers involved in patient care. It also provides patients and their carers with assistance in completing the ACP documentation and its dissemination. It is an exciting project involving collaborations with nurses, specialists, allied care staff, and GPs across six clinical sites in two Local Health Districts in Sydney. It provides me with an opportunity to learn about the value of ACP for patients, their families and carers, and challenges encountered by clinical staff in implementing this important process.

I am a psychologist with research background in mental health, especially suicide prevention and bereavement, and dementia. My work at the CPHCE allows me to apply knowledge and experience gathered in my previous work in a new field. Before starting my work at the CPHCE I was involved in a scoping project for a national dementia registry in Australia, led by Professor Henry Brodaty at the UNSW Dementia Collaborative Research Centre. Immersion in the field of dementia research, diagnosis, management and treatment, as well as the challenges faced by carers of people with dementia, gave me background knowledge which I use in my work on ACP. Also, the issues of quality of life, coping with loss and bereavement, and the need for support, which have been major themes in my suicide research, apply to my current work at the CPHCE.

I completed my PhD in psychology at the Adam Mickiewicz University in Poznan, Poland in 2001. Over the last 15 years I worked as a researcher, a lecturer, and a psychologist in a variety of settings. Among other, for three years I worked as a psychologist at a national helpline in Belgium (Tele-Onthaal). I offered training, supervision and every-day support to volunteers providing 24/7 phone and online help to people in crisis. This job gave me many personal and professional insights into the importance of intrapersonal interaction and human contact. It taught me steadfast respect for the skills and passion which volunteers can bring. In early 2016 I decided to pursue my life-long dream to become a Gestalt psychotherapist and I enrolled in two-year training at the Relational Institute Australia. The clinical work seems to complement well my research endeavours.

Over the years, I have published many papers in peer-reviewed journals, book chapters and I have presented at conferences in Australia and internationally. I have co-edited two books on suicide prevention in children and adolescents, and on suicide bereavement and support. I am extremely fortunate to have met supportive and generous mentors, who helped me to practice my research skills and offered encouragement. It has been an amazing professional journey, which has led me to the CPHCE and my work on the ACP RCT. I am looking forward to seeing the research outcomes of the project, and how they are translated into better care and support for patients with advanced illnesses, their families and carers.



FELLOWSHIP, SCHOLARSHIPS AND AWARDS

In 2016, 1 staff member had a research fellowship and 3 staff had PhD scholarships. The Centre also awarded top up scholarships to those on PhD scholarships of less than \$25,000 per annum. Other higher degree candidates are listed later in the report.

FELLOWSHIPS

Jane Lloyd NHMRC Training Fellowship. Addressing variations in the implementation of guidelines for preventive activities in general practice. 2011-2016

SCHOLARSHIPS

***Nouhad El Haddad** COMPARE-PHC Postgraduate Research Scholarship. 2013-2016

***Fiona Haigh** NHMRC Postgraduate Research Scholarship. 2013-2016

***Hyun Song** UNSW Tuition Fee Scholarship (TFS) + 2016-2019

*Also received CPHCE top up for lower paying PhD scholarships

AWARDS

Gudaga Program Leader The CAGES Foundation (2015-2018)

Andrew Knight Best Clinical Tutor, Fairfield Hospital 2016

Siaw-Teng Liaw One of the 100 Internationally recognised health informaticians elected to the inaugural honour class of the International Academy of Health Sciences Informatics

Michael Tam Prestigious Faculty of Medicine Conjoint Teaching Award (Best Service in teaching Delivery)



Gudaga group



TEACHING

Our teaching within the Faculty of Medicine, elsewhere in UNSW and for other universities and organizations allows us to share current research with students and enables staff to develop and maintain their teaching experience. Below is a summary of teaching by Centre staff in 2016.

UNDERGRADUATE MEDICINE AT UNSW

Subject	Lecturer(s)
Foundation Course	Mark Harris, Elizabeth Harris, Katherine Hirono
Independent Learning Project – student placement	Mark Harris (supervisor), Dr Michael Tam,
Phase 1 Clinical Teaching	Dr Andrew Knight, Dr Michael Tam, Prof Siaw Teng Liaw
Phase 2 Society and Health	Prof Siaw-Teng Liaw, Dr Michael Tam
Phase 3 Primary Care	Prof Siaw-Teng Liaw, Dr Michael Tam, Dr Andrew Knight
Talking about health inequities	Katherine Hirono (guest lecturer)
HIA and Other Forms of Assessment Equity in HIA	Ben Harris-Roxas (guest)
Equity Focused HIA	Ben Harris-Roxas (guest)
The role of primary health care in achieving equity	Ben Harris-Roxas (guest)
Chronic physical and mental health conditions	Ben Harris-Roxas (guest)
A career in health promotion	Evelyne de Leeuw (guest lecturer)
Determinants of health	Evelyne de Leeuw (guest lecturer)

a) MPH Electives run through CPHCE

Subject	Lecturer(s)
Health Impact Assessment PHCM9628	Fiona Haigh (guest lecturer), Ben Cave, Katherine Hirono (convenor), Marilyn Wise (lecturers), Ben Harris-Roxas (guest),
Inequalities in Health PHCM9626	Elizabeth Harris, Jane Lloyd (course co-ordinator), Evelyne de Leeuw, Katherine Hirono, Jude Page, Peter Sainsbury, Hyun Song, Marilyn Wise(lecturers), Ben Harris-Roxas (guest),
Prevention and management of chronic disease PHCM9129	Mark Harris, Heike Schütze (coordinators), Elizabeth Denney-Wilson, Sarah Dennis, Mary-Beth MacIsaac, Catherine Spooner, Jane Taggart (lecturers), Ben Harris-Roxas (guest),
Principles and Practice of Primary Health Care Services in the Community PHCM9615	Julie McDonald (course co-ordinators); Mark Harris, Jane Lloyd, Ben Harris-Roxas (guest),

b) Contributions to other MPH Courses

Subject	Lecturer(s)
Introduction to Public Health	Elizabeth Harris, Patrick Harris, Katherine Hirono
Development human rights and health	Fiona Haigh
Foundations in Public Health	Jane Lloyd (tutor)
Principals of Primary Health Care	Heike Schütze

Other Undergraduate and Graduate Teaching

Subject	Lecturer(s)
Work effectively with Aboriginal and Torres Strait Islander peoples	Heike Schütze (Coordinator and lecturer)
How to do HIA in a nutshell	Katherine Hirono (guest lecturer)
Environmental Health ENVS819	Ben Harris-Roxas (guest),
Lifespan and Health	Annette Riley (tutor)
Culture, Identity and Diversity	Annette Riley (tutor)
Organisational Practice	Annette Riley (tutor)

Other Teaching

Subject	Lecturer(s)
Supervision of GP Registrars in Practice for GP Synergy	Siaw-Teng Liaw, Andrew Knight, Joel Rhee, Michael Tam, Nicholas Zwar (supervisors)
HIA and Human Rights Health Impact Assessment, Healthy Cities, Masters in Public Health, University of California, Berkeley	Fiona Haigh (guest lecturer)

Short Courses and Workshops

Course	Lecturer(s)
Improving access to quality health services to improve health equity: learning by Doing. Two-day intensive workshop + mentoring.	Elizabeth Harris, Marilyn Wise, Heike Schütze, Telphia-Leanne Joseph
Health Impact Assessment Learning by Doing Training	Fiona Haigh and Katie Hirono (coordinators and lecturers), Elizabeth Harris (lecturer)
Health Impact Assessment International Symposium: Health in All Policies, The Korea Institute for Health and Social Affairs (KIHASA), Seoul, Korea	Fiona Haigh (guest lecturer)

PHD RESEARCH STUDENTS

The Centre provides many opportunities for research students. In 2016 a total of 8 PhD students were enrolled at the Centre (including a number of CPHCE staff members). In addition, CPHCE staff co-supervised a number of students from other Universities.

Name	Thesis Title	Supervisor/ Co-supervisor	Expected Completion/ Award Date
Anna Williams*	Integrating chronic illness self-management plans with primary care management: a clarification model of patient-provider care congruence	Mark Harris, Patricia Bazeley	2017
Fatema Khatun	An assessment of community readiness for mHealth in rural Bangladesh	Siaw-Teng Liaw, Anita Heywood, Pradeep Ray	2016
Fiona Haigh*	From advocacy to action: Utilising Health Impact Assessment as a tool to realise the right to health.	Patricia Bazeley, Lynn Kemp	2017
Jitendra Jonnagaddala	Empirical methods for determination of coronary risk using electronic health records	Siaw-Teng Liaw/Blanca Gallego Luxan, Pradeep Ray	2017
John Lewis	Enhance information systems to support general practitioners to manage the monitoring and treatment of colorectal cancer survivors in accordance with the principles of evidence based practice.	Siaw-Teng Liaw/Ben Smith, Pradeep Ray	2019

Name	Thesis Title	Supervisor/ Co-supervisor	Expected Completion/ Award Date
Nouhad (Nina) El Haddad*	Ethnicity and health literacy for weight management in non-English speaking migrants attending primary health care	Mark Harris, Elizabeth Denney-Wilson, Nighat Faruqi, Catherine Spooner	2017
Shona Dutton	Quantifying physical activity behaviour in a primary care setting - an instrument for measuring physical activity change in general practice	Sarah Dennis, Mark Harris	Completed 2016
Kate Short	The variability in vulnerable children's communication development over time and the impact of treatment.	Lynn Kemp (UWS), Dr Jenny Knight, Dr Tricia Eadie (Uni Melb)	2018
Pankaj Garg	Well Child Care	John Eastwood, Siaw-Teng Liaw	2018
Hyun Song	Measurement and Meaningful Use of Patient Experience in Australian Primary Health Care	Mark Harris, Jean-Frederic Levesque, Sarah Dennis	2019
Siggi Zapart*	Effective sustained nurse home visiting: who benefits, why and how?	Lynn Kemp, Jenny Knight	2017
Sue Woolfenden	Inequity in Developmental Vulnerability, its determinants and the role of access to prevention and early intervention services	Lynn Kemp, Valsa Eapen, Katrina Williams	2017

* CPHCE Staff enrolled in post-graduate study



ILP RESEARCH STUDENTS

Name	Thesis Title	Supervisor/ Co-supervisor	Completion
Genevieve Fair	Access to primary health care for Asylum seekers	Mark Harris, Mitchell Smith	2016
Damien Gill	Health literacy for refugees in Canterbury	Mark Harris, Elizabeth Harris, Jane Lloyd	2016

MASTER OF PUBLIC HEALTH RESEARCH STUDENT (MPH)

Name	Thesis Title	Supervisor/ Co-supervisor	Completion
Alana Crimeen	Scoping review of Healthy Airports	Katie Hirono, Ben Harris-Roxas	2016
Teressa Wood	Literature review factors associated with HIA effectiveness and their application for low resource settings	Ben Harris-Roxas	2016
Vannie Krishnan	Building Workforce Capacity to work in Locational Disadvantage	Siggi Zapart, Ben Harris-Roxas	2016





PHD STUDENT PROFILE

TEACHING

Hyun Song

I started my PhD at the Centre for Primary Health Care and Equity in early 2016. Before this, I had joined the Centre as a Research Officer in June 2015 as a Research Officer working on various projects relating to equitable access and patient-centred care, including primary care innovations to improve access in vulnerable populations (IMPACT), health literacy of health care organisations, and using the Patient Activation Measure (PAM) as an intervention tool. All of these projects were instrumental in shaping my own PhD topic and have provided me with important contextual knowledge of Australian primary care that I use in my research today.

My PhD study is on measuring the experience of chronic disease patients in Australian general practice, and how their feedback can be used to improve the quality of care they receive. In Australia, patient reported experience measures (PREMs) are captured mainly in acute care settings but at the primary care level this is not well developed beyond surveys administered for accreditation of general practices. No standardised, practice-based survey tool exists in this context in Australia and certainly not for service improvement. Part of this research is aiming to develop a patient experience survey tool that is tailored to the experiences of Australian chronic disease patients, with the direct input of these patients, their carers, and care providers. And a well-designed patient survey tool, administered in the right context using the right method, can generate the kind of information that not only benefits the patients, but makes the clinician's job easier down the line.

It's been a great experience so far: I have been able to travel to many different suburbs of Sydney to interview practitioners ranging from experienced GPs and practice nurses who have been working in their community for decades, to GP registrars who are brand new to their job. Some are solo GPs, others work in large group practices; some are practice owners, and some work in several different clinics throughout the week. The clinicians I've interviewed work with a diverse group of patient populations across Sydney but all share the same thing in common: they really want to do the best they can – with the resources available – to give their patients 'good quality' care. And needless to say, how they defined 'quality' varied greatly depending on their circumstances. That's been a very interesting finding so far.

Interviewing these participants has been eye-opening, sometimes challenging, and mainly very encouraging. In addition to hearing their stories, I have been really enjoying the opportunity to explore different corners of Sydney that I would otherwise not have even heard of. As an international student, it's given me an even deeper appreciation for Sydney and the diversity of communities that make up this vast city. Sometimes I even feel a little bit guilty going on these interviews because it feels like a fun field trip rather than academic research! I am very excited for the next set of interviews – this time with patients and their carers.

I am extremely happy with my PhD experience so far, and feel very grateful to be doing my research at CPHCE. The support I receive from my supervisors – Prof Mark Harris, Dr Sarah Dennis, and Dr Jean-Frederic Levesque – has been so helpful in shaping me into a better, more confident, researcher. The best advice I've received from them so far has been to not worry about doing a 'perfect' project and to just keep things moving. My PhD experience has been an exercise in self-reassurance, and trying to move past some of my insecurities as a researcher and as a person. And in that sense, choosing to do a PhD has been one of the most gratifying decisions I've ever made.



KNOWLEDGE EXCHANGE & CAPACITY BUILDING

CPHCE is committed to making a difference, not only to the evidence base, but also to getting research knowledge into action. We do this in many ways: with our research hubs, academic publications, working with PHNs and LHDs, events and so on. In this section, we describe a range of the events conducted in 2016, including seminars, webinars, workshops and forums. These events are often done collaboratively with national partners and international experts. Participants include policy makers, practitioners, academics and others.

We recognise the financial support of the NSW Ministry of Health, Population Health & Health Services Research Support Program (PHHSRSP) funding, that contributes significantly to making these events accessible to staff of the NSW health system.

LIST OF EVENTS

Name	Presenters	Date	Location	Number of registration
Primary and Community Health 45 and up cohort dissemination forum	Prof Jean-Fred Levesque A.Prof Elizabeth Comino Prof Mark Harris	21-March-16	Boral Lecture Theatre, AGSM building, UNSW	47
COMPARE-PHC Webinar Managing obesity in general practice	Prof Jon Karnon Prof Jodi Gray Prof Mark Harris	26-May-16	N/A	Not Known
COMPARE-PHC Health Literacy Symposium 2016: Health Literacy for Preventive Care in Primary Health Care Settings	Prof Don Nutbeam Prof Mark Harris Prof Richard Osborne Naomi Poole Prof Kristen McCaffery A/Prof Jane Llyod	2-June-16	John B Reid Theatre, AGSM Building, UNSW	156
COMPARE-PHC Health Literacy Seminar: Why does it matter?	Prof Mark Harris Dr Prabha Lakhan Prof Noel Hayman	14-June-16	Inala Indigenous Health Service, Queensland Health, Inala	Not Known
The Role of the Health System in Reducing Health Inequity Seminar	Sarah Simpson Prof Don Nutbeam, Dr Teresa Anderson Gerry Marr Prof Peter Sainsbury Julie Dixon Prof Evelyne de Leeuw Marilyn Wise	29-June-16	Wallace Wurth Building, UNSW	127
2016 CPHCE Annual Forum	Terry Findlay Allen Madden Prof Mark Harris Prof Ian Webster Dr Cassandra Goldie Prof Evelyne de Leeuw Amy Prince Dr Julie McDonald A/Prof Elizabeth Harris Prof Rodney Phillips	24-Aug-16	John Niland Scientia Building, UNSW	114
ACI Health Care Neighbourhoods and Integrated Care Workshop	Terry Findlay Chris Shipway Dr Andrew Knight Dr Pim Valentijn Prof Chris Van Weel Rhiannon Beck Rachel Norman Dr Julie McDonald	1-Dec-16	UNSW CBD Campus, 1 O'Connell Street, Sydney	100



Ian Webster Health for All Oration
Dr Cassandra Goldie CEO of
Australian Council of Social Service



2016 CPHCE ANNUAL FORUM

Wednesday 24 August 2016, John Niland Scientia Building, UNSW Australia

The CPHCE Annual Forum is an important calendar event where we showcase our current research and recognise organisations and individuals with whom we have worked and have assisted us in our research. It is also a networking opportunity where our staff can meet and socialise with staff from our partner organisations. Over 120 staff, research partners and colleagues from interstate attended the 2016 Annual Forum.



Individual Partnership Award
Ms Karen Edwards and the Dean of
Medicine, Professor Rodney Phillips



Individual Partnership Award
Mr Mark Thornell and the Dean of
Medicine, Professor Rodney Phillips



Organisational Partnership Award
GP Synergy accepted by Professor
Siaw-teng Liaw. GP Synergy
Director



Health Impact Assessment Partnership Award 2016
Airds Bradbury Renewal Project





COMPARE-PHC HEALTH LITERACY SYMPOSIUM 2016

Thursday 2nd June 2016, John B Reid Theatre, UNSW Sydney

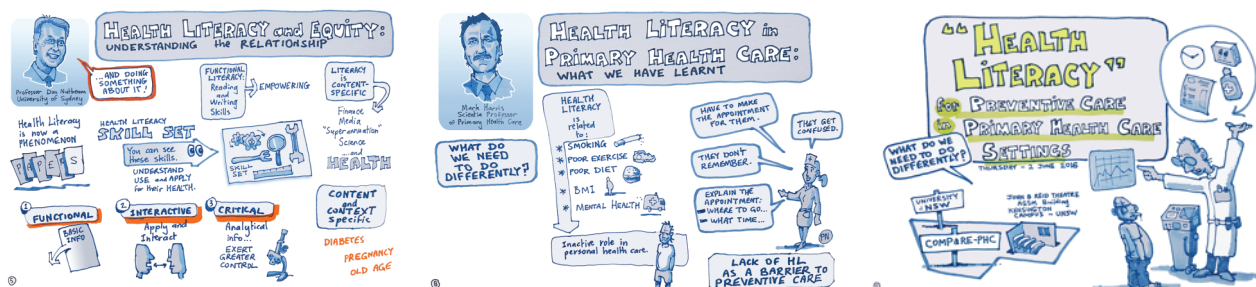
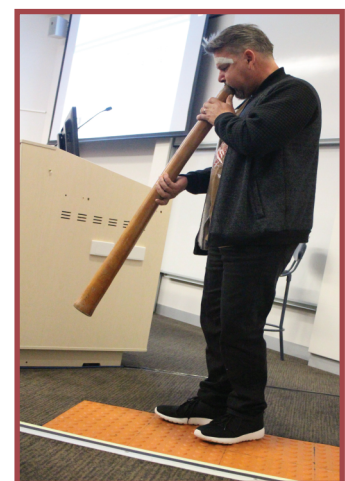
Health literacy is about how people understand information about health and health care, and how they apply that information to their lives, use it to make decisions and act on it. When people lack basic health literacy skills, like understanding health advice and following the instructions of a PHC provider, they find it difficult to maintain their well-being and get the health care they need. Low levels of individual health literacy contribute to poorer health outcomes, increased risk of an adverse event and higher healthcare costs.

The Centre for Obesity Management and Prevention Research Excellence In Primary Health Care (COMPare-PHC: a multi-institution research centre led by CPHCE) hosted a symposium to discuss health literacy issues and consider what primary health care can do differently to address the issues raised.

Internationally recognised experts on health literacy and primary health care showcased the latest evidence on effective strategies for improving health literacy and discuss the implications for preventing and managing obesity in primary health care settings. These included Professor Don Nutbeam, developer of the health literacy model that delineated functional, interactive and critical health literacy; Naomi Poole from the Australian Commission on Safety and Quality in Health Care, which developed the Australian government's Health Literacy National Statement; Professor Richard Osborne, developer of the Health Literacy Questionnaire and the Ophelia Approach and Professor Kirsten McCaffery, leader of the International Health Literacy Network. CPHCE researchers, Professor Mark Harris and Dr Jane Lloyd also presented their work on health literacy.

The forum attracted over 100 people from Local Health districts, government, Primary Health Networks, university, non-government organisations and health service providers. Most (n=85) attended the forum, while a further 33 registered to participate via webinar. Feedback was positive, with most of those who completed the evaluation forms reporting that the content of the forum increased their knowledge of the topic (96%) and that they anticipate being able to use this knowledge in their job (93%).

An artist was employed to record the key messages of the forum. The presentations and discussions are available on the web: <http://compare-phc.unsw.edu.au/node/369>





**KNOWLEDGE
EXCHANGE
& CAPACITY
BUILDING**

THE ROLE OF THE HEALTH SYSTEM IN REDUCING HEALTH INEQUITY SEMINAR

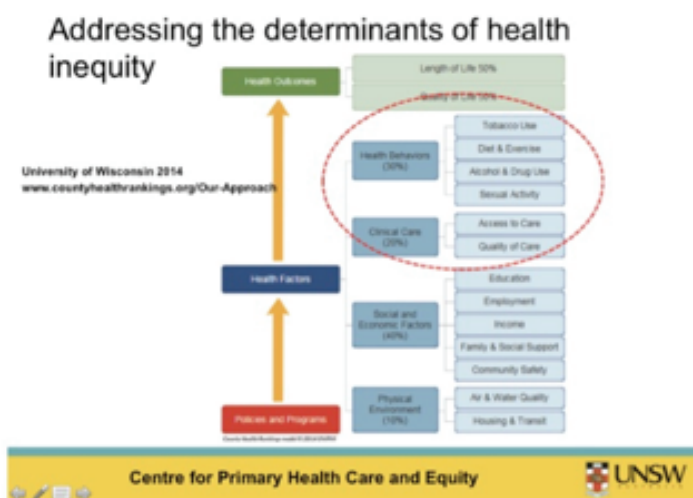
29 June 2016, Wallace Wurth Building, UNSW

There is a growing gap between the life expectancy of the most and least advantaged people in NSW. These unfair and potentially preventable differences place a heavy burden on the people affected, their families and the health system. CPHCE hosted a forum that brought together international thought leaders, local decision-makers, researchers and service providers to discuss the latest thinking on the role of the health system in reducing health inequity. A Q&A session with Local Health District Chief Executives enabled discussion about balancing acute services and population health needs with equity.

International experts included Sarah Simpson and Don Nutbeam. Sarah Simpson has worked in the World Health Organization (WHO) and across Europe addressing health equality through health systems, including developing the ground-breaking report “Putting our own House in Order: examples of health-system action on socially determined health inequalities”. Don Nutbeam was Head of Public Health in the UK Department of Health under Tony Blair. Between 2000 and 2003 he was responsible for leading policy development within the Department and across government on a range of complex and large-scale public health challenges including health equity policy.

CPHCE presentations included Marilyn Wise with an overview of current thinking on the role of the health system in reducing health inequity, Jude Page on hospitals in the home, Karen McPhail-Bell on the Can Get Healthy in Canterbury project.

The forum was fully booked with 127 registrations from Local Health Districts, Primary Health Networks, NSW Health, academic institutions, non-government organisations and health service providers.





ACI HEALTH CARE NEIGHBOURHOODS AND INTEGRATED CARE WORKSHOP

1st December 2016, UNSW CBD Campus, 1 O'Connell Street

A number of initiatives are underway to apply the principles of the patient centred medical home in the Australian context. To be effective in improving integration it is important to ensure that any approach recognises the broader concepts of health neighbourhoods, inter sectoral partnerships and networks.

This event brings the experiences and lessons from the implementation of the Rainbow Model of Integrated Care and international primary care developments through two visiting academics from the Netherlands, Dr Pim Valentijn and Professor Chris van Weel, to our local context

ACI will also take the opportunity to launch its new website 'Navigating the Health Care Neighbourhood'



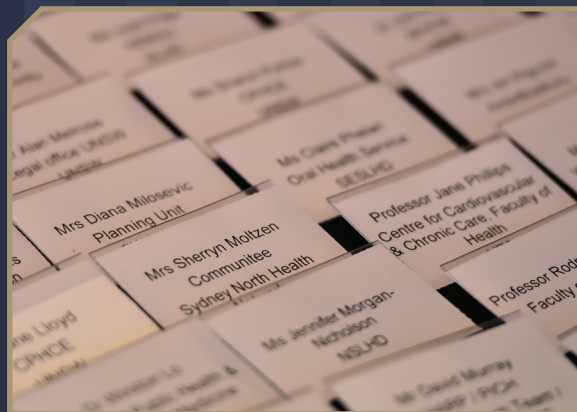
Rainbow Model of Integrated Care (RMIC)



EXPERIENCES & LESSONS LEARNED

STAFF MEMBERSHIP OF EXTERNAL COMMITTEES

Andrew Knight	<ul style="list-style-type: none"> ▪ The Nepean Blue Mountains Primary Health Network ▪ SWSLHD Cancer Services Governance Committee ▪ Fairfield Hospital Clinical Council ▪ Fairfield Hospital Research & Innovations Committee ▪ NPS Medicinewise Board Director ▪ The Improvement Foundation (APCC) ▪ The Australian Commission on Safety and Quality in Healthcare Primary Care Committee
Ben Harris-Roxas	<ul style="list-style-type: none"> ▪ Member, Editorial Board of Impact Assessment and Project Appraisal ▪ Member, Editorial Board of Environmental Impact Assessment Review ▪ Associate Editor, BMC Public Health ▪ Convenor, Global Working Group on Health Impact Assessment, International Union for Health Promotion and Education ▪ Member, NSW Committee, Australasian Evaluation Society ▪ Judging panel, Health in All Policies Awards, Christchurch City Council and Canterbury District Health Board
Elizabeth Comino	<ul style="list-style-type: none"> ▪ Waran Warin Steering Committee
Elizabeth Harris	<ul style="list-style-type: none"> ▪ International Union for Health Promotion and Education (IUHPE), Global Working Group on Health Impact Assessment
Evelyne de Leeuw	<ul style="list-style-type: none"> ▪ Ingham Health Research Institute Scientific Advisory Committee ▪ SWSLHD Population Health Division Executive
Fiona Haigh	<ul style="list-style-type: none"> ▪ International Union for Health Promotion and Education (IUHPE) ▪ Global Working Group on Health Impact Assessment
Katie Hirono	<ul style="list-style-type: none"> ▪ President SOPHIA
Gawaine Powell Davies	<ul style="list-style-type: none"> ▪ Primary Health Care Research Information Service Strategic Advisory Group ▪ UTS Ethics Committee
Joan Silk	<ul style="list-style-type: none"> ▪ Liverpool Community Drug Action Team
Julie McDonald	<ul style="list-style-type: none"> ▪ Primary Health Partnership Committee ▪ SESLHD/CPHCE Research Hub Operations Committee ▪ SESLHD Integrated Care Strategy Steering Committee
Mark Harris	<ul style="list-style-type: none"> ▪ Inner Western Sydney Medicare Local Board ▪ Medical Journal of Australia Content Review Committee ▪ National Diabetes Data Working Group ▪ National Heart Foundation Clinical Issues Committee ▪ NHMRC Prevention and Community Health Committee ▪ NHMRC Mental Health and Parenting Working Committee ▪ Primary Health Care Research, Evaluation and Development (PHCRED) Strategy Advisory Committee ▪ RACGP Quality Committee ▪ RACGP Red Book Task Force ▪ RACGP SNAPW guide working group (Chair)
Michael Tam	<ul style="list-style-type: none"> ▪ SESLHD/CPHCE Research Hub Operations Committee SWSPHN Mental Health Advisory Committee ▪ Fairfield Hospital Clinical Council ▪ Fairfield Hospital Research & Innovations Committee ▪ Fairfield Hospital General Clinical Training Committee ▪ Society and Health design and Implementation Group (DIF) ▪ Primary Care Course DIG ▪ Mental health Network Executive Committee, NSW ▪ Pharmacotherapy Advisory Group, Mental Health Commission of NSW ▪ RACGP National research and Evaluation Ethics Committee
Nicholas Zwar	<ul style="list-style-type: none"> ▪ International Primary Care Respiratory Group Education Committee ▪ Lung Foundation COPD-X Evaluation Committee ▪ Lung Foundation COPD-X Concise Guide for Primary Care Writing Committee ▪ National Heart Foundation, National Blood Pressure & Vascular Disease Advisory Committee ▪ NSW Health Tobacco Senior Officers' Steering Group ▪ RACGP Smoking Cessation Guidelines Content Advisory Group (Chair) ▪ RACGP SNAPW guide working group
Siaw-Teng Liaw	<ul style="list-style-type: none"> ▪ SE Sydney Medicare Local Needs Assessment Steering Group (Chair) SWSLHD Research & Teaching Committee ▪ SWSLHD-SWSPHN Integrated Health Committee Member ▪ SWSLHD Human Research Ethics Committee ▪ Fairfield Hospital Clinical Council ▪ NSW Acute Care Task Force ▪ NPS MedicineInsight, Data Advisory Committee ▪ RACGP National research and Evaluation Ethics Committee ▪ WHO Collaborating Centre for Health ▪ IMIA Primary Care Informatics WG ▪ AMIA Ethics Committee
Terry Findlay	<ul style="list-style-type: none"> ▪ Chronic Care Network Executive Committee – Agency for Clinical Innovation ▪ Primary Health Stakeholders Meeting – Agency for Clinical Innovation ▪ SE and Central Sydney Primary Health Care Partnership Committee ▪ HERDU Executive Steering Committee – Sydney LHD ▪ SEaRCH Operations Committee – SE Sydney LHD ▪ Health Equity Alliance-NCOSS ▪ UNSW/ACOSS Poverty & Inequality Initiative



PARTNERS AND AFFILIATES

We collaborate with many different individuals and organisations. Some of our main partners in 2015 are listed below.

UNSW

- Translational Cancer Research Network
- Biomedical Systems Research Laboratory, School of Electrical Engineering and Telecommunications
- Faculty of the Built Environment
- Faculty of Medicine Lifestyle Clinic
- Institute for Health Innovation: Centre for Clinical Governance and Centre for Health Informatics
- School of Business (through Asia Pacific Ubiquitous Health Research Centre)
- School of Public Health and Community Medicine
- Social Policy Research Centre

HEALTH DEPARTMENTS

- Agency for Clinical Innovation (ACI)
- Australian Government Department of Health and Ageing
- Bureau for Health Information (BHI)
- NSW Health
- NSW Kids and Families
- Victorian Department of Health
- NSW Ministry of Health Centre for Epidemiology & Evidence
- Tasmanian Department of Health and Human Services
- WA Health

HEALTH SERVICES

- Hunter New England Local Health District
- La Perouse Aboriginal Community Controlled Health Service
- Inala Aboriginal Health Service
- South Eastern Sydney Local Health District
- South Western Sydney Local Health District
- Sydney Local Health District
- Tharawal Aboriginal Corporation
- Western NSW Local Health District
- Western Sydney Aboriginal Medical Service
- Gandangarra Aboriginal Health Services

OTHER GOVERNMENT DEPARTMENTS

- NSW Department of Family and Community Services
- NSW Department of Education and Communities
- Victorian Department of Education and Early Childhood Development

LOCAL GOVERNMENT

- Canterbury City Council
- Liverpool City Council
- Wollondilly Shire Council

AUSTRALIAN UNIVERSITIES AND RESEARCH INSTITUTES

- Australian National University:
- Australian Primary Health Care Research Institute
- National Centre for Epidemiology and Population Health



- University of Sydney:
- Broken Hill University Department of Rural Health
- Faculty of Health Sciences
- Northern Rivers University Department of Rural Health
- Bond University
- Charles Sturt University
- Curtin University
- Flinders University
- The George Institute for Global Health
- Ingham Institute for Applied Medical Research
- James Cook University
- LaTrobe University
- Lowitja Institute
- Macquarie University
- Royal Children's Hospital Centre for Community Child Health (CCCH), Murdoch Children's Research Institute, University of Melbourne
- School of Rural Health; Southern Academic Primary Care Research Unit (SAPCRU), Monash University
- Southgate Institute for Health, Society and Equity, Flinders University
- University of Adelaide
- University of Melbourne
- University of Newcastle
- University of Queensland
- University of Technology Sydney
- University of Western Sydney
- Woolcock Institute of Medical Research

NATIONAL

- Australian Medicare Local Association
- The Royal Australian College of General Practitioners
- Australian Council of Social Service

PRIMARY HEALTH NETWORKS

- Central and Eastern Sydney PHN
- South Western Sydney PHN
- Western NSW PHN





NON-GOVERNMENT ORGANISATIONS

- Ashcroft High School
- Australian Practice Managers' Association
- Australian Research Alliance for Children and Youth
- Benevolent Society
- Beyond Blue
- Bupa Health Foundation
- Cabramatta Community Centre
- Chronic Illness Alliance
- Community 2168
- Ernst and Young
- Fairfield Migrant Resource Centre
- Gandangara Aboriginal Health Service
- Good Beginnings Australia
- GP Synergy
- Hepatitis NSW
- Karitane
- Kurranulla Aboriginal Community
- La Perouse/ Botany Bay Aboriginal Corporation
- Liverpool Migrant Resource Centre
- Maules Creek Community Council
- Miller Art and Fact
- National Aboriginal Community Controlled Health Organisation
- National Prescribing Service
- NSW Service for the Treatment and Rehabilitation of Torture and Trauma Survivors (STaRTTS)
- NSW Users and AIDS Association
- Nutrition Australia
- National Aboriginal Community Controlled Health Organisation

- PolicyWise for Children & Families
- Royal Australian College of General Practitioners
- South West Youth Peer Education
- Warwick Farm Neighbourhood Centre

INTERNATIONAL

- Alberta Health Services
- Birkbeck College, London
- CDC Chronic Disease Prevention
- China-Australia health and HIV/AIDS facility (CAHAF)
- Department of Family Medicine, University of Ottawa
- Edinburgh University
- Gesundheit Osterreich GmbH
- Institut National de Santé Publique du Québec
- International SOS
- International Union for Health Promotion and Education
- Kings College London
- Kurume University
- Maastricht University
- Manchester University
- McGill University
- National Primary Care Research and Development Centre, University of Manchester, UK
- Robert Woods Johnston Medical School, New Jersey
- Seoul National University
- The Nuffield Trust
- University of British Columbia
- University of California (San Francisco)



PARTNERS AND AFFILIATES

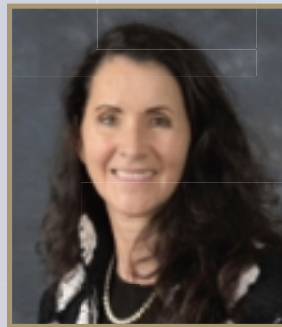


- University of Central Lancashire
- University of Colorado
- University of Otago
- University of Ottawa
- University of Surrey
- University of Sussex
- University of Washington
- Victoria University (Wellington, New Zealand)
- Health Impact Project, Pew Charitable Trusts

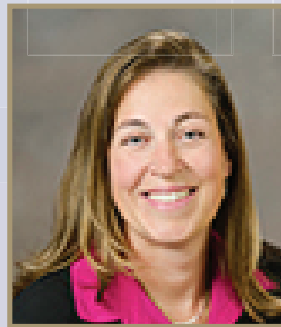


LIST OF VISITING ACADEMICS

Dr Jeannie Haggerty,
Department of Family
Medicine, McGill
University, Montréal



A/Prof Jennifer Devoe,
Department of Family
Medicine, Oregon Health &
Science University, Portland



Prof Kevin Grumbach, Family and
Community Medicine, University
of California, San Francisco



Miss Sarah Simpson,
EquiACT



Dr. Pim Valentijn,
Essenburgh Training and
Consultancy, Netherlands



**Professor Chris van
Weel,** Australian
National University,
Canberra



Prof Helen Berry,
Faculty of Health,
University of
Canberra, Canberra





VISITING RESEARCHER PROFILE

PARTNERS AND
AFFILIATES

Miss Sarah Simpson, EquiACT

Sarah Simpson, is a Conjoint Lecturer, with the University of NSW and worked at CHETRE from 2001-2005 as a member of the team that developed the NSW Health and Equity Statement, the project manager for the initial Health Impact Assessment learning by doing program, and in the development of the framework for equity-focused HIA. She currently works as an independent consultant as Director of EquiACT, living just outside Lyon, France and is also an Affiliate Research fellow at University of Glasgow, Scotland. Sarah's first degree was in Arts majoring in medieval history with a thesis on demonology and witchcraft in medieval France. From there she began her working life with the Commonwealth government in Canberra, starting in the Attorney-General's Department where she worked on the Royal Commission into Aboriginal Deaths in Custody. Simultaneously she started another undergraduate degree – Applied Science in Health Education – with a strong focus on the social determinants of health, social justice, equity and intersectoral action for health. Sarah then worked on healthy ageing policy, initially for Department of Veterans' Affairs and then the Department of Health and Aged Care. Her final year project for her Health Education degree focused on assessing the healthy ageing needs of older Australians to inform the development of a funding/grants program with attention to the social determinants and health equity issues.

Sarah then moved from Canberra to Sydney, working for the Department of Ageing and Disability on development of an intersectoral strategy for healthy ageing in NSW and then for NSW Health on a range of issues including revising a patient travel assistance scheme and performance management, before joining CHETRE in 2001. Soon after joining CHETRE she started her Masters in Public Health at UNSW – focusing on equity-focused public health policy and program development, implementation, impact assessment and evaluation. For her Masters project Sarah undertook one of the case studies for testing the draft equity-focused framework for HIA developed as part of National Public Health Program with a team from CHETRE, University of Newcastle and Deakin University.

In 2005, Sarah had the opportunity to work as the Coordinator for eight of the nine Knowledge Networks established to support and inform the work of the World Health Organisation (WHO) global Commission on the Social Determinants of Health. This was an amazing and privileged experience in working with different countries from Iran to India to the UK to advance action on health equity. In 2007, Sarah moved to work for the Venice Office of the WHO European Region, enabling her to work more closely with the Ministries of Health in the 53 countries covered providing a range of technical assistance and capacity building support to Ministries of Health on integrating the social determinants, gender and equity into public health programs and policies and overall health systems approaches, including Health Systems Performance Assessment.

Since establishing EquiACT, in 2012 Sarah has worked on a range of equity, gender and SDH projects for including but not limited to: development of a report on how gender and social determinants influence women's health in the WHO European Region; an equity focused evaluation of the Turkish national obesity plan; a project identifying and describing promising primary care approaches and practice models globally to inform primary care practice in the US; development of an SDH and equity situational analysis to inform development provincial health plan in Mozambique; and currently as part a project on learning from international experience on approaches to social participation and decision-making in health. Sarah has always maintained her collaboration and links with the CHETRE, the CPHCE and UNSW, becoming a conjoint lecturer in 2012 and returning on a regular basis to co-facilitate masterclasses and or workshops on health equity with other Centre staff. It has been an interesting and rewarding journey from a degree specialising in medieval history into Public Health. As life would have it Sarah currently lives not far from one of the regions that she focused on for her honors thesis on demonology!





PUBLICATIONS

BOOKS

1. de Leeuw EJ. HiAP Health in All Policies. From the Global to the Local. Washington DC: Pan American Health Organization; 2016 2016.

BOOK CHAPTERS

2. Andriessen K, Kryszynska K. A psycho-educational perspective on family involvement in suicide prevention and postvention. In: Wasserman D, editor. Suicide: An unnecessary death (2nd edition). Oxford: Oxford University Press; 2016. p. 333-44.
3. de Leeuw EJ. From research to policy and practice in public health. In: Liamputtong P, editor. Public health - local and global perspectives. Cambridge: Cambridge University Press; 2016. p. 217-37.

CONFERENCE PRESENTATIONS

4. Murray P, Corcoran K, Harris-Roxas BF, Jenkins C, editors. Provision of one-on-one patient education and coaching over the phone can improve asthma control in people with asthma. Thoracic Society of Australia & New Zealand and the Australian & New Zealand Society of Respiratory Science Annual Scientific Meeting; 2016/07/10; Perth: Wiley: 12 months.
5. Segelov E, Chan D, Harris-Roxas B, Lawrence B, Pavlakis N, Kennecke H, et al., editors. Identifying and prioritising Gaps in Neuroendocrine Tumour Research-results of the Delphi consensus project of the Commonwealth Neuroendocrine Tumour Research Collaboration (CommNETS). 13th Annual European Neuroendocrine Tumour Society conference; 2016/09/29; Barcelona.
6. de Leeuw E. Keynote, 'Historique, progression et bilan du mouvement des Villes et Villages en santé'. Agir ensemble - 30 ans d'action pour des communautés en santé, 12e Colloque Francophone International de Villes et Villages en Santé et des Villes-Santé de l'OMS. Montreal.
7. de Leeuw E. Keynote, 'Urban planning for healthy cities'. 7e Congrès Santé Environnement de la SFSE, Qualité de l'air et santé : science et échelles d'action. Strasbourg.
8. de Leeuw EJ. Making the apple fall. Shaping political will in juggling policies, problems and politics. Power to Persuade Symposium 2016. Melbourne.
9. de Leeuw EJ. Keynote. 'Health Promotion - Indignez-Vous'. Plenary 1 - From Ottawa to Vienna: 30 years of the Ottawa Charter. European Public Health Conference. Vienna.
10. de Leeuw EJ. 'Les avancées de la recherche en promotion de la santé ailleurs au Canada et dans le monde'. Journées Annuelles de Santé Publique. Montreal.
11. de Leeuw EJ. Public Seminar: Beyond stages and cycles: health policy weaving and juggling. 2016.
12. de Leeuw EJ, Chase L. How does area socio-economic status and centrality to city centre affect off-road cycling infrastructure provision in Melbourne. The Annual Conference of The Australian Sociological Association. Melbourne2016.



PUBLICATIONS



CPHCE Board of Directors



Executive Director
Professor Mark Harris



Director
Mr Terry Frisby

Directors



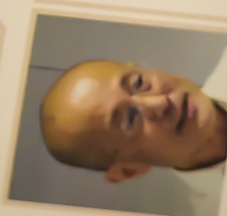
Professor Evelyn de Leeuw
Start from 01/01/2015



Ms Karen Edward
Until 31/08/2015



Associate Professor Elizabeth Harris



Professor Siaw Tang Litaw



Professor Nicholas Zwar



Dr Julie McDougald

© 2016 CPHCE. All Rights Reserved. For Primary Health Care and Equity



13. Harris MF, Parker SM, Prince A, Milosevic D, Thomas L. Impact of E/M/Telehealth Interventions on Access to Care for Vulnerable Groups With Chronic Illness: A Systematic Review. North American Primary Care Research Group (NAPCRG). Colorado Springs.
14. Prince A, Parker S, Harris MF, Dahrouge S. Challenges in addressing and measuring access to care for vulnerable groups from a realist review of e/m/telehealth interventions. Primary Health Care Research and Information Service (PHCRIS). Canberra ACT.
15. Thomas L, Song H, Parker S, Dahrouge S, Descoteaux S, Gunatillaka N. Utilising the RE-AIM framework in a realist review of health service brokerage. Primary Health Care Research and Information Service. Canberra ACT.
16. Vuong K, Hermiz O, Razee H, Richmond R, Zwar N. A qualitative study of the experiences of smoking cessation among patients with chronic obstructive pulmonary disease in Australian primary care. North American Primary Care Research Group Conference. Colorado Springs.
17. Vuong K, Hermiz O, Razee H, Richmond RL, Zwar N. A qualitative study on smoking cessation among general practice patients with chronic obstructive pulmonary disease. Royal Australian College of General Practitioners Conference. Perth.
18. Vuong K, Zwar N, Hermiz O, Razee H, Richmond RL. A qualitative study on smoking cessation among general practice patients with chronic obstructive pulmonary disease. Primary Health Care Research Conference. Canberra.

JOURNAL ARTICLES

19. Batterham PJ, Torok M, Krysinska K, Shand F, Calear AL, Cockayne N, et al. Best strategies for reducing the suicide rate in Australia: Response to Pirkis. *Australian and New Zealand Journal of Psychiatry*. 2016;50(4):386.
20. Billot L, Corcoran K, McDonald A, Powell-Davies G, Feyer AM. Impact Evaluation of a System-Wide Chronic Disease Management Program on Health Service Utilisation: A Propensity-Matched Cohort Study. *PLoS Medicine*. 2016;13(6).
21. Carrington MJ, Jennings GL, Harris M, Nelson M, Schlaich M, Stocks NP, et al. Impact of nurse-mediated management on achieving blood pressure goal levels in primary care: Insights from the Valsartan Intensified Primary care Reduction of Blood Pressure Study. *European Journal of Cardiovascular Nursing*. 2016;15(6):409-16.
22. Carter R, Lévesque JF, Harper S, Quesnel-Vallée A. Measuring the effect of Family Medicine Group enrolment on avoidable visits to emergency departments by patients with diabetes in Quebec, Canada. *Journal of Evaluation in Clinical Practice*. 2016.
23. Carter R, Quesnel-Vallée A, Plante C, Gamache P, Lévesque JF. Effect of family medicine groups on visits to the emergency department among diabetic patients in Quebec between 2000 and 2011: A population-based segmented regression analysis. *BMC Family Practice*. 2016;17(1).
24. Carter R, Riverin B, Levesque JF, Gariépy G, Quesnel-Vallée A. The impact of primary care reform on health system performance in Canada: A systematic review. *BMC Health Services Research*. 2016;16(1).
25. Cohen BE, Ateah CA, Chartier MJ, DeCoteau MA, Harris E, Serwonka K. Report of an equity-focused health impact assessment of a proposed universal parenting program in Manitoba. *Canadian Journal of Public Health*. 2016;107(1):e112-e8.
26. Comino EJ, Harris E, Page J, McDonald J, Harris MF. The 45 and Up Study: A tool for local population health and health service planning to improve integration of healthcare. *Public Health Research and Practice*. 2016;26(3).
27. de Leeuw E, Harris-Roxas BF. Crafting health promotion: from Ottawa to beyond Shanghai. *Environnement, Risques & Santé*. 2016.
28. de Leeuw E, Harris-Roxas BF. L'ingénierie de la promotion de la santé : d'Ottawa à l'après-Shanghai. *Environnement, Risques & Santé*. 2016.
29. De Leeuw E, Sparks M. The year urban health was r/deconstructed. *Health Promotion International*. 2016;31(1):1-4.

30. de Leeuw EJ. We Need Action on Social Determinants of Health – but Do We Want It, too?; Comment on “Understanding the Role of Public Administration in Implementing Action on the Social Determinants of Health and Health Inequities”. *International Journal of Health Policy and Management*. 2016.
31. de Leeuw EJ, Hoeijmakers M, Peters DTJM. Juggling Multiple Networks in Multiple Streams. *European Policy Analysis*. 2016.
32. Dennis S, Reddel HK, Middleton S, Hasan I, Hermiz O, Phillips R, et al. Barriers and outcomes of an evidence-based approach to diagnosis and management of chronic obstructive pulmonary disease (COPD) in Australia: a qualitative study. *Fam Pract*. 2016.
33. Dutton SN, Bauman A, Dennis SM, Zwar N, Harris MF. Resourcing an evolution of roles in general-practice: A study to determine the validity and reliability of tools to assist nurses and patients to assess physical activity. *Australian Journal of Primary Health*. 2016;22(6):505-9.
34. Dutton SN, Dennis SM, Zwar N, Harris MF. An explorative qualitative study on acceptability of physical activity assessment instruments among primary care professionals in southern Sydney. *BMC Family Practice*. 2016;17(1):1-12.
35. El-Haddad N, Spooner CJ, Faruqi N, Denney-Wilson E, Harris M. Readability and content analysis of lifestyle education resources for weight management in Australian general practice. *BMC Obesity*. 2016.
36. Fan E, Rhee JJ. A self-reported survey on the confidence levels and motivation of New South Wales practices nurses on conducting Advance Care Planning (ACP) initiatives in the general practice setting. *Australian Journal of Primary Health*. 2016.
37. Gardner K, Powell Davies G, Edwards K, McDonald J, Findlay T, Kearns R, et al. A rapid review of the impact of commissioning on service use, quality, outcomes and value for money: implications for Australian policy. *Australian Journal of Primary Health*. 2016;22(1):40-9.
38. Haggerty JL, Levesque JF. Validation of a new measure of availability and accommodation of health care that is valid for rural and urban contexts. *Health Expectations*. 2016.
39. Harris M. Strengthening prevention in primary care. *Public Health Research and Practice*. 2016;26(1).
40. Harris M. The interface between primary health care and population health: Challenges and opportunities for prevention. *Public Health Research and Practice*. 2016;26(1).
41. Harris MF, Advocat J, Crabtree BF, Levesque JF, Miller WL, Gunn JM, et al. Interprofessional teamwork innovations for primary health care practices and practitioners: Evidence from a comparison of reform in three countries. *Journal of Multidisciplinary Healthcare*. 2016;9:35-46.
42. Harris MF, Laws RA. Are there bad foods or just bad diets? *BMJ (Online)*. 2016;353.
43. Hirono K, Gleeson D, Freeman B. To what extent does a tobacco carve-out protect public health in the Trans-Pacific Partnership Agreement? *Public Health Research and Practice*. 2016;26(2).
44. Hirono K, Haigh F, Gleeson D, Harris P, Thow AM, Friel S. Is health impact assessment useful in the context of trade negotiations? A case study of the trans pacific partnership agreement. *BMJ Open*. 2016;6(4):855-4425.
45. Jayasinghe UW, Harris MF, Parker SM, Litt J, van Driel M, Mazza D, et al. The impact of health literacy and life style risk factors on health-related quality of life of Australian patients. *Health and Quality of Life Outcomes*. 2016;14(1).
46. Kaplun C, Knight J, Grace R, Dockett S, Perry B, Comino E, et al. Gudaga goes to school study: methods used in understanding school transitions and early education experiences of an urban Aboriginal cohort. *Educational Studies*. 2016;42(1):54-71.
47. Khanassov V, Pluye P, Descoteaux S, Haggerty JL, Russell G, Gunn J, et al. Organizational interventions improving access to community-based primary health care for vulnerable populations: a scoping review. *International Journal for Equity in Health*. 2016;15(1):1-34.
48. Krysinska K, Batterham PJ, Christensen H. Differences in the Effectiveness of Psychosocial Interventions for Suicidal Ideation and Behaviour in Women and Men: A Systematic Review of Randomised Controlled Trials. *Archives of Suicide Research*. 2017;21(1):12-32.

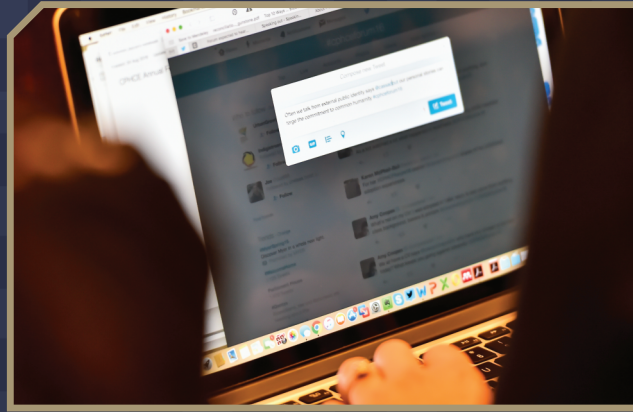
49. Krysinska K, Batterham PJ, Tye M, Shand F, Calear AL, Cockayne N, et al. Best strategies for reducing the suicide rate in Australia. *Australian and New Zealand Journal of Psychiatry*. 2016;50(2):115-8.
50. Laroche JL, Feldman DE, Levesque JF. Impact of type of medical specialist involvement in chronic illness care on emergency department use. *Healthcare Policy*. 2016;11(3):54-66.
51. Laws RA, Litterbach EKV, Denney-Wilson EA, Russell CG, Taki S, Ong KL, et al. A comparison of recruitment methods for an mHealth intervention targeting mothers: Lessons from the growing healthy program. *Journal of Medical Internet Research*. 2016;18(9).
52. Layani G, Fleet R, Dallaire R, Tounkara FK, Poitras J, Archambault P, et al. The challenges of measuring quality-of-care indicators in rural emergency departments: a cross-sectional descriptive study. *CMAJ Open*. 2016;4(3):E398-E403.
53. Liaw ST, Powell-Davies G, Pearce C, Britt H, McGlynn L, Harris MF. Optimising the use of observational electronic health record data: Current issues, evolving opportunities, strategies and scope for collaboration. *Australian Family Physician*. 2016;45(3):153-6.
54. Liaw ST, Wade V, Lau P, Hasan I, Furler J. Safe and effective cultural mentorship in general practice. *Australian Family Physician*. 2016;45(6):431-6.
55. Lloyd JE, Delaney-Thiele D, Abbott P, Baldry E, Mcentyre E, Malera-Bandjolan K, et al. How primary health care can better support the families of Aboriginal Australians in contact with the criminal justice system: a human rights approach. *Aboriginal and Islander Health Worker Journal*. 2016;40:25-33.
56. Murray-Parahi P, Edgar V, Descallar J, Comino E, Johnson M. ENSCOPE: Scoping the Practice of Enrolled Nurses in an Australian Community Health Setting. *International Nursing Review*. 2017;64(1):59-68.
57. Parker S, Fuller J. Are nurses well placed as care co-ordinators in primary care and what is needed to develop their role: A rapid review? *Health and Social Care in the Community*. 2016;24(2):113-22.
58. Partridge SR, Allman-Farinelli M, McGeechan K, Balestracci K, Wong ATY, Hebden L, et al. Process evaluation of TXT2BFIT: A multi-component mHealth randomised controlled trial to prevent weight gain in young adults. *International Journal of Behavioral Nutrition and Physical Activity*. 2016;13(1).
59. Pineault R, Borgès Da Silva R, Provost S, Breton M, Tousignant P, Fournier M, et al. Evolution of Experience of Care of Patients with and without Chronic Diseases following a Québec Primary Healthcare Reform. *Int J Chronic Dis*. 2016;2016:2497637.
60. Pineault R, Borgès Da Silva R, Provost S, Breton M, Tousignant P, Fournier M, et al. Impacts of Québec Primary Healthcare Reforms on Patients' Experience of Care, Unmet Needs, and Use of Services. *Int J Family Med*. 2016;2016:8938420.
61. Pineault R, Provost S, Borgès Da Silva R, Breton M, Levesque JF. Why Is Bigger Not Always Better in Primary Health Care Practices? The Role of Mediating Organizational Factors. *Inquiry : a journal of medical care organization, provision and financing*. 2016;53.
62. Pirkis J, Krysinska K, Cheung YTD, Too LS, Spittal MJ, Robinson J. "Hotspots" and "copycats": A plea for more thoughtful language about suicide - Authors' reply. *The Lancet Psychiatry*. 2016;3(1):20.
63. Radford K, Mack HA, Draper B, Chalkley S, Delbaere K, Daylight G, et al. Comparison of Three Cognitive Screening Tools in Older Urban and Regional Aboriginal Australians. *Dementia and Geriatric Cognitive Disorders*. 2015;40(1-2):22-32.
64. Richard L, Furler J, Densley K, Haggerty J, Russell G, Levesque JF, et al. Equity of access to primary healthcare for vulnerable populations: The IMPACT international online survey of innovations. *International Journal for Equity in Health*. 2016;15(1).
65. Russell CG, Taki S, Laws R, Azadi L, Campbell KJ, Elliott R, et al. Effects of parent and child behaviours on overweight and obesity in infants and young children from disadvantaged backgrounds: Systematic review with narrative synthesis Energy balance-related behaviors. *BMC Public Health*. 2016;16(1).
66. Schütze H, Pulver LJ, Harris M. The uptake of Aboriginal and Torres Strait Islander health assessments fails to improve in some areas. *Australian Family Physician*. 2016;45(6):415-20.
67. Strale M, Krysinska K, Overmeiren GV, Andriessen K. Geographic distribution of suicide and railway suicide in Belgium, 2008–2013: a principal component analysis. *International Journal of Injury Control and Safety Promotion*. 2016:1-13.

68. Tapsfield J, Hall C, Lunan C, McCutcheon C, McLoughlin P, Rhee JJ, et al. Most people in Scotland now benefit from anticipatory care before they die: an after death analysis of primary care records. *BMJ Supportive & Palliative Care*. 2016.
69. Vuong K, Hermiz O, Razee H, Richmond RL, Zwar N. The experiences of smoking cessation among patients with chronic obstructive pulmonary disease in Australian general practice: a qualitative descriptive study. *Family Practice*. 2016;33(6):715-20.
70. Zwar NA, Bunker JM, Reddel HK, Dennis SM, Middleton S, van Schayck OCP, et al. Early intervention for chronic obstructive pulmonary disease by practice nurse and GP teams: a cluster randomized trial. *Fam Pract*. 2016;33(6):663-70.

REPORTS

71. de Leeuw EJ, Simard P, Richardson M, Riva M, Philibert M, Parent AA, et al. Évaluation des effets de la Politique nationale de la ruralité sur la santé des ruraux et de leur communauté. *Rapport Scientifique Intégral*. Institut national de santé publique du Québec (INSPQ), Québec. 2016 2016/03/31/.
72. Harris M, faruqi N, Stocks N, Spooner CJ, Hermiz O, el h, et al. Weight management for patients in general practice tailored to health literacy. 2016 2016.
73. Harris-Roxas BF. Some suggestions for improving wider understanding of the work of population health. 10.13140/RG.2.2.29808.25606. Sydney: Croakey; 2016 2016/08/31/.
74. Harris-Roxas BF, Haigh F, Jaques K. Health Justice Partnerships in NSW: Program logic. Sydney: Centre for Health Equity Training, Research and Evaluation (CHETRE), part of the UNSW Australia Research Centre for Primary Health Care and Equity, a Unit of Population Health, South Western Sydney Local Health District, NSW Health, a member of the Ingham Institute; 2016 2016/10/03/.





FINANCIAL

CENTRE FOR PRIMARY HEALTH CARE AND EQUITY

Statement of Financial Performance

for the Year Ended 31 December 2016

	Notes	2016	2015
		\$000	\$000
Revenue			
Research Revenue		\$2,071	\$2,553
Consulting/Commercial Activities		\$34	\$76
Other Research Revenue		\$1,179	\$746
UNSW Contributions		\$404	\$386
UNSW Medicine Contributions	ii/iii	\$624	\$403
Other Revenue		\$174	\$84
Total Revenue		\$4,486	\$4,248
Expenses			
People Costs, oncots & other		\$3,773	\$3,702
Staff Costs			
Scholarship Stipends		\$77	\$63
Contract & Consulting Services		\$269	\$232
Consumables		\$12	\$14
Travel		\$69	\$114
Equipment < than \$5,000		\$1	\$8
Other Expenses		\$91	\$174
Total Expenses		\$4,292	\$4,308
Net Result before Depreciation		\$194	-\$60
Depreciation		\$3	\$3
Net Result after Depreciation	iv	\$191	-\$63

NOTES TO THE STATEMENT OF FINANCIAL PERFORMANCE

- i) The financial statement is prepared on an accrual basis for the year ended 31 December 2016.
- ii) The Centre (CPHCE) also recognises in-kind contributions provided to it by UNSW that are not brought to account in the Statement of Financial Performance - this includes space occupied at Level 3 Building G27 - AGSM, Randwick.
- iii) Includes contribution to salaries of 8 (2015 - 11) CPHCE staff

CONTACT US

MAIN CAMPUS

Executive Director: Professor Mark Harris
CPHCE, Level 3, AGSM Building,
UNSW SYDNEY NSW 2052
Tel: +61 2 9385 8384
Fax: +61 2 9385 8404
Email: m.f.harris@unsw.edu.au

Director: Terry Findlay
CPHCE, Level 3, AGSM Building,
UNSW SYDNEY NSW 2052
Tel: +61 2 9385 8401
Fax: +61 2 9385 8404
Email: t.findlay@unsw.edu.au

SOUTH EASTERN SYDNEY RESEARCH COLLABORATION HUB (SEARCH)

Director: Ben Harris-Roxas
CPHCE, Level 3, AGSM Building
UNSW SYDNEY NSW 2052
Tel: +61 2 9385 1508
Fax: +61 2 9385 8404
Email: b.harris-roxas@unsw.edu.au

OFF CAMPUS RESEARCH UNITS

Centre for Health Equity Training Research and Evaluation (CHETRE)

Director: Prof Evelyne de Leeuw
Ingham Institute, Level 3, 1 Campbell Street Liverpool
Tel: +61 2 8738 9310
Fax: +61 2 9602 8052
Email: e.deleeuw@unsw.edu.au

Academic General Practice Unit

Director: Professor Siaw-Teng Liaw
Ingham Institute, Level 3, 1 Campbell Street Liverpool
Tel: +61 2 8738 9343
Email: siaw@unsw.edu.au

Health Equity Research and Development Unit (HERDU)

Director: A/Prof Jane Lloyd
SLHD, Level 2, Marsden St, Camperdown
Tel: +61 2 9515 1234
Email: j.lloyd@unsw.edu.au

Please direct any inquiries regarding the Annual Report to
Terry Findlay at t.findlay@unsw.edu.au.

Further information about the Centre for Primary Health
Care and Equity can be found at www.cphce.unsw.edu.au

