

2024 SAMPLE CHARACTERISTICS

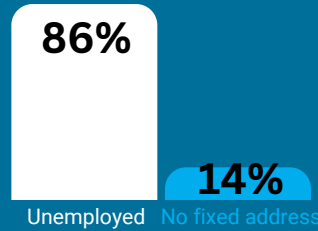


In 2024, 70 participants, recruited from Darwin, NT, were interviewed.



49 years **Male**

The median age in 2024 was 49, and 61% identified as male.

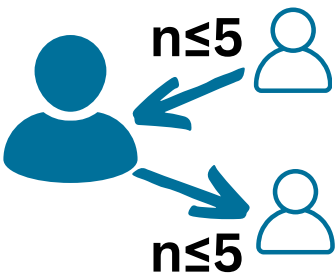


In the 2024 sample, 86% were unemployed and 14% had no fixed address.

- Injected heroin
- Injected methamphetamine
- Injected other illicit or non-prescribed drugs

Participants were recruited on the basis that they had injected drugs at least monthly in the previous 6 months.

INJECTING-RELATED RISKS AND HARMS



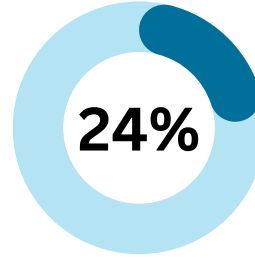
In 2024, few participants reported receptive and distributive sharing in the past month (n≤5, respectively).



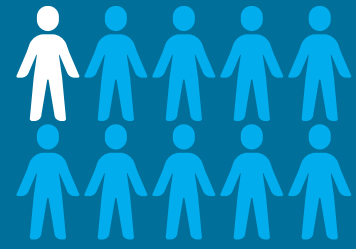
19%

2024

Percentage who reported re-using their own needles in the past month.

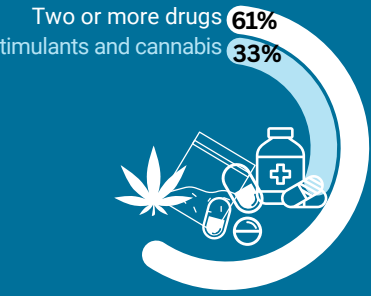


Percentage who reported injecting someone else after injecting themselves in the past month.



Few participants (n≤5) reported having an injection-related health issue in the past month.

OTHER HARMS



In 2024, 61% reported using two or more drugs on the day preceding interview: the most commonly used combination of drug classes was stimulants and cannabis (33%).



n ≤ 5

2024

In 2024, few participants (n≤5) reported past year non-fatal overdose.



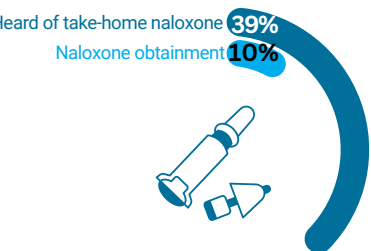
In 2024, 37% of participants reported a mental health problem in the 6 months preceding interview.

Depression **67%**
Anxiety **63%**



Among those who reported a mental health problem, the two most common mental health issues were depression and anxiety.

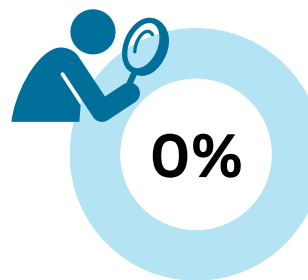
NALOXONE AND OTHER HARM REDUCTION STRATEGIES



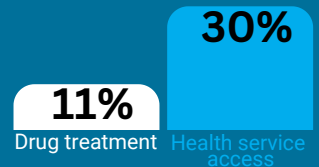
39% reported knowledge of take-home naloxone and 10% had obtained naloxone in the past 12 months.



Among those who were aware of naloxone, no participants reported ever using naloxone to resuscitate someone who had overdosed.

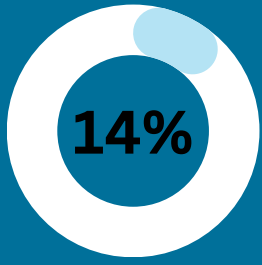


No participants reported that they or someone else had tested the content and/or purity of their illicit drugs in Australia in the past year.

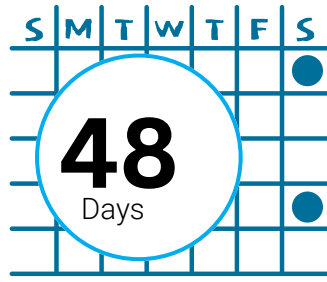


Percentage who reported current drug treatment and health service access for AOD support in the past six months.

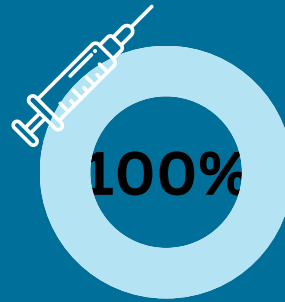
MORPHINE



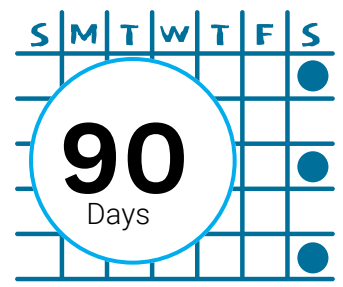
Past 6 month use of non-prescribed morphine.



Of those who had recently consumed non-prescribed morphine, the median frequency of use was 48 days.



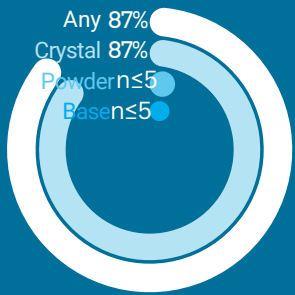
Of those who had recently consumed any morphine, all participants reported injecting it.



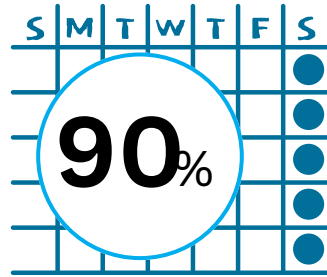
Of those who had recently injected any morphine, the median frequency of injection was 90 days.

METHAMPHETAMINE

FORM of methamphetamine



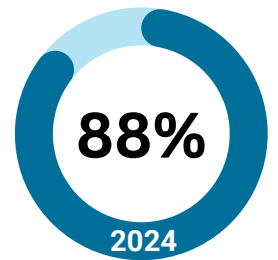
Past 6 month use of methamphetamine.



Of those who had recently used any form of methamphetamine, 90% reported weekly or more frequent use.

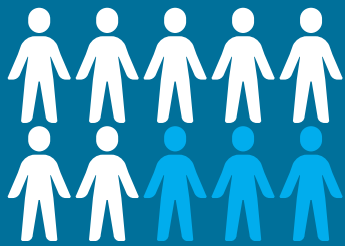
\$100
2024

The median reported price for a point of methamphetamine crystal.

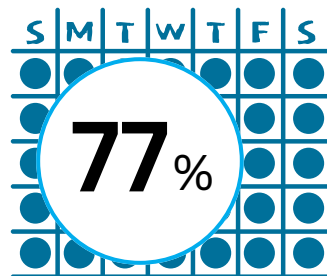


Percentage who perceived methamphetamine crystal as being 'easy' or 'very easy' to obtain.

CANNABIS AND/OR CANNABINOID-RELATED PRODUCTS



69% of the sample reported past 6 month use of non-prescribed cannabis and/or cannabinoid-related products.



Of those who had recently used non-prescribed cannabis/cannabinoid-related products, 77% reported daily use.



Of participants who had consumed non-prescribed cannabis and/or cannabinoid-related products in the last 6 months, 98% had smoked it.



Percentage who perceived hydroponic cannabis as being 'easy' or 'very easy' to obtain.

PAST 6 MONTH USE OF OTHER DRUGS

Heroin



Non-prescribed fentanyl



Non-prescribed pregabalin



GHB/GBL/1,4-BD

