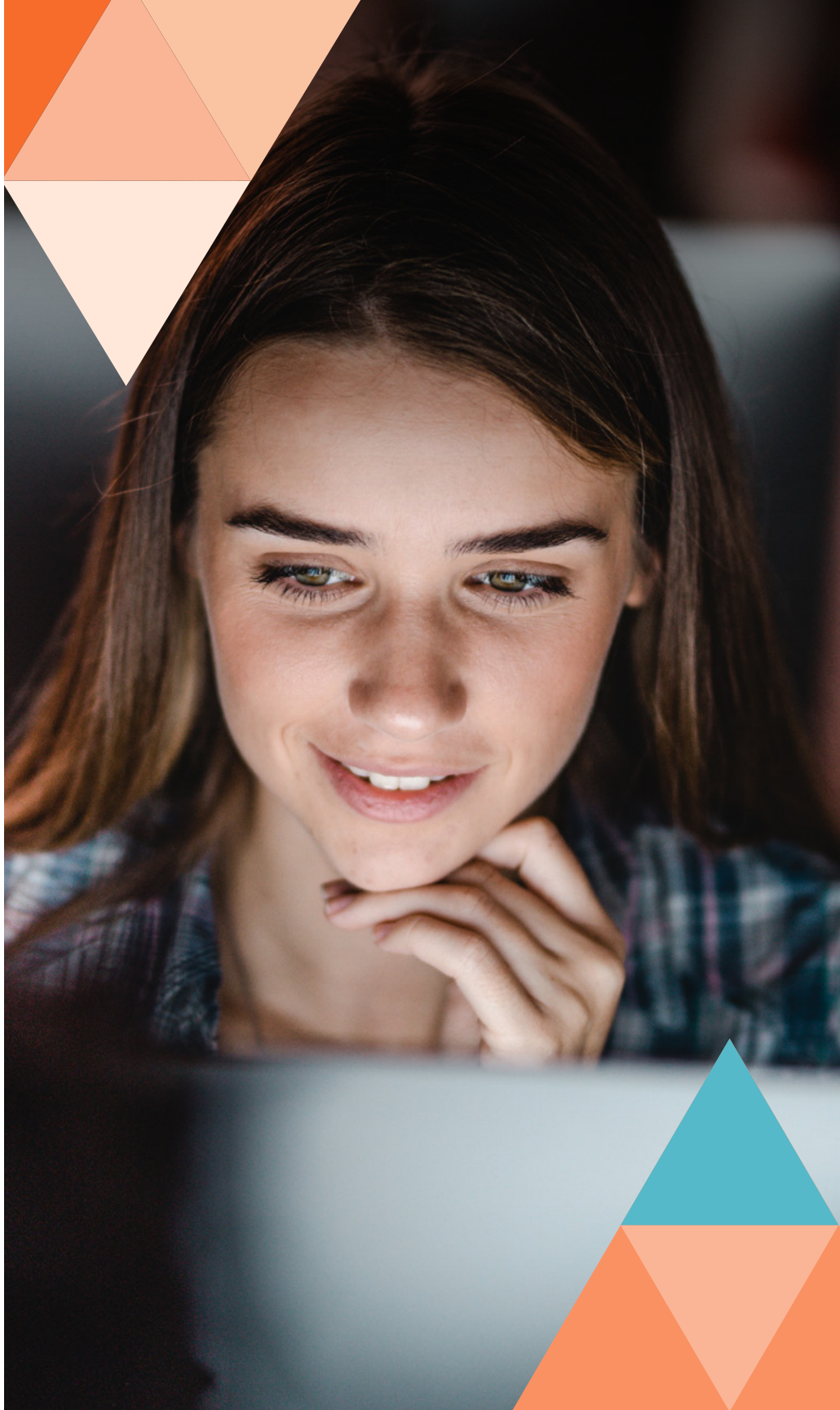


Master of Teaching (Primary)



UNSW Arts & Social Sciences
arts.unsw.edu.au





Master of Teaching (Primary)

- You will be eligible to teach after 1.3 years of study
- You will gain practical experience by working in a local primary school
- Commonwealth supported places are available for eligible students

What is it?

The Master of Teaching (Primary) is an innovative site-based postgraduate initial teacher education program developed in partnership with the NSW Department of Education and local primary school networks. The program is accredited by the NSW Education Standards Authority (NESA), enabling graduates to teach kindergarten through to year 6 in government and non-government primary schools in all states of Australia and overseas.

The Master of Teaching (Primary) is a two-year equivalent accelerated primary teacher degree that can be completed in four terms full-time (1.3 years). The program has a fixed timetable and in order to complete the course in 1.3 year students will 'overload' by completing four courses each term instead of the usual three. Part-time study is also possible.

Why study with us?

Our Master of Teaching (Primary) program is the only degree of its kind in Australia. You will spend at least two days a week in a local primary school community with a very high degree of linguistic and cultural diversity. The majority of classes will be held in the local school community, with teachers from partner schools actively involved in co-teaching during the program.

We offer Commonwealth Supported Places (CSPs) to domestic students for this program.

Entry Requirements

If you wish to study the Master of Teaching (Primary), you must have completed a recognised undergraduate degree with a major in one of the six key learning areas below, consisting of at least eight units of undergraduate study with no more than two at first year and at least two at third year.

Key Learning Areas (KLA) include:

- English
- Mathematics
- Science and Technology
- Human Society and its Environment
- Creative Arts
- Personal Development, Health and Physical Education

Please note that upon completion of the Master of Teaching (Primary) you will be qualified to teach across the curriculum and will also have a specialisation in a KLA.

Are you ready to apply?

Before you apply make sure you have completed a self-assessment using the following steps and that you meet all the requirements:

Step 1:

You need to meet certain subject content requirements to be eligible for entry into the Master of Teaching (Primary). [Check the subject content requirements for each specialisation.](#)

Step 3:

Have you prepared your [personal statement](#)*?

When submitting your application you will also need to prepare a personal statement outlining why you would be suitable for primary teaching.

How to apply

Between June and mid-August you can apply online through UNSW without paying a fee: [Apply now](#).

After mid-August you will need to apply through [UAC](#).

*Please note that a personal statement is required for all applications, regardless of the application method.

If you have any questions, email the School of Education: education@unsw.edu.au

Additional requirements

By the first week of the program, you will need to have all of the below.

NB: The Work Integrated Learning (WIL) Team will be seeking this information prior to your first placement (INSTEP).

- [Working with Children Check](#)
- [Anaphylaxis training](#)
- [Child Protection Awareness Training](#)
- [COVID-19 Digital Vaccination Certificate](#)

* You can also choose to complete a CPR training course, as this will be required when you start teaching.

Get started on compliance early to avoid delays at the start of the program.

Before going on your final 9-week placement you will need to:

- Undertake the [Literacy and Numeracy Test for Initial Teacher Education](#) (LANTITE)

Plan your year

The Master of Teaching (Primary) program is unique in that it does not exactly follow the University calendar. To help you plan your year, including when you can take holidays, see the [2022 calendar](#), for an indication of when things could be scheduled for 2023.

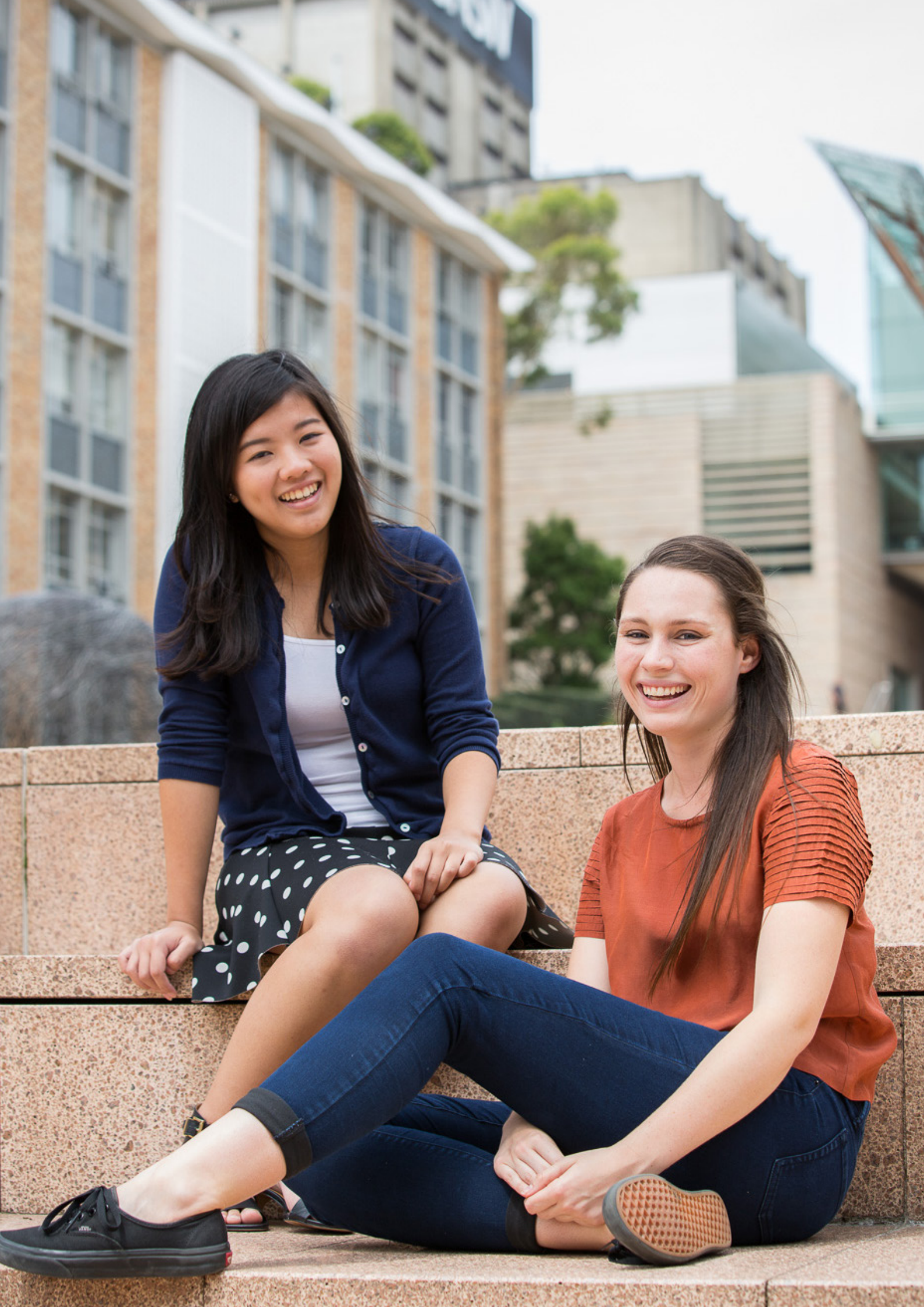


Step 1: Subject content requirements for each Key Learning Area (KLA)

Key learning areas

Areas of specialisation

English	English with a strong core component of study of English literature, communications, creative writing, language studies (English), linguistics, literature studies, media studies (i.e., the theoretical study of media or where the product is a literary text).
Mathematics	Pure or applied mathematics, other studies of mathematics that are relevant to the central concepts, modes of enquiry and structure of the content/discipline(s).
Science and technology	Agriculture, architecture, biology, bio-technology, chemistry, computing studies, design - interior, industrial, graphics, fashion, product, landscape (2 units only), design and technology, engineering, geology, earth and/or environmental science, materials science, medicine, nursing, physics, psychology.
Human society and its environment	Aboriginal studies/languages, anthropology, archaeology, Asia or Pacific studies, economics/business studies, cultural studies/ sociology, geography/environmental studies, government and citizenship, history, legal studies, political science, studies of religion.
Creative arts	Dance including practical experience in choreography and performance in several dance styles and dance history/theory, drama including experiential involvement in making and performing drama, music including performing (singing, playing and moving), listening and organising sound (composing) within a wide range of repertoire, visual arts including art making and art history/theory.
Personal development, health and physical education	Physical education, family studies, sports science, health studies, human movement, nutrition



Step 2: Personal Statement

When submitting your application you will also need to prepare a personal statement outlining why you will be suitable for primary teaching. Your statement should be no more than 150 words and include your reasons for wanting to be a teacher and why you are well suited for that role.

A personal statement is required for all applications, regardless of whether you apply to UNSW directly or via UAC.



FAQS

What does ‘accelerated program’ mean?

If you complete the program full-time, you will be fitting in 2 years’ (6 terms) worth of study into 1.3 years (4 terms). To do this, you will have an ‘overloaded’ program (complete up to 4 courses per term instead of 3). This makes it a very intense program and it is therefore recommended that you do not have any work commitments during this time.

Check out the 2022 full-time program plan on pg1 (2023 program plans will be available towards the end of 2022).

If you have large commitments that you cannot avoid, you may want to consider completing the program part-time over 2.3 years (7 terms).

Please note that you can always drop down to part-time if you find the workload too much, however you cannot jump from part-time to full-time due to the structure of the program.

Can I study this program part-time?

Yes, but you need to follow a specific plan of study as outlined by UNSW School of Education.

Check out the part-time program on pg 2.

What are the English language proficiency requirements?

A very high level of competence in spoken and written English is required to participate in this program. Find out more about the **English language requirements**.

All applicants (domestic and international students) must meet the above criteria and submit evidence with their Master of Teaching (Primary) application. If you have undertaken prior study in the English language you still need to submit this evidence.

Before going on your final 9-week placement, you will need to undertake the **Literacy and Numeracy Test for Initial Teacher Education** (LANTITE). You can complete this prior to the program starting. Test windows can be found **here**.

Can I start mid-year?

No. Intake is only available in Term 1 each year to align with the school calendar year and pre-requisites.

Does my degree from overseas qualify me to study the Master of Teaching (Primary)?

It can, as long as you have met the **entry requirements**. Please note that you may be asked for additional information following your application to determine the equivalency of your courses to those of UNSW.

What is the personal statement that I must complete?

In addition to meeting the graduate and background studies requirements, you must submit a personal statement outlining your suitability for primary teaching. Your statement should be no more than 150 words and include your reasons for wanting to be a teacher and why you are well suited for that role.

Am I eligible for a commonwealth supported place?

Commonwealth supported places (CSPs) are offered in the Master of Teaching (Primary).

To get a CSP, you must be:

- an Australian citizen, who will live and study in Australia for some of the course; or
- a New Zealand citizen, who will live and study in Australia for the whole course; or
- a permanent visa holder, who will live and study in Australia for the whole course

What subjects do I choose?

Please refer to the Master of Teaching (Primary) **program plan** for the courses you will need to choose each term.

What is the In School Teacher Education Program (INSTEP)?

Your professional journey to becoming a graduate teacher is enriched through the dynamic interaction of practice and theory through site-based experiences during your degree program. The journey begins with your In-School Teacher Education Program (INSTEP) that commences in the first few weeks of term one. During the first year of your program, you will spend a minimum of 20 days in primary schools for practical INSTEP experiences.

Contact us

UNSW Future Students Office

Degree and admission advice

Ask a question unsw.edu.au/ask

1300 UNI NSW (1300 864 679)

futurestudents.unsw.edu.au