

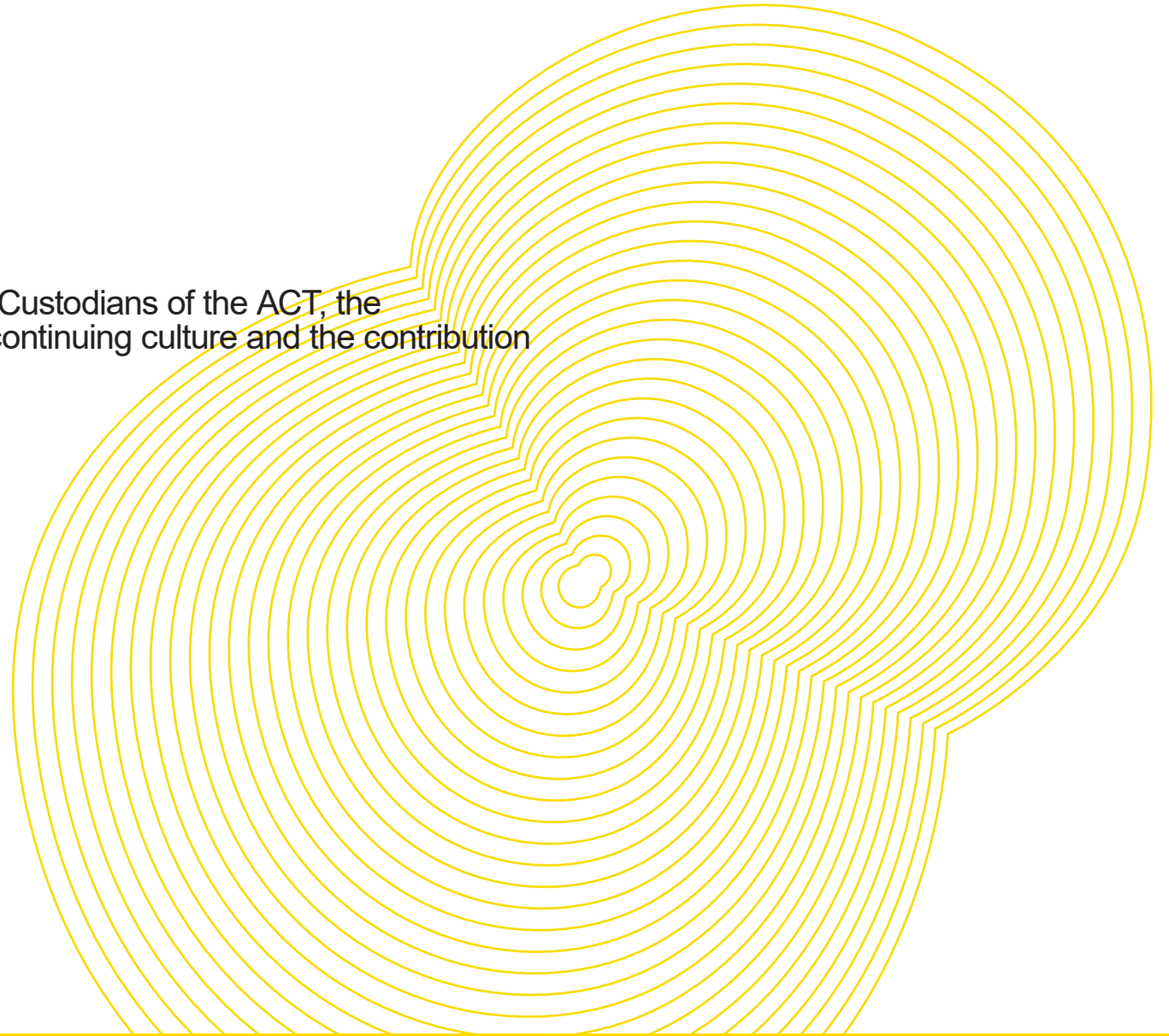
UNSW Canberra City

Draft Master Plan



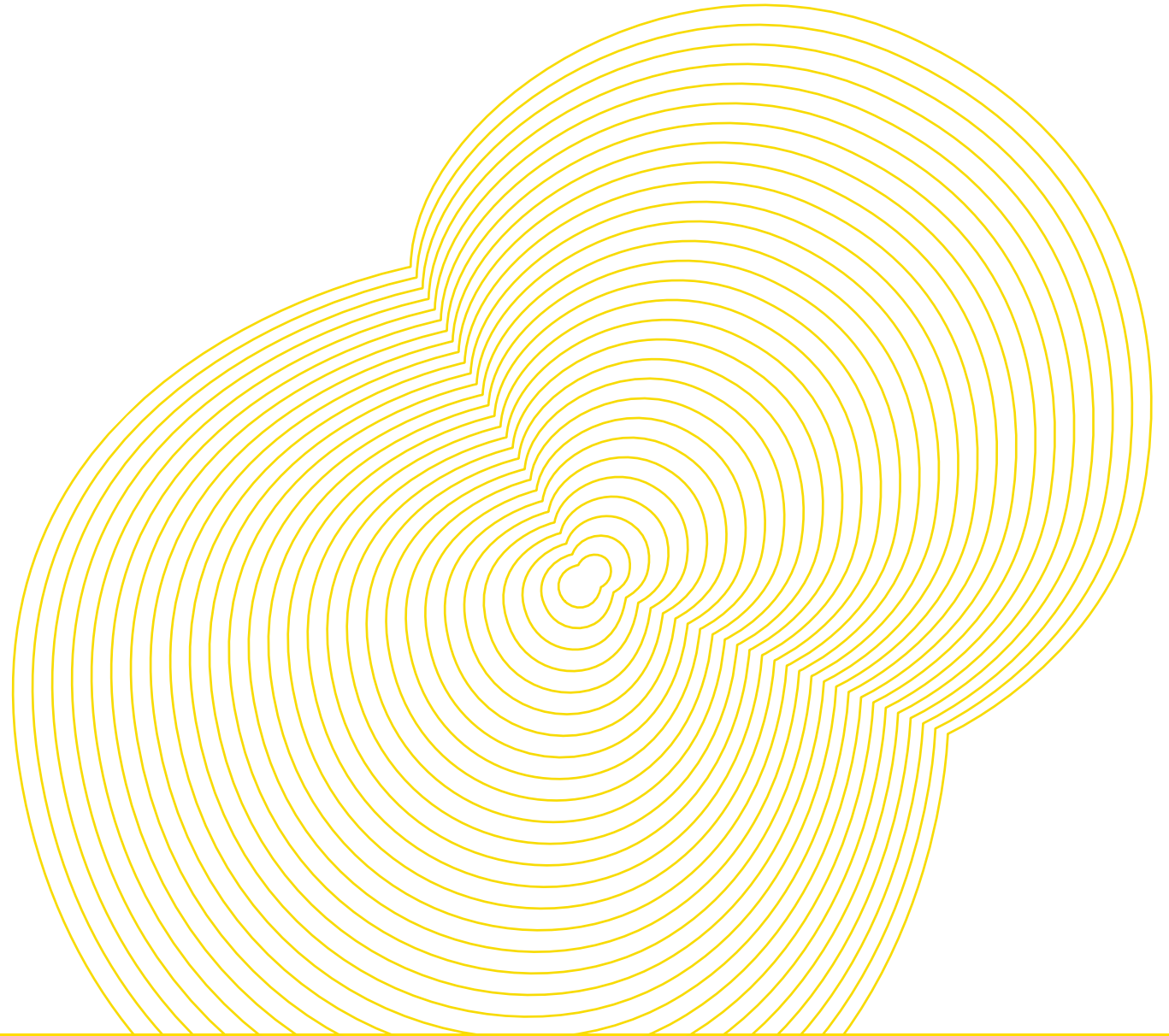
Acknowledgement of Country

UNSW Canberra wishes to acknowledge the Traditional Custodians of the ACT, the Ngunnawal People. We acknowledge and respect their continuing culture and the contribution they make to the life of this city and this region.



Contents

1. Overview
2. Vision and Principles
3. Master Plan
4. Strategies
5. Precincts
6. Staging and Implementation
7. Next Steps



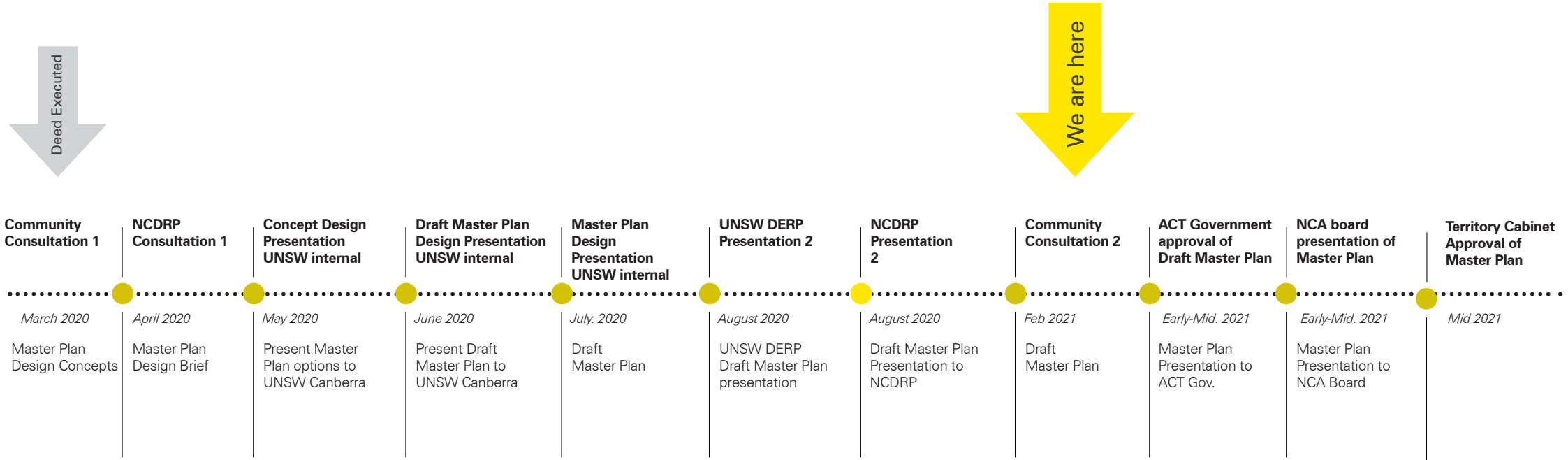
Overview

1

1

Overview

Following the execution of the Precinct Deed in March 2020 the development of the Master Plan for UNSW Canberra City has evolved through regular internal and external design reviews and incorporating technical advice from sub-consultants. This is the second phase of community consultation.



NCDRP – National Capital Design Review Panel
 UNSW DERP – UNSW Design Excellence Review Panel
 NCA – National Capital Authority

1

Overview

UNSW Canberra City Mission

- To align with UNSW's strategic priorities.
- To build on UNSW Canberra's research and educational offerings for undergraduate, postgraduate and professional education.
- To build on the ACT's reputation for tertiary excellence and strengthen the Government's ambition for Canberra to be the Knowledge Capital.
- An innovation precinct expanding on UNSW Canberra's strengths in defence and security innovation.
- To develop an urban integrated education precinct with a commercial, industry and community focus rejuvenating the eastern city fringe.

UNSW Canberra City Vision

Establish a teaching, research and innovation environment in Canberra that is aligned to UNSW's commitment of becoming Australia's global university.

UNSW has been proudly partnering with Defence in Canberra for more than fifty years. UNSW's second Canberra campus will build on UNSW Canberra's achievements, by creating a world class environment within the parliamentary triangle. The new campus enables UNSW's strategic priorities of academic excellence, social engagement and global impact to thrive.

The campus environment will provide a sense of place and pride in UNSW. Students, staff, alumni, members of the local community, and partners from the defence and security community located adjacent to the campus, will come together to innovate, transform, learn and contribute to society.

A Master Plan will identify the campus development and provide UNSW the opportunity to shape the optimum development path.

1

Overview

The UNSW Canberra City Master Plan will provide a robust foundation to guide built form and open space development for UNSW's new campus vision. The Master Plan is designed to support a contemporary education pedagogy, along with research and innovation, collaboration and knowledge exchange. Located at the centre of Canberra's defence and innovation corridor, UNSW Canberra City will enhance Canberra's innovation corridor links with science, technology, defence, industry and government.

CSIRO

ANU

UC

CBD

UNSW
CANBERRA

CIT

LAUNCH
ON
NORTHBOURNE

DEFENCE
SECURITY
HQ

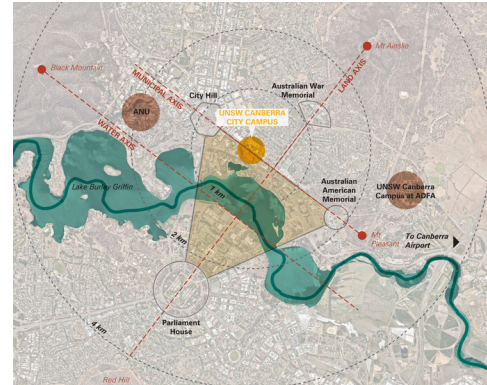
1

Overview

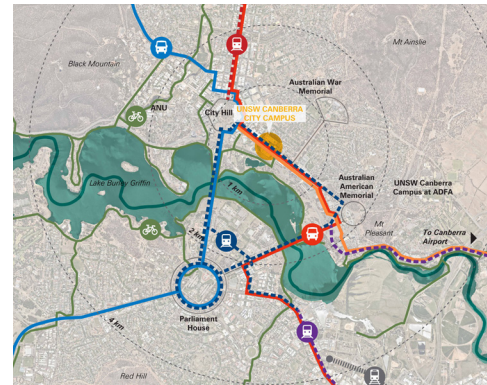
Context

- UNSW Canberra City will be located in a strategically significant site on Constitution Avenue, east of Canberra city centre.
- The site presents an opportunity to create and enhance connections with the landscape, open space, transport and movement networks.
- The site interfaces with a variety of urban and landscape conditions within its immediate context.
- The topography of the site includes a fall to the west of the site, creating opportunity for views to key built form and landscape landmarks.

City

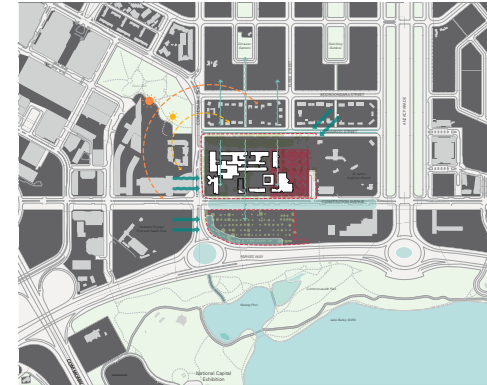


The National(Parliamentary) Triangle

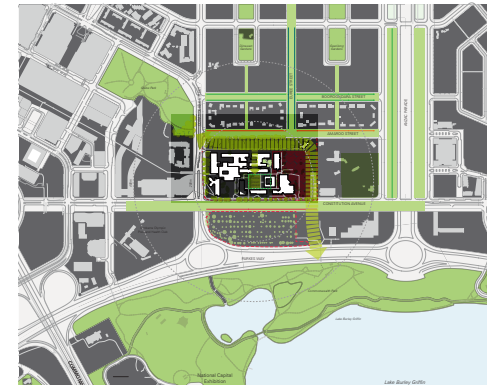


Transport and Movement

Civic



Canberra Civic



Landscape and Water

Neighbourhood



Location and interfaces



Topography

1

Overview

An urban campus for Canberra

UNSW Canberra City will be an urban campus, one that is connected to the city context and expands the local open space and cultural network through new places, spaces and events. It will be a key destination for research, teaching and training.



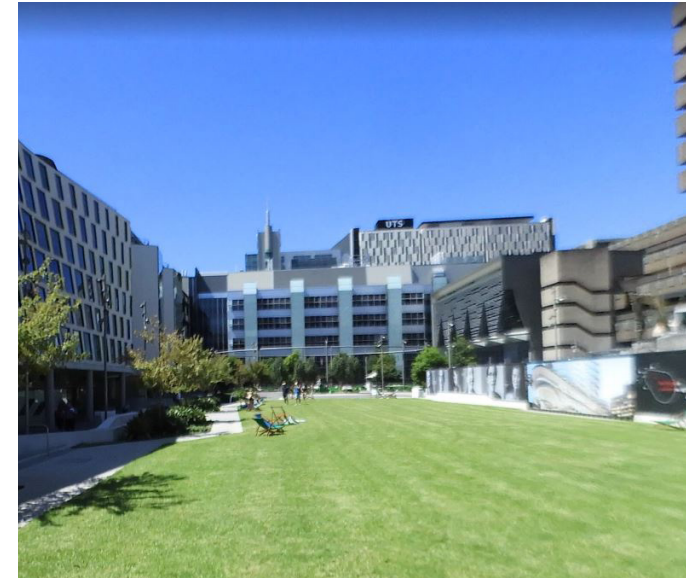
Duke University - West Campus Student Commons - North Carolina



Monterrey Tech - Mexico City



QUT Garden Point Campus - Brisbane



UTS Alumni Green - Sydney

Vision and Principles

2

Vision and Principles

*The UNSW Canberra City campus will be a **world class learning and research destination** within Canberra's city centre. The campus will celebrate its **global connections** while creating a **unifying urban gesture with Griffin's Canberra Plan**, its location within the **National Triangle** and its contribution to Canberra's **innovation and knowledge corridor**.*

*As an urban campus, UNSW Canberra City will **showcase collaborative University life and partnerships** to the city through a range of buildings and spaces for academic, research, cultural and student focused events and activities. The UNSW Canberra campus will be **pedestrian focused**, enabling **campus collaboration, flexible learning and teaching** and creating a **safe and welcoming place** for the residential students to **live, socialise and connect with nature**.*

*A strong sense of arrival will be achieved through a reimagination of the UNSW interface with Constitution Avenue and Coranderrk Street, with campus gateways and pedestrian walks inviting movement into and through the campus, connecting to **high-quality academic and research buildings** and **vibrant open spaces and landscapes**. Climate-resilient and sustainable principles will underpin all built form and landscape elements ensuring a **comfortable campus throughout the seasons**.*

*Developed over stages, the UNSW Canberra City campus will support long-term travel mode shift through future transport upgrades, on-campus cycle infrastructure while meeting requirements for campus car parking, servicing and loading. Each stage will deliver key components including academic, student residential, parking and campus open space to ensure a **sense of completeness at each stage** supporting a **rich student, academic and visitor experience** over time.*

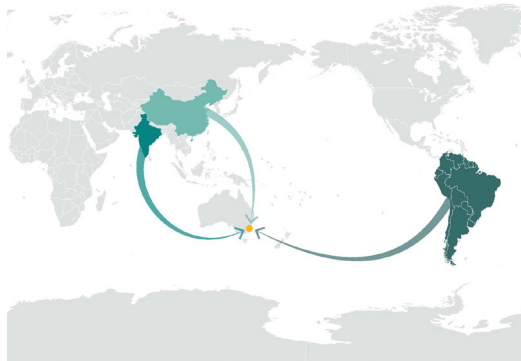
2

Vision and Principles

Vision ambitions

Home of education and innovation

Located in Australia's capital, UNSW offers a unique Campus experience on a globally connected Campus.



At home in the world



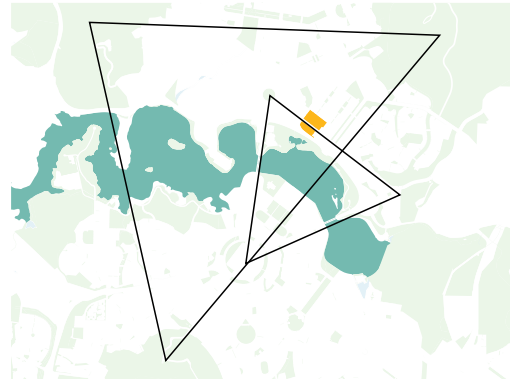
Authentic connections



Local, global

Embedded in a context

A Campus with a sense of place, connected to the city structure, the landscape and Parliamentary Triangle.



Vistas and scale



Connection to landscape



Contributing to the civic realm

Unifying urban gesture

Located at intersecting urban geometries, the Campus will unify places, spaces, histories and networks.



Unifying geometry



Interfaces and neighbourhoods



Garden City elements

Seasons and landscape

A network of learning landscapes that connect with the place, the seasons and the amenity needs of users.



Seasonality



Safe and activated



Complexity and vibrancy

The Master Plan is framed by four key ambitions, which act as overarching ambitions and categories and form a structure for Master Plan design directions.

Vision and Principles

Design Principles

Design principles provide high level design advice regarding future development on the Campus, underpinning the Master Plan vision.

*A **lively** learning and innovation precinct which enhances the broader neighbourhood*



Showcase UNSW to the city

- Showcase University activity to the City along the Coranderrk Street interface through design that reveals key elements of Student, academic and research life on Campus.
- Create a clear gateway at the Coranderrk Street and Constitution Avenue intersection marking the entry to the UNSW precinct.
- Minimise residential program along Parkes Way, prioritising programs which will showcase UNSW.
- Encourage innovative design that responds to high profile gateway sites and the UNSW vision.



Enliven Constitution Avenue

- Create a permeable and lively ground plane and interface along Constitution Avenue celebrating student and partnership life and civic engagement.
- Showcase the activities of the University along Constitution Avenue through curated street engagement, access and design.
- Invite the community into the Campus through welcoming programs, clear arrival points and accessible entries.



Create a gentle interface to the heritage railway parklands

- Minimise impact of built form to the Easement.
- Encourage movement along the Easement rather than across it.
- Reinforce the easement as a quiet and reflective space.
- Draw the landscape into the Campus through green 'fingers' between buildings.
- Plan built form and open space along the Easement interface to minimise noise and overlooking across Amaroo Street.



Develop a pedestrian precinct

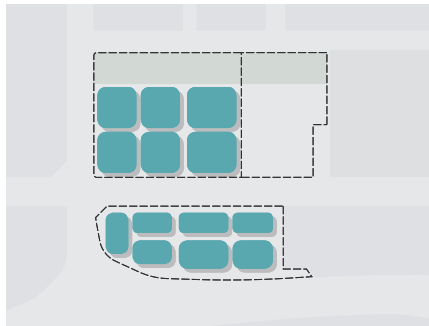
- Create a pedestrian focused Campus.
- Manage vehicle flows and movement to Campus edges and basement zones and prioritise pedestrian and cyclists networks at ground levels.
- Minimise traffic impact on surrounding streets.

2

Vision and Principles

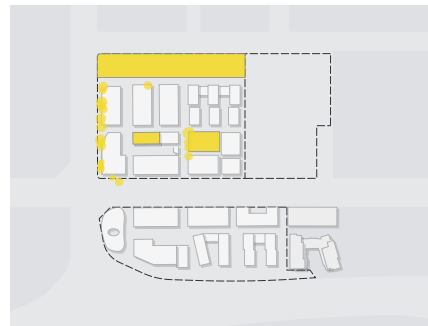
Design Principles

*A **complete** Campus which allows for flexibility and variety while ensuring a cohesive sense of place*



Delineate development zones

- Divide the site into developable lots which allow for flexibility in Campus phasing and delivery.



Reuse existing Campus assets

- Reuse existing buildings in the early stages of the project to create a complete Campus at every stage.
- Ensure the reuse of existing buildings doesn't impact on the realisation of the project vision.
- Retain Campus green and existing trees where possible.



Deliver high quality public spaces with each stage

- Create clear, high quality walks and public spaces as a priority, to create a strong public presence.
- Prioritise development along the Constitution Avenue municipal spine to create a lively civic streetscape.
- Retain existing buildings which contribute to the public realm experience in the short to medium term.



Reduce the impact of parking and loading optimising efficient use of the ground plane

- Minimise the development of basement car parks in the early stages by using available on-grade land for parking.
- Separate vehicles and pedestrians throughout the staging process.
- Locate loading access at the edges of the Campus.

2

Vision and Principles

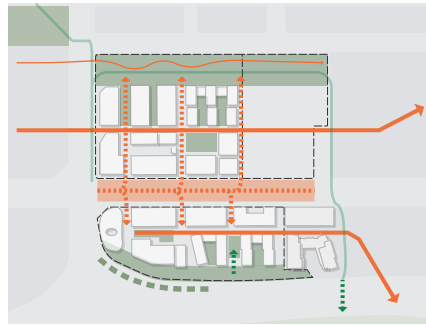
Design Principles

A unifying gesture connected to its context



Connect to context

- Connect the City Centre to St John's
- Respond to the angled geometry of St John's alignment
- Celebrate the academic and social life of the Campus along Constitution Avenue.
- Protect and enhance the landscape values of the Heritage Easement.
- Create high quality pedestrian walks and gateways into and through the Campus that deliver a rich UNSW experience.
- Reflect the organic geometry of Commonwealth Park at the southern interface.



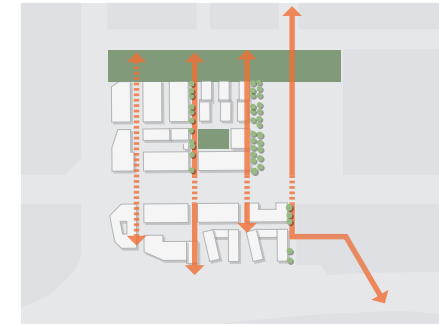
Create a hierarchy of open spaces linking to adjoining open space networks

- Enhance the existing Reid Commons as a high quality and vibrant Campus 'heart'.
- Curate access and interventions into the Heritage Easement parkland with light-touch design interventions.
- Develop the spaces as bespoke responses to the unique attributes of their context and interfaces.
- Embed learning spaces throughout the Campus that are technology rich and nurture a strong collaborative and learning culture.



Create bespoke arrival experiences and a Campus with a sense of place

- Create primary Campus gateways that indicate main arrival points onto the Campus.
- Allow for safe and generous UNSW arrival plaza linked to public transport centrally located to both sites.
- Ensure secondary Campus entry points are welcoming at all times.
- Create opportunity for spaces that connect to indigenous heritage.



Develop north-south walks connecting the campus and key spaces and places

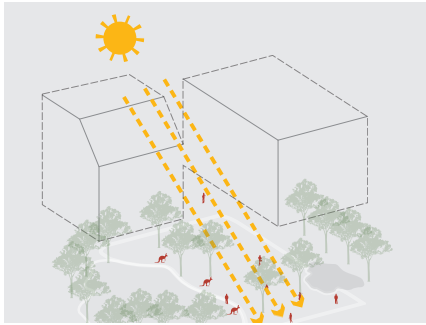
- Create a north south pedestrian walk linking both sites.
- Use landscaping and trees to reinforce north-south movement and access.

2

Vision and Principles

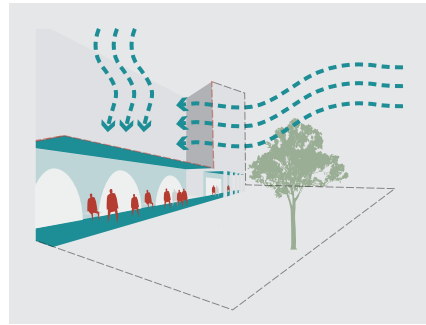
Design Principles

A Campus which is comfortable throughout the seasons



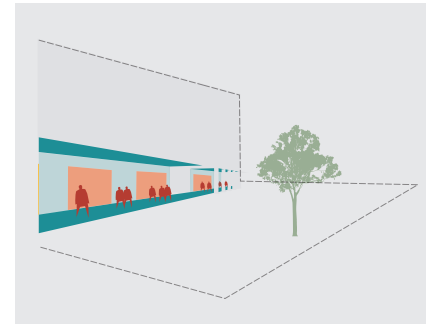
Maximise solar access to public open space

- Orient built form to allow for maximum solar access and amenity to public open spaces
- Step and shape built form, where possible, to increase solar access to the site.
- Maximise permeable landscapes to mitigate the impact of urban heat island effect.
- Provide landscape interventions and shade to key places and spaces.



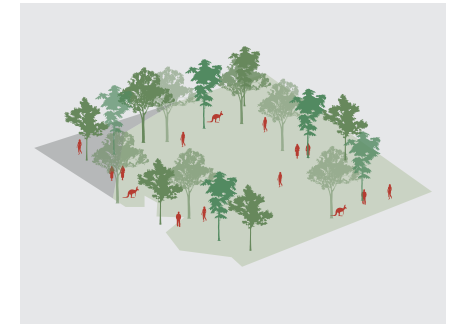
Ensure built form mitigates wind impacts

- Shape built form to minimise the impact of wind on public open spaces and principle pedestrian walks.
- Use awnings, canopies and landscapes to mitigate wind speeds and enhance environmental comfort.
- Engage a wind consultant to provide a high-level assessment and assist with the development of design guidelines through each development phase.



Provide flexible weather protection supporting outside protection and amenity

- Incorporate atria, loggias, under-crofts and awnings into built form for weather protection and to enable a comfortable environment for collaboration, socialization and movement around the Campus.



Reflect seasonality through landscapes and choice of open spaces

- Select flora which celebrated seasonal change.
- Ensure outdoor spaces can be used throughout the year to support student life, collaboration and enjoyment of the Campus setting..

2

Vision and Principles

Sustainability



Become a Campus that is ready for the future

Design for resilience, adaptability and flexibility to ensure the campus can adapt to changing uses and demands.



Become a carbon positive Campus

Promote renewable energy usage and generation to achieve net zero emission and aspire to be fossil fuel free campus through application of the emissions reduction hierarchy.



Become a water positive Campus

Reduce the water usage to reflect high value of water in the campus' physical context. Potable water usage should be reduced across campus to acknowledge the high intrinsic value of drinking water. Water Sensitive Urban Design (WSUD) principles will be applied throughout the campus.



Apply a circular economy approach

Become a zero waste campus through the application of Circular Economy principles. Consider embodied energy during the material selection for campus open space and buildings and prioritise low carbon footprint building materials.



Create a healthy Campus community

Promote healthy lifestyle through campus design in order to contribute to positive health outcomes among the community. Provide an inclusive, conformance and accessible campus environment that integrates with its context.

2

Vision and Principles

Gateways and Interfaces

The Campus will have complementary, but differing, interface responses to the City, Constitution Avenue, residential neighbourhoods and landscape edges that provide clear and welcoming gateways and entries to the campus and buildings.

Heritage Interface

Quietly activated and celebrated, connected to the Campus via 'fingers of green' landscapes and walks.



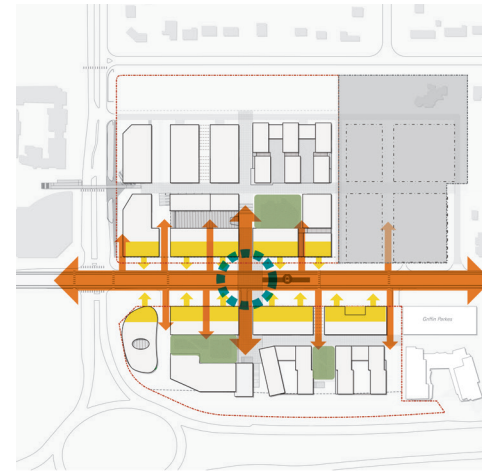
Parkes Way Interface

A gently landscaped edge that manages water flows and creates new connections to regional open space.



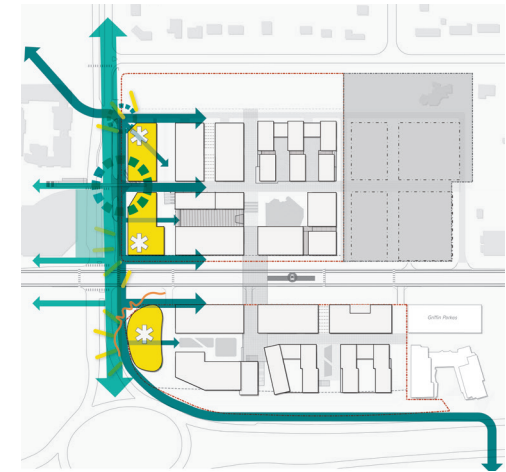
Constitution Avenue Interface

A high-quality civic space, well defined by robust university architecture and supporting diverse activities and extended hours use.



Corranderrk Interface

Connecting and showcasing to the city through ground floor activation and upper levels transparency.



Master Plan

3

3

Master Plan**Built Form*****The built form of UNSW Canberra City campus will:***

- 1** Create a world class urban campus comprised of an ensemble of buildings, each diverse in program, ambition and character but connected to a shared campus vision and place response.
- 2** Ensure buildings are conceived to celebrate the student and locational experience and pedagogical and programmatic ambitions of UNSW Canberra to create a deeply collaborative and dynamic campus environment.
- 3** Develop complementary but differing interface responses to the City, Constitution Avenue, National Parliamentary Triangle and residential neighbourhoods that engage with these edges and provide clear and welcoming gateways and entries to the campus and buildings.
- 4** Encourage the integration of street and landscape elements with built form and place through a network of complimentary courtyards and places, integrating landscaped streets, roof terraces, vertical gardens and other forms of green infrastructure.
- 5** Ensure built forms engage with adjoining buildings, shared spaces and streets and leverage and frame key views and showcase social, learning, hospitality, research and student services to these networks.
- 6** Ensure the design of buildings create complimentary transitional spaces of high environmental amenity to leverage use and enjoyment of outside spaces.
- 7** Connect campus spaces and buildings to key internal and external views, creating a sense of place and campus activation.
Ensure all buildings achieve architectural and urban design excellence.
- 8** Develop an ambitious campus-wide Environmental Sustainability targets, delivery and reporting strategy built around a Zero Carbon Future, and Green Star Campus framework tailored to the specific locational attributes of Canberra and aligned with the broader institutional ESD impact areas of UNSW.
- 9** Ensure buildings are designed to CPTED standards that optimise onsite safety and engagement of buildings at all levels appropriately with adjoining spaces and streets.
- 10** Ensure that each phase of development stitches the campus into the surrounding neighbourhoods and completes that engagement with streets and neighbours.
- 11** Ensure that Built form responses consider views to the building external to and within the campus.
- 12** Ensure that roof plant is integrated into the conceptual design of the building.
- 13** Ensure the built form is invested with materials and detailing quality commensurate with its location within the National Triangle.
- 14** Consider the flexibility, adaptability and innovative use of technology in the execution of new development.

Master Plan Built Form

A campus structure that connects to Canberra's Griffin Plan and the site's educational history through pedestrian walks and a series of new and retained and enhanced open spaces, and built form.

A new knowledge and innovation precinct at the gateway to Civic, programmed and positioned to deliver a world-class collaborative urban university experience and invested with a design character and quality suitable for this significant civic boulevard location.

Distinctive precincts that respond to unique interfaces through built form orientation, designing around views, sunlight access and landscape connections.

A living campus with distinctive student residential villages on each campus with complimentary shared spaces to for socialising and recreation, informal study and learning and student support services.

Signature buildings and collaborations that define the Coranderrk and Constitution interfaces and opportunities to showcase and celebrate university partnerships to the city.

Campus hearts that connect to mixed use buildings and spaces, activated and attractive spaces for the student experience.

Connecting to views of Canberra's landmarks and creating a sense of place within the National Triangle.



3

Master Plan

Ground Plane

The ground plane of UNSW Canberra City Campus will:

- 1** Create framework for the campus of high quality, activated pedestrian walks and distinct campus arrival and entry points that connect to and through the campus to key Civic, lake and neighbourhood destinations.
- 2** Ensure building entries are located along all pedestrian walks to key student and university facilities.
- 3** Optimise the success of shared use facilities by locating them at street interfaces where they are easily accessible by the broader public staff, students and university partners.
- 4** Maintain high levels of accessibility throughout the campus and along all interfaces.
- 5** Create a complimentary ensemble of open spaces that support student life and the academic, partnership and research ambitions of UNSW Canberra and are underpinned by excellence in landscape and urban design and response to Climate Change and best practice Urban Forest principles.
- 6** Respond and mitigate negative seasonal climate impacts through appropriate building and programming orientation, transition, weather protection, vegetation, shading and open space orientation.
- 7** Create a campus 'heart' and memorable spaces in each precinct that will foster the social and cultural student experience on the Reid and Parkes sites through adaptable, complementary and high quality open spaces.
- 8** Use site level transitions to enhance wayfinding and legibility, engagement with views and landscapes, and amplification of the contribution of shared spaces and landscapes.

3

Master Plan Ground Plane

Constitution Avenue gateways create a sense of arrival to the Campus, connected north and south across Constitution Plaza and defined by distinct built form.

Coranderrk will become an activated frontage with a shared path, new landscape areas and Campus building entries connecting to the pedestrian bridge via an arrival plaza.

A permeable and accessible ground plane will prioritise safe and easy pedestrian movement, supporting collaboration and exchange between research and teaching, and connecting students and staff to social and green spaces.

The high quality pedestrian walks, designed with landscaping and lighting will encourage use throughout out extended hours, and providing the logical link between all precincts across the UNSW campus and adjoining areas.

Heritage Railway Easement will be celebrated as a quietly activated space promoting movement along and under the extraordinary natural arbour and respecting its valued landscape qualities.

The Parkes Way interface will create a new activated frontage connecting to the Parkes Way underpass with WSUD landscaping to support informal active and passive recreation.



3

Vision and Principles

Landscape - Master Plan

Integrated new and existing open spaces will include the Heritage Railway Easement, new pedestrian walks, campus greens, roof terraces, and an expanded public realm at the interfaces with Constitution Avenue, Coranderrk Street and Parkes Way.

Reid Commons and Parkes Green will be the focus of campus and student life promoting interaction, events and enabling a rich student experience.

Landscaping and green infrastructure will be underpinned by WSUD principles and designed with appropriate species to provide shade and shelter from climate, reflect the seasons and create a variety of spaces to enjoy.

Student residential villages incorporate generous open spaces both at the ground level and upper levels providing choice and supporting different uses.

The Heritage Railway Easement and Parkes Way interface act as green 'bookends', creating a visual buffer and guiding movement along each.

Landscapes designed as 'fingers of green' will extend into the campus between buildings creating places for sitting, collaborating and connecting to nature



Strategies

4

4

Strategies

The strategies articulate how the campus will be organised and structured and the intentions for specific outcomes such as the location of open space, potential development envelopes for Campus buildings and the character of streets and pedestrian walks. The strategies are also a response to targets, background technical or context information, as well as the intention of the planning codes and guidelines the site is subject to.

Program and uses

Academic:

- The location of the academic buildings along Constitution Avenue and to the west of the campus addresses key interface conditions, the proximity of the city centre to the west and the high profile gateway sites at the corners of Coranderrk Street.
- Academic buildings define the streetscape interface on both sides of Constitution Avenue.
- All landmark buildings are academic buildings.

Residential:

- Residential buildings are consolidated in to two 'villages' which interface the northern and southern landscape conditions.
- A mixed use building, including student accommodation, residential teaching and ancillary uses faces on to Constitution Avenue.
- All residential buildings incorporate ground level academic spaces (for either primary or associated uses).

Associated use areas:

- Dedicated building for spaces that support the student experience such as retail, student services spaces, exhibition or event spaces.



Legend:

 Academic	 Residential
 Residential Teaching Facility	 Student accommodation
 Informal teaching spaces	 Outdoor informal learning
 Workshop spaces (near loading entry)	 Indoor gathering space (engagement)
 ACT retained land	 Belvedere (Indoor celebration space)
	 Gateway building
	 Campus heart
	 Primary open green spaces

4

Strategies

Campus life

- Create a campus that supports the student experience through a rich and diverse built form and landscapes. Create spaces and places within the campus that will attract and retain partnerships, collaborators, and short and long term events that celebrate UNSW's and Canberra's research and knowledge, cultural and social values.
- Create a primary public open space and campus heart on each site, supported by a perimeter of active, student orientated programmes, that foster informal learning and teaching, support student engagement and encourage socialisation and gathering.
- Create dedicated spaces throughout the campus, such as the Belvedere on the Parkes site, which provide opportunities for industry collaboration, hosting UNSW industry events and enabling partner interaction.
- Create opportunities for engagement with the broader Canberra community, through spaces which are able to host local events, and provide for direct engagement between UNSW and community organisations.
- Create a central retail and hospitality hub supported by programme that supports the student experience along primary walks and ground floor interfaces
- Key interfaces along the primary walk network activated by retail, hospitality, student services, exhibition and events.
- Ensure that ground floors provide opportunities for informal learning and collaboration through the provision of weather protected, accessible and transparent spaces and programmes which support a lively student focussed precinct.



Legend:

- | | |
|--|---|
| Campus heart | Outdoor informal study |
| Plaza | Indoor covered open space (Marketplace) |
| Retail | Partnerships / community engagement (indoors) |
| Residential amenity (gym, workshop) | Significant outdoor green space |
| Indoor informal study | Campus green squares |
| Workshop teaching spaces (double height) | ACT retained land |

Extended hours activation

- The UNSW Canberra City campus will have extended hours use.
- It will be a safe and vibrant space to visit and spend time in during the evenings and on weekends.
- Key locations will support spaces with extended hours use such as exhibition and event spaces, café's and retail areas.
- Open spaces and pedestrian walks will be well lit providing a path with natural surveillance into and through the campus.



Legend:

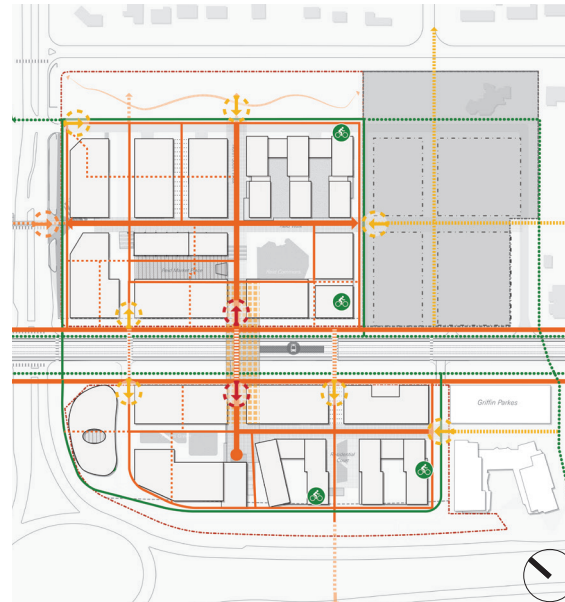
- | |
|-------------------------------|
| 24 hour student common spaces |
| After hours Campus use |
| Key event spaces |
| After hours key public spaces |
| Primary after hours gateway |
| Secondary after hours gateway |

4

Strategies

Active transport

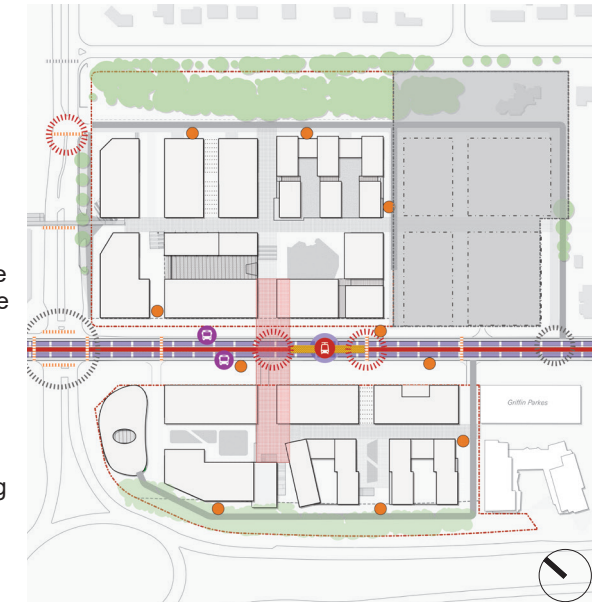
- UNSW will be a pedestrian prioritised university campus.
- Campus levels ensure high accessibility outcomes throughout both campuses.
- Proposed cycling routes along roadways adjacent to campus with cycling through campus along the service roads.
- End-of-trip facilities service academic and residential buildings.
- Proposed connections to the broader Canberra cycle network including to the Parkes Way underpass.
- Reid Walk: east-west orientation, connecting the western gateway and city centre through to the Reid Common and St Johns Church.
- North-South Walk: north-south orientation, primary pedestrian link connecting Reid and Parkes sites across Constitution Avenue.
- Parkes Walk: east-west orientation, central spine to Parkes campus, provides vehicle access through the site terminates at Parkes Green.



- | Legend | | | |
|--------|--|--|------------------------|
| | Primary pedestrian gateway | | Campus cycle network |
| | Primary pedestrian gateway (bridge) | | City cycle network |
| | Secondary pedestrian gateway | | Plaza |
| | Primary pedestrian network | | End of trip facilities |
| | Secondary pedestrian network | | Pedestrian crossing |
| | Through buildings | | ACT retained land |
| | Proposed pedestrian connection (not UNSW land) | | |

Public transport

- Advocate for a pedestrian-focused light rail alignment which will accommodate significant pedestrian movement north-south between each site.
- Provide locations for taxi or ride share services for drop-off and pick-up. Ensure these areas are designed to CPTED principles.
- Actively promote public transport, taxis, ride-share or shuttles as the preferred mode of accessing the Campus.
- The ACT Government's proposed extension of the light rail system will improve the connection between the ACT's key knowledge anchors: linking UNSW with UC, CIT, ANU, Civic and the airport.
- Reinforce UNSW's role as a key destination along the proposed University Line.
- Advocate for a high quality public transport 'super-stop' which incorporates future light rail arrival or consolidates bus routes into a singular arrival location. Incorporate sheltered, comfortable and well-lit public transport waiting areas that are equipped with best practice communication standards for example, real-time travel information.
- Explore the potential of creating a dedicated UNSW bus shuttle loop between neighbours, ADFA, Civic and the new UNSW Canberra City campus. The introduction of a shuttle loop (whether a bus or automated vehicle), will help in achieving a mode share shift away from private vehicles and towards active and public transport modes.



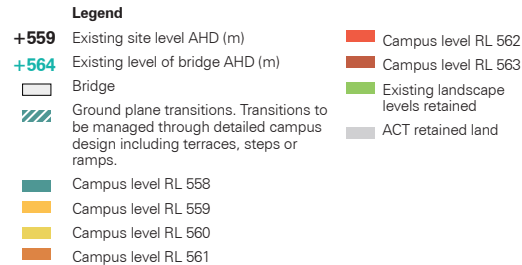
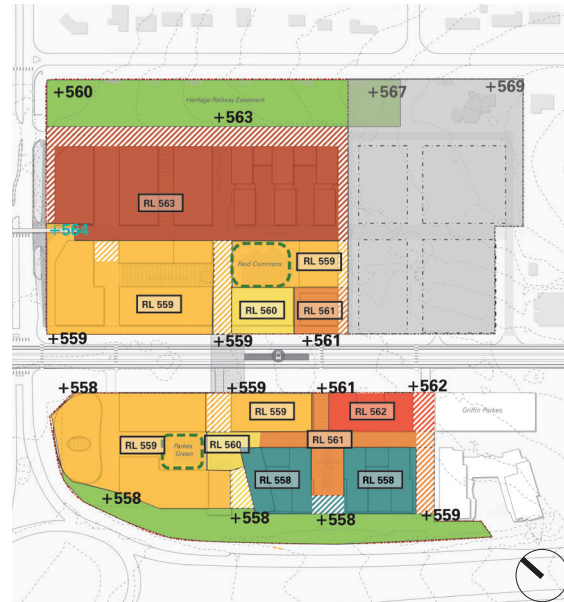
- | Legend | |
|--------|------------------------------------|
| | Tram / Bus super stop (proposed) |
| | Tram line (proposed) |
| | Rapid transit bus route (existing) |
| | Existing bus stop |
| | Drop-off zone |
| | Signalised intersection (proposed) |
| | Signalised intersection (existing) |
| | ACT retained land |

4

Strategies

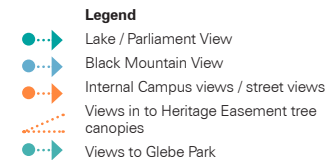
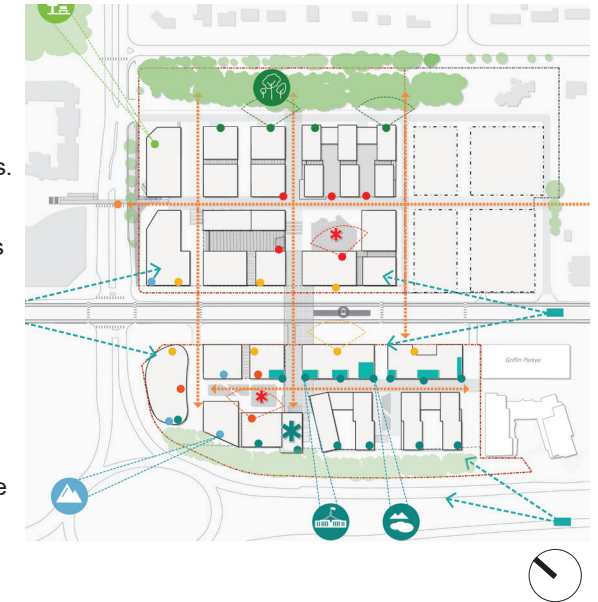
Topography and levels

- Where possible on grade existing levels have been adapted to minimise on site cut and fill.
- Campus site levels and ground floor levels ensure maximum flexibility between building access and entries, and inter-building connections at upper levels.
- Reid Walk level allows direct mezzanine entry into Lower Reid buildings.
- Campus levels provide flexibility for either below grade or podium car parking. Basement car parking can be connected at lower levels.
- Buildings will provide internal level transitions through lifts, escalators and stairs.



Views and sightlines

- The orientation and massing of the campus built form ensures that key views are visible from multiple levels of many of the campus buildings helping create a sense of place within the campus.
- Views from the residential and academic building along the Heritage Easement will have shorter views directly into the tree canopies filtering views into Amaroo Street.
- Views into and from the key campus opens spaces will create a sense of natural surveillance within the campus.
- Key views through campus and to campus destinations creates campus legibility.
- Significant, gateway buildings will be visible from longer distant views along Constitution Avenue.
- Main campus entries will be highly visible from the street level through the built form and landscape design at these points.
- Key destinations will be visible from pedestrian walks.
- Termination of views create opportunities for design features such as atrium or terraces.
- Views through and out of campus ensure connection to place.

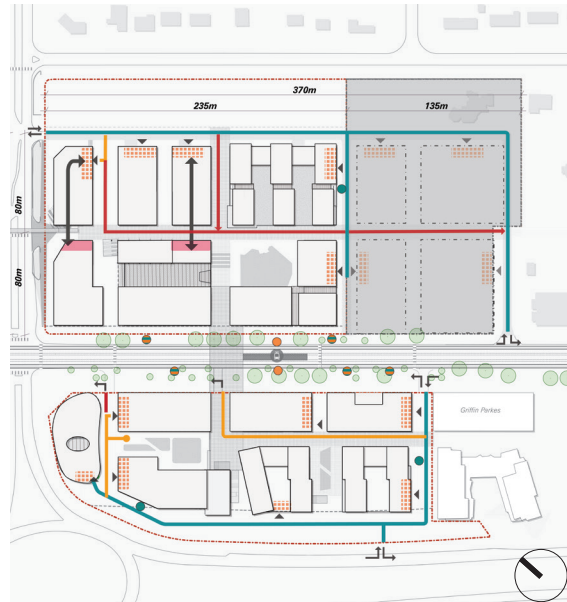


4

Strategies

Service and loading

- Vehicular movement through site on both managed and unmanaged roads.
- Full access service roads to the edges of the campus.
- Basement car park predominantly accessed from service roads.
- No access to car parking from Constitution Avenue.
- Connecting basement car parks minimises entries from Constitution Avenue.

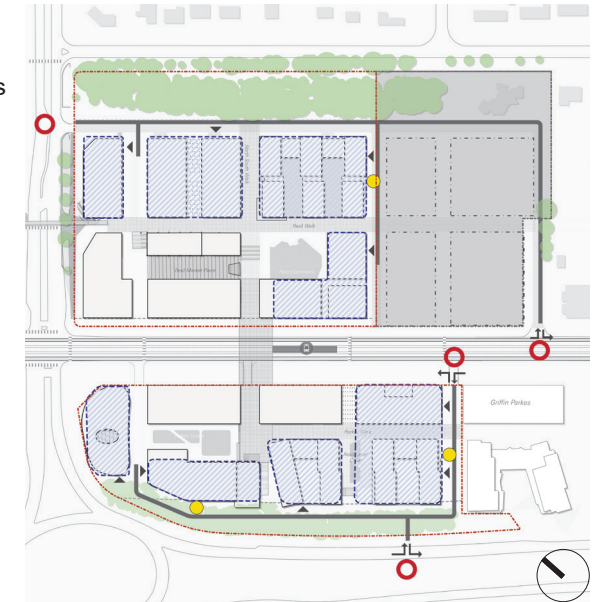


Legend

- | | |
|---|--|
| Full access service road | Waste and delivery zone |
| Emergency access only (no waste collection) | Preferred location for loading zone (currently existing car parking bays) |
| Managed access road (for waste, emergency and deliveries) | Preferred location for street level loading zone |
| Below grade access for management of waste | Preferred location for interim bus stop (relocate for construction of light rail stop) |
| Loading bay | ACT retained land |
| Ground level waste and loading area | |
| Turn in / turn out | |
| Entry / exit | |

Car parking

- The car parking delivered on the UNSW campus will meet the NCA and campus requirements at all stages of development.
- Campus levels provide flexibility for either below grade or podium car parking. Basement car parking can be connected at lower levels.



Legend

- | |
|------------------------------|
| Basement carparking location |
| Full access service road |
| Campus vehicle entry |
| Entry / exit |
| Turn in / turn out |
| Carpark entry |
| ACT retained land |

4

Strategies

Solar access

- The master plan maximises solar access to all open spaces and thoroughfares wherever possible.
- The north-south orientation of the residential and academic buildings increases solar access within the ground and podium level courtyards and gardens.
- The Reid Commons and Parkes Green will have sunlight access throughout the year.
- Campus planning ensures that both the Parkes site and Reid site have a range of spaces to suit sunlight levels and seasons.
- Drawing from the advice of a wind consultant built form will be shaped to minimise the impact of wind on public open spaces and principle pedestrian walks. Awnings, canopies and landscapes will mitigate wind speeds and enhance environmental comfort.

Equinox





Constitution Avenue - View to Reid Campus Gateway

Artists impression only



Coranderrk St - View from pedestrian bridge to Western Gateway

Artists impression only



View West to Reid Campus Core

Artists impression only

Precincts

5

5

Precincts

The UNSW Campus will be integrated learning community with five distinct yet connected precincts:

City Edge

Showcasing UNSW to Canberra City.

Reid Parkside

Creating a sensitive interface with the Heritage Easement and Reid.

Reid Campus Core

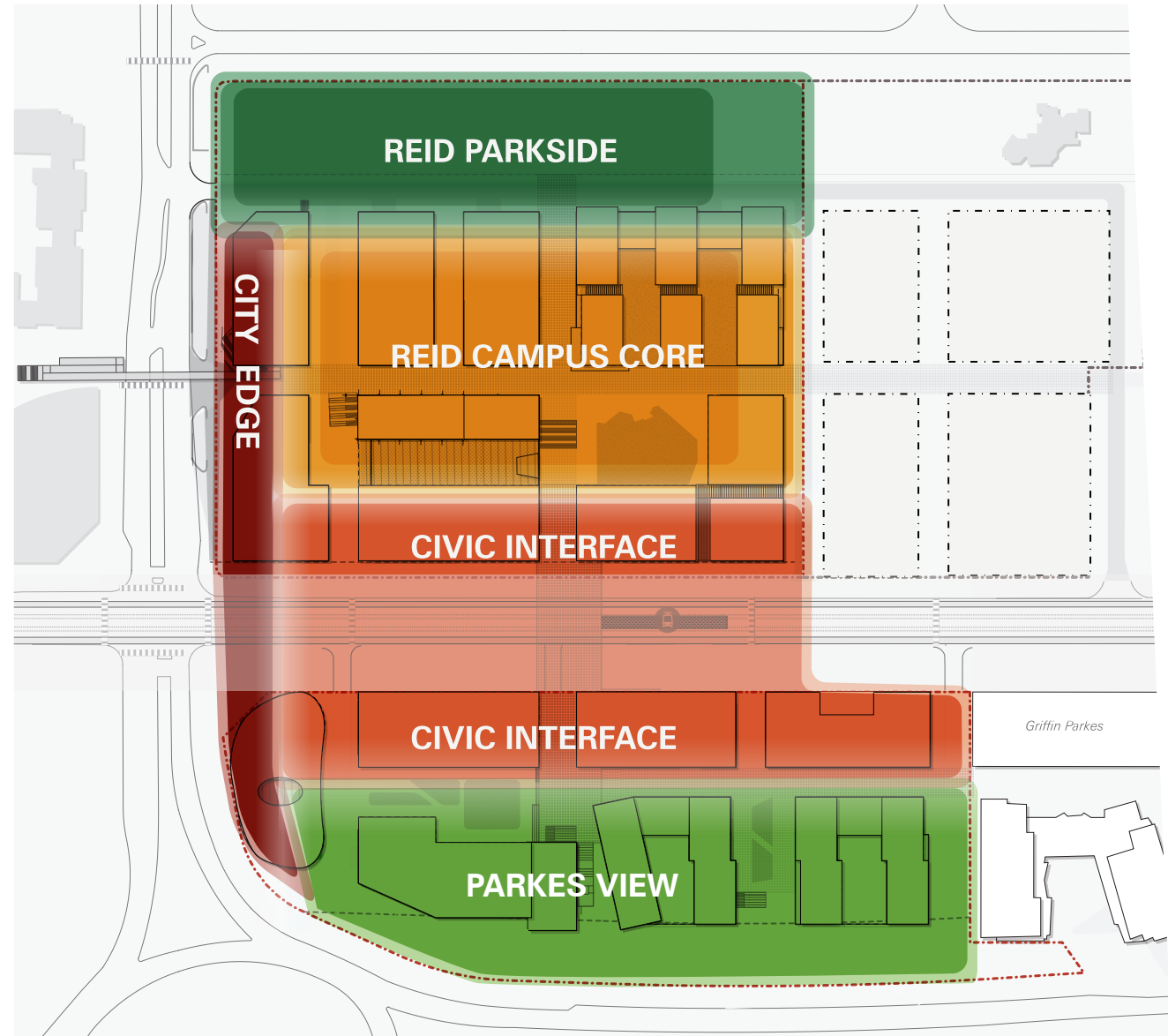
The activated and vibrant heart of the UNSW Canberra City Campus.

Civic Interface

A distinct and activated academic streetscape.

Parkes View

Connecting the campus to Canberra's Parliamentary and natural landscape views.



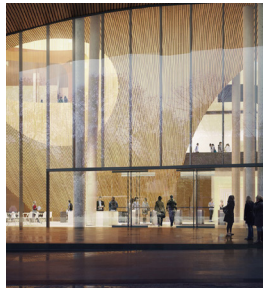
5

Precincts City Edge

- Showcasing the University to the City and celebrating the western campus gateway as a key arrival experience.
- Built form and landscape creates a distinctive interface along Coranderrk Street with shared paths and activated with entries and eateries.
- Academic buildings have high levels of transparency celebrating university partnerships.



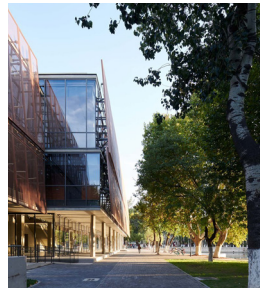
Section through Reid Walk and Coranderrk Street



SHOWCASING THE
UNIVERSITY TO THE
CITY



WESTERN CAMPUS
GATEWAY TO REID
WALK



ACTIVATING THE
CORANDERRK
INTERFACE



View east to Coranderrk St campus gateway entry from pedestrian bridge

5

Precincts Reid Parkside

- A sensitive built form and landscape interface to the Heritage Railway Easement.
- Prioritising east-west movement through the easement reflecting the natural harbour and landscape characteristics.
- Orientation of buildings minimises the streetwall, opens to views and lets sunlight in to the campus.
- Landscaped areas with gardens, informal socialising and study spaces create ‘fingers of green’ extending in to the campus.



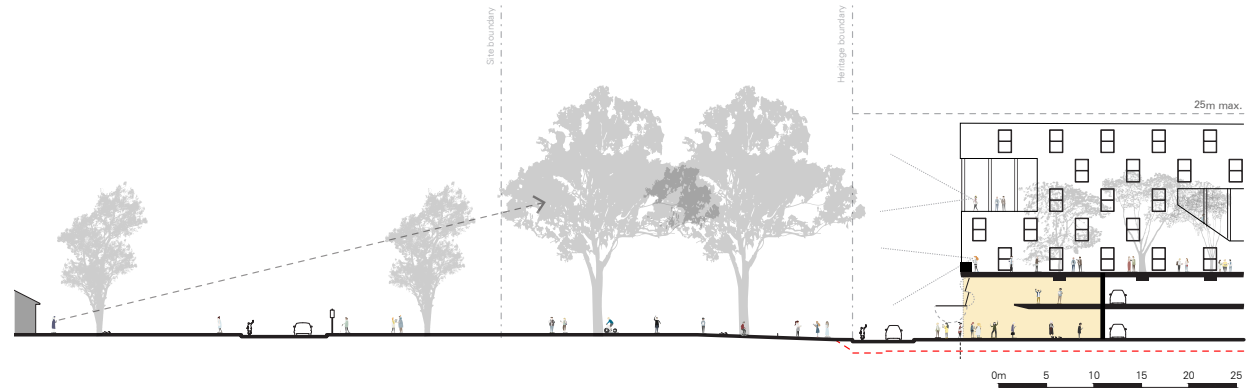
INVITING OPEN SPACES



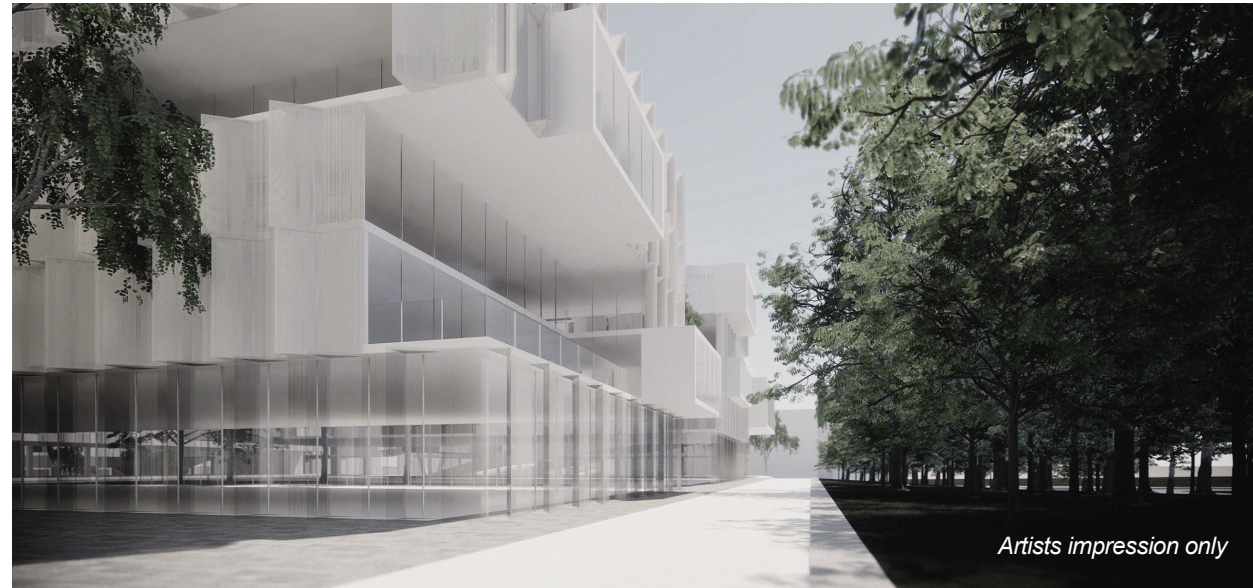
FINGERS OF GREEN
EXTENDING BETWEEN
BUILDINGS



QUIETLY ACTIVATED
FRONTAGES



Section through Heritage Easement and residential



Artists impression only

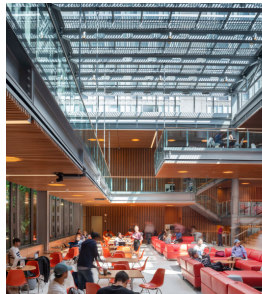
View west to academic interface along heritage easement

5

Precincts

Reid Campus Core

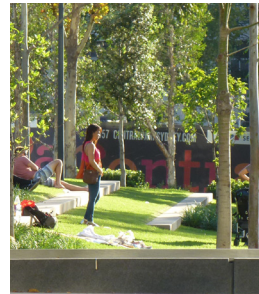
- Framing the Reid Commons is the social and cultural heart of the University.
- The intersection of the pedestrian walks provides a key point to help orient and direct movement through the campus.
- A series of human-scaled spaces, both fine-grained and larger-scaled, internal and external, provide a range of experiences and places to enjoy.
- Diverse built form will include activated ground floors and opportunities for innovative architecture including the reuse of the existing library.



FLEXIBLE AND ADAPTABLE SPACES SUPPORT CAMPUS CULTURE AND EVENTS



CREATING THE CAMPUS 'HEART' CONNECTED BY PEDESTRIAN WALKS



CAMPUS COMMONS AS A CENTRAL, WELCOMING SPACE



Section through Reid Commons



Reid Campus Core view of central green

5

Precincts Civic Interface

- Celebrating UNSW's civic presence along the nationally significant boulevard, Constitution Avenue.
- Creating a well defined street interface with high quality architecture framing gateway entrances to Parkes and Reid campuses and connected by Constitution Plaza.
- Expanding on existing landscaping, UNSW will create an activated streetscape through retail, entrances and outdoor spaces overlooking the street and future light rail corridor.



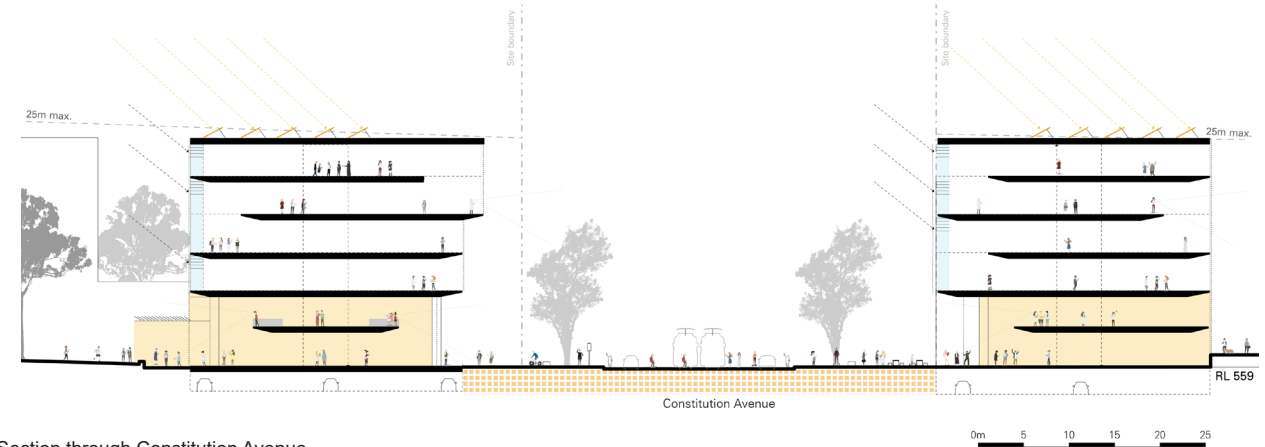
PERMEABLE
THRESHOLDS AND
LEGIBLE PLACES



CONNECTING
BOTH SIDES OF
CONSTITUTION
AVENUE



INTEGRATED STREET
AND LANDSCAPE
ELEMENTS



Section through Constitution Avenue



Street view of Reid Campus Gateway from Constitution Avenue

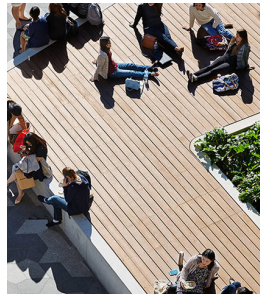
5

Precincts Parkes View

- Parkes View celebrates UNSW Canberra City campus location within the National Parliamentary Triangle.
- The open spaces and built form in create opportunities for users to visually connect to the Lake Burley Griffin and Canberra's natural landscape.
- The built form is shaped around preserving viewlines and maximising solar access into the precinct.
- The campus interface to Parkes Way is a less formal landscape including water management features such as swales.



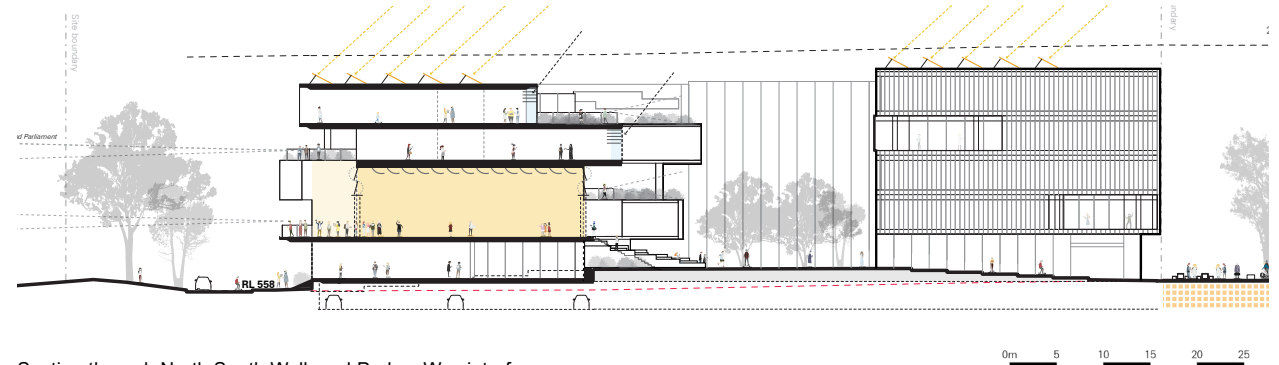
CONNECTING TO VIEW



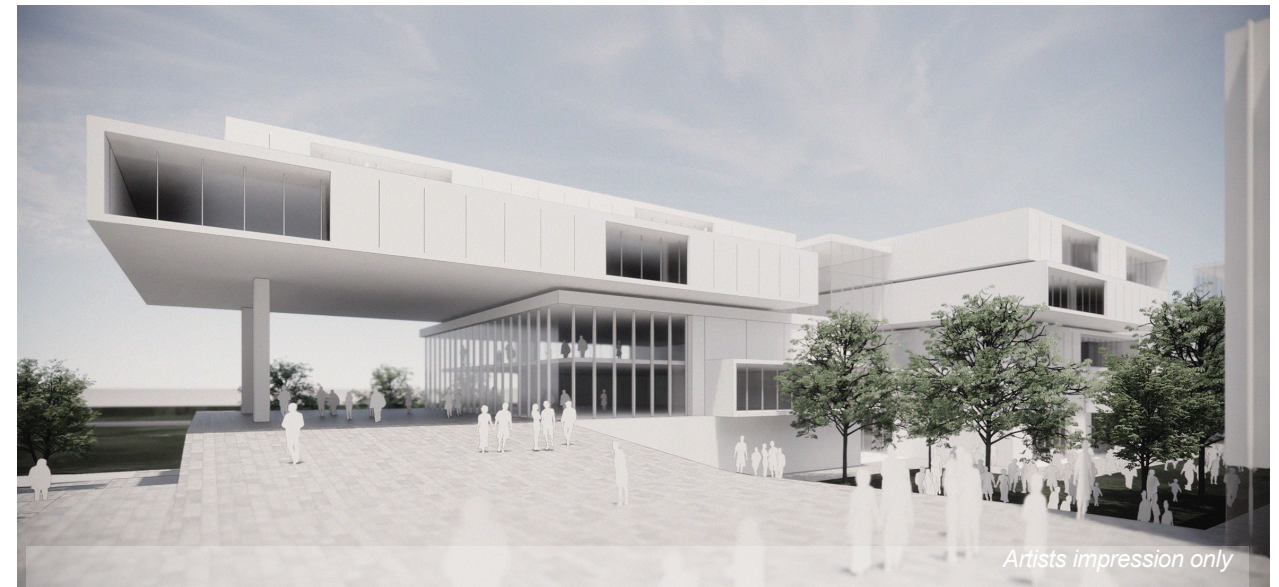
CREATE SPACES FOR
CAMPUS LIFE AND
ACTIVITY



CREATE A CENTRAL
SPINE FOR MOVEMENT
THROUGH PARKES
CAMPUS



Section through North South Walk and Parkes Way interface



View south along North South Walk to elevated belvedere

Artists impression only

Staging and Implementation

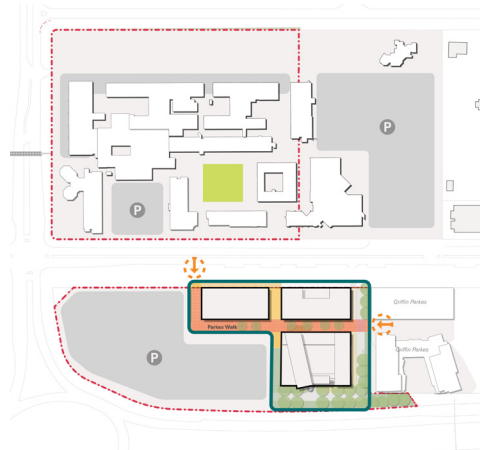
6

6

Staging and Implementation

Stage 1

- UNSW presence on Constitution Avenue
- Parkes site gateway entry west of the academic building
- Parkes Walk.



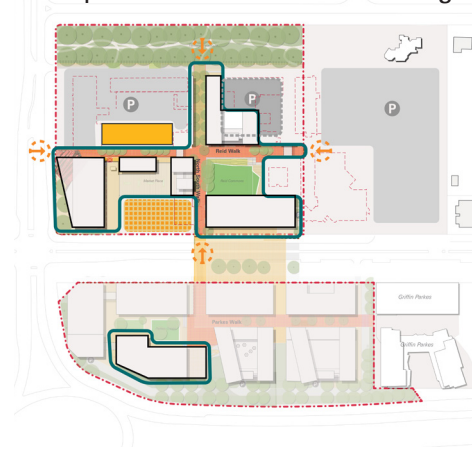
Stage 2

- Complete UNSW interface along southern edge of Constitution Avenue
- Parkes site open spaces
- Opportunity for landmark and partnership academic buildings
- Complete Parkes site residential village
- Adaptive use of Reid site buildings.



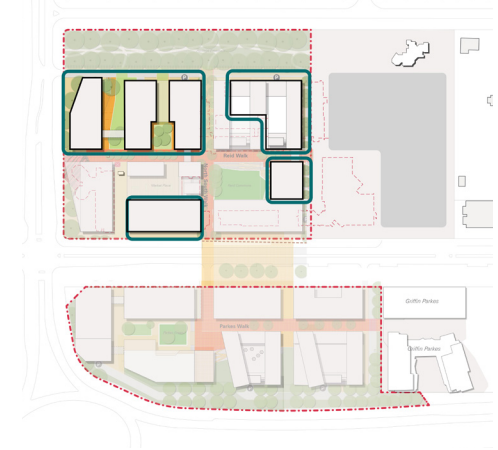
Stage 3

- Complete Parkes site
- Renewal of Reid site including Campus Commons and Marketplace
- Upgrades Coranderrk interface and gateway at existing bridge
- New public realm areas including Reid and North South walk
- Advocate for Constitution Avenue upgrade and pedestrian plaza
- Adaptive reuse of Reid site buildings.



Stage 4

- Completion of Reid site
- Completion of Reid Parkside precinct (Heritage Railway Easement interface)
- Completion of Constitution Avenue interface
- Adaptive reuse of Reid site buildings (where appropriate).



7

Next Steps

Have your say!

Help shape the next phase of the project by providing your feedback on our Draft Master Plan by 1 March 2021

Email

feedback@canberra.unsw.edu.au

Phone

0438 229 323

Online feedback form

www.canberra.unsw.edu.au/haveyoursay

Copyright UNSW Canberra
CRICOS Provider CODE 00098G